

TRANSEAGLE

TENACITY & STABILITY

Tire Direct

La nueva generación



YOUR PREMIER TRAILER TIRE

At Transeagle Tires, we understand that customers seek value, fair pricing, reliability, and safety. That's why Transeagle is committed to providing all our customers with informative point-of-sale materials, eye-catching signage, and exceptional customer service.

Our mission at Transeagle Tires is to be your comprehensive trailer tire line supplier, offering the products and programs you require, along with the service and support you rightfully deserve.

Explore our range of tires, including ST Radial, ST Radial II, and Transhailer HD. Trust Transeagle Tires for a combination of tenacity and stability. We offer a wide range of sizes, including 17.5, 19.5, and 22.5 inches ensuring your trailer, ATV, or Lawn & Garden tires meet the highest standards of quality and performance.



www.tiredirect.com.mx



ST RADIAL II

The ST Radial II incorporates a nylon overlay across all sizes, providing exceptional strength and durability. The enhanced shoulder design promotes longer wear and improved heat dissipation. The combination of polyester construction with steel belts allows for an optimized tread compound and a deep tread depth, ultimately resulting in improved wear and extended mileage.

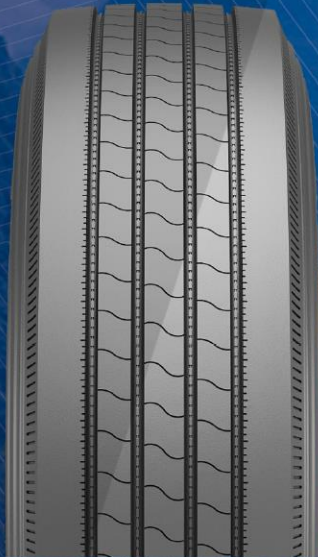
Part Number	Size	Load Range	L.S.	OD INCH	SW INCH	Measuring Rim Width	Approved Rim Width	Single tire Max load	Dual tire Max load	Max PSI	Sidewall
TSL18	ST145R12	E	88/83L	20.94	5.57	4	3.5-5.0	1230	1070	80	BLK
TSL01N	ST175/80R13	C	91/87N	24.02	6.97	5	4.5-6.0	1360	1200	50	BLK
TSL02N	ST175/80R13	D	97/93N	24.02	6.97	5	4.5-6.0	1610	1430	65	BLK
TSL02RN	ST175/80R13	D	97/93N	24.02	6.97	5	4.5-6.0	1610	1430	65	RWL
TSL14	ST175/80R13	E	101/97N	24.02	6.97	5	4.5-6.0	1820	1610	80	BLK
TSL17	ST185/80R13	D	99/95N	24.65	7.24	5	4.5-6.0	1710	1520	65	BLK
TSL03N	ST205/75R14	C	100/96N	26.14	7.99	5.5	5.0-7.0	1760	1570	50	BLK
TSL04N	ST205/75R14	D	105/101N	26.14	7.99	5.5	5.0-7.0	2040	1820	65	BLK
TSL04RN	ST205/75R14	D	105/101N	26.14	7.99	5.5	5.0-7.0	2040	1820	65	RWL
TSL15	ST205/75R14	E	109/104N	26.14	7.99	5.5	5.0-7.0	2270	1985	80	BLK
TSL07N	ST205/75R15	C	101/97N	27.13	7.99	5.5	5.0-7.0	1820	1610	50	BLK
TSL08N	ST205/75R15	D	107/102N	27.13	7.99	5.5	5.0-7.0	2150	1870	65	BLK
TSL08AN	ST205/75R15	E	111/106N	27.13	7.99	5.5	5.0-7.0	2400	2090	80	BLK
TSL08RN	ST205/75R15	D	107/102N	27.13	7.99	5.5	5.0-7.0	2150	1870	65	RWL
TSL19	ST215/65R17	C	102/98N	28.03	8.70	6.5	6.5-8.0	1870	1650	50	BLK
TSL16	ST215/65R17	D	107/103N	28.03	8.70	6.5	6.5-8.0	2150	1930	65	BLK
TSL05N	ST215/75R14	C	102/98N	26.69	8.5	6	5.5-7.0	1870	1650	50	BLK
TSL06N	ST215/75R14	D	108/103N	26.69	8.5	6	5.5-7.0	2200	1930	65	BLK
TSL09N	ST225/75R15	D	113/108N	28.31	8.78	6	6.0-7.5	2540	2200	65	BLK
TSL10N	ST225/75R15	E	117/112N	28.31	8.78	6	6.0-7.5	2830	2470	80	BLK
TSLIORN	ST225/75R15	E	117/112N	28.31	8.78	6	6.0-7.5	2830	2470	80	RWL
TSL11N	ST235/80R16	E	124/120N	30.79	9.25	6.5	6.0-8.0	3520	3080	80	BLK
TSL11AN	ST235/80R16	F	126/122N	30.79	9.25	6.5	6.0-8.0	3750	3305	95	BLK
TSL11ARN	ST235/80R16	F	126/122N	30.79	9.25	6.5	6.0-8.0	3750	3305	95	RWL
TSL13N	ST235/85R16	E	125/121N	31.73	9.25	6.5	6.0-7.5	3640	3200	80	BLK
TSL12N	ST235/85R16	F	128/124N	31.73	9.25	6.5	6.0-7.5	3960	3520	95	BLK



ST RADIAL

SEMI-STEEL ST

The ST Radial boasts all-steel construction in both the sidewall and tread area, making it exceptionally durable for handling heavy loads. This tire features multi-sipes that not only enhance traction in wet conditions, but also effectively dissipate heat for extended tread life.



Part Number	Size	Load Range	L.S.	OD INCH	SW INCH	Measuring Rim Width	Approved Rim Width	Single tire Max load	Dual tire Max load	Max PSI	Sidewall
TA18	ST205/90R15	E	118/113N	29.53	7.99	5.5	5.0-6.5	2910	2540	80	BLK
TA19	ST205/90R15	F	122/117N	29.53	7.99	5.5	5.0-6.5	3300	2830	95	BLK
TA24	ST225/90R16	G	128/124N	31.93	8.78	6	6.0-7.0	3960	3520	110	BLK

ALL STEEL STR

Wide grooves further contribute by reducing the risk of hydroplaning and minimizing rolling resistance.

Part Number	Size	Load Range	L.S.	OD INCH	SW INCH	Measuring Rim Width	Approved Rim Width	Single tire Max load	Dual tire Max load	Max PSI	Sidewall
TA27	ST205/75R15	G	115/110N	27.13	7.99	5.5	5.0-7.0	2680	2335	95	BLK
TA17	ST225/75R15	F	121/117M	28.31	8.78	6	6.0-7.5	3195	2835	95	BLK
TA17B	ST225/75R15	G	123/119L	28.31	8.78	6	6.0-7.5	3420	3000	110	BLK
TA16A	ST225/90R16	H	130/126L	31.93	8.65	6	6.0-7.0	4190	3750	115	BLK
TA15	ST235/80R16	G	129/125M	30.79	9.25	6.5	6.0-8.0	4080	3640	110	BLK
TA15A	ST235/80R16	H	130/126L	30.79	9.25	6.5	6.0-8.0	4190	3750	115	BLK
TA14	ST235/85R16	G	132/127M	31.73	9.25	6.5	6.0-7.5	4400	3860	110	BLK
TA14A	ST235/85R16	H	133/128L	31.73	9.25	6.5	6.0-7.5	4540	3970	120	BLK

TRANSHAULER HD

The Transhailer HD utilizes all-steel construction throughout the sidewall and tread for superior durability under heavy loads. This tire also features multi-sipes that enhance wet weather traction while effectively dissipating heat to extend tread life. Wide grooves are incorporated to minimize the risk of hydroplaning and reduce rolling resistance.

Part Number	Size	Load Range	L.S.	OD INCH	SW INCH	Measuring Rim Width	Approved Rim Width	Single tire Max load	Dual tire Max load	Max PSI	Sidewall
TA20	215/75R17.5	H	135/133L	30.20	8.31	6	6.00,6.75	4805	4540	123	BLK
TA22	225/70R19.5	G	128/126M	31.93	8.9	6.75	6.00,6.75	3970	3750	110	BLK
TA21	235/75R17.5	J	143/141J	31.37	9.17	6.75	6.75,7.50	6005	5675	127	BLK
TA23	245/70R19.5	H	135/133M	33.03	9.76	7.5	6.75,7.50	4805	4540	120	BLK
TA25	255/70R22.5	H	140/137M	36.61	10.04	7.5	6.75,7.50,8.25	5510	5070	120	BLK

