

KAPSEN



Tire Direct
La nueva generación



SORT	RFT / UHP	UHP	H/P
PATTERN	K3000 	S2000 	RS26 
PERFORMANCE	    Braking Drainage Handling Fuel-saving	    Braking Drainage Handling Fuel-saving	    Drainage Handling Comfort Safety

SORT	TOURING	H/P-A/S	H/P-A/S
PATTERN	H201 	H202 	K717 
PERFORMANCE	    Wear Safety Handling Braking	    Comfort Fuel-saving Silence Safety	    Braking Drainage Handling Safety

SORT	H/P	H/P	H/P
PATTERN	HD918 	K737 	S801 
PERFORMANCE	    Comfort Fuel-saving Silence Safety	    Drainage Handling Silence Safety	    Drainage Handling Silence Safety

SORT	A/T	M/T	VAN/LTR/TAXI
PATTERN	RS23 	RS25 	RS01 
PERFORMANCE	    Drainage Braking Off-road Safety	    Drainage Braking Off-road Safety	    Wear Safety Handling Braking

SORT	S/T	VAN/LTR	H/T
PATTERN	RS03 	RS07 	RS27 
PERFORMANCE	    Drainage Handling Silence Safety	    Comfort Fuel-saving Silence Safety	    Comfort Fuel-saving Silence Safety

SORT	UHP AS	Drifting	4 SEASON
PATTERN	H2000 	S3000 	A4 
PERFORMANCE	    Comfort Fuel-saving Silence Safety	    Braking Drainage Handling Safety	    Comfort Fuel-saving Silence Safety

KAPSEN

KAPSEN TIRE · TAKE YOU TO THE GREEN WORLD



Tire Direct
La nueva generación







K3000

UTQG:300 AA A

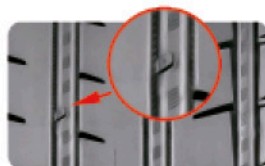
The K3000 is a high-performance sport and safety tyre (UHP), specially developed for medium and high-class passenger cars. It maintains the support and control of the tyre to ensure your driving safety under the condition of air shortage.



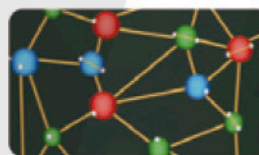
Adopt Imported Rayon as skeleton material, high flexure strength and excellent stability.



multi-pitch design, improve drainage performance and wetland grip, effectively reduce noise during driving.



Silencer design, disrupt the pattern groove high-speed airflow, reduce the noise caused by the pumping effect, to provide you with a more quiet space.



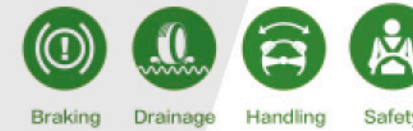
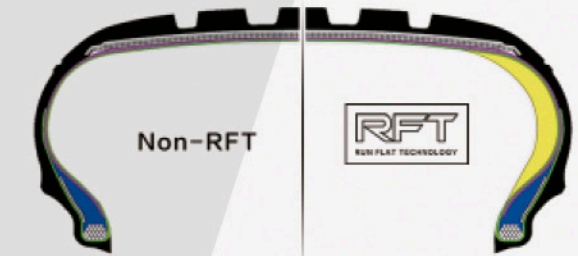
Low heat generation support rubber formula, the tyre after the support to continue driving.



Asymmetric pattern, outside reinforcement design, effectively inhibit the vehicle turning or braking deformation, turning to provide more powerful support, excellent dry handling performance and braking performance.

Born for safe driving, better performance

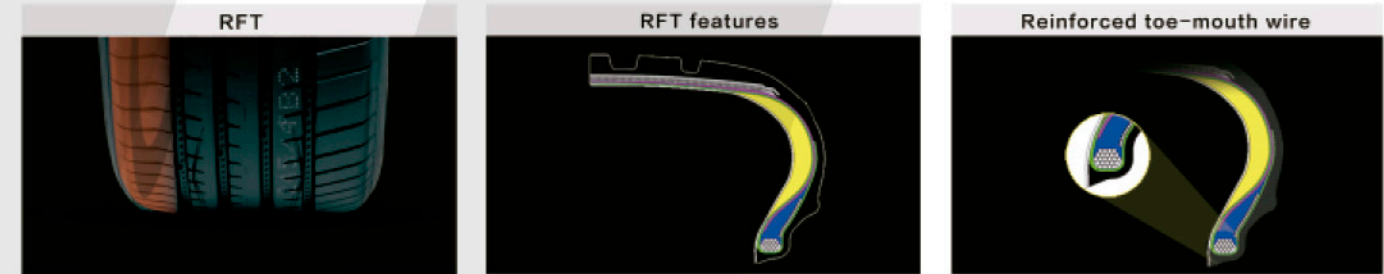
The RFT technology used by the Roadboss brand, under certain circumstances, can effectively prevent the vehicle from running out of control due to puncture. Not only that, it strengthens the sidewall support and makes the tyre perform well.



Performance visualization

- dry -----
- wet -----
- athletic -----
- comfortable -----
- mute -----

Run Flat Technology (RFT)



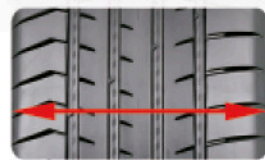
Size	LI&SS	/XL	Standard Rim	Max. Load	Max. Pressure	Overall Diameter	Section Width	UTQG		
			inch	kg	kPa	mm	mm			
195 / 55 RF 16 91V XL	6.0	615	340	620	201	300	AA	A		
205 / 45 ZRF 17 88W XL	6.5	670	340	632	214	300	AA	A		
205 / 50 ZRF 17 93W XL	7.0	560	340	616	206	300	AA	A		
225 / 45 ZRF 17 94W XL	6.5	650	340	638	214	300	AA	A		
225 / 50 ZRF 17 98W XL	7.5	670	340	634	225	300	AA	A		
225 / 55 ZRF 17 101W XL	7.0	750	340	658	233	300	AA	A		
225 / 40 ZRF 18 92W XL	7.0	825	340	680	233	300	AA	A		
225 / 45 ZRF 18 95W XL	8.0	630	340	637	230	300	AA	A		
225 / 50 ZRF 18 99W XL	7.5	690	340	659	225	300	AA	A		
245 / 40 ZRF 18 97W XL	7.0	775	340	683	233	300	AA	A		
245 / 45 ZRF 18 100W XL	8.5	730	340	653	248	300	AA	A		
245 / 50 ZRF 18 104W XL	8.0	800	340	677	243	300	AA	A		
255 / 35 ZRF 18 94Y XL	7.5	900	340	703	253	300	AA	A		
255 / 40 ZRF 18 99Y XL	9.0	670	340	635	260	300	AA	A		
255 / 55 ZRF 18 109W XL	9.0	775	340	661	260	300	AA	A		
275 / 40 ZRF 18 103W XL	8.0	1030	340	737	265	300	AA	A		
225 / 45 ZRF 19 93W XL	9.5	925	340	703	278	300	AA	A		
235 / 45 ZRF 19 99Y XL	8.0	650	340	695	236	300	AA	A		
235 / 50 ZRF 19 103W XL	8.0	775	340	719	245	300	AA	A		
235 / 55 ZRF 19 105W XL	7.5	875	340	741	245	300	AA	A		
245 / 35 ZRF 19 93W XL	8.5	800	340	677	243	300	AA	A		
245 / 40 ZRF 19 98Y XL	8.5	750	340	679	248	300	AA	A		
245 / 45 ZRF 19 102Y XL	8.0	850	340	703	243	300	AA	A		
245 / 50 ZRF 19 105W XL	7.5	925	340	729	253	300	AA	A		
255 / 35 ZRF 19 96W XL	9.0	710	340	661	260	300	AA	A		
255 / 45 ZRF 19 104W XL	8.5	900	340	713	255	300	AA	A		
255 / 50 ZRF 19 107W XL	8.0	975	340	739	265	300	AA	A		
275 / 35 ZRF 19 100Y XL	9.5	800	340	675	278	300	AA	A		
275 / 40 ZRF 19 105W XL	9.5	925	340	703	278	300	AA	A		
245 / 40 ZRF 20 99Y XL	8.5	775	340	704	248	300	AA	A		
245 / 45 ZRF 20 103Y XL	8.0	875	340	728	243	300	AA	A		
275 / 40 ZRF 20 106W XL	9.5	950	340	728	278	300	AA	A		
315 / 35 ZRF 20 110Y XL	11	1060	340	728	320	300	AA	A		
275 / 40 ZRF 21 107Y XL	9.5	975	340	753	278	300	AA	A		
315 / 35 ZRF 21 111Y XL	11.0	1090	340	753	320	300	AA	A		



K3000

UTQG:300 AA A

K3000 is a sport and comfortable high performance tyre specially developed for medium and high class cars. Strong Grip and control give you an accurate driving experience. Lower Noise, lower rolling resistance, enjoy the comfortable life of people and cars.

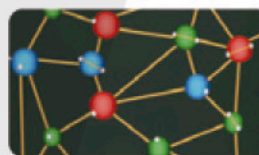


Increase the ground ratio of the tyre, optimize the profile and structure of the tyre, make the ground ratio of the tyre bigger, provide more powerful grip.



Silencer design, disrupt the pattern groove high-speed airflow, reduce the noise caused by the pumping effect, to provide you with a more quiet space.

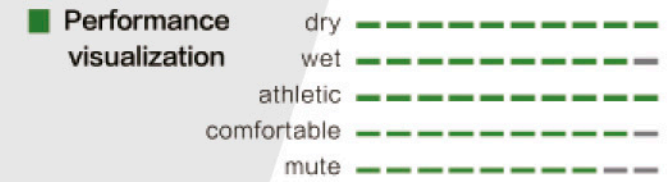
multi-pitch design, improve drainage performance and wetland grip, effectively reduce noise during driving.



Low heat generation support rubber formula, the tyre after the support to continue driving.



Asymmetric pattern, outside reinforcement design, effectively inhibit the vehicle turning or braking deformation, turning to provide more powerful support, excellent dry handling performance and braking performance.



Size	LI&SS	/XL	Standard Rim	Max. Load	Max. Pressure	Overall Diameter	Section Width	UTQG		
								inch	kg	kPa
195 / 45 R 16	84V	XL	6.5	500	340	582	195	300	AA	A
195 / 50 R 16	88V	XL	6.0	560	340	602	201	300	AA	A
195 / 55 R 16	91V	XL	6.0	615	340	620	201	300	AA	A
205 / 45 ZR 16	87W	XL	7.0	545	340	590	206	300	AA	A
215 / 45 ZR 16	90W	XL	7.0	600	340	600	213	300	AA	A
205 / 50 ZR 16	91W	XL	6.5	615	340	612	214	300	AA	A
205 / 55 ZR 16	94W	XL	6.5	670	340	632	214	300	AA	A
215 / 55 ZR 16	97W	XL	7.0	730	340	642	226	300	AA	A
225 / 55 ZR 16	99W	XL	7.0	775	340	654	233	300	AA	A
195 / 45 ZR 17	85W	XL	6.5	515	340	608	195	300	AA	A
205 / 40 ZR 17	84W	XL	7.5	500	340	596	212	300	AA	A
205 / 45 ZR 17	88W	XL	7.0	560	340	616	206	300	AA	A
205 / 50 ZR 17	93W	XL	6.5	650	340	638	214	300	AA	A
205 / 55 ZR 17	95W	XL	6.5	690	340	658	214	300	AA	A
215 / 45 ZR 17	91W	XL	7.0	615	340	626	213	300	AA	A
215 / 50 ZR 17	95W	XL	7.0	690	340	648	226	300	AA	A
215 / 55 ZR 17	98W	XL	7.0	750	340	668	226	300	AA	A
225 / 45 ZR 17	94W	XL	7.5	670	340	634	225	300	AA	A
225 / 50 ZR 17	98W	XL	7.0	750	340	658	233	300	AA	A
225 / 55 ZR 17	101W	XL	7.0	825	340	680	233	300	AA	A
235 / 45 ZR 17	97W	XL	8.0	730	340	644	236	300	AA	A
235 / 50 ZR 17	100W	XL	7.5	800	340	668	245	300	AA	A
235 / 55 ZR 17	103W	XL	7.5	875	340	690	245	300	AA	A
245 / 40 ZR 17	95W	XL	8.5	690	340	628	248	300	AA	A
245 / 45 ZR 17	99W	XL	8.0	775	340	652	243	300	AA	A
255 / 45 ZR 17	102Y	XL	8.5	850	340	662	255	300	AA	A
215 / 40 ZR 18	89W	XL	7.5	580	340	629	218	300	AA	A
215 / 45 ZR 18	93W	XL	7.0	650	340	651	213	300	AA	A
225 / 40 ZR 18	92W	XL	8.0	630	340	637	230	300	AA	A
225 / 45 ZR 18	95W	XL	7.5	690	340	659	225	300	AA	A
225 / 50 ZR 18	99W	XL	7.0	775	340	683	233	300	AA	A
225 / 55 ZR 18	102W	XL	7.0	850	340	705	233	300	AA	A
235 / 40 ZR 18	95W	XL	8.5	690	340	645	241	300	AA	A
235 / 45 ZR 18	98W	XL	8.0	750	340	669	236	300	AA	A
235 / 50 ZR 18	101W	XL	7.5	825	340	693	245	300	AA	A
245 / 40 ZR 18	97W	XL	8.5	730	340	653	248	300	AA	A
245 / 45 ZR 18	100W	XL	8.0	800	340	677	243	300	AA	A
245 / 50 ZR 18	104W	XL	7.5	900	340	703	253	300	AA	A
255 / 40 ZR 18	99Y	XL	9.0	775	340	661	260	300	AA	A
255 / 45 ZR 18	103W	XL	8.5	875	340	687	255	300	AA	A
255 / 35 ZR 18	94Y	XL	9.0	670	340	635	260	300	AA	A
255 / 55 ZR 18	109W	XL	8.0	1030	340	737	265	300	AA	A
265 / 35 ZR 18	97Y	XL	9.5	730	340	643	271	300	AA	A
275 / 35 ZR 18	99W	XL	9.5	775	340	649	278	300	AA	A
275 / 40 ZR 18	103W	XL	9.5	875	340	677	278	300	AA	A
285 / 35 ZR 18	101W	XL	10	825	340	657	290	300	AA	A
225 / 40 ZR 19	93W	XL	8.0	650	340	663	230	300	AA	A
225 / 55 ZR 19	99V		7.0	775	300	731	233	300	AA	A
235 / 35 ZR 19	91W	XL	8.5	615	340	647	241	300	AA	A
235 / 40 ZR 19	96W	XL	8.5	710	340	671	241	300	AA	A
235 / 45 ZR 19	99Y	XL	8.0	775	340	695	236	300	AA	A
235 / 50 ZR 19	103W	XL	7.5	875	340	719	245	300	AA	A
235 / 55 ZR 19	105W	XL	7.5	925	340	741	245	300	AA	A
245 / 35 ZR 19	93W	XL	8.5	650	340	655	248	300	AA	A
245 / 40 ZR 19	98Y	XL	8.5	750	340	679	248	300	AA	A
245 / 45 ZR 19	102Y	XL	8.0	850	340	703	243	300	AA	A
245 / 50 ZR 19	105W	XL	7.5	925	340	729	253	300	AA	A
255 / 35 ZR 19	96W	XL	9.0	710	340	661	260	300	AA	A
255 / 45 ZR 19	104W	XL	8.5	900	340	713	255	300	AA	A
255 / 50 ZR 19	107W	XL	8.0	975	340	739	265	300	AA	A
275 / 35 ZR 19	100Y	XL	9.5	800	340	675	278	300	AA	A
275 / 40 ZR 19	105W	XL	9.5	925	340	703	278	300	AA	A
225 / 30 ZR 20	85W	XL	8.0	515	340	644	230	300	AA	A
245 / 40 ZR 20	99Y	XL	8.5	775	340	704	248	300	AA	A
245 / 45 ZR 20	103Y	XL	8.0	875	340	728	243	300	AA	A
275 / 40 ZR 20	106W	XL	9.5	950	340	728	278	300	AA	A
295 / 45 ZR 20	114W	XL	10.0	1180	340	774	296	300	AA	A
315 / 35 ZR 20	110Y	XL	11.0	1060	340	728	320	300	AA	A
275 / 40 ZR 21	107Y	XL	9.5	975	340	753	278	300	AA	A
315 / 35 ZR 21	111Y	XL	11.0	1090	340	753	320	300	AA	A
245 / 30 ZR 22	92W	XL	8.5	630	340	707	248	300	AA	A



S2000

UTQG:280 AA A

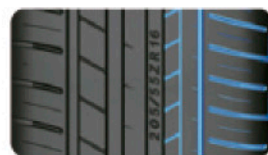
S2000 seeks exercise limit and extreme experience. The excellen high speed ability,handling in both dry and wet conditions,security and green design,make it to be preferred choice for luxury cars,Her stable performance is worthy of your trust.



Special asymmetrical design provides excellent grip and handling in both dry wet conditions.



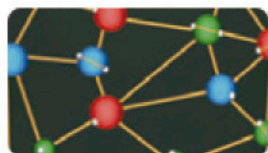
The updated SSBP and silica compound provide excellent wet grip,much reduced rolling resistance,and terrific handling in high speed.



Sipes on outside shoulder enhance turning handling and low down noise in high speed.

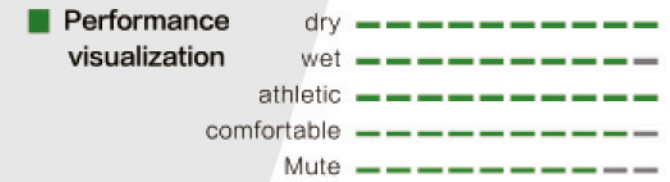
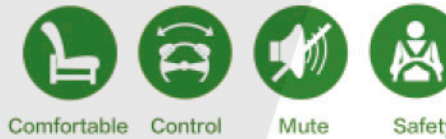


The dramatic2 central big grooves with special compound,enhances efficient water evacuation to deal with all conditions



The high content white carbon black and solution polymerized SBR were used in tread formulation to reduce rolling resistance and improve the performance of wetland.

Tire Direct
La nueva generación



Size			LI&SS	/XL	Standard Rim	Max. Load	Max. Pressure	Overall Diameter	Section Width	UTQG				
					inch	kg	kPa	mm	mm					
195	/	45	R	16	84V	XL	6.5	500	340	582	195	280	AA	A
195	/	50	R	16	88V	XL	6.0	560	340	602	201	280	AA	A
195	/	55	R	16	91V	XL	6.0	615	340	620	201	280	AA	A
205	/	45	ZR	16	87W	XL	7.0	545	340	590	206	280	AA	A
205	/	50	ZR	16	91W	XL	6.5	615	340	612	214	280	AA	A
205	/	55	ZR	16	91W		6.5	615	300	632	214	280	AA	A
205	/	55	ZR	16	94W	XL	6.5	670	340	632	214	280	AA	A
215	/	45	ZR	16	90W	XL	7.0	600	340	600	213	280	AA	A
215	/	55	ZR	16	97W	XL	7.0	730	340	642	226	280	AA	A
225	/	50	ZR	16	96W	XL	7.0	710	340	632	233	280	AA	A
225	/	55	ZR	16	99W	XL	7.0	775	340	654	233	280	AA	A
205	/	40	ZR	17	84W	XL	7.5	500	340	596	212	280	AA	A
205	/	45	ZR	17	88W	XL	7.0	560	340	616	206	280	AA	A
205	/	50	ZR	17	93Y	XL	6.5	650	340	638	214	280	AA	A
215	/	40	ZR	17	87W	XL	7.5	545	340	604	218	280	AA	A
215	/	45	ZR	17	91W	XL	7.0	615	340	626	213	280	AA	A
215	/	50	ZR	17	95W	XL	7.0	690	340	648	226	280	AA	A
215	/	55	ZR	17	98W	XL	7.0	750	340	668	226	280	AA	A
225	/	45	ZR	17	94W	XL	7.5	670	340	634	225	280	AA	A
225	/	50	ZR	17	98W	XL	7.0	750	340	658	233	280	AA	A
225	/	55	ZR	17	101W	XL	7.0	825	340	680	233	280	AA	A
235	/	45	ZR	17	97W	XL	8.0	730	340	644	236	280	AA	A
235	/	50	ZR	17	100W	XL	7.5	800	340	668	245	280	AA	A
235	/	55	ZR	17	103W	XL	7.5	875	340	690	245	280	AA	A
245	/	40	ZR	17	95W	XL	8.5	690	340	628	248	280	AA	A
245	/	45	ZR	17	99W	XL	8.0	775	340	652	243	280	AA	A
255	/	45	ZR	17	102Y	XL	8.5	850	340	662	255	280	AA	A
215	/	35	ZR	18	84Y	XL	7.5	500	340	607	218	280	AA	A
215	/	40	ZR	18	89Y	XL	7.5	580	340	629	218	280	AA	A
215	/	45	ZR	18	93W	XL	7.0	650	340	651	213	280	AA	A
225	/	40	ZR	18	92W	XL	8.0	630	340	637	230	280	AA	A
225	/	45	ZR	18	95W	XL	7.5	690	340	659	225	280	AA	A
235	/	40	ZR	18	95W	XL	8.5	690	340	645	241	280	AA	A
235	/	45	ZR	18	98W	XL	8.0	750	340	669	236	280	AA	A
235	/	50	ZR	18	101W	XL	7.5	825	340	693	245	280	AA	A
245	/	40	ZR	18	97W	XL	8.5	730	340	653	248	280	AA	A
245	/	45	ZR	18	100W	XL	8.0	800	340	677	243	280	AA	A
255	/	35	ZR	18	94Y	XL	9.0	670	340	635	260	280	AA	A
255	/	40	ZR	18	99Y	XL	9.0	775	340	661	260	280	AA	A
255	/	45	ZR	18	103W	XL	8.5	875	340	687	255	280	AA	A
265	/	35	ZR	18	97Y	XL	9.5	730	340	643	271	280	AA	A
225	/	35	ZR	19	88Y	XL	8.0	560	340	641	230	280	AA	A
225	/	40	ZR	19	93W	XL	8.0	650	340	663	230	280	AA	A
235	/	35	ZR	19	91W	XL	8.5	615	340	647	241	280	AA	A
235	/	45	ZR	19	99Y	XL	8.0	775	340	695	236	280	AA	A
245	/	35	ZR	19	93W	XL	8.5	650	340	655	248	280	AA	A
245	/	40	ZR	19	98Y	XL	8.5	750	340	679	248	280	AA	A
245	/	45	ZR	19	102Y	XL	8.0	850	340	703	243	280	AA	A
255	/	35	ZR	19	96Y	XL	9.0	710	340	661	260	280	AA	A
265	/	30	ZR	19	93W	XL	9.5	650	340	643	271	280	AA	A
275	/	30	ZR	19	96W	XL	9.5	710	340	649	278	280	AA	A
225	/	35	ZR	20	90W	XL	8.0	600	340	666	230	280	AA	A
235	/	35	ZR	20	92W	XL	8.5	630	340	672	241	280	AA	A
245	/	35	ZR	20	95W	XL	8.5	690	340	680	248	280	AA	A
245	/	40	ZR	20	99Y	XL	8.5	775	340	704	248	280	AA	A
245	/	45	ZR	20	103Y	XL	8.0	875	340	728	243	280	AA	A
255	/	35	ZR	20	97W	XL	9.0	730	340	686	260	280	AA	A
275	/	30	ZR	21	98W	XL	9.5	750	340	699	278	280	AA	A
275	/	35	ZR	21	103W	XL	9.5	875	340	725	278	280	AA	A
285	/	30	ZR	21	100W	XL	10.0	800	340	705	290	280	AA	A



RS26

UTQG:300 AA A

RS26 is a top-end luxury tire specially developed for SUVs, which enables your car to have sports car-like handling, high stability and luxury car-like comfort under a variety of road conditions.



Adopting the gradual groove depth design, the pattern block is strong; the stability of the shoulder can optimize the dry grip of the tire.



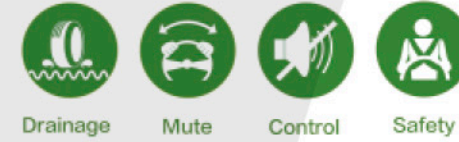
Semi-closed groove design on both sides of the tread, lower noise.



The asymmetrical pattern design makes the tires have superior grip and braking performance, and better handling.



The wide pattern groove design improves drainage performance and effectively avoids tire slippage on wet roads.



■ Performance visualization



Size	LI&SS	/XL	Standard Rim	Max. Load	Max. Pressure	Overall Diameter	Section Width	UTQG		
			inch	kg	kPa	mm	mm			
235 / 55 ZR 17	103W	XL	7.5	875	340	690	245	300	AA	A
235 / 65 R 17	108V	XL	7.0	1000	340	738	240	300	AA	A
215 / 55 R 18	99W	XL	7.0	775	340	693	226	300	AA	A
225 / 55 ZR 18	102W	XL	7.0	850	340	705	233	300	AA	A
235 / 50 ZR 18	101W	XL	7.5	825	340	693	245	300	AA	A
235 / 55 ZR 18	104W	XL	7.5	900	340	715	245	300	AA	A
235 / 65 R 18	106H		7.0	950	300	763	240	300	AA	A
255 / 55 R 18	109W	XL	8.0	1030	340	737	265	300	AA	A
255 / 60 R 18	112V	XL	7.5	1120	340	763	260	300	AA	A
225 / 45 R 19	96W	XL	7.5	710	340	685	225	300	AA	A
225 / 55 ZR 19	99W		7.0	775	300	731	233	300	AA	A
235 / 35 ZR 19	91W	XL	8.5	615	340	647	241	300	AA	A
235 / 50 ZR 19	103W	XL	7.5	875	340	719	245	300	AA	A
235 / 55 ZR 19	105W	XL	7.5	925	340	741	245	300	AA	A
235 / 60 R 19	107V	XL	7.0	975	340	765	240	300	AA	A
235 / 65 R 19	109V	XL	7.0	1030	340	789	240	300	AA	A
245 / 35 ZR 19	93W	XL	8.5	650	340	655	248	300	AA	A
245 / 55 ZR 19	103W		7.5	875	300	753	253	300	AA	A
255 / 40 ZR 19	100W	XL	9.0	800	340	687	260	300	AA	A
255 / 45 ZR 19	104W	XL	8.5	900	340	713	255	300	AA	A
255 / 50 R 19	107W	XL	8.0	975	340	739	265	300	AA	A
255 / 55 R 19	111W	XL	8.0	1090	340	763	265	300	AA	A
255 / 60 R 19	113V	XL	7.5	1150	340	789	260	300	AA	A
265 / 30 ZR 19	93W	XL	9.5	650	340	643	271	300	AA	A
275 / 30 ZR 19	96Y	XL	9.5	710	340	649	278	300	AA	A
275 / 35 ZR 19	100Y	XL	9.5	800	340	675	278	300	AA	A
285 / 45 R 19	111W	XL	9.5	1090	340	739	285	300	AA	A
235 / 45 ZR 20	100W	XL	8.0	800	340	720	236	300	AA	A
235 / 55 ZR 20	105W	XL	7.5	925	340	766	245	300	AA	A
245 / 35 ZR 20	95W	XL	8.5	690	340	680	248	300	AA	A
245 / 40 ZR 20	99Y	XL	8.5	775	340	704	248	300	AA	A
245 / 45 ZR 20	103Y	XL	8.0	875	340	728	243	300	AA	A
245 / 50 ZR 20	102Y		7.5	850	300	754	253	300	AA	A
245 / 55 R 20	104V		7.5	900	300	778	253	300	AA	A
255 / 35 ZR 20	97W	XL	9.0	730	340	686	260	300	AA	A
255 / 40 ZR 20	101Y	XL	9.0	825	340	712	260	300	AA	A
255 / 45 ZR 20	105W	XL	8.5	925	340	738	255	300	AA	A
255 / 50 ZR 20	109W	XL	8.0	1030	340	764	265	300	AA	A
255 / 55 ZR 20	110W	XL	8.0	1060	340	788	265	300	AA	A
265 / 45 ZR 20	108Y	XL	9.0	1000	340	746	266	300	AA	A
265 / 50 R 20	111W	XL	8.5	1090	340	774	277	300	AA	A
275 / 30 ZR 20	97Y	XL	9.5	730	340	674	278	300	AA	A
275 / 35 ZR 20	102Y	XL	9.5	850	340	700	278	300	AA	A
275 / 40 R 20	106W	XL	9.5	950	340	728	278	300	AA	A
275 / 45 R 20	110W	XL	9.0	1060	340	756	273	300	AA	A
275 / 50 ZR 20	113W	XL	8.5	1150	340	784	284	300	AA	A
275 / 55 R 20	117W	XL	8.5	1285	340	810	284	300	AA	A
275 / 60 R 20	119V	XL	8.0	1360	340	838	279	300	AA	A
285 / 50 ZR 20	116W	XL	9.0	1250	340	794	297	300	AA	A
315 / 35 ZR 20	110Y	XL	11.0	1060	340	728	320	300	AA	A
265 / 40 ZR 21	105W	XL	9.5	925	340	745	271	300	AA	A
265 / 45 ZR 21	104W		9.0	900	300	771	266	300	AA	A
275 / 40 ZR 21	107Y	XL	9.5	975	340	753	278	300	AA	A
275 / 45 ZR 21	110W	XL	9.0	1060	340	781	273	300	AA	A
275 / 50 ZR 21	113W	XL	8.5	1150	340	809	284	300	AA	A
285 / 35 ZR 21	105Y	XL	10.0	925	340	733	290	300	AA	A
295 / 35 ZR 21	107Y	XL	10.5	975	340	739	301	300	AA	A
295 / 40 ZR 21	111Y	XL	10.5	1090	340	769	301	300	AA	A
315 / 35 ZR 21	111W	XL	11.0	1090	340	753	320	300	AA	A
325 / 30 ZR 21	108W	XL	11.5	1000	340	729	331	300	AA	A
275 / 40 ZR 22	107Y	XL	9.5	975	340	779	278	300	AA	A
275 / 50 ZR 22	111W		8.5	1090	300	835	284	300	AA	A
285 / 35 ZR 22	106W	XL	10.0	950	340	759	290	300	AA	A
285 / 45 ZR 22	114W	XL	9.5	1180	340	815	285	300	AA	A
295 / 30 ZR 22	103W	XL	10.5	875	340	737	301	300	AA	A
295 / 40 ZR 22	112W	XL	10.5	1120	340	795	301	300	AA	A



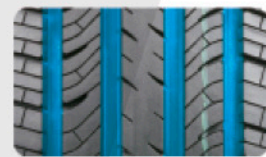
H201

UTQG:700 A B

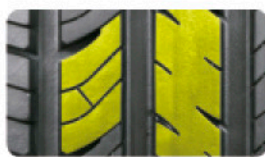
H201 is a high-end touring tire with four seasons pattern. Its super long wearing performance has excellent dry and wet performance. With low heat formula, it can bring safety guarantee for long-distance travel. At the same time, the optimized tire



Symmetrical pattern brings low noise



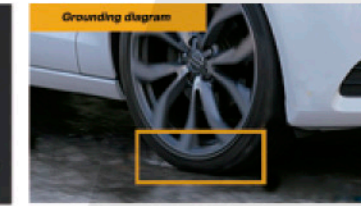
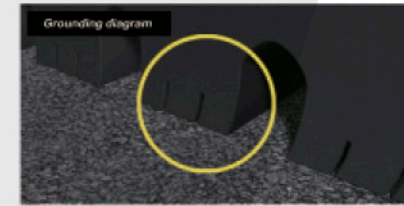
Four broad grooves provide good drainage performance



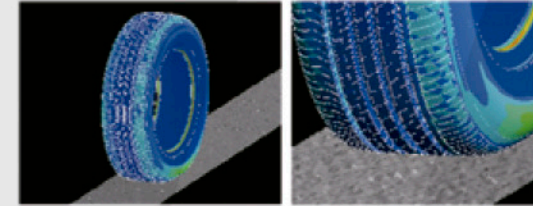
Special pattern and formula design are adopted to ensure super long mileage.



Seamless steel wire ring and crown strip ensure the uniformity of tire and improve the comfort.



The latest formula of solution polymerized styrene and silicon technology makes the grounding area closer; effectively improves wetland performance, reduces rolling resistance and provides excellent handling performance.



Validation of bionic technology of road noise analysis of road noise caused by tire driving on rough road, adjustment of tire structure, reduction of road noise.



■ Performance visualization



	Size					LI&SS	/XL	Standard Rim	Max. Load	Max. Pressure	Overall Diameter	Section Width	UTQG	
	P	inch	kg	kPa	mm			mm						
P	205 / 70 R 15 96T	6.0	710	300	669	209	700	A	B					
P	205 / 75 R 15 97T	5.5	730	300	689	203	700	A	B					
P	215 / 70 R 15 98T	6.5	750	300	683	221	700	A	B					
P	215 / 75 R 15 100T	6.0	800	300	703	216	700	A	B					
P	225 / 70 R 15 100T	6.5	800	300	697	228	700	A	B					
P	225 / 75 R 15 102T	6.0	850	300	719	223	700	A	B					
P	235 / 75 R 15 105T	6.5	925	300	733	235	700	A	B					
P	205 / 55 R 16 91T	6.5	615	300	632	214	700	A	B					



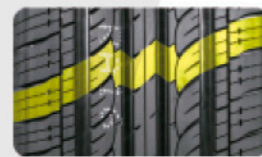
H202

UTQG:440 AA A

H202 is specially designed for private car users. The reasonable pattern pitch arrangement and special block design make it have extraordinary silence and excellent wet and dry grip. Its silicon-containing special formula reduces the rolling resistance coefficient, which is more environmentally friendly and fuel efficient. The optimized structural design improves the comfort of the tires and allows you to enjoy a beautiful car life!



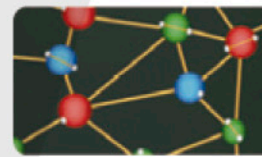
Balanced comprehensive performance: mute, fuel saving, safety and comfort.



The special tread contour and optimized cross-sectional contour design improve the handling stability and the comfort of the tire.



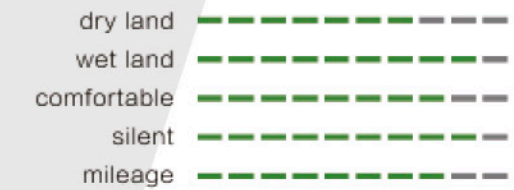
Optimized pattern pitch and sound absorption groove design of the shoulders bring excellent silent feeling to driving.



Excellent fuel-saving ability of silicon-containing formula, economical and money-saving.



Performance visualization



Size	LI&SS	/XL	Standard Rim	Max. Load	Max. Pressure	Overall Diameter	Section Width	UTQG		
			inch	kg	kPa	mm	mm	-	-	-
145 / 70 R 12	69T		4.5	325	300	509	150	-	-	-
155 / 70 R 12	73T		4.5	365	300	523	157	-	-	-
165 / 70 R 12	77T		5.0	412	300	537	170	-	-	-
155 / 70 R 13	75T		4.5	387	300	548	157	440	A	A
155 / 80 R 13	79T		4.5	437	300	578	157	440	A	A
165 / 65 R 13	77T		5.0	412	300	544	170	440	A	A
165 / 70 R 13	79T		5.0	437	300	562	170	440	A	A
165 / 70 R 13	83T	XL	5.0	487	340	562	170	440	A	A
175 / 60 R 13	77T		5.0	412	300	540	177	440	A	A
175 / 70 R 13	82T		5.0	475	300	576	177	440	A	A
185 / 70 R 13	86T		5.5	530	300	590	189	440	A	A
155 / 65 R 14	75T		4.5	387	300	558	157	440	AA	A
165 / 55 R 14	72H		5.0	355	300	538	170	440	AA	A
165 / 60 R 14	75T		5.0	387	300	554	170	440	AA	A
165 / 65 R 14	79H		5.0	437	300	570	170	440	AA	A
165 / 70 R 14	81T		5.0	462	300	588	170	440	AA	A
175 / 65 R 14	82H		5.0	475	300	584	177	440	AA	A
175 / 65 R 14	86T	XL	5.0	530	300	584	177	440	AA	A
175 / 70 R 14	84H		5.0	500	300	602	177	440	AA	A
185 / 60 R 14	82H		5.5	475	300	578	189	440	A	A
185 / 65 R 14	86H		5.5	530	300	596	189	440	AA	A
195 / 60 R 14	86H		6.0	530	300	590	201	440	AA	A
205 / 60 R 14	88H		6.0	560	300	602	209	440	AA	A
205 / 70 R 14	95H		6.0	690	300	644	209	440	AA	A
215 / 70 R 14	96H		6.5	710	300	658	221	440	AA	A
165 / 55 R 15	75H		5.0	387	300	563	170	440	AA	A
175 / 50 R 15	75H		5.5	387	300	557	182	440	AA	A
175 / 55 R 15	77H		5.5	412	300	573	182	440	AA	A
175 / 60 R 15	81H		5.0	462	300	591	177	440	AA	A
175 / 65 R 15	84H		5.0	500	300	609	177	440	AA	A
185 / 60 R 15	84H		5.5	500	300	603	189	440	A	A
185 / 65 R 15	88H		5.5	560	300	621	189	440	AA	A
185 / 65 R 15	92H	XL	5.5	560	340	621	189	440	AA	A
195 / 55 R 15	85V		6.0	515	300	595	201	440	AA	A
195 / 60 R 15	88V		6.0	560	300	615	201	440	AA	A
195 / 65 R 15	91V		6.0	615	300	635	201	440	AA	A
195 / 65 R 15	95H	XL	6.0	690	340	635	201	440	AA	A
205 / 60 R 15	91V		6.0	615	300	627	209	440	AA	A
205 / 60 R 15	91H		6.0	615	300	627	209	440	AA	A
205 / 65 R 15	94V		6.0	670	300	647	209	440	AA	A
205 / 65 R 15	94H		6.0	670	300	647	209	440	AA	A
215 / 60 R 15	94V		6.5	670	300	639	221	440	AA	A
215 / 60 R 15	94H		6.5	670	300	639	221	440	AA	A
215 / 65 R 15	96V		6.5	710	300	661	221	440	AA	A
215 / 65 R 15	100H	XL	6.5	800	340	661	221	440	AA	A
225 / 60 R 15	96H		6.5	710	300	651	228	440	AA	A
195 / 60 R 16	89H		6.0	580	300	640	201	440	AA	A
205 / 45 R 16	87V	XL	6.0	545	340	590	206	440	AA	A
205 / 55 R 16	91V		6.5	615	300	632	214	440	AA	A
205 / 60 R 16	92V		6.0	630	300	652	209	440	AA	A
205 / 60 R 16	96H	XL	6.0	710	340	652	209	440	AA	A
205 / 65 R 16	95H		6.0	690	300	672	209	440	AA	A
215 / 60 R 16	95V		6.5	690	300	664	221	440	AA	A
215 / 60 R 16	99H	XL	6.5	775	340	664	221	440	AA	A
215 / 65 R 16	98H		6.5	750	300	686	221	440	AA	A
225 / 60 R 16	98H		6.5	750	300	676	228	440	AA	A
225 / 70 R 16	103T		6.5	875	300	722	228	440	AA	A
235 / 60 R 16	100H		7.0	800	300	688	240	440	AA	A
215 / 60 R 17	96H		6.5	710	300	690	221	440	AA	A
225 / 65 R 17	102H		6.5	850	300	724	228	440	AA	A
235 / 65 R 17	104H		7.0	900	300	738	240	440	AA	A
225 / 60 R 18	100H		6.5	800	300	727	228	440	AA	A
165 / 65 R 13	77T	WSW	5.0	412	300	544	170	440	AA	A
175 / 70 R 13	82T	WSW	5.0	475	300	576	177	440	A	A
185 / 65 R 14	86H	WSW	5.5	530	300	596	189	440	AA	A
185 / 70 R 14	88H	WSW	5.5	560	300	616	189	440	AA	A
205 / 75 R 14	95H	WSW	5.5	690	300	664	203	440	AA	A
205 / 70 R 15	96T	WSW	6.0	710	300	669	209	440	AA	A
215 / 70 R 15	98T	WSW	6.5	750	300	683	221	440	AA	A
225 / 70 R 15	100T	WSW	6.5	800	300	697	228	440	AA	A
205 / 75 R 15	97T	WSW	5.5	730	300	689	203	440	AA	A
215 / 75 R 15	100T	WSW	6.0	800	300	703	216	440	AA	A
225 / 75 R 15	102T	WSW	6.0	850	300	719	223	440	AA	A



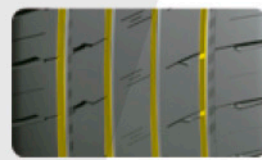
HD918

UTQG:420 AA A

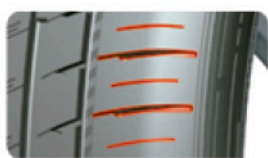
HD918 is a kind of tyre designed with silencing block + multi pitch arrangement pattern, It reduces the driving noise, improves the comfort, and creates a passenger car tire with safety and comfort as the core for private car owners.



The lightweight tire design USES new materials such as ultra-high strength light weight cord and single winding bead wire to reduce weight while maintaining tire performance.



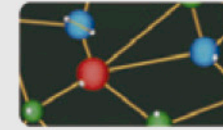
The main channel adopts 4 longitudinal channels, which can discharge water quickly and satisfy the need of dry wetland. Multi-pitch tread design and finite element simulation optimization can effectively reduce tire noise.



variable pitch pattern design combined with optimized pitch arrangement can effectively reduce the noise during driving and improve the driving quality.



The silencing block design can disturb the high-speed air flow in the groove, reduce the noise caused by the pump effect, and make it more quiet and comfortable.



High content of white carbon black and SSBR are used for tread, make the tyre get better wet braking performance and lower rolling resistance. More safety and energy conservation.

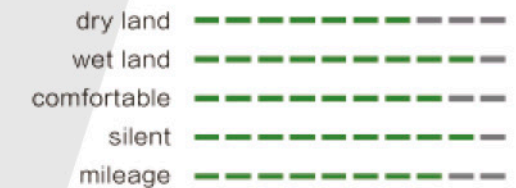


Noise reduction



fuel-efficient and environmental protection

Performance visualization



Application of advanced materials, light weight, fuel-efficient.

Multi pitch pattern design, effectively cut off air flow and reduce noise.

Using noise elimination block in groove, make more silent and comfortable.



Comfort



Fuel-efficient



Silence



Safety

Size	LI&SS	/XL	Standard Rim	Max. Load	Max. Pressure	Overall Diameter	Section Width	Label Values
								Noise
			inch	kg	kPa	mm	mm	
155 / 70 R 13	75T		4.5	387	300	548	157	70
165 / 65 R 13	77T		5.0	412	300	544	170	70
165 / 70 R 13	79T		5.0	437	300	562	170	70
175 / 70 R 13	82T		5.0	475	300	576	177	70
155 / 65 R 14	75T		4.5	387	300	558	157	70
165 / 60 R 14	75H		5.0	387	300	554	170	70
165 / 65 R 14	79H		5.0	437	300	570	170	70
165 / 70 R 14	81T		5.0	462	300	588	170	70
175 / 70 R 14	84H		5.0	500	300	602	177	70
185 / 60 R 14	82H		5.5	475	300	578	189	70
185 / 70 R 14	88H		5.5	560	300	616	189	70
195 / 70 R 14	91H		6.0	615	300	630	201	71
175 / 65 R 15	84H		5.0	500	300	609	177	70
185 / 55 R 15	82V		6.0	475	300	585	194	70
185 / 60 R 15	84H		5.5	500	300	603	189	70
195 / 55 R 15	85V		6.0	515	300	595	201	71
205 / 65 R 15	94V		6.0	670	300	647	209	71
195 / 55 R 16	91V	XL	6.0	615	340	620	201	72



K717

UTQG:420 AA A

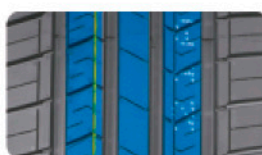
K717 is specially designed for private car users. The reasonable pattern pitch arrangement and special block design make it have extraordinary silence and excellent wet and dry grip. Its silicon-containing special formula reduces the rolling resistance coefficient, which is more environmentally friendly and fuel efficient. The optimized structural design improves the comfort of the tires and allows you to enjoy a beautiful car life!



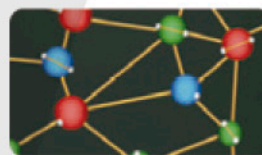
Balanced comprehensive performance: silent, fuel-saving, safe and comfortable.



Four seasons tire design.



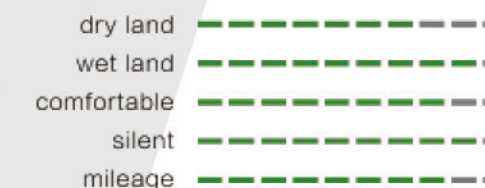
Three central ribs ensure stability in straight driving, and asymmetrical pattern design brings better handling.



Excellent fuel-saving ability of silicon-containing formula, economical and money-saving.



Performance visualization



Size				LI&SS	/XL	Standard Rim	Max. Load	Max. Pressure	Overall Diameter	Section Width	
						inch	kg	kPa	mm	mm	
165	/	70	R	13	79T		5.0	437	300	562	170
175	/	70	R	13	82T		5.0	475	300	576	177
185	/	70	R	13	86T		5.5	530	300	590	189
185	/	65	R	14	86H		5.5	530	300	596	189
205	/	70	R	14	95H		6.0	690	300	644	209
155	/	60	R	15	74H		4.5	375	300	567	157
175	/	65	R	15	84H		5.0	500	300	609	177
185	/	55	R	15	82V		6.0	475	300	585	194
185	/	60	R	15	84H		5.5	500	300	603	189
185	/	65	R	15	88H		5.5	560	300	621	189
195	/	50	R	15	82V		6.0	475	300	577	201
195	/	55	R	15	85V		6.0	515	300	595	201
195	/	60	R	15	88V		6.0	560	300	615	201
195	/	65	R	15	91V		6.0	615	300	635	201
205	/	65	R	15	94V		6.0	670	300	647	209
195	/	55	R	16	91V	XL	6.0	615	340	620	201
195	/	60	R	16	89H		6.0	580	300	640	201
205	/	55	R	16	91V		6.5	615	300	632	214
205	/	60	R	16	92V		6.0	630	300	652	209
205	/	65	R	16	95H		6.0	690	300	672	209
215	/	60	R	16	99H	XL	6.5	775	340	664	221
215	/	65	R	16	98H		6.5	750	300	686	221
225	/	60	R	16	98H		6.5	750	300	676	228
235	/	60	R	16	100H		7.0	800	300	688	240



K737

UTQG:420 AA A

K737 is a kind of tyre designed with silencing block + multi pitch arrangement pattern, It reduces the driving noise, improves the comfort, and creates a passenger car tire with safety and comfort as the core for private car owners.



Light weight tire design. Application of new materials such as super high strength steel wire and single wound bead steel wire, lightweight tire products improve comfort and reduce rolling resistance.



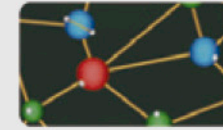
Multi pitch pattern design with optimized pitch arrangement, effectively reduce noise and improve driving feeling.



Three central ribs ensure stability in straight driving, and asymmetrical pattern design brings better handling.



The silencing block design can disturb the high-speed air flow in the groove, reduce the noise caused by the pump effect, and make it more quiet and comfortable.



High content of white carbon black and SSBR are used for tread, make the tyre get better wet braking performance and lower rolling resistance. More safety and energy conservation.



Comfort



Fuel-efficient



Silence



Safety

Performance visualization



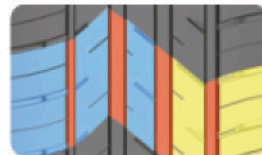
Size				LI&SS	/XL	Standard Rim	Max. Load	Max. Pressure	Overall Diameter	Section Width	UTQG			
						inch	kg	kPa	mm	mm				
165	/	70	R	13	79T	5.0	437	300	562	170	420	A	A	
175	/	70	R	13	82T	5.0	475	300	576	177	420	A	A	
175	/	75	R	13	85T	5.0	515	300			420	A	A	
165	/	65	R	13	77T	5.0	412	300	544	170	420	A	A	
185	/	70	R	13	86T	5.5	530	300	590	189	420	A	A	
155	/	65	R	14	75T	4.5	387	300	558	157	420	A	A	
165	/	60	R	14	75H	5.0	387	300	554	170	420	A	A	
165	/	65	R	14	79H	5.0	437	300	570	170	420	A	A	
165	/	70	R	14	81T	5.0	462	300	588	170	420	A	A	
175	/	65	R	14	82H	5.0	475	300	584	177	420	A	A	
175	/	70	R	14	84H	5.0	500	300	602	177	420	A	A	
175	/	75	R	14	86T	5.0	530	300	618	177	420	A	A	
185	/	60	R	14	82H	5.5	475	300	578	189	420	A	A	
185	/	65	R	14	86H	5.5	530	300	596	189	420	A	A	
185	/	70	R	14	88H	5.5	560	300	616	189	420	A	A	
195	/	60	R	14	86H	6.0	530	300	590	201	420	A	A	
195	/	65	R	14	89T	6.0	580	300	610	201	420	A	A	
195	/	70	R	14	91H	6.0	615	300	630	201	420	A	A	
195	/	70	R	14	95T	XL	6.0	690	340	630	201	420	A	A
155	/	60	R	15	74H	4.5	375	300	567	157	420	A	A	
175	/	55	R	15	77H	5.5	412	300	573	182	420	A	A	
175	/	60	R	15	81H	5.0	462	300	591	184	420	A	A	
175	/	65	R	15	84H	5.0	500	300	609	177	420	A	A	
185	/	55	R	15	82V	6.0	475	300	585	194	420	A	A	
185	/	60	R	15	84H	5.5	500	300	603	189	420	A	A	
185	/	65	R	15	88H	5.5	560	300	621	189	420	A	A	
195	/	50	R	15	82V	6.0	475	300	577	201	420	A	A	
195	/	55	R	15	85V	6.0	515	300	595	201	420	A	A	
195	/	60	R	15	88V	6.0	560	300	615	201	420	A	A	
195	/	65	R	15	91V	6.0	615	300	635	201	420	A	A	
205	/	60	R	15	91V	6.0	615	300	627	209	420	A	A	
205	/	65	R	15	94V	6.0	670	300	647	209	420	A	A	
185	/	55	R	16	83V	6.0	487	300	610	194	420	A	A	
195	/	55	R	16	91V	XL	6.0	615	340	620	201	420	A	A
195	/	60	R	16	89H	6.0	580	300	640	201	420	A	A	
205	/	50	R	16	87V	6.5	545	300	612	214	420	A	A	
205	/	55	R	16	91V	6.5	615	300	632	214	420	A	A	
205	/	60	R	16	92V	6.0	630	300	652	209	420	A	A	
205	/	65	R	16	95H	6.0	690	300	672	209	420	A	A	
215	/	60	R	16	99H	XL	6.5	775	340	664	221	420	A	A
215	/	65	R	16	98H	6.5	750	300	686	221	420	A	A	
225	/	60	R	16	98H	6.5	750	300	676	228	420	A	A	
235	/	60	R	16	100H	7.0	800	300	688	240	420	A	A	
215	/	60	R	17	96H	6.5	710	300	690	221	420	A	A	



S801

UTQG:420 AA A

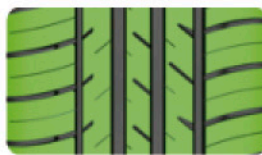
S801 is designed especially for successful people. The advanced asymmetrical tread design brings super silence, excellent grip in wet and dry conditions, handling, and uncommon driving experiences. The silica compound delivers reduced rolling resistance for better fuel efficiency. Sizes from 13" to 17" meet your different demands.



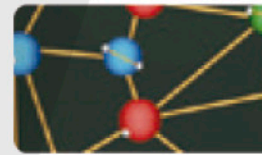
Balanced performance: Stability, Silence, Security, Mileage.



Asymmetrical tread design provides excellent grip and handling.



Strong block tread design improves mileage, stability, and security.



Silica compound delivers reduced rolling resistance for better fuel efficiency.



Comfort



Fuel-efficient



Silence



Safety

■ Performance visualization



Size			LI&SS	/XL	Standard Rim	Max. Load	Max. Pressure	Overall Diameter	Section Width	UTQG				
					inch	kg	kPa	mm	mm					
165	/	60	R	14	75T		5.0	387	300	554	170	420	A	A
165	/	70	R	14	81T		5.0	462	300	588	170	420	A	A
175	/	65	R	14	82H		5.0	475	300	584	177	420	A	A
175	/	70	R	14	84H		5.0	500	300	602	177	420	A	A
185	/	60	R	14	82H		5.5	475	300	578	189	420	A	A
185	/	65	R	14	86H		5.5	530	300	596	189	420	A	A
185	/	70	R	14	88H		5.5	560	300	616	189	420	A	A
195	/	60	R	14	86H		6.0	530	300	590	201	420	A	A
195	/	70	R	14	91T		6.0	615	300	630	201	420	A	A
195	/	70	R	14	91H		6.0	615	300	630	201	420	A	A
195	/	70	R	14	95T	XL	6.0	690	340	630	201	420	A	A
185	/	55	R	15	82V		6.0	475	300	585	194	420	A	A
185	/	60	R	15	84H		5.5	500	300	603	189	420	A	A
185	/	60	R	15	88H	XL	5.5	560	340	603	189	420	A	A
185	/	65	R	15	88H		5.5	560	300	621	189	420	A	A
185	/	65	R	15	92H	XL	5.5	630	340	621	189	420	A	A
195	/	50	R	15	82V		6.0	475	300	577	201	420	A	A
195	/	55	R	15	85V		6.0	515	300	595	201	420	A	A
195	/	60	R	15	88V		6.0	560	300	615	201	420	A	A
195	/	65	R	15	91V		6.0	615	300	635	201	420	A	A
195	/	65	R	15	95H	XL	6.0	690	340	635	201	420	A	A
205	/	65	R	15	94V		6.0	670	300	647	209	420	A	A
215	/	65	R	15	96H		6.5	710	300	661	221	420	A	A
215	/	65	R	15	100H	XL	6.5	800	340	661	221	420	A	A
205	/	50	R	16	87V		6.5	545	300	612	214	420	A	A
205	/	55	R	16	91V		6.5	615	300	632	214	420	A	A
205	/	60	R	16	92V		6.0	630	300	652	209	420	A	A
205	/	60	R	16	96H	XL	6.0	710	340	652	209	420	A	A
215	/	60	R	16	95V		6.5	690	300	664	221	420	A	A
215	/	60	R	16	99H	XL	6.5	775	340	664	221	420	A	A
215	/	65	R	16	98H		6.5	750	300	686	221	420	A	A
225	/	55	R	16	95V		7.0	690	300	654	233	420	A	A
225	/	60	R	16	98H		6.5	750	300	676	228	420	A	A
225	/	60	R	17	99H		6.5	775	300	702	228	420	A	A
225	/	65	R	17	102H		6.5	850	300	724	228	420	A	A



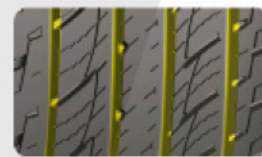
HP7

UTQG:500 AA A

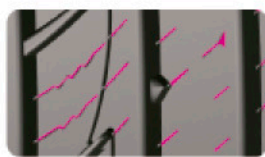
HP7 is designed with noise reduction block multi-pitch arrangement pattern, which reduces driving noise and improves comfort. It is a passenger car tire for private car owners with safety and comfort at the core.



Quiet comfort
Compound variable pitch pattern block design can effectively reduce pattern noise and improve comfort.



Excellent wetland performance
Four main pattern grooves cooperate with transverse groove to drain water quickly; strong shoulder pattern provides support when turning.



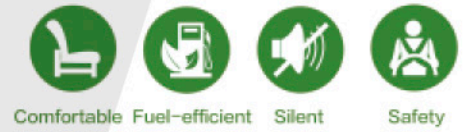
All season tire design
The vertical and horizontal pattern groove, combined with the new steel sheet technology, takes into account the drainage and tread rigidity, providing excellent four season performance.



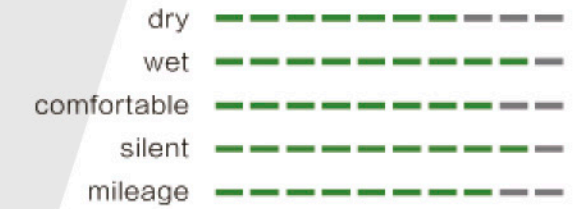
Optimization of grounding pressure distribution
Optimize the sea route ratio design, optimize the contour and material distribution, make the ground pressure distribution more balanced, and prolong the tire life.



Quiet and comfortable



Performance visualization



Size	LI&SS	/XL	Standard Rim	Max. Load	Max. Pressure	Overall Diameter	Section Width	UTQG		
								inch	kg	kPa
235 / 75 R 15	105H		6.5	925	300	733	235	500	A	A
215 / 70 R 16	100H		6.5	800	300	708	221	500	A	A
225 / 70 R 16	103H		6.5	875	300	722	228	500	A	A
235 / 60 R 16	100H		7.0	800	300	688	240	500	A	A
235 / 70 R 16	106H		7.0	950	300	736	240	500	A	A
245 / 70 R 16	111H	XL	7.0	1090	340	750	248	500	A	A
255 / 70 R 16	111H		7.5	1090	300	764	260	500	A	A
265 / 70 R 16	112H		8.0	1120	300	778	272	500	A	A
265 / 75 R 16	116H		7.5	1250	300	804	267	500	A	A
275 / 70 R 16	114H		8.0	1180	300	792	279	500	A	A
215 / 50 R 17	95H	XL	7.0	690	340	648	226	500	A	A
215 / 65 R 17	99H		6.5	775	300	712	221	500	A	A
225 / 60 R 17	99H		6.5	775	300	702	228	500	A	A
225 / 65 R 17	102H		6.5	850	300	724	228	500	A	A
235 / 55 R 17	99H		7.5	775	300	690	245	500	A	A
235 / 60 R 17	106H	XL	7.0	950	340	714	240	500	A	A
235 / 65 R 17	108H	XL	7.0	1000	340	738	240	500	A	A
245 / 65 R 17	111H	XL	7.0	1090	340	750	248	500	A	A
265 / 65 R 17	112H		8.0	1120	300	776	272	500	A	A
265 / 70 R 17	115H		8.0	1215	300	804	272	500	A	A
225 / 60 R 18	100H		6.5	800	300	727	228	500	A	A
235 / 50 R 18	101H	XL	7.5	825	340	693	245	500	A	A
235 / 55 R 18	104H	XL	7.5	900	340	715	245	500	A	A
235 / 60 R 18	107H	XL	7.0	975	340	739	240	500	A	A
235 / 65 R 18	106H		7.0	950	300	763	240	500	A	A
245 / 60 R 18	105H		7.0	925	300	751	248	500	A	A
255 / 55 R 18	109V	XL	8.0	1030	340	737	265	500	A	A
265 / 60 R 18	114V	XL	8.0	1180	340	775	272	500	A	A



RS23

UTQG:520 AA A

RS23 is a SUV tire suitable for all road conditions. While satisfying the performance of paved roads, it highlights the grip and sports performance of non-paved roads such as mountain roads, dirt roads and snow roads. The tiger-tooth pattern design provides powerful off-road performance for the car, and the use of a cut-resistant formula greatly improves the life of the tire pattern.



Tiger tooth-shaped three-dimensional block provides excellent grip performance on paved and non-paved roads.



The mixed pattern groove design guarantees the grip of mountain roads, mud and snow roads.



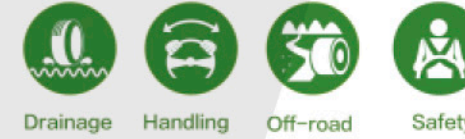
Special shoulder reinforcement design to prevent non-paved road from damaging the tires and bring you endless driving experience.



The irregular groove design guarantees the grip and strong off-road ability of non-paved roads.



[Tire Shoulder Scratch Resistance Design] Improves puncture resistance and scratch resistance.
[Tread Convex White Letter Design] Make the tire appearance eye-catching, beautiful and fashionable.



	Size				LI&SS	/XL	PR&LR	Standard Rim	Max. Load	Max. Pressure	Overall Diameter	Section Width	UTQG					
								inch	kg	kPa	mm	mm						
P	215	/	70	R	16			6.5	800	300	708	221	520	A	B			
P	225	/	70	R	16			6.5	875	300	722	228	520	A	B			
P	235	/	70	R	16			7.0	950	300	736	240	520	A	B			
P	245	/	70	R	16		XL	7.0	1090	340	750	248	520	A	B			
P	255	/	70	R	16			7.5	1090	300	764	260	520	A	B			
P	275	/	70	R	16			8.0	1180	300	792	279	520	A	B			
	235	/	65	R	17			7.0	900	300	738	240	520	A	B			
P	245	/	70	R	17			7.0	1060	300	776	248	520	A	B			
P	255	/	65	R	17			7.5	1060	300	764	260	520	A	B			
P	265	/	65	R	17			8.0	1120	300	776	272	520	A	B			
P	275	/	65	R	17		XL	8.0	1360	340	790	279	520	A	B			
P	285	/	65	R	17			8.5	1250	300	802	292	520	A	B			
	255	/	60	R	18		XL	7.5	1120	340	763	260	520	A	B			
P	265	/	60	R	18			8.0	1060	300	775	272	520	A	B			
P	285	/	60	R	18			8.5	1250	300	799	292	520	A	B			
P	285	/	50	R	20		XL	9.0	1250	340	794	297	520	A	B			
	31	x	10.50	R	15	LT		109S		6C	8.5	1030	350	775	268	-	-	-
LT	215	/	75	R	15			100/97S		6C	6.0	800/730	350	703	216	-	-	-
LT	225	/	75	R	15			102/99S		6C	6.0	850/775	350	719	223	-	-	-
LT	225	/	70	R	15			112/110R		8D	6.5	1120/1060	450	697	228	-	-	-
LT	235	/	75	R	15			104/101S		6C	6.5	900/825	350	733	235	-	-	-
LT	215	/	85	R	16			115/112S		10E	6.0	1215/1120	550	772	216	-	-	-
LT	225	/	75	R	16			115/112S		10E	6.0	1215/1120	550	744	223	-	-	-
LT	235	/	70	R	16			110/107S		8D	7.0	1060/975	450	736	240	-	-	-
LT	235	/	85	R	16			120/116S		10E	6.5	1400/1250	550	806	235	-	-	-
LT	245	/	75	R	16			120/116S		10E	7.0	1400/1250	550	774	248	-	-	-
LT	265	/	70	R	16			117/114T		8D	8.0	1285/1180	450	778	272	-	-	-
LT	235	/	65	R	17			109/105R		8D	7.0	1030/925	450	738	240	-	-	-
LT	245	/	65	R	17			117/114R		10E	7.0	1285/1180	550	750	248	-	-	-
LT	265	/	70	R	17			121/118S		10E	8.0	1450/1320	550	804	272	-	-	-
LT	265	/	65	R	17			120/117Q		10E	8.0	1400/1285	550	776	272	-	-	-
LT	245	/	75	R	17			121/118R		10E	7.0	1450/1320	550	800	248	-	-	-
LT	245	/	60	R	18			112/109Q		8D	7.0	1120/1030	450	751	248	-	-	-
LT	265	/	75	R	16			123/120S		10E	7.5	1550/1400	550	804	267	-	-	-
LT	285	/	75	R	16			126/123S		10E	8.0	1700/1550	550	834	286	-	-	-



RS25

65/70/75/85



RS25 is a SUV tire suitable for all road conditions. While satisfying the performance of paved roads, it highlights the grip and sports performance of non-paved roads such as mountain roads, dirt roads and snow roads. The tiger-tooth pattern design provides powerful off-road performance for the car, and the use of a cut-resistant formula greatly improves the life of the tire pattern.



The optimized combination design of huge blocks and grooves provide excellent driving force, grip and anti-skid performance on non-paved roads.



The protective dam and rough design on the tire shoulder and the reinforced design of the tyre shoulder, to improve the impact resistance of the shoulder, thus greatly improve the durability.



The double-layer reinforced belt layer and the special specification three-layer reinforced carcass design greatly improve the overall strength of the tire and catch the requirements of the worst road conditions.



Single winding hexagonal bead design, which greatly improves the durability stability of the tire bead.



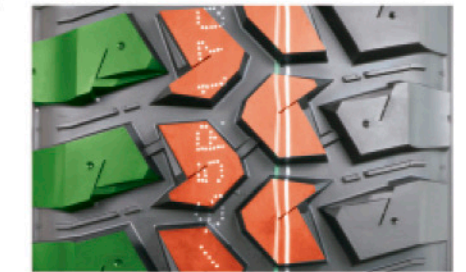
[Outstanding white letter design (RWL) tyre sidewall]
Making the tyre of eye-catching, beautiful, fashion

[Tyre shoulder friction line design]
Improved stabbing and rubbing resistance, durable wear resistance.

Triple row mud technology pattern ditch can intelligently clean residual silt.

Triple stone row technique tread pattern can row stone by itself.

Triple climbing technique tire shoulder provides super grip.



Performance visualization



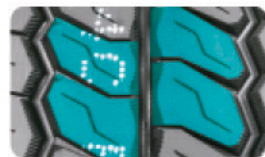
Size				LI&SS	PR&LR	Standard Rim	Max. Load	Max. Pressure	Overall Diameter	Section Width	
						inch	kg	kPa	mm	mm	
	185		R 14	C	102/100Q	8D	5.5	850/800	450	652	189
	31	x 10.50	R 15	LT	109Q	6C	8.5	1030	350	775	268
	195	/ 70	R 15	C	104/102Q	8D	6.0	900/850	450	655	201
LT	215	/ 75	R 15		106/103Q	8D	6.0	950/875	450	703	216
LT	235	/ 75	R 15		104/101Q	6C	6.5	900/825	350	733	235
LT	235	/ 85	R 16		120/116Q	10E	6.5	1380/1260	550	806	235
LT	245	/ 70	R 16		106/103Q	6C	7.0	950/875	350	750	248
LT	245	/ 75	R 16		120/116Q	10E	7.0	1380/1260	550	774	248
LT	265	/ 70	R 16		117/114Q	8D	8.0	1285/1180	450	778	272
LT	225	/ 65	R 17		107/103Q	8D	6.5	975/875	450	724	228
LT	235	/ 65	R 17		109/105Q	8D	7.0	1285/1180	650	738	240
LT	245	/ 65	R 17		111/108Q	8D	7.0	1090/1000	450	750	248
LT	265	/ 65	R 17		120/117Q	10E	8.0	1400/1285	550	772	276
LT	265	/ 70	R 17		121/118Q	10E	8.0	1450/1320	550	804	272
LT	265	/ 60	R 18		119/116Q	10E	8.0	1360/1250	550	775	272
LT	265	/ 75	R 16		123/120Q	10E	7.5	1550/1400	550	804	267
LT	285	/ 75	R 16		126/123Q	10E	8.0	1700/1550	550	834	286



RS01

UTQG:800 AA A

RS01 is designed for taxis. Adopt three grooves and large blocks design, especially the use of ultra-fine carbon black, which greatly improves the abrasion resistance and safety of the tire, reduces the rolling resistance of the tire, and improves operation for taxi drivers while ensuring safety income.



Two continuous central rib patterns provide superior abrasion resistance.



Hyperfine carbon ingredient improve longer mileage and safety, reducing rolling resistance. Bring security and benefit for taxi drivers.



Continuous shoulder block design provides superior driving stability and handling performance for cars under high load conditions.



Special contour design to prevent tire wear.

Wear-resisting durable

[Uniform design of grounding pressure]

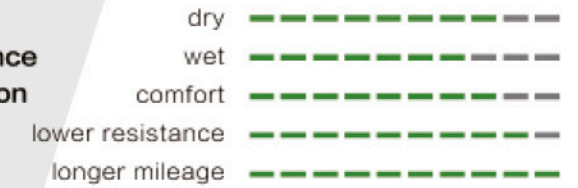
Restrain shoulder deformation and shoulder wear

Longer performance life

Optimized the formula of tread rubber to strengthen the strength of tread and prevent the deformation of tread at the later stage of use



Performance visualization



Size				LI&SS	/XL	Standard Rim	Max. Load	Max. Pressure	Overall Diameter	Section Width	UTQG			
						inch	kg	kPa	mm	mm				
165	/	70	R	13	83T	XL	5.0	487	340	562	170	800	A	B
175	/	70	R	13	82T		5.0	475	300	576	177	800	A	B
185	/	70	R	13	86T		5.5	530	300	590	189	800	A	B
165	/	70	R	14	81T		5.0	462	300	588	170	800	A	B
175	/	65	R	14	86T	XL	5.0	530	340	584	177	800	A	B
175	/	70	R	14	84T		5.0	500	300	602	177	800	A	B
185	/	60	R	14	82T		5.5	475	300	578	189	800	A	B
185	/	65	R	14	86T		5.5	530	300	596	189	800	A	B
195	/	60	R	14	86T		6.0	530	300	590	201	800	A	B
195	/	65	R	14	93T	XL	6.0	650	340	610	201	800	A	B
185	/	65	R	15	88T		5.5	560	300	621	189	800	A	B
185	/	60	R	15	84H		5.5	500	300	603	187	800	A	B
195	/	60	R	15	88H		6.0	560	300	615	201	800	A	B
195	/	65	R	15	91H		6.0	615	300	635	201	800	A	B
205	/	65	R	15	94H		6.0	670	300	647	209	800	A	B
205	/	55	R	16	91V		6.5	615	300	632	214	800	A	B



RS01

60/65/70/75

RS01 is a light truck tire for business use, which can meet the overweight test under various extremely harsh conditions. It is specially designed to improve the business operation income.



Two continuous central rib patterns provide superior wear resistance.



The design of convex surface protruding out of tread pattern block provides superior traction performance and anti sideslip performance for tire.



The design of continuous pattern blocks on the shoulder provide excellent driving stability and handling performance for the vehicle under high load.

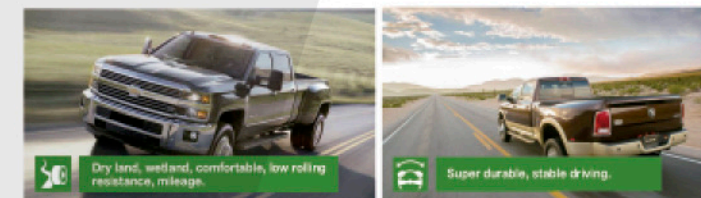


Special contour design to prevent tire eccentric wear.

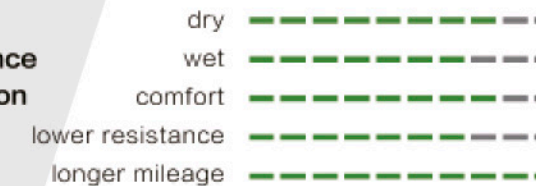
Wear-resisting durable

[Uniform design of grounding pressure]

Restrain shoulder deformation and shoulder wear



Performance visualization



Size	LI&SS	/XL	PR	Standard Rim	Max. Load	Max. PrCsurC	OvCrall DiamCtCr	SCction Width	
				inch	kg	kPa	mm	mm	
155		R 12 C	88/86T	8	4.5	560/530	450	550	157
145		R 12 C	80/78T	6	4	450/425	350	537	145
165		R 13 C	94/93T	8	4.5	670/650	450	594	165
165	/ 70	R 13 C	88/86T	6	5.0	560/530	375	562	170
175		R 13 C	97/95Q	8	5.0	730/690	450	610	177
165		R 14 C	96/95T	8	4.5	710/690	450	620	165
175		R 14 C	99/98T	8	5.0	775/750	450	634	178
175	/ 70	R 14 C	95/93T	8	5.0	690/650	375	602	177
175	/ 75	R 14 C	99/98T	8	5.0	775/750	475	618	177
175	/ 65	R 14 C	90/88T	6	5.0	600/560	375	584	177
185		R 14 C	102/100T	8	5.5	850/800	450	650	188
185	/ 70	R 14 C	102/100T	8	5.5	850/800	450		
195		R 14 C	106/104T	8	5.5	950/900	450	666	198
185		R 15 C	103/102T	8	5.5	875/850	450	674	188
195		R 15 C	106/104T	8	5.5	950/900	450	693	196
195	/ 70	R 15 C	104/102T	8	6.0	900/850	450	655	201
205	/ 65	R 15 C	102/100T	8	6.0	850/800	375	647	209
205	/ 70	R 15 C	106/104T	8	6.0	950/900	450	669	209
215	/ 65	R 15 C	104/102T	8	6.5	900/850	375	661	221
215	/ 70	R 15 C	109/107T	8	6.5	1030/975	450	683	221
225	/ 70	R 15 C	112/110T	8	6.5	1120/1060	450	697	228
185	/ 75	R 16 C	104/102T	8	5.0	900/850	475	684	184
195	/ 65	R 16 C	104/102T	8	6.0	900/850	475	660	201
195	/ 75	R 16 C	107/105T	8	5.5	975/925	475	698	196
205	/ 65	R 16 C	107/105T	8	6.0	975/925	475	672	209
205	/ 75	R 16 C	113/111T	10	5.5	1150/1090	525	714	203
215	/ 60	R 16 C	108/106T	8	6.5	1000/950	475	664	221
215	/ 65	R 16 C	109/107T	8	6.5	1030/975	475	686	221
215	/ 70	R 16 C	108/106T	8	6.5	1000/950	375	708	221
215	/ 75	R 16 C	116/114T	10	6.0	1250/1180	525	728	216
225	/ 65	R 16 C	112/110T	8	6.5	1120/1060	475	698	228
235	/ 65	R 16 C	115/113T	8	7.0	1215/1150	475	712	240
185		R 14 C	102/100T	WSW 8	5.5	850/800	450	650	188
195		R 14 C	106/104T	WSW 8	5.5	950/900	450	666	198
195		R 15 C	106/104T	WSW 8	5.5	950/900	450	693	196

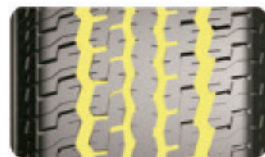


RS03

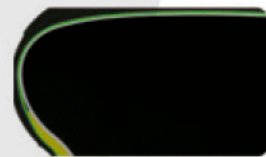
75/80/85



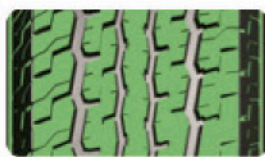
RS03 is designed especially for specialty trailer. The Z shape tread blocks provide excellent traction.



4 draining grooves bring excellent drainage.



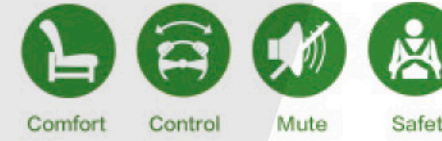
Wider tread brings extra grips and traction.



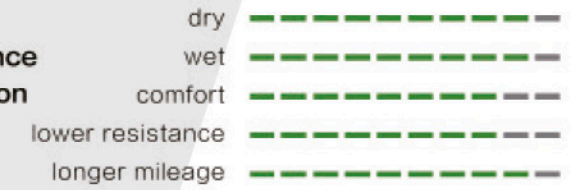
Soft central blocks and hard Z shape blocks can meet all terrains.



Thick sidewall and special wearing compound bring long mileage.



■ Performance visualization



Size	LI&SS	P.R	Standard Rim	Max. Load	Max. Pressure	Overall Diameter	Section Width
ST 175 / 80 R 13	91/87M	6C	5	615/545	350	610	177
ST 205 / 75 R 14	100/96M	6C	5.5	800/710	350	664	203
ST 215 / 75 R 14	102/98M	6C	6	850/750	350	678	216
ST 205 / 75 R 15	101/97M	6C	5.5	825/730	350	689	203
ST 205 / 75 R 15	107/102M	8D	5.5	975/850	450	689	203
ST 225 / 75 R 15	113/108M	8D	6	1150/1000	450	719	223
ST 225 / 75 R 15	117/112M	10E	6	1285/1120	550	719	223
ST 235 / 80 R 16	124/120M	10E	6.5	1600/1410	590	782	235
ST 235 / 85 R 16	125/121M	10E	6.5	1650/1450	550	806	235



RS07

7.00/7.50



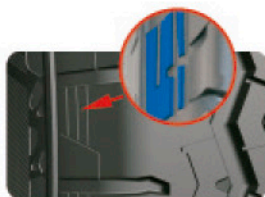
RS07 is a kind of SUV and pick-up truck tire with mixed pattern designed for unique climate and environment, which can adapt to all kinds of comprehensive road conditions.



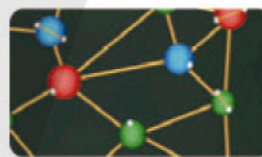
3 draining grooves bring excellent drainage.



Soft central blocks and hard Z shape blocks can meet all terrains.



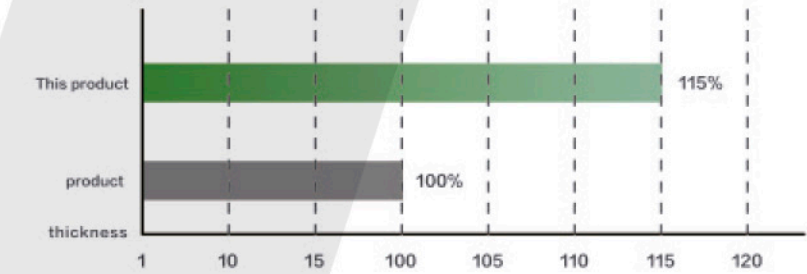
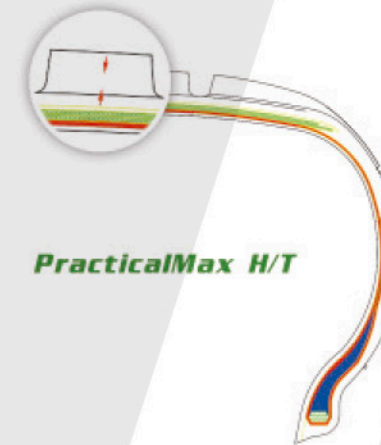
The design of large three-dimensional decorative steps at the shoulder of the tire provides great heat dissipation capacity, and the tire can cope with the hot and dry climate.



The high toughness and tear resistance formula is designed to ensure the performance of tyres in severe environment.

The design of base glue thickness strengthening

The thickness of the base rubber is strengthened to prevent the tread groove from cracking.



■ Performance visualization

- dry
- wet
- comfort
- lower resistance
- longer mileage

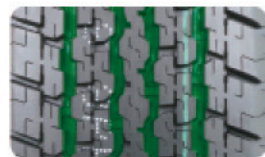
Size	LI&SS	/XL	Standard Rim	Max. Load	Max. Pressure	Overall Diameter	Section Width
			inch	kg	kPa	mm	mm
7.00	R 16 LT	115/110N	5.50F	1215/1060	670	775	200
7.50	R 16 LT	122/118N	6.00G	1500/1320	770	805	205



RS27

UTQG:360 B B

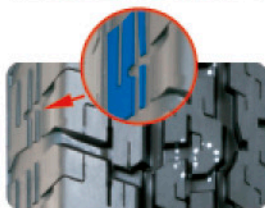
RS27 is a kind of SUV and pick-up truck tire with mixed pattern designed for unique climate and environment, which can adapt to all kinds of comprehensive road conditions.



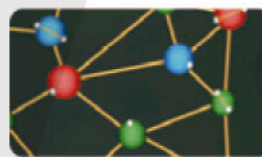
Four main zigzag grooves and transverse grooves provide excellent wet grip performance.



horizontal coarse and fine grooves cooperate with the design of the longitudinal small grooves to maximize the sediment discharge and greatly improve the grip on the sediment ground.



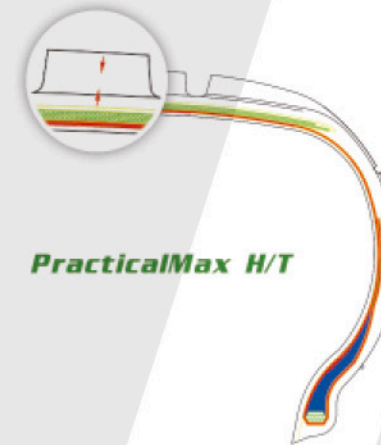
The design of large three-dimensional decorative steps at the shoulder of the tire provides great heat dissipation capacity, and the tire can cope with the hot and dry climate.



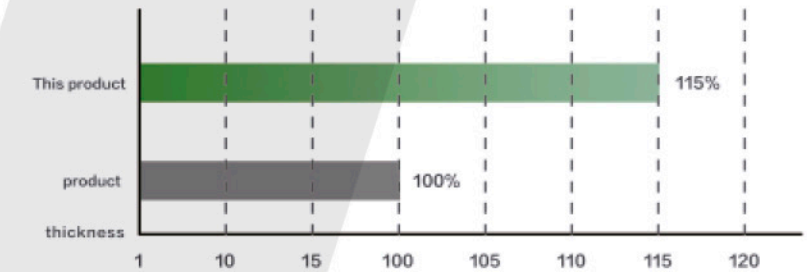
The high toughness and tear resistance formula is designed to ensure the performance of tyres in severe environment.

The design of base glue thickness strengthening

The thickness of the base rubber is strengthened to prevent the tread groove from cracking.



PracticalMax H/T



■ Performance visualization

- dry -----
- wet -----
- comfort -----
- lower resistance -----
- longer mileage -----

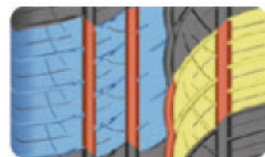
Size	LI&SS	PR	Standard Rim	Max. Load	Max. Pressure	Overall Diameter	Section Width	UTQG		
								inch	kg	kPa
255 / 70 R 15 C	112/110S	8	7.5	1120/1060	375	739	260	—	—	—
205 / 70 R 15 C	106/104T	8	6.0	950/900	450	669	209	—	—	—
205 R 16 C	110/108S	8	6.0	1110/1000	450	736	208	—	—	—
205 / 75 R 16 C	113/111R	10	5.5	1150/1090	525	714	203	—	—	—
LT 235 / 85 R 16	120/116S	10	6.5	1400/1250	550	806	235	—	—	—
265 / 65 R 17	112H	4	8.0	1120	300	776	272	360	B	B
285 / 65 R 17	116H	4	8.5	1250	300	802	292	360	B	B
265 / 70 R 18	116T	4	8.0	1250	300	829	272	500	B	B
285 / 60 R 18	116H	4	8.5	1250	300	799	292	360	B	B



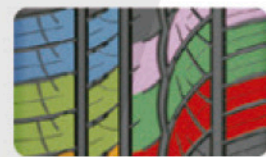
H2000

UTQG:420 AA A

H2000 is designed for top grade users seeking ultra-high performance. The asymmetrical, unidirectional tread design provides excellent handling and comfort. All season design delivers excellent wet grip. It delivers all outstanding performance and brings you excellent fun of driving.



The asymmetrical design provides excellent grip in both dry and wet conditions, enhances turning handling.



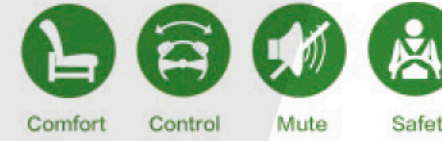
Variable pitch on both sides reduces noise.



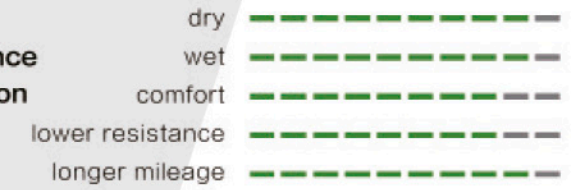
Strong circumferential central rib improves straight line stability.



The corrugated central grooves direct water, the wide-angle grooves enhance anti-hydroplaning capabilities. It runs easily on downpour highway.



■ Performance visualization



Size			LI&SS	/XL	Standard Rim	Max. Load	Max. Pressure	Overall Diameter	Section Width	UTQG				
					inch	kg	kPa	mm	mm					
205	/	50	ZR	16	87W		6.5	545	300	612	214	420	AA	A
205	/	55	ZR	16	91W		6.5	615	300	632	214	420	AA	A
215	/	55	ZR	16	93W		7.0	650	300	642	226	420	AA	A
225	/	55	ZR	16	95W		7.0	690	300	654	233	420	AA	A
205	/	45	ZR	17	88W	XL	7.0	560	340	616	206	420	AA	A
215	/	45	ZR	17	91W	XL	7.0	615	340	626	213	420	AA	A
225	/	45	ZR	17	94W	XL	7.5	670	340	634	225	420	AA	A
235	/	45	ZR	17	97W	XL	8.0	730	340	644	236	420	AA	A
245	/	45	ZR	17	99W	XL	8.0	775	340	652	243	420	AA	A
225	/	40	ZR	18	92W	XL	8.0	630	340	637	230	420	AA	A
235	/	40	ZR	18	95W	XL	8.5	690	340	645	241	420	AA	A
245	/	40	ZR	18	97W	XL	8.5	730	340	653	248	420	AA	A

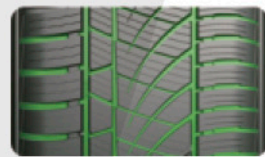


A4
UTQG:420 A A

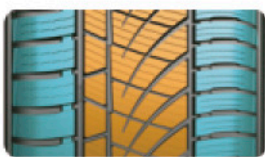
A4 all Season product with marvelous overall performance.



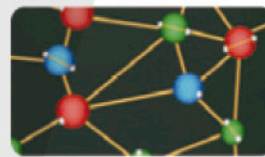
A newly optimized profile design provides a comfortable ride all season.



Using an all new asymmetric tread design to accommodate all season climates with excellent handling and steering performance in wet conditions.



Diverse and irregular pitch order decreases vibrations emitted from the tire to reduce



Usage of functional ALL-silicon materials brings excellent handling capabilities in snowy and wet conditions.



Performance visualization



Size	LI&SS	/XL	Standard Rim	Max. Load	Max. Pressure	Overall Diameter	Section Width	UTQG		
								inch	kg	kPa
165 / 70 R 13	79T		5.0	437	300	562	170	420	A	A
175 / 70 R 13	82T		5.0	475	300	576	177	420	A	A
155 / 65 R 14	75T		4.5	387	300	558	157	420	A	A
165 / 65 R 14	79T		5.0	437	300	570	170	420	A	A
165 / 70 R 14	81T		5.0	515	300	588	170	420	A	A
165 / 70 R 14	85T	XL	5.0	515	340	588	170	420	A	A
175 / 65 R 14	82T		5.0	530	300	584	177	420	A	A
175 / 65 R 14	86T	XL	5.0	530	340	584	177	420	A	A
175 / 70 R 14	88T	XL	5.0	560	340	602	177	420	A	A
185 / 60 R 14	82H		5.5	475	300	578	189	420	A	A
185 / 65 R 14	86T		5.5	530	300	596	189	420	A	A
185 / 55 R 15	82H		6.0	530	300	585	194	420	A	A
185 / 55 R 15	86H	XL	6.0	530	340	585	194	420	A	A
185 / 60 R 15	88H	XL	5.5	560	340	603	189	420	A	A
185 / 65 R 15	88H		5.5	560	300	621	189	420	A	A
195 / 55 R 15	85H		6.0	515	300	595	201	420	A	A
195 / 60 R 15	88H		6.0	560	300	615	201	420	A	A
195 / 65 R 15	91H		6.0	690	300	635	201	420	A	A
195 / 65 R 15	95H	XL	6.0	690	340	635	201	420	A	A
195 / 55 R 16	87H		6.0	545	300	620	201	420	A	A
205 / 55 R 16	91V		6.5	670	300	632	214	420	A	A
205 / 55 R 16	94V	XL	6.5	670	340	632	214	420	A	A
205 / 60 R 16	96H	XL	6.0	710	340	652	209	420	A	A
215 / 55 R 16	97V	XL	7.0	730	340	642	226	420	A	A
225 / 45 R 17	94V	XL	7.5	670	340	634	225	420	A	A



S3000

UTQG:200 AA A

S3000 is a drift tyre that pursues high-speed driving control and enjoys endless fun of driving on the street and track.



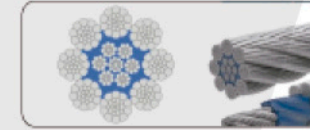
It adopts the new unique filler and the special tread formula of multi-functional materials to quickly reach the hot-melt temperature, soften the hardness of the tread, generate viscosity, provide great grip when driving and braking, and prevent sideslip when turning.



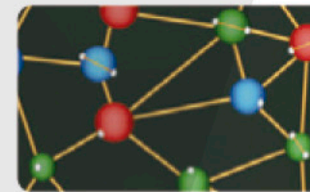
The cross support design makes the rigidity of the center tyre shoulder most moderate distribution, improves the grounding when turning, and ensures the drainage performance.



The enhanced sidewall design can prevent the bulge or damage when the tire collides with the edge of the track. When the tire accelerates, brakes or turns at high speed, it can bear strong longitudinal tension and centrifugal force.



The tire adopts aramid, super strong steel wire and special sidewall rubber to improve tire rigidity, reduce tire roll when cornering and ensure good handling.



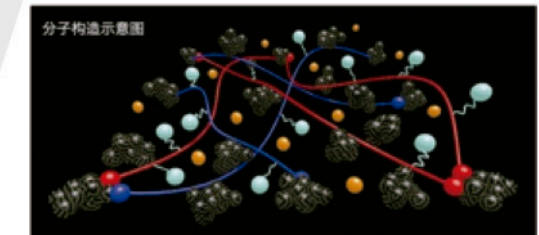
The specific formula design is applicable to comprehensive track, dry track and wet track respectively, with tread hardness of 45-88, providing excellent grip and low hardness wear resistance under various extreme conditions.

Ultra high grip performance

by adopting the newly developed racing tread rubber 2R



Draining Braking Handling Grip performance



Size				LI&SS	/XL	Standard Rim	Max. Load	Max. Pressure	Overall Diameter	Section Width	UTQG			
						inch	kg	kPa	mm	mm				
205	/	45	R	16	87W	XL	7.0	545	340	590	206	200	AA	A
215	/	45	ZR	17	91W	XL	7.0	615	340	626	213	200	AA	A
235	/	45	R	17	97W	XL	8.0	730	340	644	236	200	AA	A
225	/	40	R	18	92W	XL	8.0	630	340	637	230	200	AA	A
225	/	45	ZR	18	95W	XL	7.5	690	340	659	225	200	AA	A
235	/	40	R	18	95W	XL	8.5	690	340	645	241	200	AA	A
255	/	35	R	18	94W	XL	9.0	670	340	635	260	200	AA	A
265	/	35	R	18	97W	XL	9.5	730	340	643	271	200	AA	A



SORT	WINTER - RW501
PATTERN	
PERFORMANCE	Snow Drainage Braking Handling

SORT	WINTER - AW11	WINTER - AW33
PATTERN		
PERFORMANCE	Snow Drainage Braking Handling	Snow Drainage Braking Handling

SORT	WINTER - RW506	WINTER - RW505
PATTERN		
PERFORMANCE	Snow Drainage Braking Handling	Snow Drainage Braking Handling



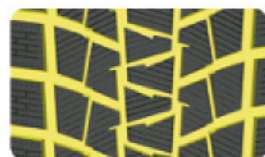
RW501

45/50/55/60/65/70/75

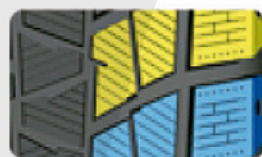


Winter tyre Ice/snow road Braking Handling

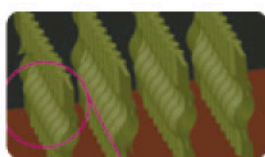
RW501 is a winter tire product specially designed for the ice and snow area, so that you can enjoy the driving pleasure on the ice and snow ground and the slippery road



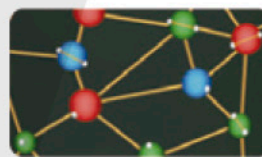
Four longitudinal grooves and continuous transverse grooves from the middle to the shoulder provide excellent snow discharge performance.



Optimized tread design of shoulder and small absorption holes greatly improve the grip of ice and wet road.



The 3D three-dimensional groove design with fine tread improves the grip and traction of the ice and snow ground, and improves the rigidity of the pattern block to provide excellent handling and driving performance of the ice and snow ground.



Low temperature resistant compound formula of tread has strong grip on snow and ice, improves braking performance and ensures safety.

Size				XL	LI&SS	Standard Rim	Max. Load	Max. Pressure	Overall Diameter	Section Width	Notes	
						inch	kg	kPa	mm	mm		
155	/	65	R	13		73T	4.5	365	300	532	157	
165	/	70	R	13		79T	5.0	437	300	562	170	
175	/	70	R	13		82T	5.0	475	300	576	177	
165	/	60	R	14		75T	5.0	387	300	554	170	
165	/	70	R	14		81T	5.0	462	300	588	170	
175	/	65	R	14		82T	5.0	475	300	584	177	
175	/	70	R	14		84T	5.0	500	300	602	177	
185	/	60	R	14		82T	5.5	475	300	578	189	
185	/	65	R	14		86T	5.5	530	300	596	189	
185	/	70	R	14		88T	5.5	560	300	616	189	
195	/	60	R	14		86T	6.0	530	300	590	201	
185	/	60	R	15		84H	5.5	500	300	603	189	
185	/	65	R	15		88H	5.5	560	300	621	189	
195	/	55	R	15		85H	6.0	515	300	595	201	
195	/	60	R	15		88H	6.0	560	300	615	201	
195	/	65	R	15	XL	95T	6.0	690	340	635	201	
205	/	65	R	15		94H	6.0	670	300	647	209	
235	/	75	R	15	XL	109T	6.5	1030	340	733	235	
195	/	60	R	16		89T	6.0	580	300	640	201	
205	/	55	R	16		91H	6.5	615	300	632	214	
205	/	60	R	16	XL	96H	6.0	710	340	652	209	
225	/	55	R	16	XL	99H	7.0	775	340	654	233	
215	/	60	R	16	XL	99H	6.5	775	340	664	221	
215	/	65	R	16		98H	6.5	750	300	686	221	
215	/	70	R	16		100T	6.5	800	300	708	221	
225	/	60	R	16		98T	6.5	750	300	676	228	
225	/	70	R	16	XL	107T	6.5	975	340	722	228	
235	/	60	R	16		100T	7.0	800	300	688	240	
235	/	70	R	16		106T	7.0	950	300	736	240	
245	/	70	R	16		107T	7.0	975	300	750	248	
265	/	70	R	16		112T	8.0	1120	300	778	272	
215	/	50	R	17	XL	95H	7.0	690	340	648	226	
215	/	55	R	17		94H	7.0	670	300	668	226	
215	/	60	R	17		96H	6.5	710	300	690	221	
225	/	50	R	17	XL	98H	7.0	750	340	658	233	
225	/	55	R	17	XL	101H	7.0	825	340	680	233	
225	/	60	R	17		99H	6.5	775	300	702	228	
225	/	65	R	17		102T	6.5	850	300	724	228	
235	/	55	R	17	XL	103H	7.5	875	340	690	245	
235	/	65	R	17	XL	108T	7.0	1000	340	738	240	
245	/	65	R	17	XL	111H	7.0	1090	340	750	248	
265	/	65	R	17		112T	8.0	1250	340	776	272	
215	/	55	R	18		95H	7.0	690	300	693	226	
225	/	45	R	18		91H	7.5	615	300	659	225	
225	/	55	R	18		98H	7.0	750	300	705	233	
225	/	60	R	18	XL	104H	6.5	900	340	727	228	
235	/	50	R	18	XL	101H	7.5	825	340	693	245	
235	/	55	R	18		100H	7.5	800	300	715	245	
235	/	60	R	18	XL	107T	7.0	975	340	739	240	
245	/	45	R	18	XL	100H	8.0	800	340	677	243	
245	/	60	R	18		105H	7.0	925	300	751	248	
255	/	55	R	18		105H	7.0	925	300	737	265	
265	/	60	R	18	XL	114T	8.0	1180	340	775	272	
285	/	60	R	18	XL	120H	8.5	1400	340	799	292	
245	/	55	R	19		103H	7.5	875	300	753	253	
255	/	50	R	19	XL	107H	8.0	975	340	739	265	
265	/	50	R	19	XL	110H	8.5	1060	340	749	277	
255	/	50	R	20	XL	109H	8.0	1030	340	764	265	
275	/	45	R	20	XL	110H	9.0	1060	340	756	273	
165			R	13		94/93T	4.5	670/650	450	596	167	
165			R	13		94/93T	4.5	670/650	450	596	167	
175			R	14		99/98T	5.0	775/730	450	634	178	
175			R	14		99/98T	5.0	775/730	450	634	178	
185			R	14		102/100S	5.5	850/800	450	650	188	
185			R	14		102/100S	5.5	850/800	450	650	188	
195	/	70	R	15		99/96Q	6	775/710	450	655	201	
195	/	70	R	15		104/102R	6.0	900/850	450	655	201	
205	/	70	R	15		106/104S	6.0	950/900	450	669	209	
205	/	70	R	15		106/104S	6.0	950/900	450	669	209	
225	/	70	R	15		106/103S	6.5	950/875	450	697	228	
225	/	70	R	15		112/110S	6.5	1120/1060	450	697	228	
215	/	70	R	15		98/95T	6.5	750/690	350	683	221	
215	/	75	R	15		100/97T	6.0	800/730	350	703	216	
235	/	75	R	15		104/101T	6.5	900/825	350	733	235	



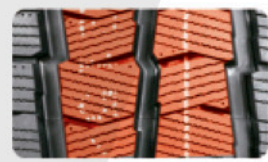
AW11

45/50/55/60/65/70/75

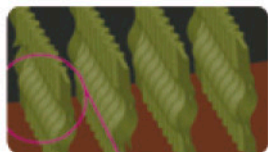
AW11 is specially designed for light truck in ice and snow area of winter, it makes you enjoy the driving on the ice & snow road and slippery road.



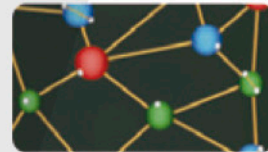
Right-angle design on shoulder, Anti-slip, enhance driving stability.



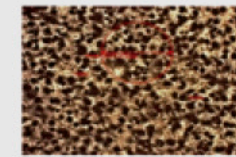
The wide pattern block design of the tread chamfering angle can effectively prevent the tire from sideslip on the ice and snow road; the pattern block widening design of the shoulder of the tire and staggered fan-shaped arrangement can make the tire have more effective traction and braking ability in normal driving and turning.



The 3D three-dimensional groove design with fine tread improves the grip and traction of the ice and snow ground, and improves the rigidity of the pattern block to provide excellent handling and driving performance of the ice and snow ground.



Low-temperature tread compound perform strong grip on snow and ice, improve braking performance, ensure safety in motion.



[Tread foaming technology] :

A sponge like structure with appropriate density and uniform size is formed in the tread area to absorb ice moisture.

[Design of widened driving surface] :

The driving surface is 5-20mm wider than that of summer tyres, enhancing driving force and braking force.



3D groove Normal groove

[3D groove design] :

The meshing effect between grooves is formed during driving, which reduces the relative movement between pattern blocks and increases the grounding area.

[Low hardness tread formula] :

normal temperature: 45-50ha, - 30 °C: about 50ha, keep the tread soft and ensure the grip.



■ Performance visualization



Size	PR	LI&SS	Standar	Max. Load	Max. Pressure	Overall	Section
			d Rim	kg	kPa	Diameter	Width
			inch			mm	mm
175		R 14 C 8D 99/98T	5.0	775/730	450	634	178
175		R 14 LT 8D 99/98T	5.0	775/730	450	634	178
175	/ 75	R 14 LT 8D 99/98T	5.0	775/750	475	618	177
185		R 14 LT 8D 102/100S	5.5	850/800	450	650	188
185		R 14 C 8D 102/100S	5.5	850/800	450	650	188
195	/ 70	R 15 LT 8D 99/96Q	6	775/710	450	655	201
195	/ 70	R 15 C 8D 104/102R	6.0	900/850	450	655	201
205	/ 70	R 15 C 8D 106/104S	6.0	950/900	450	669	209
205	/ 70	R 15 LT 8D 106/104S	6.0	950/900	450	669	209
LT 215	/ 70	R 15 6C 98/95T	6.5	750/690	350	683	221
LT 215	/ 75	R 15 6C 100/97T	6.0	800/730	350	703	216
LT 235	/ 75	R 15 6C 104/101T	6.5	900/825	350	733	235
215	/ 75	R 16 C 10E 116/114T	6.0	1150/1090	525	728	216



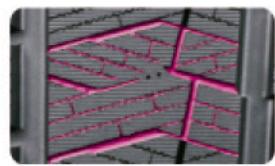
AW33

40/45/50/55/60/65/70

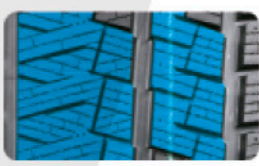


Winter tyre Ice/snow road Braking Handling

AW33 is a winter tire product specially designed for the ice and snow area, so that you can enjoy the driving pleasure on the ice and snow ground and the slippery road.



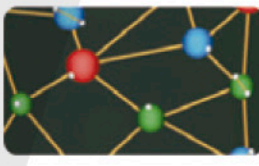
More crosswise and multiple pattern grooves cross, which can fully absorb water, avoid water film, and effectively form snow pillars to improve snow discharge performance.



Asymmetrical tread tires maintain rigidity on the outside and provide more ground area, improve the grip of dry wetland and ice surface sharp turning.



3D and ultra-thin groove design with fine tread improves the grip of ice and snow ground and ensures the handling and driving performance of ice and snow ground.



The low temperature resistant compound formula of tread has strong grip on snow and ice, and can ensure excellent handling performance.

Size	XL	LI&SS	Standard Rim	Max. Load	Max. Pressure	Overall Diameter	Section Width	Notes
155 / 65 R 13		73T	4.5	365	300	532	157	
165 / 70 R 13		79T	5.0	437	300	562	170	
165 / 60 R 14		75T	5.0	387	300	554	170	
165 / 70 R 14		81T	5.0	462	300	588	170	
175 / 65 R 14	XL	86T	5.0	530	340	584	177	
175 / 70 R 14	XL	88T	5.0	560	340	602	177	
185 / 60 R 14		82T	5.5	475	300	578	189	
185 / 65 R 14		86T	5.5	530	300	596	189	
185 / 70 R 14		88T	5.5	560	300	616	189	
185 / 60 R 15		84H	5.5	500	300	603	189	
185 / 65 R 15		88H	5.5	560	300	621	189	
195 / 55 R 15		85H	6.0	515	300	595	201	
195 / 60 R 15		88H	6.0	560	300	615	201	
195 / 65 R 15	XL	95T	6.0	690	300	635	201	
205 / 65 R 15		94H	6.0	670	300	647	209	
195 / 60 R 16		89T	6.0	580	300	640	201	
205 / 55 R 16		91H	6.5	615	300	632	214	
205 / 60 R 16	XL	96H	6.0	710	340	652	209	
225 / 55 R 16	XL	99H	7.0	775	340	654	233	
215 / 60 R 16	XL	99H	6.5	775	340	664	221	
215 / 65 R 16		98H	6.5	750	300	686	221	
215 / 70 R 16		100T	6.5	800	300	708	221	
225 / 60 R 16		98T	6.5	750	300	676	228	
225 / 70 R 16	XL	107T	6.5	975	340	722	228	
235 / 60 R 16		100T	7.0	800	300	688	240	
235 / 70 R 16		106T	7.0	950	300	736	240	
245 / 70 R 16		107T	7.0	975	300	750	248	
265 / 70 R 16		112T	8.0	1120	300	778	272	
205 / 45 R 17	XL	88H	7.0	560	340	616	206	
205 / 50 R 17	XL	93H	6.5	650	340	638	214	
215 / 50 R 17	XL	95H	7.0	690	340	648	226	
215 / 55 R 17		94H	7.0	670	300	668	226	
215 / 60 R 17		96H	6.5	710	300	690	221	
225 / 45 R 17	XL	94H	7.5	670	340	634	225	
225 / 50 R 17	XL	98H	7.0	750	340	658	233	
225 / 55 R 17	XL	101H	7.0	825	340	680	233	
225 / 60 R 17		99H	6.5	775	300	702	228	
225 / 65 R 17		102T	6.5	850	300	724	228	
235 / 50 R 17	XL	100H	7.5	800	340	668	245	
235 / 55 R 17	XL	103H	7.5	875	340	690	245	
235 / 65 R 17	XL	108T	7.0	1000	340	738	240	
245 / 65 R 17	XL	111H	7.0	1090	340	750	248	
265 / 65 R 17		112T	8.0	1120	300	776	272	
265 / 65 R 17	XL	116H	8.0	1250	340	776	272	
215 / 55 R 18		95H	7.0	690	300	693	226	
225 / 40 R 18	XL	92H	8.0	630	340	637	230	
225 / 50 R 18	XL	99H	7.0	775	340	683	233	
225 / 55 R 18		98H	7.0	750	300	705	233	
225 / 60 R 18	XL	104H	6.5	900	340	727	228	
235 / 50 R 18	XL	101H	7.5	825	340	693	245	
235 / 55 R 18		100H	7.5	800	300	715	245	
235 / 60 R 18	XL	107T	7.0	975	340	739	240	
245 / 40 R 18	XL	97H	8.5	730	340	653	248	
245 / 45 R 18	XL	100H	8.0	800	340	677	243	
255 / 55 R 18		105H	8.0	925	300	737	265	
265 / 35 R 18	XL	97V	9.5	730	340	643	271	
265 / 60 R 18	XL	114T	8.0	1180	340	775	272	
275 / 35 R 18	XL	99V	9.5	775	340	649	278	
285 / 60 R 18	XL	120H	8.5	1400	340	799	292	
225 / 45 R 19	XL	96H	7.5	710	340	685	225	
225 / 55 R 19		99H	7.0	775	300	731	233	
235 / 45 R 19	XL	99H	8.0	775	340	695	236	
235 / 50 R 19	XL	103H	7.5	875	340	719	245	
235 / 55 R 19	XL	105H	7.5	925	340	741	245	
245 / 45 R 19	XL	102H	8.0	850	340	703	243	
245 / 50 R 19	XL	105H	7.5	925	340	729	253	
245 / 55 R 19		103H	7.5	875	300	753	253	
255 / 45 R 19	XL	104H	8.5	900	340	713	255	
255 / 50 R 19	XL	107H	8.0	975	340	739	265	
255 / 55 R 19	XL	111H	8.0	1090	340	763	265	
265 / 50 R 19	XL	110H	8.5	1060	340	749	277	
245 / 40 R 20	XL	99H	8.5	775	340	704	248	
245 / 45 R 20	XL	103H	8.0	875	340	728	243	
255 / 50 R 20	XL	109H	8.0	1030	340	764	265	
265 / 50 R 20	XL	111H	8.5	1090	340	774	277	
275 / 40 R 20	XL	106H	9.5	950	340	728	278	
275 / 45 R 20	XL	110H	9.0	1060	340	756	273	
315 / 35 R 20	XL	110H	11.0	1060	340	728	320	
295 / 40 R 21	XL	111V	10.5	1090	340	769	301	
205 / 55 RF 16		91H	6.5	615	300	632	214	
205 / 45 RF 17	XL	88H	7.0	560	340	616	206	
205 / 50 RF 17	XL	93H	6.5	650	340	638	214	
225 / 45 RF 17	XL	94H	7.5	670	340	634	225	
225 / 50 RF 17	XL	98H	7.0	750	340	658	233	
225 / 55 RF 17	XL	101H	7.0	825	340	680	233	
225 / 40 RF 18	XL	92H	8.0	630	340	637	230	
225 / 50 RF 18	XL	99H	7.0	775	340	683	233	
235 / 50 RF 18	XL	101H	7.5	825	340	693	245	
245 / 40 RF 18	XL	97H	8.5	730	340	653	248	
245 / 45 RF 18	XL	100H	8.0	800	340	677	243	
255 / 55 RF 18		105H	8.0	925	300	737	265	
235 / 45 RF 19	XL	99H	8.0	775	340	695	236	
235 / 50 RF 19	XL	103H	7.5	875	340	719	245	
235 / 55 RF 19	XL	105H	7.5	925	340	741	245	
245 / 45 RF 19	XL	102H	8.0	850	340	703	243	
245 / 50 RF 19	XL	105H	7.5	925	340	729	253	
255 / 50 RF 19	XL	107H	8.0	975	340	739	265	
275 / 40 RF 20	XL	106H	9.5	950	340	728	278	
315 / 35 RF 20	XL	110H	11.0	1060	340	728	320	



RW506

40/45/50/55/60/65/70

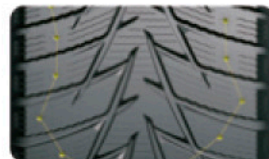
RW506 is designed especially for extremely cold weather. Studdable design can bring safe driving on ice road.



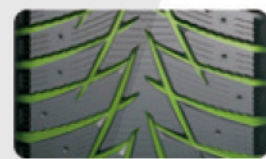
■ Performance visualization



Size					LI&SS	XL	Standard Rim	Max. Load	Max. Pressure	Overall Diameter	Section Width	Notes
							inch	kg	kPa	mm	mm	
175	/	70	R	13	82T		5.0	475	300	576	177	
175	/	65	R	14	86T	XL	5.0	530	340	584	177	
175	/	70	R	14	88T	XL	5.0	560	340	602	177	
185	/	65	R	14	90T	XL	5.5	600	340	596	189	
185	/	70	R	14	92T	XL	5.5	630	340	616	189	
185	/	60	R	15	88T	XL	5.5	560	340	603	189	
185	/	65	R	15	92T	XL	5.5	630	340	621	189	
195	/	60	R	15	92T	XL	6.0	630	340	615	201	
195	/	65	R	15	95T	XL	6.0	690	340	635	201	
205	/	65	R	15	99T	XL	6.0	775	340	647	209	
205	/	70	R	15	100T	XL	6.0	800	340	669	209	
205	/	55	R	16	94T	XL	6.5	670	340	632	214	
205	/	60	R	16	96T	XL	6.0	710	340	652	209	
215	/	60	R	16	99T	XL	6.5	775	340	664	221	
215	/	65	R	16	102T	XL	6.5	850	340	686	221	
225	/	60	R	16	102T	XL	6.5	850	340	676	228	
215	/	55	R	17	98H	XL	7.0	750	340	668	226	
225	/	45	R	17	94H	XL	7.5	670	340	634	225	
225	/	50	R	17	98H	XL	7.0	750	340	658	233	
225	/	55	R	17	101H	XL	7.0	825	340	680	233	
235	/	55	R	17	103T	XL	7.5	875	340	690	245	
225	/	40	R	18	92H	XL	8.0	630	340	637	230	
245	/	45	R	18	100H	XL	8.0	800	340	677	243	
215	/	70	R	16	100T		6.5	800	300	708	221	
235	/	70	R	16	106T		7.0	950	300	736	240	
245	/	70	R	16	111T	XL	7.0	1090	340	750	248	
265	/	70	R	16	112T		8.0	1120	300	778	272	
225	/	65	R	17	106T	XL	6.5	950	340	724	228	
235	/	65	R	17	108T	XL	7.0	1000	340	738	240	
245	/	65	R	17	111T	XL	7.0	1090	340	750	248	
265	/	65	R	17	112T		8.0	1120	300	776	272	
235	/	60	R	18	107T	XL	7.0	975	340	739	240	
255	/	55	R	18	109T	XL	8.0	1030	340	737	265	



Directivity studs configuration provides excellent grips and guidance, guaranteeing traction and braking



Directional design brings efficient drainage.



Special stud technique brings both grips and comfortable driving.



Detailed sipes enlarge the ground contact area, draining water fast and improving grips.



RW505

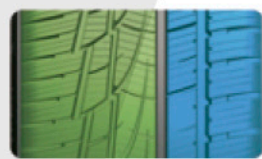
40/45/50/55



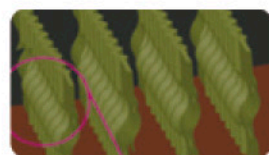
RW505 is high performance winter tyres. The asymmetrical design and excellent grips bring safe driving in winter condition.



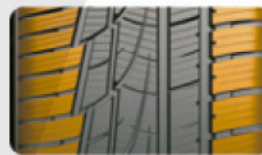
Continuous grooves from central to shoulder, bring excellent draining and safety.



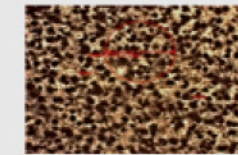
Asymmetrical design provide excellent grips, breaking and handling.



Detailed 3D sipes prevent sliding, improve breaking and handling in high speed condition.



Improved shoulder blocks bring excellent stability.



[Tread foaming technology] :

A sponge like structure with appropriate density and uniform size is formed in the tread area to absorb ice moisture.

[Design of widened driving surface] :

The driving surface is 5-20mm wider than that of summer tyres, enhancing driving force and braking force.



3D groove Normal groove

[3D groove design] :

The meshing effect between grooves is formed during driving, which reduces the relative movement between pattern blocks and increases the grounding area.

[Low hardness tread formula] :

Normal temperature: 45-50ha, - 30 °C: about 50ha, keep the tread soft and ensure the grip.



Winter tyre Ice/snow road Braking Handling



Size				LI&SS	XL	Standard Rim	Max. Load	Max. Pressure	Overall Diameter	Section Width	Notes	
						inch	kg	kPa	mm	mm		
195	/	55	R	16	87H		6.0	545	300	620	201	
205	/	55	R	16	91V		6.5	615	300	632	214	
215	/	55	R	16	97V	XL	7.0	730	340	642	226	
225	/	55	R	16	99V	XL	7.0	775	340	654	233	
205	/	45	R	17	88V	XL	7.0	560	340	616	206	
205	/	50	R	17	93V	XL	6.5	650	340	638	214	
215	/	45	R	17	91V	XL	7.0	615	340	626	213	
215	/	50	R	17	95V	XL	7.0	690	340	648	226	
215	/	55	R	17	98V	XL	7.0	750	340	668	226	
225	/	45	R	17	94V	XL	7.5	670	340	634	225	
225	/	50	R	17	98V	XL	7.0	750	340	658	233	
225	/	55	R	17	101V	XL	7.0	825	340	680	233	
235	/	45	R	17	97V	XL	8.0	730	340	644	236	
225	/	40	R	18	92V	XL	8.0	530	340	637	230	
255	/	55	R	18	109V	XL	8.0	1030	340	737	265	