

iLINK

PCR TIRE CATALOGUE

Tire Direct
La nueva generación



TIRE DIRECT



/TIRE_DIRECT



/TIREDIRECTMX



TIRE DIRECT

www.tiredirect.com.mx

ALWAYS WITH YOU



L-GRIP 16
HP 02



L-COMFORT 68
HP 04



L-GRIP 66
HP 06



L-GRIP 55
HP 10



IRONCLAD A/T
A/T 48



TERRAMAX LSR1 A/T
A/T 52



TERRAMAX LSR2 A/T
A/T 54



L-ZEAL 56
UHP 14



SPEEDKING 07
UHP 16



THUNDER U09
UHP 20



L-ZEAL 56
RFT 24



PENTERRA R/T
R/T 58



WILDWOLF M/T
M/T 60



TOPFORCE M/T
M/T 62

MADE IN CAMBODIA



MULTIMATCH A/S
A/S 26

MADE IN CAMBODIA



MULTIMILE A/S
A/S 30



X-MASTER EV
EV 32



SNOWGRIPPER I
WINTER 64



SNOWGRIPPER II
WINTER 68



WINTER IL868
WINTER 72



WINTER IL989
WINTER 76

M+S



SMARTTOURE I
VAN 34

M+S



L-MAX 9
VAN 36

M+S



L-POWER 28
VAN 38

M+S



TOURWAYS 52
VAN 40



WINTERVORHUT STUDD I
STUDD 78



WINTERVORHUT STUDD II
STUDD 80



WINTERVORHUT STUDD III
STUDD 84



POWERCITY 79
H/T 42



POWERCITY 77
H/T 44



L-FINDER 78
H/T 46

**CHOOSE
YOUR TIRES**
BASED ON YOUR VEHICLE

L-GRIP 16



HP

RANGE

12 - 15

ASPECT RATIO

60 - 80

SPEED SYMBOL

T - (H)

UTQG

420/A/A



SHARK FIN DESIGN



EQUALLY SPACED HORIZONTAL GROOVE DESIGN



REINFORCED TREAD COMBINED WITH AN OPTIMIZED DESIGN



ANTI-SLIP GROOVES

HP UHP A/S EV VAN H/T A/T R/T M/T WINTER STUDED

SIZE	L/SI	Rim	SW (mm)	OD (mm)	Load Index (kg)	Load Index (Lbs)	Max Pressure Kpa/Psi	UTQG	Sidewall	0	0	0
145/70R12	69T	4.50B	150	509	325	716	300/44	420/A/A	BSW	✓	✓	✓
155/65R13	73T	4.50B	157	532	365	805	300/44	420/A/A	BSW	✓	✓	✓
155/70R13	75T	4.50B	157	548	387	853	300/44	420/A/A	BSW	✓	✓	✓
155/80R13	79T	4.50B	157	578	437	963	300/44	420/A/A	BSW	✓	✓	✓
165/65R13	77T	5.00B	170	544	412	908	300/44	420/A/A	BSW	✓	✓	✓
165/70R13	79H	5.00B	170	562	437	963	300/44	420/A/A	BSW	✓	✓	✓
165/70R13	79T	5.00B	170	562	437	963	300/44	420/A/A	BSW	✓	✓	✓
165/80R13	83T	4.50B	165	594	487	1074	300/44	420/A/A	BSW	✓	✓	✓
175/60R13	77T	5.00B	177	540	412	908	300/44	420/A/A	BSW	✓	✓	✓
175/70R13	82T	5.00B	177	576	475	1047	300/44	420/A/A	BSW	✓	✓	✓
175/75R13	84T	5.00B	177	594	500	1102	300/44	420/A/A	BSW	✓	✓	✓
185/70R13	86T	5.50B	189	590	530	1168	300/44	420/A/A	BSW	✓	✓	✓
155/65R14	75T	4.1/2J	157	558	387	853	300/44	420/A/A	BSW	✓	✓	✓
165/60R14	75H	5J	170	554	387	853	300/44	420/A/A	BSW	✓	✓	✓
165/65R14	79T	5J	170	570	437	963	300/44	420/A/A	BSW	✓	✓	✓
165/65R14	79H	5J	170	570	437	963	300/44	420/A/A	BSW	✓	✓	✓
165/70R14	81T	5J	170	588	462	1019	300/44	420/A/A	BSW	✓	✓	✓
175/60R14	79H	5J	177	566	437	963	300/44	420/A/A	BSW	✓	✓	✓
175/65R14	82T	5J	177	584	475	1047	300/44	420/A/A	BSW	✓	✓	✓
175/65R14	86T	5J	177	584	530	1168	340/50	420/A/A	BSW	✓	✓	✓
175/70R14	88T	5J	177	602	560	1235	340/50	420/A/A	BSW	✓	✓	✓
175/70R14	84T	5J	177	602	500	1102	300/44	420/A/A	BSW	✓	✓	✓
175/75R14	86T	5J	177	618	530	1168	300/44	420/A/A	BSW	✓	✓	✓
185/60R14	82H	5.1/2J	189	578	475	1047	300/44	420/A/A	BSW	✓	✓	✓
185/65R14	86T	5.1/2J	189	596	530	1168	300/44	420/A/A	BSW	✓	✓	✓
185/70R14	88T	5.1/2J	189	616	560	1235	300/44	420/A/A	BSW	✓	✓	✓
195/60R14	86T	6J	201	590	530	1168	300/44	420/A/A	BSW	✓	✓	✓
195/70R14	91T	6J	201	630	615	1356	300/44	420/A/A	BSW	✓	✓	✓
205/60R14	88T	6J	209	602	560	1235	300/44	420/A/A	BSW	✓	✓	✓
205/70R14	98T	6J	209	644	750	1653	340/50	420/A/A	BSW	✓	✓	✓
205/70R15	96T	6J	209	669	710	1565	300/44	420/A/A	BSW	✓	✓	✓
205/70R15	100H	6J	209	669	800	1764	340/50	420/A/A	BSW	✓	✓	✓

L-COMFORT 68

HP UHP A/S EV VAN H/T A/T R/T M/T WINTER STUDED



HP

RANGE

12 - 17

ASPECT RATIO

50 - 70

SPEED SYMBOL

T - (W)

UTQG

380/A/A



STREAMLINED GROOVES



SHOULDER DESIGN



LOUVER DESIGN



ANTI-SLIP GROOVES

SIZE	L/SI	Rim	SW (mm)	OD (mm)	Load Index (kg)	Max Pressure (Lbs)	Max Pressure Kpa/Psi	UTQG	Sidewall	Icons
155/70R12	73T	4.5	157	523	365	805	300/44	380/A/A	BSW	✓ ✓ ✓
175/65R14	82H	5J	177	584	475	1047	300/44	380/A/A	BSW	✓ ✓ ✓
185/55R14	80H	6J	194	560	450	992	300/44	380/A/A	BSW	✓ ✓ ✓
185/60R14	82H	5 1/2J	189	578	475	1047	300/44	380/A/A	BSW	✓ ✓ ✓
185/65R14	86H	5 1/2J	189	596	530	1168	300/44	380/A/A	BSW	✓ ✓ ✓
215/70R14	96H	6 1/2J	221	658	710	1565	300/44	380/A/A	BSW	✓ ✓ ✓
175/60R15	81H	5J	177	591	462	1019	300/44	380/A/A	BSW	✓ ✓ ✓
175/65R15	84H	5J	177	609	500	1102	300/44	380/A/A	BSW	✓ ✓ ✓
185/55R15	82V	6J	194	585	475	1047	300/44	380/A/A	BSW	✓ ✓ ✓
185/60R15	88H	5 1/2J	189	603	560	1235	340/50	380/A/A	BSW	✓ ✓ ✓
185/60R15	84H	5 1/2J	189	603	500	1102	300/44	380/A/A	BSW	✓ ✓ ✓
185/65R15	88H	5 1/2J	189	621	560	1235	300/44	380/A/A	BSW	✓ ✓ ✓
195/50R15	82V	6J	201	577	475	1047	300/44	380/A/A	BSW	✓ ✓ ✓
195/55R15	85V	6J	201	595	515	1135	300/44	380/A/A	BSW	✓ ✓ ✓
195/60R15	86V	6J	201	615	560	1235	300/44	380/A/A	BSW	✓ ✓ ✓
195/60R15	88H	6J	201	615	560	1235	300/44	380/A/A	BSW	✓ ✓ ✓
195/65R15	91V	6J	201	635	615	1356	300/44	380/A/A	BSW	✓ ✓ ✓
195/65R15	95H	6J	201	635	690	1521	340/50	380/A/A	BSW	✓ ✓ ✓
195/65R15	91H	6J	201	635	615	1356	300/44	380/A/A	BSW	✓ ✓ ✓
205/60R15	91H	6J	209	627	615	1356	300/44	380/A/A	BSW	✓ ✓ ✓
205/60R15	91V	6J	209	627	615	1356	300/44	380/A/A	BSW	✓ ✓ ✓
205/65R15	94V	6J	209	647	670	1477	300/44	380/A/A	BSW	✓ ✓ ✓
205/65R15	94H	6J	209	647	670	1477	300/44	380/A/A	BSW	✓ ✓ ✓
215/65R15	100H	6 1/2J	221	661	900	1764	340/50	380/A/A	BSW	✓ ✓ ✓
215/70R15	98T	6 1/2J	221	683	750	1653	300/44	380/A/B	BSW	✓ ✓ ✓
235/70R15	103T	7J	240	711	875	1929	300/44	380/A/B	BSW	✓ ✓ ✓
185/50R16	81V	6J	194	592	462	1018	300/44	380/A/A	BSW	✓ ✓ ✓
185/55R16	83V	6J	194	610	487	1074	300/44	380/A/A	BSW	✓ ✓ ✓
195/55R16	87V	6J	201	620	548	1201	300/44	380/A/A	BSW	✓ ✓ ✓
195/55R16	91W	6J	201	620	615	1356	340/50	380/A/A	BSW	✓ ✓ ✓
195/60R16	89H	6J	201	640	580	1279	300/44	380/A/A	BSW	✓ ✓ ✓
205/55R16	91V	6 1/2J	214	632	615	1356	300/44	380/A/A	BSW	✓ ✓ ✓
205/60R16	92V	6J	209	652	630	1389	300/44	380/A/A	BSW	✓ ✓ ✓
205/65R16	95T	6J	209	672	690	1521	300/44	380/A/B	BSW	✓ ✓ ✓
215/60R16	95V	6 1/2J	221	664	690	1521	300/44	380/A/A	BSW	✓ ✓ ✓
215/60R16	99V	6 1/2J	221	664	775	1709	340/50	380/A/A	BSW	✓ ✓ ✓
215/65R16	98H	6 1/2J	221	686	750	1653	300/44	380/A/A	BSW	✓ ✓ ✓
225/60R16	98V	6 1/2J	228	676	750	1653	300/44	380/A/A	BSW	✓ ✓ ✓
225/65R16	100T	6 1/2J	228	698	800	1764	300/44	380/A/B	BSW	✓ ✓ ✓
235/60R16	100H	7J	240	688	800	1764	300/44	380/A/A	BSW	✓ ✓ ✓
235/65R16	103T	7J	240	712	875	1930	300/44	380/A/B	BSW	✓ ✓ ✓
215/60R17	96T	6 1/2J	221	690	710	1565	300/44	380/A/B	BSW	✓ ✓ ✓
215/65R17	99T	6 1/2J	221	712	775	1709	300/44	380/A/B	BSW	✓ ✓ ✓
225/60R17	99H	6 1/2J	228	702	775	1709	300/44	380/A/B	BSW	✓ ✓ ✓
225/65R17	102H	6 1/2J	228	724	850	1874	300/44	380/A/A	BSW	✓ ✓ ✓
235/65R17	104H	7J	240	738	900	1984	300/44	380/A/A	BSW	✓ ✓ ✓

L-GRIP 66

HP UHP A/S EV VAN H/T A/T R/T M/T WINTER STUDED



HP

RANGE

13 - 17

ASPECT RATIO

45 - 80

SPEED SYMBOL

T - (W)

UTQG

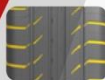
400/A/A



SILICONE COMPOUND



FOUR-RIB DESIGN



**BLADE-STYLE TREAD
BLOCK DESIGN**



**SHOULDER TREAD
BLOCK DESIGN**

SIZE	L/Sl	Rim	SW (mm)	OD (mm)	Load Index (kg)	Load Index (Lbs)	Max Pressure Kpa/Psi	UTQG	Sidewall	0	0	0
145/70R12	69T	450B	150	509	325	716	300/44	420/A/A	BSW	✓	✓	✓
145/80R12	74T	400B	145	537	375	827	300/44	420/A/A	BSW	✓	✓	✓
155/70R12	73T	450B	157	523	365	805	300/44	420/A/A	BSW	✓	✓	✓
165/70R12	77T	500B	170	537	412	908	300/44	420/A/A	BSW	✓	✓	✓
175/70R12	80T	500B	177	551	450	992	300/44	420/A/A	BSW	✓	✓	✓
145/70R13	71T	450B	150	534	345	761	300/44	420/A/A	BSW	✓	✓	✓
145/80R13	75T	400B	145	562	387	853	300/44	420/A/A	BSW	✓	✓	✓
155/65R13	73T	450B	157	532	365	805	300/44	420/A/A	BSW	✓	✓	✓
155/70R13	75T	450B	157	548	387	853	300/44	420/A/A	BSW	✓	✓	✓
155/80R13	79T	450B	157	578	437	963	300/44	420/A/A	BSW	✓	✓	✓
165/65R13	77T	500B	170	544	412	908	300/44	420/A/A	BSW	✓	✓	✓
165/80R13	83T	450B	165	594	487	1074	300/44	420/A/A	BSW	✓	✓	✓
165/70R13	79T	500B	170	562	437	963	300/44	420/A/A	BSW	✓	✓	✓
175/60R13	77T	500B	177	540	412	908	300/44	420/A/A	BSW	✓	✓	✓
175/65R13	80T	500B	177	558	450	992	300/44	420/A/A	BSW	✓	✓	✓
175/70R13	82T	500B	177	576	475	1047	300/44	420/A/A	BSW	✓	✓	✓
185/60R13	80H	550B	189	552	450	992	300/44	420/A/A	BSW	✓	✓	✓
185/70R13	86T	550B	189	590	530	1168	300/44	420/A/A	BSW	✓	✓	✓
155/60R14	72H	41/2J	157	542	355	783	300/44	420/A/A	BSW	✓	✓	✓
155/65R14	75T	41/2J	157	558	387	853	300/44	420/A/A	BSW	✓	✓	✓
155/70R14	77T	41/2J	157	574	412	908	300/44	420/A/A	BSW	✓	✓	✓
165/55R14	72V	5J	170	538	355	783	300/44	420/A/A	BSW	✓	✓	✓
165/60R14	75H	5J	170	554	387	853	300/44	420/A/A	BSW	✓	✓	✓
165/65R14	79T	5J	170	570	437	963	300/44	420/A/A	BSW	✓	✓	✓
165/70R14	81T	5J	170	588	462	1019	300/44	420/A/A	BSW	✓	✓	✓
175/60R14	79H	500B	177	566	437	963	300/44	420/A/A	BSW	✓	✓	✓
175/65R14	82T	5J	177	584	475	1047	300/44	420/A/A	BSW	✓	✓	✓
175/65R14	82H	5J	177	584	475	1047	300/44	420/A/A	BSW	✓	✓	✓
175/65R14	86T	5J	177	584	530	1168	340/50	420/A/A	BSW	✓	✓	✓
175/70R14	84T	5J	177	602	500	1102	300/44	420/A/A	BSW	✓	✓	✓
185/55R14	80H	6J	194	560	450	992	300/44	420/A/A	BSW	✓	✓	✓
185/60R14	82H	5 1/2J	189	578	475	1047	300/44	420/A/A	BSW	✓	✓	✓
185/65R14	86H	5 1/2J	189	596	530	1168	300/44	420/A/A	BSW	✓	✓	✓
185/70R14	88H	5 1/2J	189	616	560	1235	300/44	420/A/A	BSW	✓	✓	✓
195/60R14	86H	6J	201	590	530	1168	300/44	420/A/A	BSW	✓	✓	✓

SIZE	L/Sl	Rim	SW (mm)	OD (mm)	Load Index (kg)	(Lbs)	Max Pressure Kpa/Psi	UTQG	Sidewall	
195/65R14	89H	6 J	201	610	590	1278	300/44	420/A/A	BSW	✓ ✓ ✓
195/70R14	91H	6 J	201	630	615	1355	300/44	420/A/A	BSW	✓ ✓ ✓
205/60R14	88H	6 J	209	602	560	1234	300/44	420/A/A	BSW	✓ ✓ ✓
205/70R14	95H	6 J	209	644	690	1521	300/44	420/A/A	BSW	✓ ✓ ✓
215/70R14	96H	6 1/2J	221	658	710	1565	300/44	420/A/A	BSW	✓ ✓ ✓
145/65R15	72T	4 1/2J	150	569	355	783	300/44	420/A/A	BSW	✓ ✓ ✓
165/50R15	73V	5J	170	547	365	805	300/44	420/A/A	BSW	✓ ✓ ✓
165/55R15	75V	5J	170	563	387	853	300/44	420/A/A	BSW	✓ ✓ ✓
165/60R15	81H XL	5J	170	579	462	1019	340/50	420/A/A	BSW	✓ ✓ ✓
165/65R15	81T	5J	170	595	462	1019	300/44	420/A/A	BSW	✓ ✓ ✓
175/50R15	75H	5 1/2J	182	557	387	853	300/44	420/A/A	BSW	✓ ✓ ✓
175/55R15	77V	5 1/2J	182	573	412	908	300/44	420/A/A	BSW	✓ ✓ ✓
175/60R15	81H	5J	177	591	462	1019	300/44	420/A/A	BSW	✓ ✓ ✓
175/65R15	84H	5 J	177	609	500	1102	300/44	420/A/A	BSW	✓ ✓ ✓
185/55R15	82V	6 J	194	585	475	1047	300/44	420/A/A	BSW	✓ ✓ ✓
185/60R15	88H XL	5 1/2J	189	603	560	1235	340/50	420/A/A	BSW	✓ ✓ ✓
185/65R15	88H	5.5J	189	621	560	1235	300/44	420/A/A	BSW	✓ ✓ ✓
195/50R15	82V	6 J	201	577	475	1047	300/44	420/A/A	BSW	✓ ✓ ✓
195/55R15	85V	6 J	201	595	515	1135	300/44	420/A/A	BSW	✓ ✓ ✓
195/60R15	88V	6 J	201	615	560	1235	300/44	420/A/A	BSW	✓ ✓ ✓
195/60R15	88H	6 J	201	615	560	1235	300/44	420/A/A	BSW	✓ ✓ ✓
195/65R15	91H	6 J	201	635	615	1356	300/44	420/A/A	BSW	✓ ✓ ✓
195/65R15	91V	6 J	201	635	615	1356	300/44	420/A/A	BSW	✓ ✓ ✓
205/50R15	86V	6 1/2J	214	587	530	1168	300/44	420/A/A	BSW	✓ ✓ ✓
205/55R15	88V	6 1/2J	214	607	560	1235	300/44	420/A/A	BSW	✓ ✓ ✓
205/60R15	91V	6 J	209	627	615	1355	300/44	420/A/A	BSW	✓ ✓ ✓
205/65R15	94V	6 J	209	647	670	1477	300/44	420/A/A	BSW	✓ ✓ ✓
205/65R15	94H	6 J	209	647	670	1477	300/44	420/A/A	BSW	✓ ✓ ✓
205/70R15	96H	6 J	209	669	710	1565	300/44	420/A/A	BSW	✓ ✓ ✓
205/75R15	97T	5 1/2J	203	689	730	1609	300/44	420/A/A	BSW	✓ ✓ ✓
215/60R15	94H	6 1/2J	221	639	670	1477	300/44	420/A/A	BSW	✓ ✓ ✓
215/65R15	96H	6 1/2J	221	661	710	1565	300/44	420/A/A	BSW	✓ ✓ ✓
215/70R15	98H	6 1/2J	221	683	750	1653	300/44	420/A/A	BSW	✓ ✓ ✓
225/60R15	96V	6 1/2J	228	651	710	1565	300/44	420/A/A	BSW	✓ ✓ ✓
225/70R15	100H	6 1/2J	228	697	800	1764	300/44	420/A/A	BSW	✓ ✓ ✓

SIZE	L/Sl	Rim	SW (mm)	OD (mm)	Load Index (kg)	(Lbs)	Max Pressure Kpa/Psi	UTQG	Sidewall	
175/50R16	77V	5 1/2J	182	582	412	908	300/44	420/A/A	BSW	✓ ✓ ✓
185/50R16	81V	6J	194	592	462	1019	300/44	420/A/A	BSW	✓ ✓ ✓
185/55R16	83V	6J	194	610	487	1074	300/44	420/A/A	BSW	✓ ✓ ✓
185/60R16	86H	5 1/2J	189	628	530	1168	300/44	420/A/A	BSW	✓ ✓ ✓
195/50R16	84V	6J	201	602	500	1102	300/44	420/A/A	BSW	✓ ✓ ✓
195/55R16	87V	6J	201	620	545	1201	300/44	420/A/A	BSW	✓ ✓ ✓
195/60R16	89H	6J	201	640	580	1278	300/44	420/A/A	BSW	✓ ✓ ✓
205/55R16	91V	6.5J	214	632	615	1356	300/44	420/A/A	BSW	✓ ✓ ✓
205/60R16	92V	6 J	209	652	630	1389	300/44	420/A/A	BSW	✓ ✓ ✓
205/65R16	95H	6 J	209	672	690	1521	300/44	420/A/A	BSW	✓ ✓ ✓
205/80R16	104SXL	5 1/2J	203	734	900	1984	340/50	420/A/A	BSW	✓ ✓ ✓
215/55R16	93V	7 J	226	642	650	1432	300/44	420/A/A	BSW	✓ ✓ ✓
215/60R16	99H XL	6 1/2J	221	664	775	1709	340/50	420/A/A	BSW	✓ ✓ ✓
215/65R16	98H	6 1/2J	221	686	750	1653	300/44	420/A/A	BSW	✓ ✓ ✓
225/55R16	95V	7 J	233	654	690	1521	300/44	420/A/A	BSW	✓ ✓ ✓
225/60R16	98H	6.5J	228	676	750	1653	300/44	420/A/A	BSW	✓ ✓ ✓
225/60R16	98V	6.5J	228	676	750	1653	300/44	420/A/A	BSW	✓ ✓ ✓
225/65R16	100T	6 1/2J	228	698	800	1764	300/44	420/A/A	BSW	✓ ✓ ✓
235/60R16	100H	7 J	240	688	800	1763	300/44	420/A/A	BSW	✓ ✓ ✓
235/65R16	103T	7J	240	712	875	1929	300/44	420/A/A	BSW	✓ ✓ ✓
215/55R17	94V	7J	226	668	670	1477	300/44	420/A/A	BSW	✓ ✓ ✓
215/60R17	96T	6 1/2J	221	690	710	1565	300/44	420/A/A	BSW	✓ ✓ ✓
215/65R17	99T	6 1/2J	221	712	775	1709	300/44	420/A/A	BSW	✓ ✓ ✓
225/55R17	101H	7 J	233	680	825	1818	340/50	420/A/A	BSW	✓ ✓ ✓
225/60R17	99H	6 1/2J	228	702	775	1708	300/44	420/A/A	BSW	✓ ✓ ✓
225/65R17	102H	6 1/2J	228	724	850	1873	300/44	420/A/A	BSW	✓ ✓ ✓
235/65R17	104H	7J	240	738	900	1984	300/44	420/A/A	BSW	✓ ✓ ✓

L-GRIP 55



HP

RANGE

13 - 17

ASPECT RATIO

45 - 80

SPEED SYMBOL

T - (W)

UTQG

400/A/A



**ASYMMETRICAL PAT-
TERN DESIGN**



**WIDE LONGITUDINAL
GROOVE DESIGN**



**SPECIAL HOOK
GROOVE DESIGN ON
OUTER SHOULDER**

HP UHP A/S EV VAN H/T A/T R/T M/T WINTER STUDED

SIZE	L/SI	Rim	SW (mm)	OD (mm)	Load Index (kg)	Max Pressure (Lbs)	Max Pressure Kpa/Psi	UTQG	Sidewall	0	0	0	0
145/70R12	69T	4.50B	150	509	325	716	300/44	400/A/A	BSW	✓	✓	✓	✓
145/80R12	74T	4.00B	145	537	375	827	300/44	400/A/A	BSW	✓	✓	✓	✓
155/70R12	73T	4.50B	157	523	365	805	300/44	400/A/A	BSW	✓	✓	✓	✓
165/70R12	77T	5.00B	170	537	412	908	300/44	400/A/A	BSW	✓	✓	✓	✓
175/70R12	80T	5.00B	177	551	450	992	300/44	400/A/A	BSW	✓	✓	✓	✓
145/80R13	75T	4.00B	145	562	387	853	300/44	400/A/A	BSW	✓	✓	✓	✓
155/65R13	73T	4.50B	157	532	365	805	300/44	400/A/A	BSW	✓	✓	✓	✓
155/70R13	75T	4.50B	157	548	387	853	300/44	400/A/A	BSW	✓	✓	✓	✓
155/80R13	79T	4.50B	157	578	437	963	300/44	400/A/A	BSW	✓	✓	✓	✓
165/65R13	77T	5.00B	170	544	412	908	300/44	400/A/A	BSW	✓	✓	✓	✓
165/70R13	79T	5.00B	170	562	437	963	300/44	400/A/A	BSW	✓	✓	✓	✓
165/80R13	83T	4.50B	165	594	487	1074	300/44	400/A/A	BSW	✓	✓	✓	✓
175/60R13	77T	5.00B	177	540	412	908	300/44	400/A/A	BSW	✓	✓	✓	✓
175/70R13	82T	5.00B	177	576	475	1047	300/44	400/A/A	BSW	✓	✓	✓	✓
185/60R13	80H	5.50B	189	552	450	992	300/44	400/A/A	BSW	✓	✓	✓	✓
185/70R13	86T	5.50B	189	590	530	1168	300/44	400/A/A	BSW	✓	✓	✓	✓
155/65R14	75T	4.50B	157	558	387	853	300/44	400/A/A	BSW	✓	✓	✓	✓
155/70R14	77T	4 1/2J	157	574	412	908	300/44	400/A/A	BSW	✓	✓	✓	✓
165/55R14	72V	5J	170	538	355	783	300/44	400/A/A	BSW	✓	✓	✓	✓
165/60R14	75H	5.00B	170	554	387	853	300/44	400/A/A	BSW	✓	✓	✓	✓
165/65R14	79T	5J	170	570	437	963	300/44	400/A/A	BSW	✓	✓	✓	✓
165/70R14	85T XL	5.00B	170	588	515	1135	340/50	400/A/A	BSW	✓	✓	✓	✓
165/70R14	81T	5.00B	170	588	462	1019	300/44	400/A/A	BSW	✓	✓	✓	✓
175/60R14	79H	5.00B	177	566	437	963	300/44	400/A/A	BSW	✓	✓	✓	✓
175/65R14	86T XL	5.00B	177	584	530	1168	340/50	400/A/A	BSW	✓	✓	✓	✓
175/65R14	82H	5.00B	177	584	475	1047	300/44	400/A/A	BSW	✓	✓	✓	✓
175/70R14	88T XL	5.00B	177	602	560	1235	340/50	400/A/A	BSW	✓	✓	✓	✓
175/70R14	84T	5.00B	177	602	500	1102	300/44	400/A/A	BSW	✓	✓	✓	✓
185/50R14	77V	6J	194	542	412	908	300/44	400/A/A	BSW	✓	✓	✓	✓
185/55R14	80H	6J	194	560	450	992	300/44	400/A/A	BSW	✓	✓	✓	✓
185/60R14	82H	5 1/2J	189	578	475	1047	300/44	400/A/A	BSW	✓	✓	✓	✓
185/65R14	86H	5 1/2J	189	596	530	1168	300/44	400/A/A	BSW	✓	✓	✓	✓
185/70R14	88T	5 1/2J	189	616	560	1235	300/44	400/A/A	BSW	✓	✓	✓	✓
195/60R14	86H	6J	201	590	530	1168	300/44	400/A/A	BSW	✓	✓	✓	✓
195/65R14	89H	6J	201	610	580	1279	300/44	400/A/A	BSW	✓	✓	✓	✓

SIZE	L/Sl	Rim	SW (mm)	OD (mm)	Load Index (kg)	Load Index (Lbs)	Max Pressure Kpa/Psi	UTQG	Sidewall	
195/70R14	91H	6J	201	630	615	1356	300/44	400/A/A	BSW	✓ ✓ ✓
205/60R14	88H	6J	209	602	560	1235	300/44	400/A/A	BSW	✓ ✓ ✓
205/70R14	95H	6J	209	644	690	1521	300/44	400/A/A	BSW	✓ ✓ ✓
215/70R14	96H	6 1/2J	221	658	710	1565	300/44	400/A/A	BSW	✓ ✓ ✓
155/60R15	74T	4.50B	157	567	375	827	300/44	400/A/A	BSW	✓ ✓ ✓
165/50R15	73V	5J	170	547	365	805	300/44	400/A/A	BSW	✓ ✓ ✓
165/55R15	75V	5J	170	563	387	853	300/44	400/A/A	BSW	✓ ✓ ✓
165/60R15	81H XL	5.00B	170	579	462	1019	340/50	400/A/A	BSW	✓ ✓ ✓
165/65R15	81H	5J	170	595	462	1019	300/44	400/A/A	BSW	✓ ✓ ✓
175/50R15	75H	5 1/2J	182	557	387	853	300/44	400/A/A	BSW	✓ ✓ ✓
175/55R15	77H	5 1/2J	182	573	412	908	300/44	400/A/A	BSW	✓ ✓ ✓
175/60R15	81H	5J	177	591	462	1019	300/44	400/A/A	BSW	✓ ✓ ✓
175/65R15	84H	5J	177	609	500	1102	300/44	400/A/A	BSW	✓ ✓ ✓
185/55R15	82V	6J	194	585	475	1047	300/44	400/A/A	BSW	✓ ✓ ✓
185/60R15	88H XL	5 1/2J	189	603	560	1235	340/50	400/A/A	BSW	✓ ✓ ✓
185/60R15	84H	5 1/2J	189	603	500	1102	300/44	400/A/A	BSW	✓ ✓ ✓
185/65R15	88H	5 1/2J	189	621	560	1235	300/44	400/A/A	BSW	✓ ✓ ✓
195/45R15	82V XL	6 1/2J	195	557	475	1047	340/50	400/A/A	BSW	✓ ✓ ✓
195/50R15	82V	6J	201	577	475	1047	300/44	400/A/A	BSW	✓ ✓ ✓
195/55R15	85V	6J	201	595	515	1135	300/44	400/A/A	BSW	✓ ✓ ✓
195/60R15	88V	6J	201	615	560	1235	300/44	400/A/A	BSW	✓ ✓ ✓
195/60R15	88H	6J	201	615	560	1235	300/44	400/A/A	BSW	✓ ✓ ✓
195/65R15	95TXL	6J	201	635	690	1521	340/50	400/A/A	BSW	✓ ✓ ✓
195/65R15	91V	6J	201	635	615	1356	300/44	400/A/A	BSW	✓ ✓ ✓
205/50R15	86V	6 1/2J	214	587	530	1168	300/44	400/A/A	BSW	✓ ✓ ✓
205/55R15	88V	6 1/2J	214	607	560	1235	300/44	400/A/A	BSW	✓ ✓ ✓
205/60R15	91V	6J	209	627	615	1356	300/44	400/A/A	BSW	✓ ✓ ✓
205/65R15	94V	6J	209	647	670	1477	300/44	400/A/A	BSW	✓ ✓ ✓
205/70R15	96H	6J	209	669	710	1565	300/44	400/A/A	BSW	✓ ✓ ✓
215/65R15	96H	6 1/2J	221	661	710	1565	300/44	400/A/A	BSW	✓ ✓ ✓
215/70R15	98H	6 1/2J	221	683	750	1653	300/44	400/A/A	BSW	✓ ✓ ✓
225/60R15	96V	6 1/2J	228	651	710	1565	300/44	400/A/A	BSW	✓ ✓ ✓
225/70R15	100H	6 1/2J	228	697	800	1764	300/44	400/A/A	BSW	✓ ✓ ✓
175/50R16	77V	5 1/2J	182	582	412	908	300/44	400/A/A	BSW	✓ ✓ ✓
185/50R16	81V	6J	194	592	462	1019	300/44	400/A/A	BSW	✓ ✓ ✓

SIZE	L/Sl	Rim	SW (mm)	OD (mm)	Load Index (kg)	Load Index (Lbs)	Max Pressure Kpa/Psi	UTQG	Sidewall	
185/55R16	87V XL	6J	194	610	545	1202	340/50	400/A/A	BSW	✓ ✓ ✓
185/60R16	86H	5 1/2J	189	628	530	1168	300/44	400/A/A	BSW	✓ ✓ ✓
195/50R16	88V XL	6J	201	602	560	1235	340/50	400/A/A	BSW	✓ ✓ ✓
195/55R16	91V XL	6J	201	620	615	1356	340/50	400/A/A	BSW	✓ ✓ ✓
195/60R16	89H	6J	201	640	580	1279	300/44	400/A/A	BSW	✓ ✓ ✓
205/50R16	91W XL	6 1/2J	214	612	615	1356	340/50	400/A/A	BSW	✓ ✓ ✓
205/55R16	94W XL	6 1/2J	214	632	670	1477	340/50	400/A/A	BSW	✓ ✓ ✓
205/65R16	91V	6 1/2J	214	632	615	1356	300/44	400/A/A	BSW	✓ ✓ ✓
205/60R16	96V XL	6J	209	652	710	1565	340/50	400/A/A	BSW	✓ ✓ ✓
205/60R16	92V	6J	209	652	630	1389	300/44	400/A/A	BSW	✓ ✓ ✓
205/65R16	95H	6J	209	672	690	1521	300/44	400/A/A	BSW	✓ ✓ ✓
215/55R16	97W XL	7J	226	642	730	1609	340/50	400/A/A	BSW	✓ ✓ ✓
215/60R16	99H XL	6 1/2J	221	664	775	1709	340/50	400/A/A	BSW	✓ ✓ ✓
215/60R16	95V	6 1/2J	221	664	690	1521	300/44	400/A/A	BSW	✓ ✓ ✓
215/65R16	98H	6 1/2J	221	686	750	1653	300/44	400/A/A	BSW	✓ ✓ ✓
225/55R16	99W XL	7J	233	654	775	1709	340/50	400/A/A	BSW	✓ ✓ ✓
225/60R16	102V XL	6 1/2J	228	676	850	1874	340/50	400/A/A	BSW	✓ ✓ ✓
225/65R16	100T	6 1/2J	228	698	800	1764	300/44	400/A/A	BSW	✓ ✓ ✓
235/60R16	100H	7J	240	688	800	1764	300/44	400/A/A	BSW	✓ ✓ ✓
235/65R16	103T	7J	240	712	875	1929	300/44	400/A/A	BSW	✓ ✓ ✓
215/60R17	96T	6 1/2J	221	690	710	1565	300/44	400/A/A	BSW	✓ ✓ ✓
215/65R17	99T	6 1/2J	221	712	775	1709	300/44	400/A/A	BSW	✓ ✓ ✓
225/60R17	99H	6 1/2J	228	702	775	1709	300/44	400/A/A	BSW	✓ ✓ ✓
225/65R17	102H	6 1/2J	228	724	850	1874	300/44	400/A/A	BSW	✓ ✓ ✓
235/65R17	104H	7J	240	738	900	1984	300/44	400/A/A	BSW	✓ ✓ ✓

L-ZEAL 56

HP **UHP** A/S EV VAN H/T A/T R/T M/T WINTER STUDED

DRY GRIP	(10/10)
WET GRIP	(9/10)
SILENT PERFORMANCE	(9/10)
ECO-FRIENDLY	(9/10)
TREADWEAR	(8/10)

UHP

RANGE
15 - 24

ASPECT RATIO
30 - 55

SPEED SYMBOL
V - (W)

UTQG
300/A/A



ASYMMETRIC TREAD PATTERN



OUTER SHOULDER TREAD BLOCK DESIGN



OPTIMIZED LONGITUDINAL RIB DESIGN



LONGITUDINAL RIB DESIGN

SIZE	L/Sl	Rim	SW (mm)	OD (mm)	Load Index (kg)	Load Index (Lbs)	Max Pressure Kpa/Psi	UTQG	Sidewall	Icons
195/45R15	82V XL	6 1/2J	195	557	475	1047	340/50	300/A/A	BSW	✓ ✓ ✓
195/45R16	84W	6 1/2J	195	582	500	1102	340/50	300/A/A	BSW	✓ ✓ ✓
195/50R16	84V	6J	201	602	500	1102	300/44	300/A/A	BSW	✓ ✓ ✓
205/45R16	87W	7J	206	590	545	1201	340/50	300/A/A	BSW	✓ ✓ ✓
205/50R16	91W	6 1/2J	214	612	615	1356	340/50	300/A/A	BSW	✓ ✓ ✓
205/55R16	91W	6 1/2J	214	632	615	1356	300/44	300/A/A	BSW	✓ ✓ ✓
205/55R16	94W	6 1/2J	214	632	670	1477	340/50	300/A/A	BSW	✓ ✓ ✓
215/55R16	97W	7J	226	642	730	1609	340/50	300/A/A	BSW	✓ ✓ ✓
225/55R16	99W	7 1/2J	233	654	775	1709	340/50	300/A/A	BSW	✓ ✓ ✓
195/40R17	81W	7J	200	588	462	1019	340/50	300/A/A	BSW	✓ ✓ ✓
205/40R17	84W	7 1/2J	212	596	500	1102	340/50	300/A/A	BSW	✓ ✓ ✓
205/45R17	88W	7J	206	616	560	1235	340/50	300/A/A	BSW	✓ ✓ ✓
205/50R17	93W	6 1/2J	214	638	650	1433	340/50	300/A/A	BSW	✓ ✓ ✓
205/55ZR17	95W XL	6 1/2J	214	658	690	1521	340/50	300/A/A	BSW	✓ ✓ ✓
215/40R17	87W	7 1/2J	218	604	545	1202	340/50	300/A/A	BSW	✓ ✓ ✓
215/45R17	91W	7 1/2J	213	626	615	1356	340/50	300/A/A	BSW	✓ ✓ ✓
215/50R17	95W	7 1/2J	226	648	690	1521	340/50	300/A/A	BSW	✓ ✓ ✓
215/55R17	94W	7 1/2J	226	668	670	1477	300/44	300/A/A	BSW	✓ ✓ ✓
225/45R17	94W	7 1/2J	225	634	670	1477	340/50	300/A/A	BSW	✓ ✓ ✓
225/50R17	98W	7J	233	658	750	1653	340/50	300/A/A	BSW	✓ ✓ ✓
225/55R17	97V	7J	233	680	730	1609	300/44	300/A/A	BSW	✓ ✓ ✓
225/55R17	101W	7J	233	680	825	1819	340/50	300/A/A	BSW	✓ ✓ ✓
235/45R17	97W	8 1/2J	236	644	730	1609	340/50	300/A/A	BSW	✓ ✓ ✓
235/50R17	100W XL	7 1/2J	245	668	800	1764	340/50	300/A/A	BSW	✓ ✓ ✓
235/55R17	99V	7 1/2J	245	690	775	1709	300/44	300/A/A	BSW	✓ ✓ ✓
235/55R17	103W	7 1/2J	245	690	875	1929	340/50	300/A/A	BSW	✓ ✓ ✓
245/40R17	95W XL	8 1/2J	248	628	690	1521	340/50	300/A/A	BSW	✓ ✓ ✓
245/45R17	99W XL	8 1/2J	243	652	775	1709	340/50	300/A/A	BSW	✓ ✓ ✓
215/35R18	84W	7 1/2J	218	607	500	1102	340/50	300/A/A	BSW	✓ ✓ ✓
215/40R18	89W	7 1/2J	218	629	580	1279	340/50	300/A/A	BSW	✓ ✓ ✓
215/45R18	93W	7J	213	651	650	1433	340/50	300/A/A	BSW	✓ ✓ ✓
215/50ZR18	92W	7J	226	673	630	1389	300/44	300/A/A	BSW	✓ ✓ ✓
215/55R18	99W	7J	226	693	775	1709	340/50	300/A/A	BSW	✓ ✓ ✓
225/40R18	92W	8 1/2J	230	637	630	1389	340/50	300/A/A	BSW	✓ ✓ ✓
225/45R18	95W	7 1/2J	225	659	690	1521	340/50	300/A/A	BSW	✓ ✓ ✓
225/50ZR18	99W XL	7J	233	683	775	1709	340/50	300/A/A	BSW	✓ ✓ ✓
225/55R18	102W XL	7 1/2J	233	705	850	1874	340/50	300/A/A	BSW	✓ ✓ ✓
235/40R18	95W	8 1/2J	241	645	690	1521	340/50	300/A/A	BSW	✓ ✓ ✓
235/45R18	98W XL	8 1/2J	236	669	750	1653	340/50	300/A/A	BSW	✓ ✓ ✓
235/50R18	97V	7 1/2J	245	693	730	1609	300/44	300/A/A	BSW	✓ ✓ ✓
235/55R18	104V	7 1/2J	245	715	900	1984	340/50	300/A/A	BSW	✓ ✓ ✓
245/40R18	97W	8 1/2J	248	653	730	1609	340/50	300/A/A	BSW	✓ ✓ ✓
245/45R18	100W	8 1/2J	243	677	800	1764	340/50	300/A/A	BSW	✓ ✓ ✓
245/50R18	100V	7 1/2J	253	703	800	1764	300/44	300/A/A	BSW	✓ ✓ ✓
255/35ZR18	94W	9 1/2J	260	635	670	1477	340/50	300/A/A	BSW	✓ ✓ ✓
255/40ZR18	99W XL	9 1/2J	260	661	775	1709	340/50	300/A/A	BSW	✓ ✓ ✓

ALWAYS WITH YOU

Tire Direct
La nueva generación

* NEW DEVELOPING SIZES / THE LABELING INFORMATION ARE SUBJECT TO CHANGE WITHOUT NOTICE

SIZE	L/SI	Rim	SW (mm)	OD (mm)	Load Index (kg)	Max Pressure (Kpa/Psi)	UTQG	Sidewall		
255/45R18	99W	8 1/2J	255	687	775	1709	300/44	300/A/A	BSW	✓ ✓ ✓
255/50R18	106V XL	8J	265	713	950	2094	340/50	300/A/A	BSW	✓ ✓ ✓
255/55R18	105V	8 J	265	737	925	2039	300/44	300/A/A	BSW	✓ ✓ ✓
265/35ZR18	97W	9 1/2J	271	643	730	1609	340/50	300/A/A	BSW	✓ ✓ ✓
265/40ZR18	101W XL	9 1/2J	271	669	825	1819	340/50	300/A/A	BSW	✓ ✓ ✓
275/40ZR18	103W XL	9 1/2J	278	677	875	1929	340/50	300/A/A	BSW	✓ ✓ ✓
275/35ZR18	101W	10 J	290	657	825	1819	340/50	300/A/A	BSW	✓ ✓ ✓
205/55R19	97V XL	6 1/2J	214	709	730	1609	340/50	300/A/A	BSW	✓ ✓ ✓
225/35R19	84W	8J	230	641	500	1102	300/44	300/A/A	BSW	✓ ✓ ✓
225/40ZR19	93W XL	8J	230	663	650	1433	340/50	300/A/A	BSW	✓ ✓ ✓
225/55R19	99V	7 J	233	731	775	1709	300/44	300/A/A	BSW	✓ ✓ ✓
235/35R19	91W	8 1/2J	241	647	615	1356	340/50	300/A/A	BSW	✓ ✓ ✓
235/45R19	95W	8J	236	695	690	1521	300/44	300/A/A	BSW	✓ ✓ ✓
235/50R19	103V	7 1/2J	245	719	875	1929	340/50	300/A/A	BSW	✓ ✓ ✓
235/55R19	105V	7 1/2J	245	741	925	2039	340/50	300/A/A	BSW	✓ ✓ ✓
245/35R19	93W	8 1/2J	248	655	650	1433	340/50	300/A/A	BSW	✓ ✓ ✓
245/40ZR19	98W XL	8 1/2J	248	679	750	1653	340/50	300/A/A	BSW	✓ ✓ ✓
245/45R19	98W	8J	243	703	750	1653	300/44	300/A/A	BSW	✓ ✓ ✓
245/55R19	103V	7 1/2J	253	753	875	1929	300/44	300/A/A	BSW	✓ ✓ ✓
255/35R19	96W	9J	260	661	710	1565	340/50	300/A/A	BSW	✓ ✓ ✓
255/45R19	100W	8 1/2J	255	713	800	1764	300/44	300/A/A	BSW	✓ ✓ ✓
255/50R19	103V	8J	265	739	875	1929	300/44	300/A/A	BSW	✓ ✓ ✓
255/55R19	111V XL	8J	265	763	1090	2403	340/50	300/A/A	BSW	✓ ✓ ✓
265/30ZR19	93W	9 1/2J	271	643	650	1433	340/50	300/A/A	BSW	✓ ✓ ✓
265/50R19	110V XL	8 1/2J	277	749	1060	2337	340/50	300/A/A	BSW	✓ ✓ ✓
275/30ZR19	96W	9 1/2J	278	649	710	1565	340/50	300/A/A	BSW	✓ ✓ ✓
275/35ZR19	100W XL	9 1/2J	278	675	800	1764	340/50	300/A/A	BSW	✓ ✓ ✓
275/40ZR19	105W XL	9 1/2J	278	703	925	2039	340/50	300/A/A	BSW	✓ ✓ ✓
275/45R19	108V XL	9J	273	731	1000	2205	340/50	300/A/A	BSW	✓ ✓ ✓
285/45R19	107V	9 1/2J	285	739	975	2149	300/44	300/A/A	BSW	✓ ✓ ✓
245/50R19	105V XL	7 1/2J	253	729	925	2039	340/50	300/A/A	BSW	✓ ✓ ✓
275/55R19	111V	8 1/2J	284	785	1090	2403	300/44	300/A/A	BSW	✓ ✓ ✓
195/55R20	91V	6J	201	722	615	1356	300/44	300/A/A	BSW	✓ ✓ ✓
225/30ZR20	85W	8 J	230	644	515	1135	340/50	300/A/A	BSW	✓ ✓ ✓
225/35R20	90W	8J	230	666	600	1323	340/50	300/A/A	BSW	✓ ✓ ✓
235/30ZR20	88W XL	8 1/2J	241	650	560	1235	340/50	300/A/A	BSW	✓ ✓ ✓
235/35R20	92W	8 1/2J	241	672	630	1389	340/50	300/A/A	BSW	✓ ✓ ✓
235/55ZR20	105W XL	7 1/2J	245	766	925	2039	340/50	300/A/A	BSW	✓ ✓ ✓
245/30ZR20	95W XL	8 1/2J	248	656	690	1521	340/50	300/A/A	BSW	✓ ✓ ✓
245/35R20	95W	8 1/2J	248	680	690	1521	340/50	300/A/A	BSW	✓ ✓ ✓
245/40ZR20	99W	8 1/2J	248	704	775	1709	340/50	300/A/A	BSW	✓ ✓ ✓
245/45ZR20	103W XL	8J	243	728	875	1929	340/50	300/A/A	BSW	✓ ✓ ✓
245/50ZR20	105W XL	7 1/2J	253	754	925	2039	340/50	300/A/A	BSW	✓ ✓ ✓
255/30ZR20	92Y XL	9J	260	662	630	1389	340/50	300/A/A	BSW	✓ ✓ ✓
255/35R20	97W	9J	260	686	730	1609	340/50	300/A/A	BSW	✓ ✓ ✓
255/45ZR20	105W XL	8 1/2J	255	738	925	2039	340/50	300/A/A	BSW	✓ ✓ ✓

SIZE	L/SI	Rim	SW (mm)	OD (mm)	Load Index (kg)	Max Pressure (Kpa/Psi)	UTQG	Sidewall		
255/50R20	109V XL	8J	265	764	1030	2271	340/50	300/A/A	BSW	✓ ✓ ✓
265/45ZR20	108W XL	9J	266	746	1000	2205	340/50	300/A/A	BSW	✓ ✓ ✓
265/50R20	111V XL	8 1/2J	277	774	1090	2403	340/50	300/A/A	BSW	✓ ✓ ✓
275/30R20	97V XL	9 1/2J	278	674	730	1609	340/50	300/A/A	BSW	✓ ✓ ✓
275/35ZR20	102W	9 1/2J	278	700	850	1874	340/50	300/A/A	BSW	✓ ✓ ✓
275/40ZR20	106W XL	9 1/2J	278	728	950	2094	340/50	300/A/A	BSW	✓ ✓ ✓
275/45R20	110V XL	9J	273	756	1060	2337	340/50	300/A/A	BSW	✓ ✓ ✓
275/50R20	113V XL	8 1/2J	284	784	1150	2535	340/50	300/A/A	BSW	✓ ✓ ✓
275/55R20	117V XL	8 1/2J	284	810	1285	2833	340/50	300/A/A	BSW	✓ ✓ ✓
275/60R20	119H XL	8J	279	838	1360	2998	340/50	300/A/A	BSW	✓ ✓ ✓
285/30ZR20	99W	10 J	290	680	775	1709	340/50	300/A/A	BSW	✓ ✓ ✓
285/50R20	116V XL	9J	297	794	1250	2756	340/50	300/A/A	BSW	✓ ✓ ✓
305/35R20	107V XL	11J	313	722	975	2149	340/50	300/A/A	BSW	✓ ✓ ✓
315/35ZR20	110W XL	11 J	320	728	1060	2337	340/50	300/A/A	BSW	✓ ✓ ✓
305/40R20	112V XL	11J	313	752	1120	2469	340/50	300/A/A	BSW	✓ ✓ ✓
235/50ZR20	104W XL	7 1/2J	245	744	900	1984	340/50	300/A/A	BSW	✓ ✓ ✓
245/35ZR21	96W XL	8 1/2J	248	705	710	1565	340/50	300/A/A	BSW	✓ ✓ ✓
255/30ZR21	93W XL	9J	260	687	650	1433	340/50	300/A/A	BSW	✓ ✓ ✓
275/30ZR21	98W XL	9 1/2J	278	699	750	1653	340/50	300/A/A	BSW	✓ ✓ ✓
275/40ZR21	107V XL	9 1/2J	278	753	975	2149	340/50	300/A/A	BSW	✓ ✓ ✓
275/45ZR21	110W XL	9J	273	781	1060	2337	340/50	300/A/A	BSW	✓ ✓ ✓
275/50R21	113V XL	8 1/2J	284	809	1150	2535	340/50	300/A/A	BSW	✓ ✓ ✓
315/35ZR21	111W XL	11J	320	753	1090	2403	340/50	300/A/A	BSW	✓ ✓ ✓
315/40R21	115V XL	11J	320	785	1215	2679	340/50	300/A/A	BSW	✓ ✓ ✓
235/30ZR22	90W XL	8 1/2J	242	701	600	1323	340/50	300/A/A	BSW	✓ ✓ ✓
245/30ZR22	92W XL	8 1/2J	248	707	630	1389	340/50	300/A/A	BSW	✓ ✓ ✓
265/30R22	95W XL	9 J	260	713	690	1521	340/50	300/A/A	BSW	✓ ✓ ✓
265/30ZR22	97W	9 1/2J	271	719	730	1609	340/50	300/A/A	BSW	✓ ✓ ✓
265/45ZR22	110W XL	9J	266	797	1060	2337	340/50	300/A/A	BSW	✓ ✓ ✓
285/35ZR22	106W XL	10 J	290	759	950	2094	340/50	300/A/A	BSW	✓ ✓ ✓
285/50R22	118V XL	9J	297	845	1320	2910	340/50	300/A/A	BSW	✓ ✓ ✓
295/25ZR22	97W	10 1/2J	301	707	730	1609	340/50	300/A/A	BSW	✓ ✓ ✓
295/40R22	112V XL	10 1/2J	301	795	1120	2469	340/50	300/A/A	BSW	✓ ✓ ✓
255/30ZR24	97W	9 J	260	764	730	1609	340/50	300/A/A	BSW	✓ ✓ ✓

SPEEDKING 07

HP **UHP** A/S EV VAN H/T A/T R/T M/T WINTER STUDED

DRY GRIP	(10/10)
WET GRIP	(9/10)
SILENT PERFORMANCE	(9/10)
ECO-FRIENDLY	(9/10)
TREADWEAR	(8/10)

UHP

RANGE

19 - 24

ASPECT RATIO

30 - 55

SPEED SYMBOL

V - (W)

UTQG

400/A/A



"V-SHAPED" PATTERN DESIGN



"Y-SHAPED" DIRECTIONAL PATTERN DESIGN



SHOULDER DESIGN



TREAD PATTERN DESIGN

SIZE	LI/SI	Rim	SW (mm)	OD (mm)	Load Index (kg)	Max Pressure Kpa/Psi	UTQG	Sidewall	Icons	
255/55R19	11V	8 J	265	763	1090	2403	340/50	400/A/A	BSW	✓ ✓ ✓
255/50R20	109V XL	8J	265	764	1030	2271	340/50	400/A/A	BSW	✓ ✓ ✓
255/55R20	110V XL	8J	265	788	1060	2337	340/50	400/A/A	BSW	✓ ✓ ✓
265/50R20	111V	8 1/2J	277	774	1090	2403	340/50	400/A/A	BSW	✓ ✓ ✓
275/40ZR20	106W XL	9 1/2J	278	728	950	2094	340/50	400/A/A	BSW	✓ ✓ ✓
275/45R20	110V XL	9 J	273	756	1060	2337	340/50	400/A/A	BSW	✓ ✓ ✓
275/55R20	117V XL	8 1/2J	284	810	1285	2833	340/50	400/A/A	BSW	✓ ✓ ✓
275/60R20	119H XL	8 J	279	838	1360	2998	340/50	400/A/A	BSW	✓ ✓ ✓
285/50R20	116V	9 J	297	794	1250	2756	340/50	400/A/A	BSW	✓ ✓ ✓
295/45ZR20	114W	10 J	296	774	1180	2601	340/50	400/A/A	BSW	✓ ✓ ✓
315/35ZR20	110W XL	11J	320	728	1060	2337	340/50	400/A/A	BSW	✓ ✓ ✓
265/35ZR22	102W XL	9 1/2J	271	745	850	1874	340/50	400/A/A	BSW	✓ ✓ ✓
265/40R22	106V XL	9 1/2J	271	771	950	2094	340/50	400/A/A	BSW	✓ ✓ ✓
275/40ZR22	107W XL	9 1/2J	275	779	975	2149	340/50	400/A/A	BSW	✓ ✓ ✓
285/45R22	114V XL	9 1/2J	285	815	1180	2601	340/50	400/A/A	BSW	✓ ✓ ✓
285/35ZR22	106W	10 J	290	759	950	2094	340/50	400/A/A	BSW	✓ ✓ ✓
285/40R22	110V	10 J	290	787	1060	2337	340/50	400/A/A	BSW	✓ ✓ ✓
295/30ZR22	103W	10 1/2J	301	737	875	1929	340/50	400/A/A	BSW	✓ ✓ ✓
305/40R22	114V XL	11 J	313	803	1180	2601	340/50	400/A/A	BSW	✓ ✓ ✓
305/45R22	118V XL	10J	303	833	1320	2910	340/50	400/A/A	BSW	✓ ✓ ✓
275/25ZR24	96W	10J	283	748	710	1565	340/50	400/A/A	BSW	✓ ✓ ✓
295/35ZR24	110W	10 1/2J	301	816	1060	2337	340/50	400/A/A	BSW	✓ ✓ ✓
305/35ZR24	112W	11J	313	824	1120	2469	340/50	400/A/A	BSW	✓ ✓ ✓

THUNDER U09

HP **UHP** A/S EV VAN H/T A/T R/T M/T WINTER STUDED

DRY GRIP	(9/10)
WET GRIP	(10/10)
SILENT PERFORMANCE	(9/10)
ECO-FRIENDLY	(9/10)
TREADWEAR	(8/10)



UHP

RANGE

16 - 21

ASPECT RATIO

30 - 55

SPEED SYMBOL

V - (Y)

UTQG

400/A/A



ASYMMETRIC TREAD DESIGN



OPTIMIZED SILICA-BASED COMPOUND



MULTI-PITCH DESIGN



AQUAPLANING (OR HYDROPLANING) RESISTANCE DESIGN

SIZE	L/Sl	Rim	SW (mm)	OD (mm)	Load Index (kg)	Max Pressure Kpa/Psi	UTQG	Sidewall	Icons	
195/45R16	84V XL	6 1/2J	195	582	500	1102	340/50	400/A/A	BSW	✓ ✓ ✓
205/45R16	87W XL	7 J	206	590	545	1201	340/50	400/A/A	BSW	✓ ✓ ✓
205/50R16	91W XL	6 1/2J	214	612	615	1356	340/50	400/A/A	BSW	✓ ✓ ✓
205/55R16	94W XL	6 1/2J	214	632	670	1477	340/50	400/A/A	BSW	✓ ✓ ✓
215/40ZR16	86W XL	7 1/2J	218	578	530	1168	340/50	400/A/A	BSW	✓ ✓ ✓
215/45R16	90V XL	7 J	213	600	600	1323	340/50	400/A/A	BSW	✓ ✓ ✓
215/55ZR16	97W XL	7 J	226	642	730	1609	340/50	400/A/A	BSW	✓ ✓ ✓
225/50ZR16	96W XL	7 J	233	632	710	1565	340/50	400/A/A	BSW	✓ ✓ ✓
225/55R16	99W XL	7 J	233	664	775	1709	340/50	400/A/A	BSW	✓ ✓ ✓
165/35R17	68VXL	6 J	170	547	315	694	340/50	400/A/A	BSW	✓ ✓ ✓
165/40R17	72V	6 J	170	564	355	783	340/50	400/A/A	BSW	✓ ✓ ✓
165/45R17	76V XL	5 1/2J	165	579	400	882	340/50	400/A/A	BSW	✓ ✓ ✓
185/35R17	82V	6 1/2J	183	562	475	1047	340/50	400/A/A	BSW	✓ ✓ ✓
185/40R17	78V XL	6 1/2J	188	580	425	937	340/50	400/A/A	BSW	✓ ✓ ✓
195/45ZR17	85W XL	6 1/2J	195	608	515	1135	340/50	400/A/A	BSW	✓ ✓ ✓
205/40R17	84W XL	7 1/2J	212	596	500	1102	340/50	400/A/A	BSW	✓ ✓ ✓
205/45R17	88W XL	7 J	206	616	560	1235	340/50	400/A/A	BSW	✓ ✓ ✓
205/50R17	93W XL	6 1/2J	214	638	650	1433	340/50	400/A/A	BSW	✓ ✓ ✓
205/55ZR17	95W XL	6 1/2J	214	658	690	1521	340/50	400/A/A	BSW	✓ ✓ ✓
215/40ZR17	87W XL	7 1/2J	218	604	545	1201	340/50	400/A/A	BSW	✓ ✓ ✓
215/45R17	91W XL	7 J	213	626	615	1356	340/50	400/A/A	BSW	✓ ✓ ✓
215/50R17	95W XL	7 J	226	648	690	1521	340/50	400/A/A	BSW	✓ ✓ ✓
215/55R17	98W XL	7 J	226	668	750	1653	340/50	400/A/A	BSW	✓ ✓ ✓
225/45R17	94W XL	7 1/2J	225	634	670	1477	340/50	400/A/A	BSW	✓ ✓ ✓
225/50R17	98W XL	7 J	233	658	750	1653	340/50	400/A/A	BSW	✓ ✓ ✓
225/55R17	101W XL	7 J	233	680	825	1819	340/50	400/A/A	BSW	✓ ✓ ✓
235/45R17	97W XL	8 J	236	644	730	1609	340/50	400/A/A	BSW	✓ ✓ ✓
235/50R17	100V	7 1/2J	245	668	800	1764	340/50	400/A/A	BSW	✓ ✓ ✓
235/55ZR17	103W	7 1/2J	245	690	875	1929	340/50	400/A/A	BSW	✓ ✓ ✓
245/40ZR17	95W XL	8 1/2J	248	628	690	1521	340/50	400/A/A	BSW	✓ ✓ ✓
245/45ZR17	99W	8 J	243	652	775	1709	340/50	400/A/A	BSW	✓ ✓ ✓
185/35R18	83V	6 1/2J	183	587	487	1074	340/50	400/A/A	BSW	✓ ✓ ✓
215/35ZR18	84W XL	7 1/2J	218	607	500	1102	340/50	400/A/A	BSW	✓ ✓ ✓
215/40ZR18	89W XL	7 1/2J	218	629	580	1279	340/50	400/A/A	BSW	✓ ✓ ✓
215/45ZR18	93W XL	7 J	213	651	650	1433	340/50	400/A/A	BSW	✓ ✓ ✓

SIZE	LI/SI	Rim	SW (mm)	OD (mm)	Load Index (kg)	Max Pressure (Lbs)	UTQG	Sidewall				
215/55R18	99V	7 J	226	693	775	1709	340/50	400/A/A	BSW	✓	✓	✓
225/40R18	92W XL	8 J	230	637	630	1389	340/50	400/A/A	BSW	✓	✓	✓
225/45R18	95W XL	7 1/2J	225	659	690	1521	340/50	400/A/A	BSW	✓	✓	✓
225/55R18	102V	7 J	233	705	850	1874	340/50	400/A/A	BSW	✓	✓	✓
235/40R18	95W XL	8 1/2J	241	645	690	1521	340/50	400/A/A	BSW	✓	✓	✓
235/45ZR18	96W XL	8 J	236	669	750	1653	340/50	400/A/A	BSW	✓	✓	✓
235/50R18	97V	7 1/2J	245	693	730	1609	300/44	400/A/A	BSW	✓	✓	✓
235/55R18	104V	7 1/2J	245	715	900	1984	340/50	400/A/A	BSW	✓	✓	✓
245/40R18	97W XL	8 1/2J	248	653	730	1609	340/50	400/A/A	BSW	✓	✓	✓
245/45R18	100W XL	8 J	243	677	800	1764	340/50	400/A/A	BSW	✓	✓	✓
245/50ZR18	104W	7 1/2J	253	703	900	1984	340/50	400/A/A	BSW	✓	✓	✓
255/35ZR18	94W XL	9J	260	635	670	1477	340/50	400/A/A	BSW	✓	✓	✓
255/40ZR18	99W XL	9J	260	661	775	1709	340/50	400/A/A	BSW	✓	✓	✓
255/45ZR18	103W	8 1/2J	255	687	875	1929	340/50	400/A/A	BSW	✓	✓	✓
255/55R18	109V	8 J	265	737	1030	2271	340/50	400/A/A	BSW	✓	✓	✓
265/35ZR18	97W XL	9 1/2J	271	643	730	1609	340/50	400/A/A	BSW	✓	✓	✓
275/35ZR18	99W XL	9 1/2J	278	649	775	1709	340/50	400/A/A	BSW	✓	✓	✓
215/35ZR19	85W XL	7 1/2J	218	633	515	1135	340/50	400/A/A	BSW	✓	✓	✓
225/35ZR19	88W XL	8J	230	641	560	1235	340/50	400/A/A	BSW	✓	✓	✓
225/45ZR19	96W XL	7 1/2J	225	685	710	1565	340/50	400/A/A	BSW	✓	✓	✓
225/55R19	99V	7J	233	731	775	1709	300/44	400/A/A	BSW	✓	✓	✓
235/35ZR19	91W XL	8 1/2J	241	647	615	1356	340/50	400/A/A	BSW	✓	✓	✓
235/40ZR19	96W	8 1/2J	241	671	710	1565	340/50	400/A/A	BSW	✓	✓	✓
235/45ZR19	99W XL	8J	236	695	775	1709	340/50	400/A/A	BSW	✓	✓	✓
235/50ZR19	103W XL	7 1/2J	245	719	875	1929	340/50	400/A/A	BSW	✓	✓	✓
235/55R19	105V XL	7 1/2J	245	741	925	2039	340/50	400/A/A	BSW	✓	✓	✓
245/35ZR19	93W XL	8 1/2J	248	655	650	1433	340/50	400/A/A	BSW	✓	✓	✓
245/40ZR19	98W XL	8 1/2J	248	679	750	1653	340/50	400/A/A	BSW	✓	✓	✓
245/45R19	102W XL	8 J	243	703	850	1874	340/50	400/A/A	BSW	✓	✓	✓
245/55R19	107V XL	7 1/2J	253	753	975	2149	340/50	400/A/A	BSW	✓	✓	✓
255/30ZR19	91Y XL	9J	260	637	615	1356	340/50	400/A/A	BSW	✓	✓	✓
255/35ZR19	96W XL	9J	260	661	710	1565	340/50	400/A/A	BSW	✓	✓	✓
255/40ZR19	100W XL	9J	260	687	800	1764	340/50	400/A/A	BSW	✓	✓	✓
255/45ZR19	104W XL	8 1/2J	255	713	900	1984	340/50	400/A/A	BSW	✓	✓	✓
255/50R19	107V XL	8J	265	739	975	2149	340/50	400/A/A	BSW	✓	✓	✓

SIZE	LI/SI	Rim	SW (mm)	OD (mm)	Load Index (kg)	Max Pressure (Lbs)	UTQG	Sidewall				
275/30ZR19	96WXL	9 1/2J	278	649	710	1565	340/50	400/A/A	BSW	✓	✓	✓
275/35ZR19	100Y XL	9 1/2J	278	675	800	1764	340/50	400/A/A	BSW	✓	✓	✓
275/40ZR19	105W XL	9 1/2J	278	703	925	2039	340/50	400/A/A	BSW	✓	✓	✓
285/45R19	111V XL	9 1/2J	285	739	1090	2403	340/50	400/A/A	BSW	✓	✓	✓
205/35R20	84V	7 1/2J	212	652	500	1102	340/50	400/A/A	BSW	✓	✓	✓
225/35ZR20	90W	8 J	230	666	600	1323	340/50	400/A/A	BSW	✓	✓	✓
245/35ZR20	95W XL	8 1/2J	248	680	690	1521	340/50	400/A/A	BSW	✓	✓	✓
245/40ZR20	99W XL	8 1/2J	248	704	775	1709	340/50	400/A/A	BSW	✓	✓	✓
255/35ZR20	97W XL	9J	260	686	730	1609	340/50	400/A/A	BSW	✓	✓	✓
275/30ZR20	97W XL	9 1/2J	278	674	730	1609	340/50	400/A/A	BSW	✓	✓	✓
275/35ZR20	102W XL	9 1/2J	278	700	850	1874	340/50	400/A/A	BSW	✓	✓	✓
265/45ZR21	108W XL	9J	266	771	1000	2205	340/50	400/A/A	BSW	✓	✓	✓
275/45ZR21	110W XL	9J	273	781	1060	2337	340/50	400/A/A	BSW	✓	✓	✓
295/35ZR21	107W XL	10 1/2J	301	739	975	2149	340/50	400/A/A	BSW	✓	✓	✓
295/40ZR21	111W XL	10 1/2J	301	769	1090	2403	340/50	400/A/A	BSW	✓	✓	✓

L-ZEAL 56 RFT

HP **UHP** A/S EV VAN H/T A/T R/T M/T WINTER STUDED

DRY GRIP	(10/10)
WET GRIP	(9/10)
SILENT PERFORMANCE	(9/10)
ZERO PRESSURE TECHNOLOGY	(9/10)
TREADWEAR	(8/10)

UHP



RANGE
17 - 20

ASPECT RATIO
30 - 55

SPEED SYMBOL
V - (W)

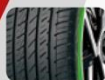
UTQG
300/A/A



HIGH-STRENGTH BEAD STRUCTURE



APEX LOW-HEAT-GENERATION FORMULA DESIGN



SIDEWALL WITH HIGH-STRENGTH CORD REINFORCEMENT LAYER



SIDEWALL WITH DUAL COMPOSITE SIDEWALL SUPPORT RUBBER

SIZE	L/Sl	Rim	SW (mm)	OD (mm)	Load Index (kg)	Max Pressure (Lbs)	UTQG	Sidewall	Icons	
205/45ZR17	88W XL	7J	206	616	560	1235	340/50	300/A/A	BSW	✓ ✓ ✓
205/50ZR17	93W XL	6 1/2J	214	638	650	1433	340/50	300/A/A	BSW	✓ ✓ ✓
225/45ZR17	94W XL	7 1/2J	225	634	670	1477	340/50	300/A/A	BSW	✓ ✓ ✓
225/50ZR17	98W XL	7J	233	658	750	1653	340/50	300/A/A	BSW	✓ ✓ ✓
225/55RF17	97V	7J	233	680	730	1609	300/44	300/A/A	BSW	✓ ✓ ✓
235/55RF17	99V	7 1/2J	245	690	775	1709	300/44	300/A/A	BSW	✓ ✓ ✓
245/40ZR17	95W XL	8 1/2J	248	628	690	1521	340/50	300/A/A	BSW	✓ ✓ ✓
245/45ZR17	99W XL	8 J	243	652	775	1709	340/50	300/A/A	BSW	✓ ✓ ✓
215/55ZR18	99W XL	7J	226	693	775	1709	340/50	300/A/A	BSW	✓ ✓ ✓
225/40ZR18	92W XL	8 J	230	637	630	1389	340/50	300/A/A	BSW	✓ ✓ ✓
225/45ZR18	95W XL	7 1/2J	225	659	690	1521	340/50	300/A/A	BSW	✓ ✓ ✓
225/50ZR18	95W	7J	233	683	690	1521	300/44	300/A/A	BSW	✓ ✓ ✓
235/50RF18	97V	7 1/2J	245	693	730	1609	300/44	300/A/A	BSW	✓ ✓ ✓
245/40ZR18	97W XL	8 1/2J	248	653	730	1609	340/50	300/A/A	BSW	✓ ✓ ✓
245/45ZR18	100W XL	8 J	243	677	800	1764	340/50	300/A/A	BSW	✓ ✓ ✓
255/35ZR18	94W XL	9 J	260	635	670	1477	340/50	300/A/A	BSW	✓ ✓ ✓
255/40ZR18	99W XL	9J	260	661	775	1709	340/50	300/A/A	BSW	✓ ✓ ✓
255/45ZR18	99W	8 1/2J	255	687	775	1709	300/44	300/A/A	BSW	✓ ✓ ✓
235/55RF18	100V	7 1/2J	245	715	800	1764	300/44	300/A/A	BSW	✓ ✓ ✓
245/50RF18	100V	7 1/2J	253	703	800	1764	300/44	300/A/A	BSW	✓ ✓ ✓
255/55RF18	105V	8J	265	737	925	2039	300/44	300/A/A	BSW	✓ ✓ ✓
275/40ZR18	99W	9 1/2J	278	677	775	1709	300/44	300/A/A	BSW	✓ ✓ ✓
225/35ZR19	84W	8J	230	641	500	1102	300/44	300/A/A	BSW	✓ ✓ ✓
225/40ZR19	93W XL	8J	230	663	650	1433	340/50	300/A/A	BSW	✓ ✓ ✓
235/35ZR19	91W XL	8 1/2J	241	647	615	1356	340/50	300/A/A	BSW	✓ ✓ ✓
235/45ZR19	95W	8J	236	695	690	1521	300/44	300/A/A	BSW	✓ ✓ ✓
235/50RF19	99V	7 1/2J	245	719	775	1709	300/44	300/A/A	BSW	✓ ✓ ✓
245/35ZR19	93W XL	8 1/2J	248	655	650	1433	340/50	300/A/A	BSW	✓ ✓ ✓
245/40ZR19	98W XL	8 1/2J	248	679	750	1653	340/50	300/A/A	BSW	✓ ✓ ✓
245/45ZR19	98W	8J	243	703	750	1653	300/44	300/A/A	BSW	✓ ✓ ✓
245/50RF19	105V XL	7 1/2J	253	729	925	2039	340/50	300/A/A	BSW	✓ ✓ ✓
255/35ZR19	96W XL	9J	260	661	710	1565	340/50	300/A/A	BSW	✓ ✓ ✓
255/45ZR19	100W	8 1/2J	255	713	800	1764	300/44	300/A/A	BSW	✓ ✓ ✓
235/55RF19	101V	7 1/2J	245	741	825	1819	300/44	300/A/A	BSW	✓ ✓ ✓
255/50RF19	103V	8J	265	739	875	1929	300/44	300/A/A	BSW	✓ ✓ ✓
275/35ZR19	100W XL	9 1/2J	278	675	800	1764	340/50	300/A/A	BSW	✓ ✓ ✓
275/40ZR19	105W XL	9 1/2J	278	703	925	2039	340/50	300/A/A	BSW	✓ ✓ ✓
285/45RF19	107V	9 1/2J	285	739	975	2149	300/44	300/A/A	BSW	✓ ✓ ✓
275/40ZR19	101W	9 1/2J	278	703	825	1819	300/44	300/A/A	BSW	✓ ✓ ✓
245/35ZR20	95W XL	8 1/2J	248	680	690	1521	340/50	300/A/A	BSW	✓ ✓ ✓
245/40ZR20	99W XL	8 1/2J	248	704	775	1709	340/50	300/A/A	BSW	✓ ✓ ✓
245/45ZR20	103W XL	8J	243	728	875	1929	340/50	300/A/A	BSW	✓ ✓ ✓
275/30ZR20	97W XL	9 1/2J	278	674	730	1609	340/50	300/A/A	BSW	✓ ✓ ✓
275/35ZR20	102W XL	9 1/2J	278	700	850	1874	340/50	300/A/A	BSW	✓ ✓ ✓
275/40ZR20	102W	9 1/2J	278	728	850	1874	300/44	300/A/A	BSW	✓ ✓ ✓
255/45RF20	101V	8 1/2J	255	738	825	1819	300/44	300/A/A	BSW	✓ ✓ ✓
315/35ZR20	110W XL	11 J	320	728	1060	2337	340/50	300/A/A	BSW	✓ ✓ ✓
315/35ZR20	106W	11 J	320	728	950	2094	300/44	300/A/A	BSW	✓ ✓ ✓

ALWAYS WITH YOU

Tire Direct
La nueva generación

* NEW DEVELOPING SIZES / THE LABELING INFORMATION ARE SUBJECT TO CHANGE WITHOUT NOTICE

MULTIMATCH A/S

HP UHP **A/S** EV VAN H/T A/T R/T M/T WINTER STUDED

DRY HANDLING	(9/10)
WET HANDLING	(9/10)
SILENT & COMFORT	(9/10)
SNOW PERFORMANCE	(9/10)
ICE PERFORMANCE	(8/10)



A/S



MADE IN CAMBODIA

RANGE
13 - 20

ASPECT RATIO
35 - 80

SPEED SYMBOL
T - (W)

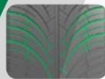
UTQG
420/A/A



STREAMLINED LATERAL GROOVES WITH SIPING



HIGH-RIGIDITY SHOULDER RIB DESIGN



OPTIMIZED GROOVE CONFIGURATION



INNOVATIVE ALL-SEASON TREAD COMPOUND

SIZE	L/Sl	Rim	SW (mm)	OD (mm)	Load Index (kg)	Max Pressure Kpa/Psi	UTQG	Sidewall	0	0	0	
145/70R13	71T	450B	150	534	345	761	300/44	420/A/A	BSW	✓	✓	✓
145/80R13	75T	4.00B	145	562	387	853	300/44	420/A/A	BSW	✓	✓	✓
155/65R13	73T	4.50B	157	532	365	805	300/44	420/A/A	BSW	✓	✓	✓
155/70R13	75T	4.50B	157	548	387	853	300/44	420/A/A	BSW	✓	✓	✓
155/80R13	79T	4.50B	157	578	437	963	300/44	420/A/A	BSW	✓	✓	✓
165/70R13	79T	5.00B	170	562	437	963	300/44	420/A/A	BSW	✓	✓	✓
175/65R13	80T	5.00B	177	558	450	992	300/44	420/A/A	BSW	✓	✓	✓
175/70R13	82T	5J	177	576	475	1047	300/44	420/A/A	BSW	✓	✓	✓
155/65R14	75T	4.50B	157	558	387	853	300/44	420/A/A	BSW	✓	✓	✓
165/60R14	75H	5.00B	170	554	387	853	300/44	420/A/A	BSW	✓	✓	✓
165/65R14	79T	5J	170	570	437	963	300/44	420/A/A	BSW	✓	✓	✓
165/70R14	81T	5J	170	588	462	1019	300/44	420/A/A	BSW	✓	✓	✓
175/65R14	82T	5J	177	584	475	1047	300/44	420/A/A	BSW	✓	✓	✓
175/70R14	88T XL	5J	177	602	560	1235	340/50	420/A/A	BSW	✓	✓	✓
175/80R14	88T	5J	177	636	560	1235	300/44	420/A/A	BSW	✓	✓	✓
185/55R14	80H	6J	194	560	450	992	300/44	420/A/A	BSW	✓	✓	✓
185/60R14	82H	5 1/2J	189	578	475	1047	300/44	420/A/A	BSW	✓	✓	✓
185/65R14	86H	5 1/2J	189	596	530	1168	300/44	420/A/A	BSW	✓	✓	✓
185/70R14	88H	5 1/2J	189	616	560	1235	300/44	420/A/A	BSW	✓	✓	✓
195/70R14	91H	6J	201	630	615	1356	300/44	420/A/A	BSW	✓	✓	✓
165/60R15	81H XL	5J	170	579	462	1019	340/50	420/A/A	BSW	✓	✓	✓
165/65R15	81T	5J	170	595	462	1019	300/44	420/A/A	BSW	✓	✓	✓
175/55R15	77H	5 1/2J	182	573	412	908	300/44	420/A/A	BSW	✓	✓	✓
175/60R15	81H	5J	177	591	462	1019	300/44	420/A/A	BSW	✓	✓	✓
175/65R15	84H	5J	177	609	500	1102	300/44	420/A/A	BSW	✓	✓	✓
185/55R15	82H	6J	194	585	475	1047	300/44	420/A/A	BSW	✓	✓	✓
185/60R15	86H XL	5 1/2J	189	603	560	1235	340/50	420/A/A	BSW	✓	✓	✓
185/65R15	92T XL	5 1/2J	189	621	630	1389	340/50	420/A/A	BSW	✓	✓	✓
195/50R15	82V	6J	201	577	475	1047	300/44	420/A/A	BSW	✓	✓	✓
195/55R15	85H	6J	201	595	515	1135	300/44	420/A/A	BSW	✓	✓	✓
195/60R15	88H	6J	201	615	560	1235	300/44	420/A/A	BSW	✓	✓	✓
195/65R15	91H	6J	201	635	615	1356	300/44	420/A/A	BSW	✓	✓	✓
195/65R15	95V XL	6J	201	635	690	1521	340/50	420/A/A	BSW	✓	✓	✓
205/65R15	94V	6J	209	647	670	1477	300/44	420/A/A	BSW	✓	✓	✓
215/65R15	96H	6 1/2J	221	661	710	1565	300/44	420/A/A	BSW	✓	✓	✓
195/45R16	84V XL	6 1/2J	195	582	500	1102	340/50	420/A/A	BSW	✓	✓	✓
195/50R16	88V XL	6J	201	602	560	1235	340/50	420/A/A	BSW	✓	✓	✓
195/55R16	91V XL	6J	201	620	615	1356	340/50	420/A/A	BSW	✓	✓	✓
195/60R16	89H	6J	201	640	580	1278	300/44	420/A/A	BSW	✓	✓	✓
205/45ZR16	87W XL	7J	206	590	545	1201	340/50	420/A/A	BSW	✓	✓	✓

SIZE	LI/SL	Rim	SW (mm)	OD (mm)	Load Index (kg)	Max Pressure (Lbs)	Max Pressure Kpa/Psi	UTQG	Sidewall	
205/50ZR16	91W XL	6 1/2J	214	612	615	1356	340/50	420/A/A	BSW	✓ ✓ ✓
205/55R16	91H	6 1/2J	214	632	615	1356	300/44	420/A/A	BSW	✓ ✓ ✓
205/55R16	94W XL	6 1/2J	214	632	670	1477	340/50	420/A/A	BSW	✓ ✓ ✓
205/60R16	96V XL	6I	209	652	710	1565	340/50	420/A/A	BSW	✓ ✓ ✓
215/45R16	90V XL	7J	213	600	600	1323	340/50	420/A/A	BSW	✓ ✓ ✓
215/55R16	97V XL	7J	226	642	730	1609	340/50	420/A/A	BSW	✓ ✓ ✓
215/60R16	99H XL	6 1/2J	221	664	775	1709	340/50	420/A/A	BSW	✓ ✓ ✓
215/65R16	102H XL	6 1/2J	221	686	850	1874	340/50	420/A/A	BSW	✓ ✓ ✓
215/70R16	100H	6 1/2J	221	708	800	1764	300/44	420/A/A	BSW	✓ ✓ ✓
225/55ZR16	99W XL	7J	233	654	775	1709	340/50	420/A/A	BSW	✓ ✓ ✓
225/60R16	98H	6 1/2J	228	676	750	1653	300/44	420/A/A	BSW	✓ ✓ ✓
235/60R16	100H	7 J	240	688	800	1764	300/44	420/A/A	BSW	✓ ✓ ✓
205/40ZR17	84W XL	7 1/2J	212	596	500	1102	340/50	420/A/A	BSW	✓ ✓ ✓
205/45ZR17	88W XL	7J	206	616	560	1235	340/50	420/A/A	BSW	✓ ✓ ✓
205/50ZR17	93W XL	6 1/2J	214	638	650	1433	340/50	420/A/A	BSW	✓ ✓ ✓
205/55ZR17	95W XL	6 1/2J	214	658	690	1521	340/50	420/A/A	BSW	✓ ✓ ✓
215/40ZR17	87W XL	7 1/2J	218	604	545	1201	340/50	420/A/A	BSW	✓ ✓ ✓
215/45ZR17	91W XL	7J	213	626	615	1356	340/50	420/A/A	BSW	✓ ✓ ✓
215/50ZR17	95W XL	7J	226	648	690	1521	340/50	420/A/A	BSW	✓ ✓ ✓
215/55ZR17	98W XL	7J	226	668	750	1653	340/50	420/A/A	BSW	✓ ✓ ✓
215/60R17	96H	6 1/2J	221	690	710	1565	300/44	420/A/A	BSW	✓ ✓ ✓
215/65R17	99T	6 1/2J	221	712	775	1709	300/44	420/A/A	BSW	✓ ✓ ✓
225/45ZR17	94W XL	7 1/2J	225	634	670	1477	340/50	420/A/A	BSW	✓ ✓ ✓
225/50ZR17	98W XL	7J	233	658	750	1653	340/50	420/A/A	BSW	✓ ✓ ✓
225/55ZR17	101W XL	7J	233	680	825	1819	340/50	420/A/A	BSW	✓ ✓ ✓
225/60R17	99H	6 1/2J	228	702	775	1709	300/44	420/A/A	BSW	✓ ✓ ✓
225/65R17	106H XL	6 1/2J	228	724	950	2094	340/50	420/A/A	BSW	✓ ✓ ✓
235/45ZR17	97W XL	8J	236	644	730	1609	340/50	420/A/A	BSW	✓ ✓ ✓
235/55ZR17	103W XL	7 1/2J	245	690	875	1929	340/50	420/A/A	BSW	✓ ✓ ✓
235/65R17	108H XL	7J	240	738	1000	2205	340/50	420/A/A	BSW	✓ ✓ ✓
245/45ZR17	99W XL	8 J	243	652	775	1709	340/50	420/A/A	BSW	✓ ✓ ✓
255/60R17	110H XL	7 1/2J	260	738	1060	2337	340/50	420/A/A	BSW	✓ ✓ ✓
215/55R18	99V XL	7 J	226	693	775	1709	340/50	420/A/A	BSW	✓ ✓ ✓
225/40ZR18	92W XL	8J	230	637	630	1389	340/50	420/A/A	BSW	✓ ✓ ✓
225/45ZR18	95W XL	7 1/2J	225	659	690	1521	340/50	420/A/A	BSW	✓ ✓ ✓
225/50ZR18	99W XL	7J	233	683	775	1709	340/50	420/A/A	BSW	✓ ✓ ✓
225/55R18	98V	7J	233	705	750	1653	300/44	420/A/A	BSW	✓ ✓ ✓
235/40ZR18	95W XL	8 1/2J	241	645	690	1521	340/50	420/A/A	BSW	✓ ✓ ✓
235/45ZR18	98W XL	8 J	236	669	750	1653	340/50	420/A/A	BSW	✓ ✓ ✓
235/50ZR18	101W XL	7 1/2J	245	693	825	1819	340/50	420/A/A	BSW	✓ ✓ ✓

SIZE	LI/SL	Rim	SW (mm)	OD (mm)	Load Index (kg)	Max Pressure (Lbs)	Max Pressure Kpa/Psi	UTQG	Sidewall	
235/55R18	104W XL	7 1/2J	245	715	900	1984	340/50	420/A/A	BSW	✓ ✓ ✓
235/60R18	107V XL	7J	240	739	975	2149	340/50	420/A/A	BSW	✓ ✓ ✓
245/40ZR18	97W XL	8 1/2J	248	653	730	1609	340/50	420/A/A	BSW	✓ ✓ ✓
245/45ZR18	100W XL	8J	243	677	800	1764	340/50	420/A/A	BSW	✓ ✓ ✓
255/55R18	105V	8 J	265	737	925	2039	300/44	420/A/A	BSW	✓ ✓ ✓
255/60R18	112H XL	7 1/2J	260	763	1120	2469	340/50	420/A/A	BSW	✓ ✓ ✓
155/70R19	84T	4 1/2J	157	701	500	1102	300/44	420/A/A	BSW	✓ ✓ ✓
205/55R19	97V XL	6 1/2J	214	709	730	1609	340/50	420/A/A	BSW	✓ ✓ ✓
225/35ZR19	88W XL	8J	230	641	560	1235	340/50	420/A/A	BSW	✓ ✓ ✓
225/40ZR19	93W XL	8J	230	663	650	1433	340/50	420/A/A	BSW	✓ ✓ ✓
225/45ZR19	96W XL	7 1/2J	225	685	710	1565	340/50	420/A/A	BSW	✓ ✓ ✓
225/55R19	99V	7J	233	731	775	1709	300/44	420/A/A	BSW	✓ ✓ ✓
235/35ZR19	91W XL	8 1/2J	241	647	615	1356	340/50	420/A/A	BSW	✓ ✓ ✓
235/45ZR19	99W XL	8J	238	695	775	1709	340/50	420/A/A	BSW	✓ ✓ ✓
235/55R19	105V XL	7 1/2J	245	741	925	2039	340/50	420/A/A	BSW	✓ ✓ ✓
245/40ZR19	98W XL	8 1/2J	248	679	750	1653	340/50	420/A/A	BSW	✓ ✓ ✓
245/45ZR19	102W XL	8 J	243	703	850	1874	340/50	420/A/A	BSW	✓ ✓ ✓
255/35ZR19	96W XL	9J	260	661	710	1565	340/50	420/A/A	BSW	✓ ✓ ✓
255/40ZR19	100W XL	9J	260	687	800	1764	340/50	420/A/A	BSW	✓ ✓ ✓
285/45R19	111V XL	9 1/2J	285	739	1090	2403	340/50	420/A/A	BSW	✓ ✓ ✓
195/55R20	91V	6J	201	722	615	1356	300/44	420/A/A	BSW	✓ ✓ ✓
245/35ZR20	95W XL	8 1/2J	248	680	690	1521	340/50	420/A/A	BSW	✓ ✓ ✓
245/40ZR20	99W XL	8 1/2J	248	704	775	1709	340/50	420/A/A	BSW	✓ ✓ ✓
255/35ZR20	97W XL	9J	260	686	730	1609	340/50	420/A/A	BSW	✓ ✓ ✓
255/40ZR20	101W XL	9J	260	712	825	1819	340/50	420/A/A	BSW	✓ ✓ ✓
255/45ZR20	105W XL	8 1/2J	255	738	925	2039	340/50	420/A/A	BSW	✓ ✓ ✓
265/45R20	108V XL	9J	266	746	1000	2205	340/50	420/A/A	BSW	✓ ✓ ✓
315/35ZR20	110W XL	11J	320	728	1060	2337	340/50	420/A/A	BSW	✓ ✓ ✓

MULTIMILE A/S

HP UHP **A/S** EV VAN H/T A/T R/T M/T WINTER STUDED



A/S



MADE IN CAMBODIA

RANGE

14 - 17

ASPECT RATIO

60 - 75

SPEED SYMBOL

R - (H)

PLY RATING

6 - 10



THREE STEPPED LONGITUDINAL GROOVES



WIDE SHOULDER BLOCK DESIGN



LOW-NOISE TREAD PATTERN



INNOVATIVE ALL-SEASON TREAD COMPOUND

SIZE	LI/SI	PR	Rim	SW (mm)	OD (mm)	Load Index (kg)	Load Index (Lbs)	Max Pressure Kpa/Psi	Sidewall	TPMS	EV	UHP
175/65R14C	90/88T	6	5	177	584	600/560	1323/1235	375/54	BSW	✓	✓	✓
175/70R14C	95/93T	6	5	177	602	690/650	1521/1433	375/54	BSW	✓	✓	✓
195/70R15C	104/102R	8	6	201	655	900/850	1984/1874	450/65	BSW	✓	✓	✓
205/70R15C	106/104R	8	6	209	669	950/900	2094/1984	450/65	BSW	✓	✓	✓
215/70R15C	109/107R	8	6 1/2	221	683	1030/975	2271/2149	450/65	BSW	✓	✓	✓
225/70R15C	112/110R	8	6 1/2	228	697	1120/1060	2469/2337	450/65	BSW	✓	✓	✓
185/75R16C	104/102R	8	5	184	684	900/850	1984/1874	475/69	BSW	✓	✓	✓
195/60R16C	99/97H	6	6	201	640	775/730	1709/1609	375/54	BSW	✓	✓	✓
195/65R16C	104/102T	8	6	201	660	900/850	1984/1874	475/69	BSW	✓	✓	✓
195/75R16C	107/105R	8	5 1/2	196	698	975/925	2149/2039	475/69	BSW	✓	✓	✓
205/65R16C	107/105T	8	6	209	672	975/925	2149/2039	475/69	BSW	✓	✓	✓
205/75R16C	113/111R	10	5.5	203	714	1150/1090	2535/2403	525/76	BSW	✓	✓	✓
215/60R16C	103/101T	6	6 1/2	221	664	875/825	1929/1819	375/54	BSW	✓	✓	✓
215/65R16C	109/107T	8	6 1/2	221	686	1030/975	2271/2149	475/69	BSW	✓	✓	✓
215/75R16C	113/111R	8	6	216	728	1150/1090	2535/2403	475/69	BSW	✓	✓	✓
225/65R16C	112/110R	8	6 1/2	228	698	1120/1060	2469/2337	475/69	BSW	✓	✓	✓
225/75R16C	121/120R	10	6	223	744	1450/1400	3197/3066	575/83	BSW	✓	✓	✓
235/65R16C	115/113R	8	7	240	712	1215/1150	2679/2535	475/69	BSW	✓	✓	✓
215/60R17C	109/107T	8	6 1/2	221	690	1030/975	2271/2149	475/69	BSW	✓	✓	✓

X-MASTER EV

HP UHP A/S **EV** VAN H/T A/T R/T M/T WINTER STUDED

ECONOMIC PERFORMANCE (9/10)



WET BRAKING (9/10)



COMFORT PERFORMANCE (9/10)



SILENT PERFORMANCE (9/10)



EV

RANGE

17 - 22

ASPECT RATIO

30 - 50

SPEED SYMBOL

V - (Y)

UTQG

320/A/A



TRIPLE COMPOUND PITCH DESIGN



LARGE SHOULDER BLOCK DESIGN



ASYMMETRIC TREAD PATTERN DESIGN



WIDENED MAIN GROOVE DESIGN



LOW ROLLING RESISTANCE & HIGH WET TRACTION TREAD COMPOUND DESIGN

OPTIMIZED PRESSURE DISTRIBUTION DESIGN

SIZE	LI/SI	Rim	SW (mm)	OD (mm)	Load Index (kg)	Load Index (Lbs)	Max Pressure Kpa/Psi	UTQG	Sidewall			
235/50ZR19	103W XL	7 1/2J	245	719	875	1929	340/50	320/A/A	BSW	✓	✓	✓
235/55R19	105V XL	7 1/2J	245	741	925	2039	340/50	320/A/A	BSW	✓	✓	✓
245/45R19	102V XL	8 J	243	703	850	1874	340/50	320/A/A	BSW	✓	✓	✓
245/50R19	105V XL	7 1/2J	253	729	925	2039	340/50	320/A/A	BSW	✓	✓	✓
255/45ZR19	104W XL	8 1/2J	255	713	900	1984	340/50	320/A/A	BSW	✓	✓	✓
255/50R19	107V XL	8J	265	739	975	2149	340/50	320/A/A	BSW	✓	✓	✓
255/55R19	111V XL	8J	265	763	1090	2403	340/50	320/A/A	BSW	✓	✓	✓
235/50ZR20	104W XL	7 1/2J	245	744	900	1984	340/50	320/A/A	BSW	✓	✓	✓
235/55R20	105V XL	7 1/2J	245	766	925	2039	340/50	320/A/A	BSW	✓	✓	✓
245/45ZR20	103W XL	8J	243	728	875	1929	340/50	320/A/A	BSW	✓	✓	✓
255/45ZR20	105W XL	8 1/2J	255	738	925	2039	340/50	320/A/A	BSW	✓	✓	✓
255/50R20	109V XL	8J	265	764	1030	2271	340/50	320/A/A	BSW	✓	✓	✓
255/35ZR21	98W XL	9J	260	711	750	1653	340/50	320/A/A	BSW	✓	✓	✓
275/35ZR21	103W XL	9 1/2J	278	725	875	1929	340/50	320/A/A	BSW	✓	✓	✓
255/40ZR21	102Y XL	9J	260	737	850	1874	340/50	320/A/A	BSW	✓	✓	✓
255/45ZR21	106Y XL	8 1/2J	255	763	950	2094	340/50	320/A/A	BSW	✓	✓	✓
265/45ZR21	108W XL	9J	266	771	1000	2205	340/50	320/A/A	BSW	✓	✓	✓

ALWAYS WITH YOU

Tire Direct
La nueva generación

* NEW DEVELOPING SIZES / THE LABELING INFORMATION ARE SUBJECT TO CHANGE WITHOUT NOTICE

SMARTTOUR E1

HP UHP A/S EV **VAN** H/T A/T R/T M/T WINTER STUDED



VAN

RANGE

13 - 17

ASPECT RATIO

65 - 75

SPEED SYMBOL

R - (T)

PLY RATING

6 - 10



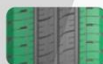
PRESSURE EVENLY DISTRIBUTED HIGH WEAR TECHNOLOGY



HIGH DRAINAGE PERFORMANCE



GOOD GRIP PERFORMANCE AND GOOD HANDLING



XCELLENT DURABILITY PERFORMANCE



EXCELLENT SEASONAL PERFORMANCE

SIZE	L/ST	PR	Rim	SW (mm)	OD (mm)	Load Index (kg)	Max Pressure (Lbs)	Max Pressure Kpa/Psi	Sidewall	HP	UHP	A/S	EV	VAN	H/T	A/T	R/T	M/T	WINTER	STUDED	
195R14C	102/100R	8	5 1/2J	188	650	850/800	1874/1764	450/65	BSW	✓	✓	✓									
195R14C	106/104R	8	5 1/2J	198	666	950/900	2094/1984	450/65	BSW	✓	✓	✓									
195R15C	106/104R	8	5 1/2J	198	690	950/900	2094/1984	450/65	BSW	✓	✓	✓									
195/70R15C	104/102R	8	6J	201	655	900/850	1984/1874	450/65	BSW	✓	✓	✓									
205/65R15C	102/100R	6	6J	209	647	850/800	1874/1764	375/54	BSW	✓	✓	✓									
205/70R15C	106/104R	8	6J	209	669	950/900	2094/1984	450/65	BSW	✓	✓	✓									
215/65R15C	104/102R	6	6 1/2J	221	661	900/850	1984/1874	375/54	BSW	✓	✓	✓									
215/70R15C	109/107R	8	6 1/2J	221	683	1030/975	2271/2149	450/65	BSW	✓	✓	✓									
225/70R15C	112/110R	8	6 1/2J	228	697	1120/1060	2469/2337	450/65	BSW	✓	✓	✓									
185/75R16C	104/102R	8	5J	184	684	900/850	1984/1874	475/69	BSW	✓	✓	✓									
195/60R16C	99/87T	6	6J	201	640	775/730	1709/1609	375/54	BSW	✓	✓	✓									
195/65R16C	104/102R	8	6J	201	660	900/850	1984/1874	475/69	BSW	✓	✓	✓									
195/75R16C	107/105R	8	5 1/2J	196	698	975/925	2149/2039	475/69	BSW	✓	✓	✓									
205/65R16C	107/105R	8	6J	209	672	975/925	2149/2039	475/69	BSW	✓	✓	✓									
205/75R16C	113/111R	10	5 1/2J	203	714	1150/1090	2535/2403	525/76	BSW	✓	✓	✓									
215/60R16C	103/101T	6	6 1/2J	221	664	875/825	1929/1819	375/54	BSW	✓	✓	✓									
215/65R16C	109/107R	8	6 1/2J	221	686	1030/975	2271/2149	475/69	BSW	✓	✓	✓									
215/75R16C	116/114R	10	6J	216	728	1250/1180	2756/2601	525/76	BSW	✓	✓	✓									
225/65R16C	112/110R	8	6 1/2J	228	698	1120/1060	2469/2337	475/69	BSW	✓	✓	✓									
225/75R16C	121/120R	10	6J	223	744	1450/1400	3197/3086	575/83	BSW	✓	✓	✓									
235/65R16C	115/113R	8	7J	240	712	1215/1150	2679/2535	475/69	BSW	✓	✓	✓									
215/60R17C	109/107T	8	6 1/2J	221	690	1030/975	2271/2149	475/69	BSW	✓	✓	✓									

L-MAX 9

HP UHP A/S EV **VAN** H/T A/T R/T M/T WINTER STUDED



VAN

RANGE

14 - 17

ASPECT RATIO

60 - 75

SPEED SYMBOL

R - (T)

PLY RATING

6 - 10



**OPTIMIZED SIPE
STRUCTURE FOR
NOISE REDUCTION**



**BIO-MIMETIC
DESIGN**



**ZIGZAG GROOVE
DESIGN**



SIZE	LI/SI	PR	Rim	SW (mm)	OD (mm)	Load Index (kg)	(Lbs)	Max Pressure Kpa/Psi	Sidewall	0	0	0
185R14C	102/100R	8	5 1/2J	188	650	850/800	1875/1765	450/65	BSW	✓	✓	✓
185R14C	102/100R	8	5 1/2J	188	650	850/800	1875/1765	450/65	BSW	✓	✓	✓
195R14C	106/104R	8	5 1/2J	198	666	950/900	2094/1984	450/65	BSW	✓	✓	✓
195R14C	106/104R	8	5 1/2J	198	666	950/900	2094/1984	450/65	BSW	✓	✓	✓
205R14C	109/107R	8	6J	206	686	1030/975	2271/2150	450/65	BSW	✓	✓	✓
205/75R14C	109/107R	8	5 1/2J	203	664	1030/975	2271/2149	475/69	BSW	✓	✓	✓
215R14C	112/110R	8	6J	218	700	1120/1060	2469/2337	450/65	BSW	✓	✓	✓
215/75R14C	112/110R	8	6J	216	678	1120/1060	2469/2337	475/69	BSW	✓	✓	✓
165/70R14C	89/87R	6	5J	170	588	580/545	1279/1202	375/54	BSW	✓	✓	✓
175/65R14C	90/88R	6	5J	177	584	600/560	1323/1235	375/54	BSW	✓	✓	✓
185R15C	103/102R	8	5 1/2J	188	674	875/850	1929/1874	450/65	BSW	✓	✓	✓
195R15C	106/104R	8	5 1/2J	196	693	950/900	2094/1984	450/65	BSW	✓	✓	✓
195R15C	106/104R	8	5 1/2J	196	693	950/900	2094/1984	450/65	BSW	✓	✓	✓
195/70R15C	104/102R	8	6J	201	655	900/850	1984/1874	450/65	BSW	✓	✓	✓
205/70R15C	106/104R	8	6	209	669	950/900	2094/1984	450/65	BSW	✓	✓	✓
205/75R15C	109/107R	8	5 1/2J	203	689	1030/975	2271/2149	475/69	BSW	✓	✓	✓
215/65R15C	104/102R	6	6 1/2J	221	661	900/850	1984/1874	375/54	BSW	✓	✓	✓
215/70R15C	104/101R	8	6 1/2J	221	683	900/825	1984/1819	450/65	BSW	✓	✓	✓
225/70R15C	112/110R	8	6 1/2J	228	697	1120/1060	2469/2337	450/65	BSW	✓	✓	✓
175/75R16C	101/99R	8	5J	177	668	825/775	1819/1705	475/69	BSW	✓	✓	✓
195/60R16C	99/97T	6	6	201	640	775/730	1709/1609	375/54	BSW	✓	✓	✓
195/75R16C	107/105R	8	5 1/2J	196	698	975/925	2149/2039	475/69	BSW	✓	✓	✓
205/65R16C	107/105R	8	6J	209	672	975/925	2149/2039	475/69	BSW	✓	✓	✓
205/75R16C	110/108R	8	5 1/2J	203	714	1060/1000	2337/2204	475/69	BSW	✓	✓	✓
215/60R16C	103/101T	6	6 1/2J	221	664	875/825	1929/1819	375/54	BSW	✓	✓	✓
215/65R16C	109/107R	8	6 1/2J	221	686	1030/975	2271/2149	475/69	BSW	✓	✓	✓
215/70R16C	108/106R	6	6 1/2J	221	708	1000/950	2205/2094	375/54	BSW	✓	✓	✓
225/65R16C	112/110R	8	6 1/2J	228	698	1120/1060	2469/2337	475/69	BSW	✓	✓	✓
225/75R16C	116/114R	8	6J	223	744	1250/1180	2756/2601	475/69	BSW	✓	✓	✓
235/65R16C	115/113R	8	7J	240	712	1215/1150	2679/2535	475/69	BSW	✓	✓	✓
215/75R16C	116/114R	10	6J	216	728	1250/1180	2756/2601	525/76	BSW	✓	✓	✓
185/75R16C	104/102R	8	5J	184	684	900/850	1984/1874	475/69	BSW	✓	✓	✓
195/65R16C	104/102R	8	6J	201	660	900/850	1984/1874	475/69	BSW	✓	✓	✓
215/60R17C	109/107T	8	6 1/2J	221	690	1030/975	2271/2149	475/69	BSW	✓	✓	✓

L-POWER 28

HP UHP A/S EV **VAN** H/T A/T R/T M/T WINTER STUDED

ECONOMIC PERFORMANCE	(9/10)
COMFORT PERFORMANCE	(9/10)
TREADWEAR	(10/10)



VAN

RANGE

12 - 14

ASPECT RATIO

70 - 75

SPEED SYMBOL

Q - (T)

PLY RATING

6 - 10



ZIGZAG MAIN GROOVE DESIGN



3D MULTI-DIRECTIONAL SIPES DESIGN



IRREGULAR TREAD PATTERN

SIZE	LI/SI	PR	Rim	SW (mm)	OD (mm)	Load Index (kg)	Load Index (Lbs)	Max Pressure Kpa/Psi	Sidewall	0	0	0
145R12C	86/84Q	8	4.00B	145	537	530/500	1168/1102	450/65	BSW	✓	✓	✓
145R13C	88/86Q	8	4.00B	147	566	560/530	1235/1168	450/65	BSW	✓	✓	✓
165/70R13	79T	-	5.00B	170	562	437	964	300/44	BSW	✓	✓	✓
165/70R14	81T	-	5J	170	588	462	1019	300/44	BSW	✓	✓	✓
155R12LT/C	88/86S	8	4.50B	157	553	560/530	1235/1168	450/65	BSW	✓	✓	✓
155/70R12LT	104/102R	12	4.50B	157	523	900/850	1984/1874	650	BSW	✓	✓	✓
5.00R12LT	83/81Q	8	3.50B	143	568	487/462	1074/1019	450/65	BSW	✓	✓	✓
5.50R12LT	92/90Q	10	3.50B	160	595	630/600	1389/1323	560/81	BSW	✓	✓	✓
5.50R13LT	88/84Q	8	4.00B	160	620	560/500	1235/1102	460/67	BSW	✓	✓	✓
155R13LT/C	90/88Q	8	4.50B	157	578	600/560	1323/1235	450/65	BSW	✓	✓	✓
165R13LT	94/93R	8	4.50B	165	594	670/650	1477/1433	450/65	BSW	✓	✓	✓
165/70R13LT	88/86R	6	5.00B	170	562	560/530	1235/1168	375	BSW	✓	✓	✓
175R13LT	97/95R	8	5.00B	177	610	730/690	1609/1521	450/65	BSW	✓	✓	✓
165R14LT	91/90R	6	4 1/2J	165	620	615/600	1356/1323	350/51	BSW	✓	✓	✓
175R14LT	99/97R	8	5J	178	634	775/730	1709/1609	450/65	BSW	✓	✓	✓
175/70R14LT	95/93S	6	5J	177	602	690/650	1521/1433	375/54	BSW	✓	✓	✓
175/75R14LT	94/91R	8	5J	177	618	670/615	1477/1356	450/65	BSW	✓	✓	✓

TOURWAYS 52

HP UHP A/S EV **VAN** H/T A/T R/T M/T WINTER STUDED

LOAD	(10/10)
ECONOMIC PERFORMANCE	(10/10)
TREADWEAR	(9/10)



SIZE	LI/SI	PR	Rim	SW (mm)	OD (mm)	Load Index (kg)	Load Index (Lbs)	Max Pressure Kpa/Psi	Sidewall	0	0	0
7.00R16LT	115/110N	12	5.50F	200	775	1215/1060	2679/2337	670/97	BSW	✓	✓	✓
7.50R16LT	122/118N	14	6.00G	215	805	1500/1320	3307/2910	770/112	BSW	✓	✓	✓

VAN

RANGE

16 - 16

ASPECT RATIO

--- ---

SPEED SYMBOL

N - (N)

PLY RATING

12 - 14



HYDROPLANING RESISTANCE



EXCELLENT TREAD WEAR

POWERCITY 79

HP UHP A/S EV VAN **H/T** A/T R/T M/T WINTER STUDED



H/T

RANGE
16 - 20

ASPECT RATIO
50 - 70

SPEED SYMBOL
T - (V)

UTQG
420/A/A



EXCELLENT ALL-WEATHER PERFORMANCE



SHOULDER RIB DESIGN TO RESIST IRREGULAR WEAR



REINFORCED INTERNAL STRUCTURE AND PROPRIETARY WEAR-RESISTANT COMPOUND



SIZE	L/SI	Rim	SW (mm)	OD (mm)	Load Index (kg)	Load Index (Lbs)	Max Pressure Kpa/Psi	UTQG	Sidewall	HP	UHP	A/S	EV	VAN	H/T	A/T	R/T	M/T	WINTER	STUDED	
215/65R16	98H	6 1/2J	221	686	750	1653	300/44	420/A/A	BSW	✓	✓	✓									
215/70R16	100H	6 1/2J	221	708	800	1764	300/44	420/A/A	BSW	✓	✓	✓									
225/70R16	107H XL	6 1/2J	228	722	975	2149	340/50	420/A/A	BSW	✓	✓	✓									
235/60R16	100H	7J	240	688	800	1764	300/44	420/A/A	BSW	✓	✓	✓									
235/70R16	106H	7J	240	736	950	2094	300/44	420/A/A	BSW	✓	✓	✓									
245/70R16	111H XL	7J	248	750	1090	2403	340/50	420/A/A	BSW	✓	✓	✓									
255/65R16	109H	7 1/2J	260	738	1030	2271	300/44	420/A/A	BSW	✓	✓	✓									
255/70R16	111T	7 1/2J	260	764	1090	2403	300/44	420/A/A	BSW	✓	✓	✓									
265/70R16	112T	8J	272	778	1120	2469	300/44	420/A/B	BSW	✓	✓	✓									
275/70R16	114T	8J	279	792	1180	2601	300/44	420/A/B	BSW	✓	✓	✓									
215/60R17	96H	6 1/2J	221	690	710	1565	300/44	420/A/A	BSW	✓	✓	✓									
215/65R17	99V	6 1/2J	221	712	775	1709	300/44	420/A/A	BSW	✓	✓	✓									
225/60R17	99H	6 1/2J	228	702	775	1709	300/44	420/A/A	BSW	✓	✓	✓									
235/60R17	106H XL	7J	240	714	950	2094	340/50	420/A/A	BSW	✓	✓	✓									
235/65R17	102H	6 1/2J	228	724	850	1874	300/44	420/A/A	BSW	✓	✓	✓									
235/65R17	104H	7J	240	738	900	1984	300/44	420/A/A	BSW	✓	✓	✓									
245/65R17	111H XL	7J	248	750	1090	2403	340/50	420/A/A	BSW	✓	✓	✓									
245/70R17	114T XL	7J	248	776	1180	2601	340/50	420/A/A	BSW	✓	✓	✓									
255/60R17	110H XL	7 1/2J	260	738	1060	2337	340/50	420/A/A	BSW	✓	✓	✓									
255/65R17	110H	7 1/2J	260	764	1060	2337	300/44	420/A/A	BSW	✓	✓	✓									
265/65R17	112H	8J	272	776	1120	2469	300/44	420/A/B	BSW	✓	✓	✓									
265/70R17	115T	8J	272	804	1215	2679	300/44	420/A/B	BSW	✓	✓	✓									
275/65R17	115T	8J	279	790	1215	2679	300/44	420/A/B	BSW	✓	✓	✓									
285/65R17	116T	8 1/2J	292	802	1250	2756	300/44	420/A/B	BSW	✓	✓	✓									
225/55R18	98H	7J	233	705	750	1653	300/44	420/A/A	BSW	✓	✓	✓									
235/55R18	104H XL	7 1/2J	245	715	900	1984	340/50	420/A/A	BSW	✓	✓	✓									
225/60R18	104H XL	6 1/2J	228	727	900	1984	340/50	420/A/A	BSW	✓	✓	✓									
235/60R18	107H XL	7J	240	739	975	2149	340/50	420/A/A	BSW	✓	✓	✓									
235/65R18	110H XL	7J	240	763	1060	2337	340/50	420/A/A	BSW	✓	✓	✓									
245/60R18	105H	7J	248	751	925	2039	300/44	420/A/A	BSW	✓	✓	✓									
255/60R18	112H XL	7 1/2J	260	763	1120	2469	340/50	420/A/A	BSW	✓	✓	✓									
255/70R18	113T	7 1/2J	260	815	1150	2535	300/44	420/A/B	BSW	✓	✓	✓									
265/60R18	110H	8J	272	775	1060	2337	300/44	420/A/A	BSW	✓	✓	✓									
265/70R18	116T	8J	272	829	1250	2756	300/44	420/A/B	BSW	✓	✓	✓									
275/60R18	117H XL	8J	279	787	1285	2833	340/50	420/A/A	BSW	✓	✓	✓									
285/60R18	116H	8 1/2J	292	799	1250	2756	300/44	420/A/A	BSW	✓	✓	✓									
235/65R19	109H XL	7	240	789	1030	2271	340/50	420/A/A	BSW	✓	✓	✓									
245/55R19	107V XL	7 1/2J	253	753	975	2149	340/50	420/A/A	BSW	✓	✓	✓									
255/50R19	107V XL	8J	265	739	975	2149	340/50	420/A/A	BSW	✓	✓	✓									
255/55R19	111V XL	8J	265	763	1090	2403	340/50	420/A/A	BSW	✓	✓	✓									
235/60R19	107H XL	7J	240	765	975	2149	340/50	420/A/A	BSW	✓	✓	✓									
285/50R20	116V XL	9J	297	794	1250	2756	340/50	420/A/A	BSW	✓	✓	✓									

POWERCITY 77

HP UHP A/S EV VAN **H/T** A/T R/T M/T WINTER STUDED

WET HANDLING	(10/10)
PERFORMANCE SPORT	(9/10)
SILENT PERFORMANCE	(9/10)
ENERGY AND FUEL SAVING	(9/10)
TREADWEAR	(8/10)



H/T

RANGE

15 - 18

ASPECT RATIO

60 - 75

SPEED SYMBOL

T - (V)

UTQG

460/A/A



ALL SEASON TREAD DESIGN



SILENCE DESIGN



COORDINATED TREAD PATTERN



HIGH DENSITY GROOVES

SIZE	LI/SI	Rim	SW (mm)	OD (mm)	Load Index (kg)	Max Pressure Kpa/Psi	UTQG	Sidewall	0	0	0	
215/75R15	100H	6 J	216	703	800	1763	300/44	460/A/A	BSW	✓	✓	✓
225/75R15	102H	6 J	223	719	850	1873	300/44	460/A/A	BSW	✓	✓	✓
235/75R15	105H	6 1/2J	235	733	925	2039	300/44	460/A/A	BSW	✓	✓	✓
265/70R15	112T	8 J	272	753	1120	2469	300/44	460/A/A	BSW	✓	✓	✓
215/65R16	102H	6 1/2J	221	686	850	1873	340/50	460/A/A	BSW	✓	✓	✓
215/70R16	100H	6 1/2J	221	708	800	1763	300/44	460/A/A	BSW	✓	✓	✓
225/70R16	103H	6 1/2J	228	722	875	1929	300/44	460/A/A	BSW	✓	✓	✓
225/75R16	104T	6 J	223	744	900	1984	300/44	460/A/A	BSW	✓	✓	✓
235/70R16	106H	7 J	240	736	950	2094	300/44	460/A/A	BSW	✓	✓	✓
245/70R16	111H	7 J	248	750	1090	2403	340/50	460/A/A	BSW	✓	✓	✓
255/70R16	111H	7 1/2J	260	764	1090	2403	300/44	460/A/A	BSW	✓	✓	✓
265/70R16	112T	8 J	272	778	1120	2469	300/44	460/A/B	BSW	✓	✓	✓
265/75R16	116T	7 1/2J	267	804	1250	2755	300/44	460/A/B	BSW	✓	✓	✓
215/60R17	100H	6 1/2J	221	690	800	1763	340/50	460/A/A	BSW	✓	✓	✓
215/65R17	99V	6 1/2J	221	712	775	1708	300/44	460/A/A	BSW	✓	✓	✓
235/60R17	102H	7 J	240	714	850	1873	300/44	460/A/A	BSW	✓	✓	✓
235/65R17	108H	7 J	240	738	1000	2204	340/50	460/A/A	BSW	✓	✓	✓
235/70R17	107H	7 J	240	762	975	2149	300/44	460/A/A	BSW	✓	✓	✓
245/65R17	111H	7 J	248	750	1090	2403	340/50	460/A/A	BSW	✓	✓	✓
265/65R17	112H	8 J	272	776	1120	2469	300/44	460/A/A	BSW	✓	✓	✓
265/70R17	115H	8 J	272	804	1215	2678	300/44	460/A/B	BSW	✓	✓	✓
235/60R18	107H	7 J	240	739	975	2149	340/50	460/A/A	BSW	✓	✓	✓
245/60R18	105H	7 J	248	751	925	2039	300/44	460/A/A	BSW	✓	✓	✓
255/60R18	112H	7 1/2J	260	763	1120	2469	340/50	460/A/A	BSW	✓	✓	✓
265/60R18	114H	8 J	272	775	1180	2601	340/50	460/A/A	BSW	✓	✓	✓
275/65R18	116H	8 J	279	815	1250	2755	300/44	460/A/B	BSW	✓	✓	✓
255/55R19	111V	8 J	265	763	1090	2403	340/50	460/A/A	BSW	✓	✓	✓

L-FINDER 78

HP UHP A/S EV VAN **H/T** A/T R/T M/T WINTER STUDED

WET HANDLING	(9/10)
PERFORMANCE SPORT	(9/10)
SILENT PERFORMANCE	(9/10)
ENERGY AND FUEL SAVING	(9/10)
TREADWEAR	(10/10)

H/T

RANGE	15 - 18
ASPECT RATIO	60 - 85
SPEED SYMBOL	Q - (T)
UTQG	420/A/A
PLY RATING	6 - 10



SILENCE DESIGN



WIDE AND LARGE SHOULDER



CHANGEABLE GROOVES



OPTIMIZED MAIN GROOVES



SIZE	LI/SI	Rim	SW (mm)	OD (mm)	Load Index (kg)	Max Pressure (Lbs)	Max Pressure Kpa/Psi	UTQG	Sidewall	HP	UHP	A/S	EV	VAN	H/T	A/T	R/T	M/T	WINTER	STUDED	
P215/75R15	100T	6J	216	703	800	1764	300/44	420/A/A	BSW	✓	✓	✓									
P235/75R15	105T	6 1/2J	235	733	925	2039	300/44	420/A/A	BSW	✓	✓	✓									
P215/70R16	99T	6 1/2J	221	706	775	1709	300/44	420/A/A	BSW	✓	✓	✓									
P225/70R16	101T	6 1/2J	228	722	825	1819	300/44	420/A/A	BSW	✓	✓	✓									
P225/75R16	104T	6	223	744	900	1984	300/44	420/A/A	BSW	✓	✓	✓									
P235/70R16	107T	7	240	736	975	2149	340/50	420/A/A	BSW	✓	✓	✓									
P235/75R16	109T	6 1/2J	235	758	1030	2271	340/50	420/A/A	BSW	✓	✓	✓									
P245/70R16	106T	7	248	750	950	2094	300/44	420/A/A	BSW	✓	✓	✓									
P255/65R16	106T	7 1/2J	260	738	950	2094	300/44	420/A/A	BSW	✓	✓	✓									
P255/70R16	109T	7 1/2J	260	764	1030	2271	300/44	420/A/A	BSW	✓	✓	✓									
P265/70R16	111T	8J	272	778	1090	2403	300/44	420/A/A	BSW	✓	✓	✓									
P225/65R17	102T	6 1/2J	228	724	850	1874	300/44	420/A/A	BSW	✓	✓	✓									
P235/60R17	100T	7	240	714	800	1764	300/44	420/A/A	BSW	✓	✓	✓									
P235/65R17	103T	7	240	738	875	1929	300/44	420/A/A	BSW	✓	✓	✓									
P245/65R17	105T	7	248	750	925	2039	300/44	420/A/A	BSW	✓	✓	✓									
P265/70R17	113T	8J	272	804	1150	2535	300/44	420/A/A	BSW	✓	✓	✓									
P235/60R18	102T	7	240	739	850	1874	300/44	420/A/A	BSW	✓	✓	✓									
P235/65R18	104T	7	240	763	900	1984	300/44	420/A/A	BSW	✓	✓	✓									

SIZE	LI/SI	PR	Rim	SW (mm)	OD (mm)	Load Index (kg)	Max Pressure (Lbs)	Max Pressure Kpa/Psi	Sidewall	HP	UHP	A/S	EV	VAN	H/T	A/T	R/T	M/T	WINTER	STUDED	
LT225/75R16	115/112Q	10	6 J	223	744	1215/1120	2680/2470	550/80	BSW	✓	✓	✓									
LT235/85R16	120/116Q	10	6 1/2J	235	806	1380/1260	3042/2778	550/80	BSW	✓	✓	✓									
LT245/75R16	120/116Q	10	7 J	248	774	1380/1260	3042/2778	550/80	BSW	✓	✓	✓									
LT265/75R16	123/120Q	10	7 1/2J	267	804	1550/1400	3415/3085	550/80	BSW	✓	✓	✓									
LT235/80R17	120/117Q	10	6 1/2J	235	808	1400/1285	3085/2835	550/80	BSW	✓	✓	✓									
LT245/70R17	119/116Q	10	7 J	248	776	1360/1250	3000/2755	550/80	BSW	✓	✓	✓									
LT245/75R17	121/118Q	10	7 J	248	800	1450/1320	3195/2910	550/80	BSW	✓	✓	✓									
LT265/70R17	121/118Q	10	8 J	272	804	1450/1320	3195/2910	550/80	BSW	✓	✓	✓									
31*10.50R15LT	109Q	6	8 1/2J	268	775	1030	2270	350/50	BSW	✓	✓	✓									

IRONCLAD A/T

HP UHP A/S EV VAN H/T **A/T** R/T M/T WINTER STUDED

WINTER TRACTION	(9/10)
DRY HANDLING	(9/10)
WET HANDLING	(8/10)
SILENT PERFORMANCE	(9/10)
OFF-ROAD PERFORMANCE	(10/10)
TREADWEAR	(9/10)



A/T

RANGE

14 - 24

ASPECT RATIO

50 - 80

SPEED SYMBOL

Q - (H)

UTQG

460/A/A

PLY RATING

6 - 12



INTERACTIVE SELF-LOCKING BLOCK DESIGN



TRAPEZOIDAL STEEL SHEET DESIGN



CENTER AREA SELF-LOCKING ENHANCED DESIGN



TREAD GROOVE DESIGN WITH STONE-EJECTION CAPABILITY



DESIGN OF A NEW OFF-ROAD TIRE TREAD FORMULA

SIZE	L/Sl	Rim	SW (mm)	OD (mm)	Load Index (kg)	(Lbs)	Max Pressure Kpa/Psi	UTQG	Sidewall	HP	UHP	A/S	EV	VAN	H/T	A/T	R/T	M/T	WINTER	STUDED	
P205/70R15	96T	6J	209	669	710	1565	300/44	460/A/A	RWL	✓	✓	✓	✓	✓	✓	✓	✓	✓	✓	✓	✓
P215/75R15	100S	6J	216	703	800	1764	300/44	460/A/A	RWL	✓	✓	✓	✓	✓	✓	✓	✓	✓	✓	✓	✓
P235/75R15	105T	6 1/2J	235	733	925	2039	300/44	460/A/A	RWL	✓	✓	✓	✓	✓	✓	✓	✓	✓	✓	✓	✓
235/80R16	100H	7J	240	688	800	1764	300/44	460/A/A	RWL	✓	✓	✓	✓	✓	✓	✓	✓	✓	✓	✓	✓
P215/70R16	99T	6 1/2J	221	708	775	1709	300/44	460/A/A	RWL	✓	✓	✓	✓	✓	✓	✓	✓	✓	✓	✓	✓
P225/70R16	101T	6 1/2J	228	722	825	1819	300/44	460/A/A	RWL	✓	✓	✓	✓	✓	✓	✓	✓	✓	✓	✓	✓
P235/70R16	104S	7J	240	736	900	1984	300/44	460/A/A	RWL	✓	✓	✓	✓	✓	✓	✓	✓	✓	✓	✓	✓
P235/75R16	109T XL	6 1/2J	235	758	1030	2271	340/50	460/A/A	RWL	✓	✓	✓	✓	✓	✓	✓	✓	✓	✓	✓	✓
P245/70R16	111T XL	7J	248	750	1090	2403	340/50	460/A/A	RWL	✓	✓	✓	✓	✓	✓	✓	✓	✓	✓	✓	✓
P245/75R16	111T	7J	248	774	1090	2403	300/44	460/A/A	RWL	✓	✓	✓	✓	✓	✓	✓	✓	✓	✓	✓	✓
P225/60R17	103H XL	6 1/2J	228	702	875	1929	340/50	460/A/A	RWL	✓	✓	✓	✓	✓	✓	✓	✓	✓	✓	✓	✓
P225/65R17	102T	6 1/2J	228	724	850	1874	300/44	460/A/A	RWL	✓	✓	✓	✓	✓	✓	✓	✓	✓	✓	✓	✓
P235/60R17	106H XL	7J	240	714	950	2094	340/50	460/A/A	RWL	✓	✓	✓	✓	✓	✓	✓	✓	✓	✓	✓	✓
P235/65R17	108T XL	7J	240	738	1000	2205	340/50	460/A/A	RWL	✓	✓	✓	✓	✓	✓	✓	✓	✓	✓	✓	✓
P245/65R17	111T XL	7J	248	750	1090	2403	340/50	460/A/A	RWL	✓	✓	✓	✓	✓	✓	✓	✓	✓	✓	✓	✓
215/55R18	99H XL	7J	226	693	775	1709	340/50	460/A/A	RWL	✓	✓	✓	✓	✓	✓	✓	✓	✓	✓	✓	✓
P225/60R18	104T XL	6 1/2J	228	727	900	1984	340/50	460/A/A	RWL	✓	✓	✓	✓	✓	✓	✓	✓	✓	✓	✓	✓
P235/60R18	103T	7J	240	739	875	1929	300/44	460/A/A	RWL	✓	✓	✓	✓	✓	✓	✓	✓	✓	✓	✓	✓
P235/65R18	106T	7J	240	763	950	2094	300/44	460/A/A	RWL	✓	✓	✓	✓	✓	✓	✓	✓	✓	✓	✓	✓
P245/60R18	105T	7J	248	751	925	2039	300/44	460/A/A	RWL	✓	✓	✓	✓	✓	✓	✓	✓	✓	✓	✓	✓
P235/60R19	107T XL	7J	240	765	975	2149	340/50	460/A/A	RWL	✓	✓	✓	✓	✓	✓	✓	✓	✓	✓	✓	✓
P245/55R19	107H XL	7 1/2J	253	763	975	2149	340/50	460/A/A	RWL	✓	✓	✓	✓	✓	✓	✓	✓	✓	✓	✓	✓
245/50R20	105H XL	7 1/2J	253	754	925	2039	340/50	460/A/A	RWL	✓	✓	✓	✓	✓	✓	✓	✓	✓	✓	✓	✓
P255/70R16	111T	7 1/2J	260	764	1090	2403	300/44	460/A/B	RWL	✓	✓	✓	✓	✓	✓	✓	✓	✓	✓	✓	✓
P265/70R16	111T	8J	272	778	1090	2403	300/44	460/A/B	RWL	✓	✓	✓	✓	✓	✓	✓	✓	✓	✓	✓	✓
P275/70R16	114T	8J	279	792	1180	2601	300/44	460/A/B	RWL	✓	✓	✓	✓	✓	✓	✓	✓	✓	✓	✓	✓
P255/65R17	114H XL	7 1/2J	260	764	1180	2601	340/50	460/A/B	RWL	✓	✓	✓	✓	✓	✓	✓	✓	✓	✓	✓	✓
P265/65R17	112S	8J	272	776	1120	2469	300/44	460/A/B	RWL	✓	✓	✓	✓	✓	✓	✓	✓	✓	✓	✓	✓
P265/70R17	115T	8J	272	804	1215	2679	300/44	460/A/B	RWL	✓	✓	✓	✓	✓	✓	✓	✓	✓	✓	✓	✓
P275/65R17	115T	8J	279	790	1215	2679	300/44	460/A/B	RWL	✓	✓	✓	✓	✓	✓	✓	✓	✓	✓	✓	✓
P285/65R17	116T	8 1/2J	292	802	1250	2756	300/44	460/A/B	RWL	✓	✓	✓	✓	✓	✓	✓	✓	✓	✓	✓	✓
P255/60R18	112H XL	7 1/2J	260	763	1120	2469	340/50	460/A/B	RWL	✓	✓	✓	✓	✓	✓	✓	✓	✓	✓	✓	✓
P265/60R18	114H XL	8J	272	775	1180	2601	340/50	460/A/B	RWL	✓	✓	✓	✓	✓	✓	✓	✓	✓	✓	✓	✓
P265/65R18	114T	8J	272	801	1180	2601	300/44	460/A/B	RWL	✓	✓	✓	✓	✓	✓	✓	✓	✓	✓	✓	✓
P265/70R18	116T	8J	272	829	1250	2756	300/44	460/A/B	RWL	✓	✓	✓	✓	✓	✓	✓	✓	✓	✓	✓	✓
P275/65R18	116T	8J	279	815	1250	2756	300/44	460/A/B	RWL	✓	✓	✓	✓	✓	✓	✓	✓	✓	✓	✓	✓
P285/60R18	116T	8 1/2J	292	799	1250	2756	300/44	460/A/B	RWL	✓	✓	✓	✓	✓	✓	✓	✓	✓	✓	✓	✓
P285/65R18	116T	8 1/2J	292	827	1250	2756	300/44	460/A/B	RWL	✓	✓	✓	✓	✓	✓	✓	✓	✓	✓	✓	✓
275/55R19	111H	8 1/2J	284	785	1090	2403	300/44	460/A/B	RWL	✓	✓	✓	✓	✓	✓	✓	✓	✓	✓	✓	✓
P255/55R19	111H XL	8J	265	763	1090	2403	340/50	460/A/B	RWL	✓	✓	✓	✓	✓	✓	✓	✓	✓	✓	✓	✓
P255/60R19	113T XL	7 1/2J	260	789	1150	2535	340/50	460/A/B	RWL	✓	✓	✓	✓	✓	✓	✓	✓	✓	✓	✓	✓
P265/55R19	113H XL	8 1/2J	277	775	1150	2535	340/50	460/A/B	RWL	✓	✓	✓	✓	✓	✓	✓	✓	✓	✓	✓	✓
P265/50R20	107T	8 1/2J	277	774	975	2149	300/44	460/A/B	RWL	✓	✓	✓	✓	✓	✓	✓	✓	✓	✓	✓	✓
P265/55R20	113H XL	8 1/2J	277	800	1150	2535	340/50	460/A/B	RWL	✓	✓	✓	✓	✓	✓	✓	✓	✓	✓	✓	✓
P275/55R20	117S XL	8 1/2J	284	810	1285	2833	340/50	460/A/B	RWL	✓	✓	✓	✓	✓	✓	✓	✓	✓	✓	✓	✓
P275/60R20	116T	8J	279	838	1215	2679	300/44	460/A/B	RWL	✓	✓	✓	✓	✓	✓	✓	✓	✓	✓	✓	✓
P285/50R20	116T XL	9J	297	794	1250	2756	340/50	460/A/B	RWL	✓	✓	✓	✓	✓	✓	✓	✓	✓	✓	✓	✓
P285/55R20	119S XL	9J	297	822	1360	2998	340/50	460/A/B	RWL	✓	✓	✓	✓	✓	✓	✓	✓	✓	✓	✓	✓
275/40R22	107T XL	9 1/2J	278	779	975	2149	340/50	460/A/B	RWL	✓	✓	✓	✓	✓	✓	✓	✓	✓	✓	✓	✓
275/50R22	115T XL	8 1/2J	284	835	1215	2679	340/50	460/A/B	RWL	✓	✓	✓	✓	✓	✓	✓	✓	✓	✓	✓	✓

ALWAYS WITH YOU

Tire Direct
La nueva generación

* NEW DEVELOPING SIZES / THE LABELING INFORMATION ARE SUBJECT TO CHANGE WITHOUT NOTICE

SIZE	LI/SI	PR	Rim	SW (mm)	OD (mm)	Load Index (kg)	Max Pressure (Kpa/Psi)	Sidewall		
255/70R15C	112/110S	6	7 1/2J	260	739	1120/1060	2470/2335	375/54	RWL	✓ ✓ ✓
LT205/70R15	96/93S	6	6J	209	669	710/650	1565/1435	350/50	RWL	✓ ✓ ✓
LT215/70R15	104/101S	8	6 1/2J	221	683	900/825	1985/1820	450/65	RWL	✓ ✓ ✓
LT215/75R15	100/97R	6	6J	216	703	800/730	1765/1610	350/50	RWL	✓ ✓ ✓
LT235/75R15	104/101R	6	6 1/2J	235	733	900/825	1985/1820	350/50	RWL	✓ ✓ ✓
LT225/75R16	115/112R	10	6J	223	744	1215/1120	2680/2470	550/80	RWL	✓ ✓ ✓
LT235/70R16	110/107S	8	7J	240	736	1060/975	2335/2150	450/65	RWL	✓ ✓ ✓
LT235/85R16	120/116R	10	6 1/2J	235	806	1380/1260	3042/2778	550/80	RWL	✓ ✓ ✓
LT245/70R16	113/110S	8	7J	248	750	1150/1060	2535/2335	450/65	RWL	✓ ✓ ✓
LT245/75R16	120/116R	10	7J	248	774	1380/1260	3042/2778	550/80	RWL	✓ ✓ ✓
LT265/70R16	121/118R	10	8J	272	778	1450/1320	3195/2910	550/80	RWL	✓ ✓ ✓
LT265/75R16	123/120S	10	7 1/2J	267	804	1550/1400	3415/3085	550/80	RWL	✓ ✓ ✓
LT285/75R16	126/123R	10	8J	286	834	1700/1550	3750/3415	550/80	RWL	✓ ✓ ✓
LT225/65R17	107/103S	8	6 1/2J	228	724	975/875	2150/1930	450/65	RWL	✓ ✓ ✓
LT245/65R17	111/108S	8	7J	248	750	1090/1000	2405/2205	450/65	RWL	✓ ✓ ✓
LT245/70R17	119/116S	10	7J	248	776	1360/1250	3000/2755	550/80	RWL	✓ ✓ ✓
LT245/75R17	121/118S	10	7J	248	800	1450/1320	3195/2910	550/80	RWL	✓ ✓ ✓
LT265/65R17	120/117S	10	8J	272	776	1400/1285	3085/2835	550/80	RWL	✓ ✓ ✓
LT265/70R17	123/120R	10	8J	272	804	1550/1400	3415/3085	550/80	RWL	✓ ✓ ✓
LT275/65R17	121/118S	10	8J	279	790	1450/1320	3195/2910	550/80	RWL	✓ ✓ ✓
LT275/70R17	120/117S	8	8J	279	818	1400/1285	3085/2835	450/65	RWL	✓ ✓ ✓
LT285/65R17	121/118S	10	8 1/2J	292	802	1450/1320	3195/2910	550/80	RWL	✓ ✓ ✓
LT285/70R17	122/119S	8	8 1/2J	292	832	1500/1360	3305/3000	450/65	RWL	✓ ✓ ✓
LT305/70R17	125/122S	10	9J	311	860	1650/1500	3640/3305	450/65	RWL	✓ ✓ ✓
LT315/70R17	121/118S	8	9 1/2J	323	874	1450/1320	3195/2910	350/50	RWL	✓ ✓ ✓
LT225/55R18	108/105S	8	7J	233	705	1000/925	2205/2040	450/65	RWL	✓ ✓ ✓
LT235/60R18	108/104S	8	7J	240	739	1000/900	2205/1985	450/65	RWL	✓ ✓ ✓
LT235/65R18	110/107S	8	7J	240	763	1060/975	2335/2150	450/65	RWL	✓ ✓ ✓
LT245/60R18	110/107S	8	7J	248	751	1060/975	2335/2150	450/65	RWL	✓ ✓ ✓
LT255/60R18	112/109S	8	7 1/2J	260	763	1120/1030	2470/2270	450/65	RWL	✓ ✓ ✓
LT255/70R18	122/119Q	10	7 1/2J	260	815	1500/1360	3305/3000	550/80	RWL	✓ ✓ ✓
LT265/60R18	114/110S	8	8J	272	775	1180/1060	2600/2335	450/65	RWL	✓ ✓ ✓
LT265/65R18	122/119S	10	8J	272	801	1500/1360	3305/3000	550/80	RWL	✓ ✓ ✓
LT265/70R18	124/121S	10	8J	272	829	1600/1450	3525/3195	550/80	RWL	✓ ✓ ✓
LT275/65R18	123/120S	10	8J	279	815	1550/1400	3415/3085	550/80	RWL	✓ ✓ ✓
LT275/70R18	125/122S	10	8J	279	843	1650/1500	3640/3305	550/80	RWL	✓ ✓ ✓
LT285/60R18	118/115S	8	8 1/2J	292	799	1320/1215	2910/2680	450/65	RWL	✓ ✓ ✓
LT285/65R18	125/122S	10	8 1/2J	292	827	1650/1500	3640/3305	550/80	RWL	✓ ✓ ✓
LT235/55R19	111/108S	10	7 1/2J	245	741	1090/1000	2405/2205	550/80	RWL	✓ ✓ ✓
LT235/65R19	117/114S	10	7J	240	789	1285/1180	2835/2600	550/80	RWL	✓ ✓ ✓

SIZE	LI/SI	PR	Rim	SW (mm)	OD (mm)	Load Index (kg)	Max Pressure (Kpa/Psi)	Sidewall		
LT245/55R19	110/107S	8	7 1/2J	253	753	1060/975	2335/2150	450/65	RWL	✓ ✓ ✓
LT255/50R19	113/110S	8	8J	265	739	1150/1060	2535/2335	450/65	RWL	✓ ✓ ✓
LT255/55R19	115/112S	10	8J	265	763	1215/1120	2680/2470	550/80	RWL	✓ ✓ ✓
LT265/55R19	114/110Q	0	8 1/2J	277	775	1180/1060	2600/2335	550/80	RWL	✓ ✓ ✓
LT275/55R19	119/116S	10	8 1/2J	284	785	1360/1250	3000/2755	550/80	RWL	✓ ✓ ✓
LT245/50R20	108/104S	8	7 1/2J	253	754	1000/900	2205/1985	450/65	RWL	✓ ✓ ✓
LT255/55R20	117/114S	10	8J	265	788	1285/1180	2835/2600	550/80	RWL	✓ ✓ ✓
LT255/60R20	115/112S	8	7 1/2J	260	814	1215/1120	2680/2470	450/65	RWL	✓ ✓ ✓
LT265/50R20	115/112S	10	8 1/2J	277	774	1215/1120	2680/2470	550/80	RWL	✓ ✓ ✓
LT265/55R20	119/116S	10	8 1/2J	277	800	1360/1250	3000/2755	550/80	RWL	✓ ✓ ✓
LT275/50R20	116/113Q	10	8 1/2J	284	784	1250/1150	2755/2535	550/80	RWL	✓ ✓ ✓
LT275/55R20	120/117S	10	8 1/2J	284	810	1400/1285	3085/2835	550/80	RWL	✓ ✓ ✓
LT275/60R20	119/116S	8	8J	279	838	1360/1250	3000/2755	450/65	RWL	✓ ✓ ✓
LT275/65R20	126/123S	10	8J	279	866	1700/1550	3750/3415	550/80	RWL	✓ ✓ ✓
LT285/50R20	119/116S	10	9J	297	794	1360/1250	3000/2755	550/80	RWL	✓ ✓ ✓
LT285/55R20	122/119S	10	9J	297	822	1500/1360	3305/3000	550/80	RWL	✓ ✓ ✓
LT275/45R21	118/115S	12	9J	273	781	1320/1215	2910/2680	650/94	RWL	✓ ✓ ✓
LT275/50R21	122/119S	12	8 1/2J	284	809	1500/1360	3305/3000	650/94	RWL	✓ ✓ ✓
LT275/55R22	119/116S	10	8 1/2J	284	835	1360/1250	3000/2755	550/80	RWL	✓ ✓ ✓
LT285/45R22	116/113S	10	9 1/2J	285	815	1250/1150	2755/2535	550/80	RWL	✓ ✓ ✓
31x10.50R15LT	109S	6	8 1/2J	268	775	1030	2270	350/50	RWL	✓ ✓ ✓
33x12.50R17LT	120S	10	10J	318	826	1400	3085	450/65	RWL	✓ ✓ ✓
35x12.50R17LT	125S	10	10J	318	877	1650	3640	450/65	RWL	✓ ✓ ✓
33x12.50R18LT	118S	10	10J	318	826	1320	2910	450/65	RWL	✓ ✓ ✓
35x12.50R18LT	123S	10	10J	318	877	1650	3415	450/65	RWL	✓ ✓ ✓
33x12.50R20LT	114S	10	10J	318	826	1180	2600	450/65	RWL	✓ ✓ ✓
35x12.50R20LT	121S	10	10J	318	877	1450	3195	450/65	RWL	✓ ✓ ✓
33x12.50R22LT	109S	10	10 1/2J	318	826	1030	2270	450/65	RWL	✓ ✓ ✓
35x12.50R22LT	117S	10	10J	318	877	1285	2835	450/65	RWL	✓ ✓ ✓

TERRAMAX LSR1 A/T

HP UHP A/S EV VAN H/T **A/T** R/T M/T WINTER STUDED



A/T

RANGE

15 - 17

ASPECT RATIO

50 - 75

SPEED SYMBOL

Q - (T)

UTQG

460/A/A

PLY RATING

6 - 10



ALL-TERRAIN TREAD DESIGN



SERRATED STEEL BLADE DESIGN



CUT-RESISTANT COMPOUND FORMULATION

SIZE	LI/SI	Rim	SW (mm)	OD (mm)	Load Index (kg)	Load Index (Lbs)	Max Pressure Kpa/Psi	UTQG	Sidewall	HP	UHP	A/S	EV	VAN	H/T	A/T	R/T	M/T	WINTER	STUDED	
235/75R15	109S XL	7 J	235	733	1030	2271	340/50	460/A/A	BSW	✓	✓	✓									
235/70R16	106T	6 1/2J	240	736	950	2094	300/44	460/A/A	BSW	✓	✓	✓									
245/70R16	107T	7 J	248	750	975	2149	300/44	460/A/A	BSW	✓	✓	✓									
265/70R16	112T	7 J	272	778	1120	2469	300/44	460/A/A	BSW	✓	✓	✓									
235/65R17	104T	8 J	240	738	900	1984	300/44	460/A/A	BSW	✓	✓	✓									
245/65R17	107S	7 J	248	750	975	2149	300/44	460/A/A	BSW	✓	✓	✓									
265/70R17	115S	7 J	272	804	1215	2679	300/44	460/A/A	BSW	✓	✓	✓									

SIZE	LI/SI	PR	Rim	SW (mm)	OD (mm)	Load Index (kg)	Load Index (Lbs)	Max Pressure Kpa/Psi	Sidewall	HP	UHP	A/S	EV	VAN	H/T	A/T	R/T	M/T	WINTER	STUDED	
LT225/75R16	115/112Q	10	6 J	223	744	1215/1120	2470/2680	550/80	BSW	✓	✓	✓									
LT235/85R16	120/116Q	10	6 1/2J	235	806	1380/1260	3042/2778	550/80	BSW	✓	✓	✓									
LT245/75R16	120/116Q	10	7 J	248	774	1380/1260	3042/2778	550/80	BSW	✓	✓	✓									
LT265/70R17	121/118R	10	8 J	272	804	1450/1320	3195/2910	550/80	BSW	✓	✓	✓									
31X10.50R15LT	109S	6	8 1/2J	268	775	1030	2270	350/50	BSW	✓	✓	✓									

TERRAMAX LSR2 A/T

HP UHP A/S EV VAN H/T **A/T** R/T M/T WINTER STUDED



A/T

RANGE

13 - 20

ASPECT RATIO

50 - 85

SPEED SYMBOL

Q - (H)

UTQG

460/A/A

PLY RATING

6 - 10



AGGRESSIVE SIDEWALL TREAD DESIGN AND OPTIMIZED OPEN SHOULDER BLOCK PATTERN



CUT-RESISTANT TREAD COMPOUND WITH WIDE TREAD PATTERN



DEEP GROOVES WITH STONE EJECTOR DESIGN



SERRATED STEEL BLADE DESIGN



SIZE	LI/SI	Rim	SW (mm)	OD (mm)	Load Index (kg)	Max Pressure Kpa/Psi	UTQG	Sidewall	Icons	
175/75R13	84T	5.00B	177	593	500	1102	300/44	400/A/A	BSW	✓ ✓ ✓
175/75R14	86T	5J	177	618	530	1168	300/44	400/A/A	BSW	✓ ✓ ✓
205/60R15	91H	6J	209	627	615	1356	300/44	400/A/A	BSW	✓ ✓ ✓
205/65R15	94H	6J	209	647	670	1477	300/44	400/A/A	BSW	✓ ✓ ✓
P205/70R15	96H	6J	209	669	710	1565	300/44	400/A/A	BSW/WSW	✓ ✓ ✓
205/60R16	92H	6J	209	652	630	1389	300/44	400/A/A	BSW	✓ ✓ ✓
215/65R16	98T	6 1/2J	221	686	750	1653	300/44	400/A/A	BSW	✓ ✓ ✓
225/70R16	103T	6 1/2J	228	722	875	1929	300/44	400/A/A	BSW	✓ ✓ ✓
245/75R16	111T	7J	248	774	1090	2403	300/44	400/A/A	WSW	✓ ✓ ✓
255/70R16	111T	7 1/2J	260	764	1090	2403	300/44	400/A/A	WSW	✓ ✓ ✓
265/70R16	112T	8 J	272	778	1120	2469	300/44	460/A/B	BSW	✓ ✓ ✓
215/65R17	99T	6 1/2J	221	712	775	1708	300/44	400/A/A	BSW	✓ ✓ ✓
225/60R17	99H	6 1/2J	228	702	775	1708	300/44	400/A/A	BSW	✓ ✓ ✓
265/65R17	112T	8 J	272	776	1120	2469	300/44	460/A/B	BSW/WSW	✓ ✓ ✓
265/70R17	115S	8 J	272	804	1215	2679	300/44	460/A/B	BSW	✓ ✓ ✓
275/65R17	115T	8J	279	790	1215	2679	300/44	400/A/B	WSW	✓ ✓ ✓
285/65R17	116T	8 1/2J	292	802	1250	2755	300/44	400/A/B	WSW	✓ ✓ ✓
255/60R18	112T	7 1/2J	260	763	1120	2469	340/50	400/A/A	BSW	✓ ✓ ✓
265/60R18	110T	8 J	272	775	1060	2336	300/44	400/A/A	BSW/WSW	✓ ✓ ✓
275/65R18	116T	8 J	279	815	1250	2755	300/44	400/A/B	BSW	✓ ✓ ✓
285/60R18	120S XL	8 1/2J	292	799	1400	3086	340/50	460/A/A	BSW	✓ ✓ ✓
305/60R18	120S	9 J	311	823	1400	3086	300/44	460/A/A	BSW	✓ ✓ ✓
265/50R20	111S XL	8 1/2J	277	774	1090	2403	340/50	400/A/A	BSW/WSW	✓ ✓ ✓
275/55R20	117S XL	8 1/2J	284	810	1285	2833	340/50	400/A/A	BSW	✓ ✓ ✓
285/50R20	116TXL	9	297	794	1250	2756	340/50	400/A/A	BSW	✓ ✓ ✓
285/55R20	119S XL	9 J	297	822	1360	2998	340/50	400/A/A	BSW	✓ ✓ ✓
305/50R20	120S XL	9 1/2J	316	814	1400	3086	340/50	400/A/A	BSW	✓ ✓ ✓

SIZE	LI/SI	PR	Rim	SW (mm)	OD (mm)	Load Index (kg)	Max Pressure (Lbs)	Max Pressure Kpa/Psi	Sidewall			
215R15C	112/110S	8	6J	218	725	1120/1060	2469/2337	450/65	BSW	✓	✓	✓
245/75R15C	109/107S	6	7J	248	749	1030/975	2271/2149	375/54	BSW	✓	✓	✓
255/70R15C	112/110S	6	7 1/2J	260	739	1120/1060	2469/2337	375/54	BSW	✓	✓	✓
185/75R16C	104/102R	8	5J	184	684	900/850	1984/1874	475/69	BSW	✓	✓	✓
205R16C	110/108S	8	6J	208	736	1060/1000	2337/2205	450/65	WSW	✓	✓	✓
LT215/75R15	100/97Q	6	6J	216	703	800/730	1765/1610	350/50	WSW	✓	✓	✓
LT235/75R15	104/101S	6	6 1/2J	235	733	900/825	1985/1820	350/50	WSW	✓	✓	✓
LT215/85R16	115/112Q	10	6J	216	772	1215/1120	2679/2469	575/84	WSW	✓	✓	✓
LT245/70R16	113/110S	8	7J	248	750	1150/1060	2535/2335	450/65	WSW	✓	✓	✓
LT265/70R16	121/118S	10	8J	272	778	1450/1320	3195/2910	550/80	WSW	✓	✓	✓
LT265/75R16	123/120Q	10	7 1/2J	267	804	1550/1400	3415/3085	550/80	BSW	✓	✓	✓
LT285/75R16	126/123Q	10	8 J	286	834	1700/1550	3750/3415	550/80	BSW	✓	✓	✓
LT245/65R17	111/108R	8	7J	248	750	1090/1000	2403/2205	450/65	WSW	✓	✓	✓
LT245/70R17	119/116S	10	7J	248	776	1360/1250	3000/2755	550/80	WSW	✓	✓	✓
LT245/75R17	121/118S	10	7J	248	800	1450/1320	3195/2910	550/80	WSW	✓	✓	✓
LT285/70R17	121/118Q	10	8 1/2J	292	832	1450/1320	3195/2910	550/80	BSW/WSW	✓	✓	✓
LT285/60R18	122/119Q	10	8 1/2J	292	799	1500/1360	3305/3000	550/80	BSW	✓	✓	✓
LT285/65R18	125/122R	10	8 1/2J	292	827	1650/1500	3640/3305	550/80	WSW	✓	✓	✓
LT325/60R18	124/121Q	10	9 1/2J	331	847	1600/1450	3525/3195	450/65	BSW	✓	✓	✓
LT325/65R18	127/124Q	10	9 1/2J	331	879	1750/1600	3860/3525	450/65	BSW	✓	✓	✓
31X10.50R15LT	109S	6	8 1/2J	268	775	1030	2270	350/50	WSW	✓	✓	✓

PENTERRA R/T

HP UHP A/S EV VAN H/T A/T **R/T** M/T WINTER STUDED

PERFORMANCE SPORT	(10/10)
DRY GRIP	(9/10)
WET GRIP	(9/10)
SILENT PERFORMANCE	(7/10)
TREADWEAR	(8/10)

R/T

RANGE

15 - 22

ASPECT RATIO

50 - 75

SPEED SYMBOL

Q - (T)

UTQG

560/A/A

PLY RATING

6 - 10



OPEN SHOULDER & SELF-CLEANING DESIGN



INTERLOCKING SHOULDER DESIGN



DUAL SHOULDER CONTOUR DESIGN



LARGE SHOULDER BLOCKS WITH SMALL CENTER BLOCKS DESIGN



VARIABLE PITCH WITH RANDOM SEQUENCE DESIGN

SIZE	LI/SI	Rim	SW (mm)	OD (mm)	Load Index (Lbs)	Max Pressure Kpa/Psi	UTQG	Sidewall	HP	UHP	A/S	EV	VAN	H/T	A/T	R/T	M/T	WINTER	STUDED	
235/75R15	109Q XL	6 1/2J	235	733	1030	2271	340/50	560/A/B	WSW	✓	✓	✓								
235/70R16	109Q XL	7 J	240	736	1030	2271	340/50	560/A/B	WSW	✓	✓	✓								
245/75R16	111Q	7 J	248	774	1090	2403	300/44	560/A/B	WSW	✓	✓	✓								
255/70R16	111Q	7 1/2J	260	764	1090	2403	300/44	560/A/B	WSW	✓	✓	✓								
265/70R16	116Q XL	8J	272	778	1250	2756	340/50	560/A/B	WSW	✓	✓	✓								
265/65R17	116Q XL	8J	272	776	1250	2756	340/50	560/A/B	WSW	✓	✓	✓								
265/70R17	115Q	8 J	272	804	1215	2679	300/44	560/A/B	WSW	✓	✓	✓								
265/60R18	114Q XL	8J	272	775	1180	2601	340/50	560/A/B	WSW	✓	✓	✓								
265/65R18	116Q XL	8J	272	801	1250	2756	340/50	560/A/B	WSW	✓	✓	✓								
275/65R18	116Q XL	8J	279	815	1250	2756	340/50	560/A/B	WSW	✓	✓	✓								
265/60R20	111Q XL	8 1/2J	277	774	1090	2403	340/50	560/A/B	WSW	✓	✓	✓								
275/60R20	116Q XL	8J	279	838	1250	2756	340/50	560/A/B	WSW	✓	✓	✓								
285/45R22	114Q XL	9 1/2J	285	815	1180	2601	340/50	560/A/B	WSW	✓	✓	✓								

SIZE	LI/SI	PR	Rim	SW (mm)	OD (mm)	Load Index (Lbs)	Max Pressure Kpa/Psi	Sidewall	HP	UHP	A/S	EV	VAN	H/T	A/T	R/T	M/T	WINTER	STUDED		
LT245/75R16	120/116Q	10	7 J	248	774	1380/1260	3042/2778	550/80	WSW											POR	
LT265/75R16	119/116Q	8	7 1/2J	267	804	1360/1250	3000/2755	450/65	WSW												POR
LT285/75R16	116/113Q	6	8 J	286	834	1250/1150	2755/2535	350/50	WSW												POR
LT265/70R17	118/115Q	8	8 J	272	804	1320/1215	2910/2680	450/65	WSW												POR
LT285/70R17	116/113Q	6	8 1/2J	292	832	1250/1150	2755/2535	350/50	WSW												POR
LT285/65R18	121/118Q	8	8 1/2J	292	827	1450/1320	3195/2910	450/65	WSW												POR
LT285/55R20	117/114Q	8	9J	297	822	1285/1180	2835/2600	450/65	WSW												POR
27X8.50R14LT	95Q	6	7J	218	674	690	1520	350/50	WSW												POR
31X10.50R15LT	109Q	6	8 1/2J	268	775	1030	2270	350/50	WSW												POR
33X12.50R15LT	108Q	6	10J	318	826	1000	2205	250/35	WSW												POR
35X12.50R17LT	121Q	10	10J	318	877	1450	3195	450/65	WSW												POR
33X12.50R18LT	118Q	10	10J	318	826	1320	2910	450/65	WSW												POR
35X12.50R18LT	118Q	8	10J	318	877	1320	2910	350/50	WSW												POR
33X12.50R20LT	114Q	10	10J	318	826	1180	2600	450/65	WSW												POR
35X12.50R20LT	121Q	10	10J	318	877	1450	3195	450/65	WSW												POR
33X12.50R22LT	109Q	10	10J	318	826	1030	2270	450/65	WSW												POR
35X12.50R22LT	117Q	10	10J	318	877	1285	2835	450/65	WSW												POR

WILDWOLF M/T

HP UHP A/S EV VAN H/T A/T R/T **M/T** WINTER STUDED

OFF-ROAD MUD PERFORMANCE	(9/10)
OFF-ROAD MOUNTAIN PERFORMANCE	(10/10)
TREADWEAR	(9/10)
OFF-ROAD SAND PERFORMANCE	(8/10)



M/T

RANGE

15 - 18

ASPECT RATIO

60 - 75

SPEED SYMBOL

N - (Q)

PLY RATING

6 - 10



**TREAD BIONIC "SHARK",
BLOCK DESIGN**



**WIDEN AND DEEPEN
THE GROOVE
DESIGN**



**THE SHOULDER PATTERN
ADOPTS THE SILT
SELF-CLEANING TECHNOLOGY
AND THE STONE EJECTION
GROOVE**



**SIDEWALL BIONIC DECORATIVE
DESIGN**

SIZE	LI/SI	PR	Rim	SW (mm)	OD (mm)	Load Index (kg)	Load Index (Lbs)	Max Pressure Kpa/Psi	Sidewall	
LT215/75R15	100/97Q	6	6 J	216	703	800/730	1765/1610	350/50	BSW	POR
LT235/75R15	104/101Q	6	6 1/2J	235	733	900/825	1985/1820	350/50	BSW	POR
LT215/85R16	115/112Q	10	6 J	216	772	1215/1120	2680/2470	550/80	BSW	POR
LT225/75R16	115/112N	10	6 J	223	744	1215/1120	2680/2470	550/80	BSW	POR
LT235/85R16	120/116Q	10	6 1/2J	235	806	1380/1260	3042/2778	550/80	BSW	POR
LT245/75R16	120/116N	10	7 J	248	774	1380/1260	3042/2778	550/80	BSW	POR
LT305/70R16	124/121P	10	9 J	311	834	1600/1450	3525/3195	450/65	BSW	POR
LT315/75R16	127/124Q	10	8 1/2J	313	878	1750/1600	3860/3525	450/65	BSW	POR
31X10.50R15LT	109Q	6	8 1/2J	268	775	1030	2270	350/50	BSW	POR
32X11.50R15LT	113Q	6	9 J	290	801	1150	2535	350/50	BSW	POR
33X12.50R15LT	108Q	6	10J	318	826	1000	2205	250/35	BSW	POR
33X12.50R17LT	120Q	10	10 J	318	826	1400	3085	450/65	BSW	POR

TOPFORCE M/T

HP UHP A/S EV VAN H/T A/T R/T **M/T** WINTER STUDED

PERFORMANCE SPORT	(10/10)
DRY GRIP	(9/10)
WET GRIP	(9/10)
SILENT PERFORMANCE	(7/10)
TREADWEAR	(8/10)



M/T

RANGE
15 - 22

ASPECT RATIO
65 - 85

SPEED SYMBOL
Q - (Q)

PLY RATING
6 - 10



BIONIC "SHARK" TREAD PATTERN DESIGN



WIDENED AND DEEPENED GROOVE DESIGN



BIONIC SIDEWALL ORNAMENTAL DESIGN

SIZE	LI/SI	PR	Rim	SW (mm)	OD (mm)	Load Index (kg)	Max Pressure (Lbs)	Max Pressure Kpa/Psi	Sidewall	
LT235/75R15	104/101Q	6	6 1/2J	235	733	900/825	1985/1820	350/50	WSW	POR
LT235/85R16	120/116Q	10	6 1/2J	235	806	1380/1260	3042/2778	550/80	WSW	POR
LT235/70R16	110/107Q	8	7J	240	736	1060/975	2335/2150	450/65	WSW	POR
LT245/70R16	118/115Q	10	7J	248	750	1320/1215	2910/2680	550/80	WSW	POR
LT265/75R16	119/116Q	8	7 1/2J	267	804	1360/1250	3000/2755	450/65	WSW	POR
LT265/75R16	123/120Q	10	7 1/2J	267	804	1500/1400	3415/3085	550/80	WSW	POR
LT285/75R16	116/113Q	6	8J	286	834	1250/1150	2755/2535	350/50	WSW	POR
LT285/75R16	126/123Q	0	8J	286	834	1700/1550	3750/3415	550/80	WSW	POR
LT265/65R17	120/117Q	10	8J	272	782	1400/1285	3085/2835	550/80	WSW	POR
LT265/70R17	121/118Q	10	8J	272	804	1450/1320	3195/2910	550/80	WSW	POR
LT285/70R17	121/118Q	8	8 1/2J	292	832	1450/1320	3195/2910	450/65	WSW	POR
31X10.50R15LT	109Q	6	8 1/2J	268	775	1030	2270	350/50	WSW	POR
35X12.50R15LT	113Q	6	10J	318	877	1150	2535	250/35	WSW	POR
35X12.50R17LT	121Q	0	10J	318	877	1450	3195	450/65	WSW	POR
33X12.50R18LT	118Q	10	10J	318	826	1320	2910	450/65	WSW	POR
35X12.50R18LT	118Q	8	10J	318	877	1320	2910	350/50	WSW	POR
33X12.50R20LT	114Q	10	10J	318	826	1180	2600	450/65	WSW	POR
35X12.50R20LT	121Q	10	10J	318	877	1450	3195	450/65	WSW	POR
33X12.50R22LT	109Q	10	10J	318	832	1030	2270	450/65	BSW	POR

SNOWGRIPPER 1

HP UHP A/S EV VAN H/T A/T R/T M/T **WINTER** STUDED

SNOW PERFORMANCE	(9/10)
ICE PERFORMANCE	(9/10)
TREADWEAR	(9/10)
SILENT PERFORMANCE	(10/10)
COMFORT PERFORMANCE	(8/10)



WINTER



RANGE

13 - 20

ASPECT RATIO

35 - 80

SPEED SYMBOL

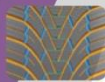
T - (V)

UTQG

---/---/---



DESIGN WITH A HYBRID OF MULTIPLE GROOVES



MULTIPLE GROOVES HYBRID DESIGN



DESIGN WITH SINUOUS, CLOSELY-SPACED STEEL BLADES



COMPOUND DEVELOPED SPECIFICALLY FOR WINTER TREAD PATTERNS

SIZE	L/SI	Rim	SW (mm)	OD (mm)	Load Index (kg)	Load Index (Lbs)	Max Pressure Kpa/Psi	UTQG	Sidewall	0	0	0	0
145/70R13	71T	450B	150	534	345	761	300/44	---/---/---	BSW	✓	✓	✓	✓
145/80R13	75T	400B	145	562	387	853	300/44	---/---/---	BSW	✓	✓	✓	✓
155/65R13	73T	450B	157	532	365	805	300/44	---/---/---	BSW	✓	✓	✓	✓
155/70R13	75T	450B	157	548	387	853	300/44	---/---/---	BSW	✓	✓	✓	✓
155/80R13	79T	450B	157	578	437	963	300/44	---/---/---	BSW	✓	✓	✓	✓
165/70R13	79T	500B	170	562	437	963	300/44	---/---/---	BSW	✓	✓	✓	✓
165/80R13	83T	450B	165	594	487	1074	300/44	---/---/---	BSW	✓	✓	✓	✓
175/65R13	80T	500B	177	558	450	992	300/44	---/---/---	BSW	✓	✓	✓	✓
175/70R13	82T	500B	177	576	475	1047	300/44	---/---/---	BSW	✓	✓	✓	✓
155/65R14	75T	41/2J	157	558	387	853	300/44	---/---/---	BSW	✓	✓	✓	✓
165/60R14	75H	5J	170	554	387	853	300/44	---/---/---	BSW	✓	✓	✓	✓
165/65R14	79T	5J	170	570	437	963	300/44	---/---/---	BSW	✓	✓	✓	✓
165/70R14	81T	5J	170	588	462	1019	300/44	---/---/---	BSW	✓	✓	✓	✓
175/65R14	82T	5J	177	584	475	1047	300/44	---/---/---	BSW	✓	✓	✓	✓
175/70R14	84T	5J	177	602	500	1102	300/44	---/---/---	BSW	✓	✓	✓	✓
185/55R14	80H	6J	194	560	450	992	300/44	---/---/---	BSW	✓	✓	✓	✓
185/60R14	82T	5 1/2J	189	578	475	1047	300/44	---/---/---	BSW	✓	✓	✓	✓
185/65R14	86T	5 1/2J	189	596	530	1168	300/44	---/---/---	BSW	✓	✓	✓	✓
185/70R14	88T	5 1/2J	189	616	560	1235	300/44	---/---/---	BSW	✓	✓	✓	✓
195/60R14	86H	6J	201	590	530	1168	300/44	---/---/---	BSW	✓	✓	✓	✓
195/65R14	89H	6J	201	610	580	1279	300/44	---/---/---	BSW	✓	✓	✓	✓
195/70R14	91T	6J	201	630	615	1356	300/44	---/---/---	BSW	✓	✓	✓	✓
165/60R15	81H XL	5J	170	579	462	1019	340/50	---/---/---	BSW	✓	✓	✓	✓
165/65R15	81T	5J	170	595	462	1019	300/44	---/---/---	BSW	✓	✓	✓	✓
175/55R15	77H	5 1/2J	182	573	412	908	300/44	---/---/---	BSW	✓	✓	✓	✓
175/60R15	81H	5J	177	591	462	1019	300/44	---/---/---	BSW	✓	✓	✓	✓
175/65R15	84T	5J	177	609	500	1102	300/44	---/---/---	BSW	✓	✓	✓	✓
185/55R15	82H	6J	194	585	475	1047	300/44	---/---/---	BSW	✓	✓	✓	✓
185/60R15	84H	5 1/2J	189	603	500	1102	300/44	---/---/---	BSW	✓	✓	✓	✓
185/65R15	88T	5 1/2J	189	621	560	1235	300/44	---/---/---	BSW	✓	✓	✓	✓
195/50R15	82V	6J	201	577	475	1047	300/44	---/---/---	BSW	✓	✓	✓	✓
195/55R15	85H	6J	201	595	515	1135	300/44	---/---/---	BSW	✓	✓	✓	✓
195/60R15	88H	6J	201	615	560	1235	300/44	---/---/---	BSW	✓	✓	✓	✓
195/65R15	95T XL	6J	201	635	690	1521	340/50	---/---/---	BSW	✓	✓	✓	✓
205/60R15	91H	6J	209	627	615	1356	300/44	---/---/---	BSW	✓	✓	✓	✓
205/65R15	94H	6J	209	647	670	1477	300/44	---/---/---	BSW	✓	✓	✓	✓
205/70R15	96T	6J	209	669	710	1565	300/44	---/---/---	BSW	✓	✓	✓	✓

SIZE	LI/SI	Rim	SW (mm)	OD (mm)	Load Index (kg)	Max Pressure (Lbs)	Max Pressure Kpa/Psi	UTQG	Sidewall	
215/65R15	96H	6 1/2J	221	661	710	1565	300/44	---/---/---	BSW	✓ ✓ ✓
185/50R16	81V	6J	194	592	462	1019	300/44	---/---/---	BSW	✓ ✓ ✓
185/55R16	83H	6J	194	610	487	1074	300/44	---/---/---	BSW	✓ ✓ ✓
185/60R16	86H	5 1/2J	189	628	530	1168	300/44	---/---/---	BSW	✓ ✓ ✓
195/45R16	84VXL	6 1/2J	195	582	500	1102	340/50	---/---/---	BSW	✓ ✓ ✓
195/50R16	84V	6J	201	602	500	1102	300/44	---/---/---	BSW	✓ ✓ ✓
195/55R16	91H XL	6J	201	620	615	1356	340/50	---/---/---	BSW	✓ ✓ ✓
205/45R16	87V XL	7J	206	590	545	1201	340/50	---/---/---	BSW	✓ ✓ ✓
205/50R16	91V XL	6 1/2J	214	612	615	1356	340/50	---/---/---	BSW	✓ ✓ ✓
205/55R16	91H	6 1/2J	214	632	615	1356	300/44	---/---/---	BSW	✓ ✓ ✓
205/60R16	92H	6 J	209	652	630	1389	300/44	---/---/---	BSW	✓ ✓ ✓
205/65R16	95H	6 J	209	672	690	1521	300/44	---/---/---	BSW	✓ ✓ ✓
215/45R16	90V XL	7J	213	600	600	1323	340/50	---/---/---	BSW	✓ ✓ ✓
215/55R16	97H XL	7J	226	642	730	1609	340/50	---/---/---	BSW	✓ ✓ ✓
215/60R16	99H XL	6 1/2J	221	664	775	1709	340/50	---/---/---	BSW	✓ ✓ ✓
215/65R16	98T	6 1/2J	221	686	750	1653	300/44	---/---/---	BSW	✓ ✓ ✓
225/55R16	95H	7 J	233	654	690	1521	300/44	---/---/---	BSW	✓ ✓ ✓
225/60R16	98H	6 1/2J	228	676	750	1653	300/44	---/---/---	BSW	✓ ✓ ✓
225/65R16	100T	6 1/2J	228	698	800	1764	300/44	---/---/---	BSW	✓ ✓ ✓
205/40R17	84V XL	7 1/2J	212	596	500	1102	340/50	---/---/---	BSW	✓ ✓ ✓
205/45R17	88V XL	7 J	206	616	560	1235	340/50	---/---/---	BSW	✓ ✓ ✓
205/50R17	93H XL	6 1/2J	214	638	650	1433	340/50	---/---/---	BSW	✓ ✓ ✓
205/55R17	95H XL	6 1/2J	214	658	690	1521	340/50	---/---/---	BSW	✓ ✓ ✓
215/40R17	87V XL	7 1/2J	218	604	545	1201	340/50	---/---/---	BSW	✓ ✓ ✓
215/45R17	91V XL	7 J	213	626	615	1356	340/50	---/---/---	BSW	✓ ✓ ✓
215/50R17	95H XL	7J	226	648	690	1521	340/50	---/---/---	BSW	✓ ✓ ✓
215/55R17	98V XL	7J	226	668	750	1653	340/50	---/---/---	BSW	✓ ✓ ✓
225/45R17	94V XL	7 1/2J	225	634	670	1477	340/50	---/---/---	BSW	✓ ✓ ✓
225/50R17	98H XL	7J	233	658	750	1653	340/50	---/---/---	BSW	✓ ✓ ✓
225/55R17	101H XL	7 J	233	680	825	1819	340/50	---/---/---	BSW	✓ ✓ ✓
235/45R17	97H XL	8J	236	644	730	1609	340/50	---/---/---	BSW	✓ ✓ ✓
235/55R17	103H XL	7 1/2J	245	690	875	1929	340/50	---/---/---	BSW	✓ ✓ ✓
245/40R17	95V XL	8 1/2J	248	628	690	1521	340/50	---/---/---	BSW	✓ ✓ ✓
245/45R17	99V XL	8 J	243	652	775	1709	340/50	---/---/---	BSW	✓ ✓ ✓
215/45R18	93V XL	7J	213	651	650	1433	340/50	---/---/---	BSW	✓ ✓ ✓
215/55R18	99H XL	7 J	226	693	775	1709	340/50	---/---/---	BSW	✓ ✓ ✓
225/40R18	92H XL	8J	230	637	630	1389	340/50	---/---/---	BSW	✓ ✓ ✓

SIZE	LI/SI	Rim	SW (mm)	OD (mm)	Load Index (kg)	Max Pressure (Lbs)	Max Pressure Kpa/Psi	UTQG	Sidewall	
225/45R18	95H XL	7 1/2J	225	659	690	1521	340/50	---/---/---	BSW	✓ ✓ ✓
225/50R18	99H XL	7J	233	683	775	1709	340/50	---/---/---	BSW	✓ ✓ ✓
225/55R18	98H	7J	233	705	750	1653	300/44	---/---/---	BSW	✓ ✓ ✓
235/40R18	95V XL	8 1/2J	241	645	690	1521	340/50	---/---/---	BSW	✓ ✓ ✓
235/45R18	98H XL	8J	236	669	750	1653	340/50	---/---/---	BSW	✓ ✓ ✓
235/50R18	97V	7 1/2J	245	693	730	1609	300/44	---/---/---	BSW	✓ ✓ ✓
235/55R18	104H XL	7 1/2J	245	715	900	1984	340/50	---/---/---	BSW	✓ ✓ ✓
245/40R18	97V XL	8 1/2J	248	653	730	1609	340/50	---/---/---	BSW	✓ ✓ ✓
245/45R18	100H XL	8J	243	677	800	1764	340/50	---/---/---	BSW	✓ ✓ ✓
245/50R18	104H XL	7 1/2J	253	703	900	1984	340/50	---/---/---	BSW	✓ ✓ ✓
255/40R18	99H XL	9J	260	661	775	1709	340/50	---/---/---	BSW	✓ ✓ ✓
255/45R18	99V	8 1/2J	255	687	775	1709	300/44	---/---/---	BSW	✓ ✓ ✓
225/40R19	93V XL	8J	230	663	650	1433	340/50	---/---/---	BSW	✓ ✓ ✓
225/45R19	96V XL	7 1/2J	225	685	710	1565	340/50	---/---/---	BSW	✓ ✓ ✓
225/55R19	99H	7J	233	731	775	1709	300/44	---/---/---	BSW	✓ ✓ ✓
235/35R19	91V XL	8 1/2J	241	647	615	1356	340/50	---/---/---	BSW	✓ ✓ ✓
235/45R19	99V XL	8J	236	695	775	1709	340/50	---/---/---	BSW	✓ ✓ ✓
235/50R19	103V XL	7 1/2J	245	719	875	1929	340/50	---/---/---	BSW	✓ ✓ ✓
235/55R19	105H XL	7 1/2J	245	741	925	2039	340/50	---/---/---	BSW	✓ ✓ ✓
245/40R19	98V XL	8 1/2J	248	679	750	1653	340/50	---/---/---	BSW	✓ ✓ ✓
245/45R19	102H XL	8J	243	703	850	1874	340/50	---/---/---	BSW	✓ ✓ ✓
245/50R19	105H XL	7 1/2J	253	729	925	2039	340/50	---/---/---	BSW	✓ ✓ ✓
255/35R19	96V XL	9J	260	661	710	1565	340/50	---/---/---	BSW	✓ ✓ ✓
255/40R19	100H XL	9J	260	687	800	1764	340/50	---/---/---	BSW	✓ ✓ ✓
255/45R19	104H XL	8 1/2J	255	713	900	1984	340/50	---/---/---	BSW	✓ ✓ ✓
235/55R20	105H XL	7 1/2J	245	766	925	2039	340/50	---/---/---	BSW	✓ ✓ ✓
245/35R20	95V XL	8 1/2J	248	680	690	1521	340/50	---/---/---	BSW	✓ ✓ ✓
245/40R20	99V XL	8 1/2J	248	704	775	1709	340/50	---/---/---	BSW	✓ ✓ ✓
245/45R20	103V XL	8J	243	728	875	1929	340/50	---/---/---	BSW	✓ ✓ ✓
245/50R20	105H XL	7 1/2J	253	754	925	2039	340/50	---/---/---	BSW	✓ ✓ ✓
255/35R20	97V XL	9J	260	686	730	1609	340/50	---/---/---	BSW	✓ ✓ ✓
255/40R20	101V XL	9J	260	712	825	1819	340/50	---/---/---	BSW	✓ ✓ ✓
255/45R20	105V XL	8 1/2J	255	738	925	2039	340/50	---/---/---	BSW	✓ ✓ ✓

SNOWGRIPPER II

HP UHP A/S EV VAN H/T A/T R/T M/T **WINTER** STUDED

SNOW PERFORMANCE	(9/10)
ICE PERFORMANCE	(9/10)
TREADWEAR	(9/10)
SILENT PERFORMANCE	(9/10)
COMFORT PERFORMANCE	(8/10)



WINTER



RANGE

18 - 22

ASPECT RATIO

35 - 55

SPEED SYMBOL

H - (V)

UTQG

---/---/---



NEW DIRECTIONAL TREAD PATTERN DESIGN



LONGITUDINAL AND TRANSVERSE GROOVES INTERLOCKING DESIGN



COMBINATION DESIGN OF S-TYPE FINE GROOVE AND I-TYPE STRAIGHT GROOVE



NEW SILICA TREAD COMPOUND DESIGN

SIZE	L1/S1	Rim	SW (mm)	OD (mm)	Load Index (kg)	Max Pressure Kpa/Psi	UTQG	Sidewall	TPMS	EV	UHP	
255/55R18	109H XL	8J	265	737	1030	2271	340/50	---/---/---	BSW	✓	✓	✓
265/35R18	97V XL	9 1/2J	271	643	730	1609	340/50	---/---/---	BSW	✓	✓	✓
275/40R18	103H XL	9 1/2J	278	677	875	1929	340/50	---/---/---	BSW	✓	✓	✓
245/55R19	107H XL	7 1/2J	253	753	975	2149	340/50	---/---/---	BSW	✓	✓	✓
255/50R19	107H XL	8J	265	739	975	2149	340/50	---/---/---	BSW	✓	✓	✓
255/55R19	111H XL	8J	265	763	1090	2403	340/50	---/---/---	BSW	✓	✓	✓
275/35R19	100V XL	9 1/2J	278	675	800	1764	340/50	---/---/---	BSW	✓	✓	✓
275/40R19	105V XL	9 1/2J	278	703	925	2039	340/50	---/---/---	BSW	✓	✓	✓
285/45R19	111H XL	9 1/2J	285	739	1090	2403	340/50	---/---/---	BSW	✓	✓	✓
245/40R19	98V XL	8 1/2J	248	679	750	1653	340/50	---/---/---	BSW	✓	✓	✓
245/45R19	102H XL	8J	243	703	850	1874	340/50	---/---/---	BSW	✓	✓	✓
245/40R19	98V XL	8 1/2J	248	679	750	1653	340/50	---/---/---	BSW	✓	✓	✓
265/50R19	110H XL	8 1/2J	277	749	1060	2337	340/50	---/---/---	BSW	✓	✓	✓
275/55R19	111H	8 1/2J	284	785	1090	2403	300/44	---/---/---	BSW	✓	✓	✓
265/55R19	113T XL	8 1/2J	277	775	1150	2535	340/50	---/---/---	BSW	✓	✓	✓
235/40R19	96V XL	8 1/2J	241	671	710	1565	340/50	---/---/---	BSW	✓	✓	✓
255/50R20	109H XL	8J	265	764	1030	2271	340/50	---/---/---	BSW	✓	✓	✓
255/55R20	110H XL	8J	265	788	1060	2337	340/50	---/---/---	BSW	✓	✓	✓
265/45R20	108H XL	9J	266	746	1000	2205	340/50	---/---/---	BSW	✓	✓	✓
275/35R20	102H XL	9 1/2J	278	700	850	1874	340/50	---/---/---	BSW	✓	✓	✓
275/40R20	106H XL	9 1/2J	278	728	950	2094	340/50	---/---/---	BSW	✓	✓	✓
275/45R20	110H XL	9J	273	756	1060	2337	340/50	---/---/---	BSW	✓	✓	✓
275/50R20	113H XL	8 1/2J	284	784	1150	2535	340/50	---/---/---	BSW	✓	✓	✓
275/55R20	117S XL	8 1/2J	284	810	1285	2833	340/50	---/---/---	BSW	✓	✓	✓
285/50R20	116H XL	9J	297	794	1250	2756	340/50	---/---/---	BSW	✓	✓	✓
305/40R20	112H XL	11J	313	752	1120	2469	340/50	---/---/---	BSW	✓	✓	✓
315/35R20	110V XL	11J	320	728	1060	2337	340/50	---/---/---	BSW	✓	✓	✓
245/40R20	99V XL	8 1/2J	248	704	775	1709	340/50	---/---/---	BSW	✓	✓	✓
245/45R20	103V XL	8J	243	728	875	1929	340/50	---/---/---	BSW	✓	✓	✓
255/45R20	105V XL	8 1/2J	255	738	925	2039	340/50	---/---/---	BSW	✓	✓	✓

SIZE	LI/SI	Rim	SW (mm)	OD (mm)	Load Index (kg) (Lbs)		Max Pressure Kpa/Psi	UTQG	Sidewall			
265/35R20	99H XL	9 1/2J	271	694	775	1709	340/50	---/---	BSW	✓	✓	✓
265/50R20	111H XL	8 1/2J	277	774	1090	2403	340/50	---/---	BSW	✓	✓	✓
275/30R20	97H XL	9 1/2J	278	674	730	1609	340/50	---/---	BSW	✓	✓	✓
285/30R20	99H XL	10J	290	680	775	1709	340/50	---/---	BSW	✓	✓	✓
285/45R20	112H XL	9 1/2J	285	764	1120	2469	340/50	---/---	BSW	✓	✓	✓
265/45R21	108H XL	9J	266	771	1000	2205	340/50	---/---	BSW	✓	✓	✓
275/40R21	107H XL	9 1/2J	278	753	975	2149	340/50	---/---	BSW	✓	✓	✓
275/45R21	110H XL	9J	273	781	1060	2337	340/50	---/---	BSW	✓	✓	✓
275/50R21	113H XL	8 1/2J	284	809	1150	2535	340/50	---/---	BSW	✓	✓	✓
285/40R21	109H XL	10J	290	761	1030	2271	340/50	---/---	BSW	✓	✓	✓
295/35R21	107H XL	10 1/2J	301	739	975	2149	340/50	---/---	BSW	✓	✓	✓
295/40R21	111H XL	10 1/2J	301	769	1090	2403	340/50	---/---	BSW	✓	✓	✓
315/35R21	111H XL	11J	320	753	1090	2403	340/50	---/---	BSW	✓	✓	✓
315/40R21	115H XL	11J	320	785	1215	2679	340/50	---/---	BSW	✓	✓	✓
255/40R21	102V XL	9J	260	737	850	1874	340/50	---/---	BSW	✓	✓	✓
285/45R21	113H XL	9 1/2J	285	789	1150	2535	340/50	---/---	BSW	✓	✓	✓
275/40R22	107H XL	9 1/2J	278	779	975	2149	340/50	---/---	BSW	✓	✓	✓
315/35R22	111H XL	11J	320	779	1090	2403	340/50	---/---	BSW	✓	✓	✓
265/40R22	106H XL	9 1/2J	271	771	950	2094	340/50	---/---	BSW	✓	✓	✓
285/40R22	110H XL	10J	290	787	1060	2337	340/50	---/---	BSW	✓	✓	✓

WINTER IL868

HP UHP A/S EV VAN H/T A/T R/T M/T **WINTER** STUDED

SNOW PERFORMANCE	(9/10)
ICE PERFORMANCE	(9/10)
TREADWEAR	(9/10)
SILENT PERFORMANCE	(9/10)
COMFORT PERFORMANCE	(8/10)



WINTER



RANGE

12 - 20

ASPECT RATIO

40 - 70

SPEED SYMBOL

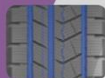
T - (V)

UTQG

---/---/---



ASYMMETRIC WINTER TREAD PATTERN DESIGN



DUAL-SIDE ZIGZAG LONGITUDINAL GROOVES



3D CURVED STEEL SIPES DESIGN AND OPTIMIZED DISTRIBUTION



NEW SILICA COMPOUND FORMULATION DESIGN

SIZE	LI/SI	Rim	SW (mm)	OD (mm)	Load Index (kg)	Load Index (Lbs)	Max Pressure Kpa/Psi	UTQG	Sidewall	HP	UHP	A/S	EV	VAN	H/T	A/T	R/T	M/T	WINTER	STUDED	
145/70R12	69T	4.50B	150	509	325	716	300/44	---/---/---	BSW	✓	✓	✓									
155/65R13	73T	4.50B	157	532	365	805	300/44	---/---/---	BSW	✓	✓	✓									
155/70R13	75T	4 1/2J	157	548	387	853	300/44	---/---/---	BSW	✓	✓	✓									
165/70R13	79T	5.00B	170	562	437	963	300/44	---/---/---	BSW	✓	✓	✓									
155/65R14	75T	4 1/2J	157	558	387	853	300/44	---/---/---	BSW	✓	✓	✓									
165/65R14	79T	5J	170	570	437	963	300/44	---/---/---	BSW	✓	✓	✓									
165/70R14	85TXL	5J	170	588	515	1135	340/50	---/---/---	BSW	✓	✓	✓									
175/70R14	88T	5J	177	602	560	1235	340/50	---/---/---	BSW	✓	✓	✓									
185/60R14	82T	5 1/2J	189	578	475	1047	300/44	---/---/---	BSW	✓	✓	✓									
185/65R14	86H	5 1/2J	189	596	530	1168	300/44	---/---/---	BSW	✓	✓	✓									
195/60R14	86H	6J	201	590	530	1168	300/44	---/---/---	BSW	✓	✓	✓									
175/65R15	84T	5J	177	609	500	1102	300/44	---/---/---	BSW	✓	✓	✓									
185/60R15	84H	5 1/2J	189	603	500	1102	300/44	---/---/---	BSW	✓	✓	✓									
185/65R15	88H	5 1/2J	189	621	560	1235	300/44	---/---/---	BSW	✓	✓	✓									
195/55R15	85V	6J	201	595	515	1135	300/44	---/---/---	BSW	✓	✓	✓									
195/60R15	88H	6J	201	615	560	1235	300/44	---/---/---	BSW	✓	✓	✓									
195/65R15	95T	6J	201	635	690	1521	340/50	---/---/---	BSW	✓	✓	✓									
205/65R15	94H	6J	209	647	670	1477	300/44	---/---/---	BSW	✓	✓	✓									
215/70R15	98T	6 1/2J	221	683	750	1653	300/44	---/---/---	BSW	✓	✓	✓									
175/55R16	80T	5 1/2J	182	598	450	992	300/44	---/---/---	BSW	✓	✓	✓									
195/55R16	91H XL	6J	201	620	615	1356	340/50	---/---/---	BSW	✓	✓	✓									
195/60R16	89H	6J	201	640	580	1279	300/44	---/---/---	BSW	✓	✓	✓									
205/55R16	91H	6 1/2J	214	632	615	1356	300/44	---/---/---	BSW	✓	✓	✓									
205/60R16	96H	6J	209	652	710	1565	340/50	---/---/---	BSW	✓	✓	✓									
215/55R16	97H XL	7J	226	642	730	1609	340/50	---/---/---	BSW	✓	✓	✓									
215/60R16	99H	6 1/2J	221	664	775	1709	340/50	---/---/---	BSW	✓	✓	✓									
215/70R16	100T	6 1/2J	221	708	800	1764	300/44	---/---/---	BSW	✓	✓	✓									
225/70R16	107TXL	6 1/2J	228	722	975	2149	340/50	---/---/---	BSW	✓	✓	✓									
235/60R16	100H	7J	240	688	800	1764	300/44	---/---/---	BSW	✓	✓	✓									
245/70R16	111TXL	7J	248	750	1090	2403	340/50	---/---/---	BSW	✓	✓	✓									

SIZE	LI/SI	Rim	SW (mm)	OD (mm)	Load Index (kg)	Max Pressure (Lbs)	UTQG	Sidewall				
265/70R16	112T	8J	272	778	1120	2469	300/44	---/---	BSW	✓	✓	✓
205/50R17	93H XL	6 1/2J	214	638	650	1433	340/50	---/---	BSW	✓	✓	✓
215/50R17	95H XL	7J	226	648	690	1521	340/50	---/---	BSW	✓	✓	✓
215/55R17	98V	7J	226	668	750	1653	340/50	---/---	BSW	✓	✓	✓
215/60R17	96H	6 1/2J	221	690	710	1565	300/44	---/---	BSW	✓	✓	✓
225/50R17	98H XL	7J	233	658	750	1653	340/50	---/---	BSW	✓	✓	✓
225/55R17	101V	7J	233	680	825	1819	340/50	---/---	BSW	✓	✓	✓
225/60R17	99H	6 1/2J	228	702	775	1709	300/44	---/---	BSW	✓	✓	✓
225/65R17	102H	6 1/2J	228	724	850	1874	300/44	---/---	BSW	✓	✓	✓
235/45R17	97H XL	8J	236	644	730	1609	340/50	---/---	BSW	✓	✓	✓
235/55R17	103H XL	7 1/2J	245	690	875	1929	340/50	---/---	BSW	✓	✓	✓
235/60R17	102H	7J	240	714	850	1873	300/44	---/---	BSW	✓	✓	✓
235/65R17	108T XL	7J	240	738	1000	2205	340/50	---/---	BSW	✓	✓	✓
245/65R17	107S	7J	248	750	975	2149	300/44	---/---	BSW	✓	✓	✓
245/70R17	114T XL	7J	248	776	1180	2601	340/50	---/---	BSW	✓	✓	✓
255/60R17	110T XL	7 1/2J	260	738	1060	2337	340/50	---/---	BSW	✓	✓	✓
265/65R17	112T	8J	272	776	1120	2469	300/44	---/---	BSW	✓	✓	✓
265/70R17	115T	8J	272	804	1215	2679	300/44	---/---	BSW	✓	✓	✓
215/50R18	96H XL	7J	226	673	710	1565	340/50	---/---	BSW	✓	✓	✓
225/40R18	92H XL	8J	230	637	630	1389	340/50	---/---	BSW	✓	✓	✓
225/45R18	95H XL	7 1/2J	225	659	690	1521	340/50	---/---	BSW	✓	✓	✓
225/60R18	104H XL	6 1/2J	228	727	900	1984	340/50	---/---	BSW	✓	✓	✓
235/45R18	98H XL	8J	236	669	750	1653	340/50	---/---	BSW	✓	✓	✓
235/60R18	107H XL	7J	240	739	975	2149	340/50	---/---	BSW	✓	✓	✓
235/65R18	106H	7J	240	763	950	2094	300/44	---/---	BSW	✓	✓	✓
245/40R18	97V XL	8 1/2J	248	653	730	1609	340/50	---/---	BSW	✓	✓	✓
245/45R18	100H XL	8J	243	677	800	1764	340/50	---/---	BSW	✓	✓	✓
245/60R18	105H	7J	248	751	925	2039	300/44	---/---	BSW	✓	✓	✓
255/55R18	109H XL	8J	265	737	1030	2271	340/50	---/---	BSW	✓	✓	✓
255/60R18	112T XL	7 1/2J	260	763	1120	2469	340/50	---/---	BSW	✓	✓	✓

SIZE	LI/SI	Rim	SW (mm)	OD (mm)	Load Index (kg)	Max Pressure (Lbs)	UTQG	Sidewall				
265/60R18	110T	8J	272	775	1060	2337	300/44	---/---	BSW	✓	✓	✓
265/65R18	116T XL	8J	272	801	1250	2756	340/50	---/---	BSW	✓	✓	✓
265/70R18	116S	8J	272	829	1250	2756	300/44	---/---	BSW	✓	✓	✓
285/60R18	116H	8 1/2J	292	799	1250	2756	300/44	---/---	BSW	✓	✓	✓
235/55R19	105H XL	7 1/2J	245	741	925	2039	340/50	---/---	BSW	✓	✓	✓
235/60R19	107H XL	7J	240	765	975	2149	340/50	---/---	BSW	✓	✓	✓
245/45R19	102H XL	8J	243	703	850	1874	340/50	---/---	BSW	✓	✓	✓
245/55R19	107H XL	7 1/2J	253	753	975	2149	340/50	---/---	BSW	✓	✓	✓
255/50R19	107H XL	8J	265	739	975	2149	340/50	---/---	BSW	✓	✓	✓
255/55R19	111H XL	8J	265	763	1090	2403	340/50	---/---	BSW	✓	✓	✓
255/60R19	113H XL	7 1/2J	260	789	1150	2535	340/50	---/---	BSW	✓	✓	✓
235/50R20	104HXL	7 1/2J	245	744	900	1984	340/50	---/---	BSW	✓	✓	✓
255/45R20	105V XL	8 1/2J	255	738	925	2039	340/50	---/---	BSW	✓	✓	✓
275/40R20	106H XL	9 1/2J	278	728	950	2094	340/50	---/---	BSW	✓	✓	✓
275/45R20	110H XL	9J	273	756	1060	2337	340/50	---/---	BSW	✓	✓	✓
275/60R20	119H XL	8J	279	838	1360	2998	340/50	---/---	BSW	✓	✓	✓
315/35R20	110V XL	11J	320	728	1060	2337	340/50	---/---	BSW	✓	✓	✓

WINTER IL989

HP UHP A/S EV VAN H/T A/T R/T M/T **WINTER** STUDD

MILEAGE PERFORMANCE	(9/10)
SILENT PERFORMANCE	(9/10)
ECONOMIC PERFORMANCE	(9/10)
SNOW PERFORMANCE	(9/10)
ICE PERFORMANCE	(8/10)



WINTER



RANGE

14 - 16

ASPECT RATIO

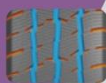
60 - 75

SPEED SYMBOL

R - (H)

PLY RATING

6 - 8



OPTIMIZED TREAD GROOVE DESIGN



WIDECOMBINATION DESIGN OF SHOULDER BLOCKS AND SPECIAL SIPESNGITUDINAL GROOVE DESIGN



WINTER-TREAD-SPECIFIC COMPOUND DESIGN

SIZE	LI/SI	PR	Rim	SW (mm)	OD (mm)	Load Index (kg)	Load Index (Lbs)	Max Pressure Kpa/Psi	Sidewall	0	0	0
165/70R14C	89/87R	6	5J	170	588	580/545	1279/1202	375/54	BSW	✓	✓	✓
175/65R14C	90/88T	6	5J	177	584	600/560	1323/1235	375/54	BSW	✓	✓	✓
175/70R14C	95/93T	6	5J	177	602	690/650	1521/1433	375/54	BSW	✓	✓	✓
175R14C	99/97R	8	5J	177	636	775/730	1709/1609	450/65	BSW	✓	✓	✓
185R14C	102/100R	8	5 1/2J	188	650	850/800	1874/1764	450/65	BSW	✓	✓	✓
185R15C	103/102R	8	5 1/2J	188	674	875/850	1930/1875	450/65	BSW	✓	✓	✓
195R15C	106/104R	8	5 1/2J	188	690	950/900	2094/1984	450/65	BSW	✓	✓	✓
195/70R15C	104/102R	8	6J	201	655	900/850	1984/1874	450/65	BSW	✓	✓	✓
205/70R15C	106/104R	8	6J	209	669	950/900	2094/1984	450/65	BSW	✓	✓	✓
215/65R15C	104/102R	6	6 1/2J	221	661	900/850	1984/1874	375/54	BSW	✓	✓	✓
215/70R15C	109/107R	8	6 1/2J	221	683	1030/975	2271/2149	450/65	BSW	✓	✓	✓
225/70R15C	112/110R	8	6 1/2J	228	697	1120/1060	2469/2337	450/65	BSW	✓	✓	✓
175/75R16C	98/96R	6	5J	177	668	750/710	1653/1565	375/54	BSW	✓	✓	✓
185/75R16C	104/102R	8	5J	184	684	900/850	1984/1874	475/69	BSW	✓	✓	✓
195/60R16C	99/97H	6	6J	201	640	775/730	1709/1609	375/54	BSW	✓	✓	✓
195/65R16C	104/102R	8	6J	201	660	900/850	1984/1874	475/69	BSW	✓	✓	✓
195/75R16C	107/105R	8	5 1/2J	196	698	975/925	2149/2039	475/69	BSW	✓	✓	✓
205/65R16C	107/105R	8	6J	209	672	975/925	2149/2039	475/69	BSW	✓	✓	✓
205/75R16C	110/108R	8	5 1/2J	203	714	1060/1000	2337/2204	475/69	BSW	✓	✓	✓
215/60R16C	103/101T	6	6 1/2J	221	664	875/825	1929/1819	375/54	BSW	✓	✓	✓
215/65R16C	109/107R	8	6 1/2J	221	686	1030/975	2271/2149	475/69	BSW	✓	✓	✓
215/75R16C	113/111R	8	6J	216	728	1150/1090	2535/2403	475/69	BSW	✓	✓	✓
225/65R16C	112/110R	8	6 1/2J	228	698	1120/1060	2469/2337	475/69	BSW	✓	✓	✓
225/75R16C	116/114R	8	6J	223	744	1250/1180	2756/2601	475/69	BSW	✓	✓	✓
235/65R16C	115/113R	8	7J	240	712	1215/1150	2679/2535	475/69	BSW	✓	✓	✓

WINTERVORHUT STUD I

HP UHP A/S EV VAN H/T A/T R/T M/T WINTER **STUDED**

ICE GRIP	(9/10)
SNOW GRIP	(9/10)
SILENT & COMFORT PERFORMANCE	(8/10)
FUEL ECONOMY PERFORMANCE	(7/10)
MILEAGE PERFORMANCE	(8/10)



STUDED



STUDED DESIGN

RANGE

13 - 16

ASPECT RATIO

55 - 70

SPEED SYMBOL

T - (H)

UTQG

---/---/---



SINGLE GUIDE PATTERN DESIGN



WIDER SHOULDER PATTERN BLOCK



SAFETY PERFORMANCE



QUIET PATTERN DESIGN



ICE CRYSTAL SNOW-FLAKE NAIL HOLE PROTECTION DESIGN

SIZE	L/SI	Rim	SW (mm)	OD (mm)	Load Index (kg)	Load Index (Lbs)	Max Pressure Kpa/Psi	UTQG	Sidewall	HP	UHP	A/S	EV	VAN	H/T	A/T	R/T	M/T	WINTER	STUDED	
155/70R13	75T	4.50B	157	548	387	853	300/44	---/---/---	BSW	✓	✓	✓									✓
175/70R13	82T	5.00B	177	576	475	1047	300/44	---/---/---	BSW	✓	✓	✓									✓
175/65R14	86T XL	5J	177	584	530	1168	340/50	---/---/---	BSW	✓	✓	✓									✓
175/70R14	84T	5J	177	602	500	1102	300/44	---/---/---	BSW	✓	✓	✓									✓
185/60R14	82T	5 1/2J	189	578	475	1047	300/44	---/---/---	BSW	✓	✓	✓									✓
185/65R14	90T XL	5 1/2J	189	596	600	1323	340/50	---/---/---	BSW	✓	✓	✓									✓
185/70R14	92T XL	5 1/2J	189	616	630	1389	340/50	---/---/---	BSW	✓	✓	✓									✓
185/55R15	86T XL	6J	194	585	530	1168	340/50	---/---/---	BSW	✓	✓	✓									✓
185/60R15	88T XL	5 1/2J	189	603	560	1235	340/50	---/---/---	BSW	✓	✓	✓									✓
185/65R15	88T	5 1/2J	189	621	560	1235	300/44	---/---/---	BSW	✓	✓	✓									✓
195/55R15	85H	6J	201	595	515	1135	300/44	---/---/---	BSW	✓	✓	✓									✓
195/60R15	92T XL	6J	201	615	630	1389	340/50	---/---/---	BSW	✓	✓	✓									✓
195/65R15	95T XL	6J	201	635	690	1521	340/50	---/---/---	BSW	✓	✓	✓									✓
205/65R15	94T	6J	209	647	670	1477	300/44	---/---/---	BSW	✓	✓	✓									✓
195/55R16	91T XL	6J	201	620	615	1356	340/50	---/---/---	BSW	✓	✓	✓									✓
205/55R16	94T XL	6 1/2J	214	632	670	1477	340/50	---/---/---	BSW	✓	✓	✓									✓
205/60R16	96T XL	6J	209	652	710	1565	340/50	---/---/---	BSW	✓	✓	✓									✓
205/65R16	95T	6J	209	672	690	1521	300/44	---/---/---	BSW	✓	✓	✓									✓
215/55R16	97T XL	7J	226	642	730	1609	340/50	---/---/---	BSW	✓	✓	✓									✓
215/60R16	99T XL	6 1/2J	221	664	775	1709	340/50	---/---/---	BSW	✓	✓	✓									✓
215/65R16	102T XL	6 1/2J	221	686	850	1874	340/50	---/---/---	BSW	✓	✓	✓									✓

WINTERVORHUT STUD II

HP UHP A/S EV VAN H/T A/T R/T M/T WINTER **STUDED**

ICE GRIP	(10/10)
SNOW GRIP	(9/10)
SILENT & COMFORT PERFORMANCE	(8/10)
FUEL ECONOMY PERFORMANCE	(7/10)
MILEAGE PERFORMANCE	(8/10)



STUDED



STUDED DESIGN

RANGE

17 - 22

ASPECT RATIO

35 - 55

SPEED SYMBOL

T - (H)

UTQG

---/---/---



ULTRA-HIGH ICE GROUND PERFORMANCE



ICE HANDLING PERFORMANCE



SILENT PATTERN DESIGN



NAIL HOLE PROTECTION DEVICE



ICE CRYSTAL SNOW-FLAKE PROTECTION

SIZE	L/Sl	Rim	SW (mm)	OD (mm)	Load Index (kg)	Max Pressure Kpa/Psi	UTQG	Sidewall	HP	UHP	A/S	EV	VAN	H/T	A/T	R/T	M/T	WINTER	STUDED	
205/50R17	93T XL	6 1/2J	214	638	650	1433	340/50	---/---/---	BSW	✓	✓	✓								
205/55R17	95T XL	6 1/2J	214	658	690	1521	340/50	---/---/---	BSW	✓	✓	✓								
215/45R17	91T XL	7J	213	626	615	1356	340/50	---/---/---	BSW	✓	✓	✓								
215/50R17	95T XL	7J	226	648	690	1521	340/50	---/---/---	BSW	✓	✓	✓								
215/55R17	98T XL	7J	226	668	750	1653	340/50	---/---/---	BSW	✓	✓	✓								
225/45R17	94H XL	7 1/2J	225	634	670	1477	340/50	---/---/---	BSW	✓	✓	✓								
225/50R17	96H XL	7J	233	658	750	1653	340/50	---/---/---	BSW	✓	✓	✓								
225/55R17	101H XL	7J	233	680	825	1819	340/50	---/---/---	BSW	✓	✓	✓								
235/45R17	97T XL	8 J	236	644	730	1609	340/50	---/---/---	BSW	✓	✓	✓								
235/55R17	103T XL	7 1/2J	245	690	875	1929	340/50	---/---/---	BSW	✓	✓	✓								
215/55R18	95T	7J	226	693	690	1521	300/44	---/---/---	BSW	✓	✓	✓								
225/40R18	92T XL	8J	230	637	630	1389	340/50	---/---/---	BSW	✓	✓	✓								
225/45R18	95T XL	7 1/2J	225	659	690	1521	340/50	---/---/---	BSW	✓	✓	✓								
225/50R18	99T XL	7J	233	683	775	1709	340/50	---/---/---	BSW	✓	✓	✓								
225/55R18	102T XL	7J	233	705	850	1874	340/50	---/---/---	BSW	✓	✓	✓								
235/45R18	98T XL	8J	236	669	750	1653	340/50	---/---/---	BSW	✓	✓	✓								
235/50R18	101T XL	7 1/2J	245	693	825	1819	340/50	---/---/---	BSW	✓	✓	✓								
245/40R18	97T XL	8 1/2J	248	653	730	1609	340/50	---/---/---	BSW	✓	✓	✓								
245/45R18	100T XL	8J	243	677	800	1764	340/50	---/---/---	BSW	✓	✓	✓								
255/35R18	94T XL	9 J	260	635	670	1477	340/50	---/---/---	BSW	✓	✓	✓								
255/40R18	99T XL	9J	260	661	775	1709	340/50	---/---/---	BSW	✓	✓	✓								
265/35R18	97T XL	9 1/2J	271	643	730	1609	340/50	---/---/---	BSW	✓	✓	✓								
275/40R18	103T XL	9 1/2J	278	677	875	1929	340/50	---/---/---	BSW	✓	✓	✓								
225/40R19	93T XL	8J	230	663	650	1433	340/50	---/---/---	BSW	✓	✓	✓								
225/55R19	103T XL	7J	233	731	875	1929	340/50	---/---/---	BSW	✓	✓	✓								
235/35R19	91T XL	8 1/2J	241	647	615	1356	340/50	---/---/---	BSW	✓	✓	✓								
235/40R19	96T XL	8 1/2J	241	671	710	1565	340/50	---/---/---	BSW	✓	✓	✓								
235/50R19	103T XL	7 1/2J	245	719	875	1929	340/50	---/---/---	BSW	✓	✓	✓								
245/40R19	98T XL	8 1/2J	248	679	750	1653	340/50	---/---/---	BSW	✓	✓	✓								
245/45R19	98T	8J	243	703	750	1653	300/44	---/---/---	BSW	✓	✓	✓								

SIZE	LI/SI	Rim	SW (mm)	OD (mm)	Load Index (kg)	Max Pressure (Lbs)	Max Pressure Kpa/Psi	UTQG	Sidewall	
255/35R19	96T XL	9J	260	661	710	1565	340/50	---	BSW	✓ ✓ ✓
255/40R19	100T XL	9J	260	687	800	1764	340/50	---	BSW	✓ ✓ ✓
255/45R19	104T XL	8 1/2J	255	713	900	1984	340/50	---	BSW	✓ ✓ ✓
255/50R19	103T	8J	265	739	875	1929	300/44	---	BSW	✓ ✓ ✓
265/55R19	113T XL	8 1/2J	277	775	1150	2535	340/50	---	BSW	✓ ✓ ✓
275/35R19	100T XL	9 1/2J	278	675	800	1764	340/50	---	BSW	✓ ✓ ✓
275/40R19	105T XL	9 1/2J	278	703	925	2039	340/50	---	BSW	✓ ✓ ✓
285/45R19	111T XL	9 1/2J	285	739	1090	2403	340/50	---	BSW	✓ ✓ ✓
235/55R20	102T	7 1/2J	245	766	850	1874	300/44	---	BSW	✓ ✓ ✓
245/40R20	99T XL	8 1/2J	248	704	775	1709	340/50	---	BSW	✓ ✓ ✓
245/45R20	103T XL	8J	243	728	875	1929	340/50	---	BSW	✓ ✓ ✓
245/50R20	105T XL	7 1/2J	253	754	925	2039	340/50	---	BSW	✓ ✓ ✓
255/35R20	97T XL	9J	260	686	730	1609	340/50	---	BSW	✓ ✓ ✓
255/40R20	101T XL	9J	260	712	825	1819	340/50	---	BSW	✓ ✓ ✓
255/45R20	101T	8 1/2J	255	738	825	1819	300/44	---	BSW	✓ ✓ ✓
255/50R20	109T XL	8J	265	764	1030	2271	340/50	---	BSW	✓ ✓ ✓
255/55R20	110T XL	8J	265	788	1060	2337	340/50	---	BSW	✓ ✓ ✓
265/45R20	108T XL	9J	266	746	1000	2205	340/50	---	BSW	✓ ✓ ✓
265/50R20	107T	8 1/2J	277	774	975	2149	300/44	---	BSW	✓ ✓ ✓
275/35R20	102T XL	9 1/2J	278	700	850	1874	340/50	---	BSW	✓ ✓ ✓
275/40R20	102T	9 1/2J	278	728	850	1874	300/44	---	BSW	✓ ✓ ✓
275/45R20	110T XL	9J	273	756	1060	2337	340/50	---	BSW	✓ ✓ ✓
275/50R20	113T XL	8 1/2J	284	784	1150	2535	340/50	---	BSW	✓ ✓ ✓
285/50R20	112T	9J	297	794	1120	2469	300/44	---	BSW	✓ ✓ ✓
305/40R20	112T XL	11J	313	752	1120	2469	340/50	---	BSW	✓ ✓ ✓
315/35R20	106T	11J	320	728	950	2094	300/44	---	BSW	✓ ✓ ✓
255/40R21	102T XL	9J	260	737	850	1874	340/50	---	BSW	✓ ✓ ✓
255/45R21	106T XL	8 1/2J	255	763	950	2094	340/50	---	BSW	✓ ✓ ✓
265/45R21	108T XL	9J	266	771	1000	2205	340/50	---	BSW	✓ ✓ ✓
275/35R21	103T XL	9 1/2J	278	725	875	1929	340/50	---	BSW	✓ ✓ ✓

SIZE	LI/SI	Rim	SW (mm)	OD (mm)	Load Index (kg)	Max Pressure (Lbs)	Max Pressure Kpa/Psi	UTQG	Sidewall	
275/40R21	107T XL	9 1/2J	278	753	975	2149	340/50	---	BSW	✓ ✓ ✓
275/45R21	110T XL	9J	273	781	1060	2337	340/50	---	BSW	✓ ✓ ✓
285/35R21	105T XL	10J	290	733	925	2039	340/50	---	BSW	✓ ✓ ✓
285/40R21	109T XL	10J	290	761	1030	2271	340/50	---	BSW	✓ ✓ ✓
285/45R21	113T XL	9 1/2J	285	789	1150	2535	340/50	---	BSW	✓ ✓ ✓
295/35R21	107T XL	10 1/2J	301	739	975	2149	340/50	---	BSW	✓ ✓ ✓
295/40R21	107T	10 1/2J	301	769	975	2149	300/44	---	BSW	✓ ✓ ✓
315/30R21	105T XL	11J	320	723	925	2039	340/50	---	BSW	✓ ✓ ✓
315/35R21	111T XL	11J	320	753	1090	2403	340/50	---	BSW	✓ ✓ ✓
315/40R21	111T	11J	320	785	1090	2403	300/44	---	BSW	✓ ✓ ✓
265/40R22	106T XL	9 1/2J	271	771	950	2094	340/50	---	BSW	✓ ✓ ✓
275/35R22	104T XL	9 1/2J	278	751	900	1984	340/50	---	BSW	✓ ✓ ✓
275/40R22	107T XL	9 1/2J	278	779	975	2149	340/50	---	BSW	✓ ✓ ✓
275/50R22	115T XL	8 1/2J	284	835	1215	2679	340/50	---	BSW	✓ ✓ ✓
285/35R22	106T XL	10J	290	759	950	2094	340/50	---	BSW	✓ ✓ ✓
285/40R22	110T XL	10J	290	787	1060	2337	340/50	---	BSW	✓ ✓ ✓
285/45R22	114T XL	9 1/2J	285	815	1180	2601	340/50	---	BSW	✓ ✓ ✓
315/30R22	107T XL	11J	320	749	975	2149	340/50	---	BSW	✓ ✓ ✓
315/35R22	111T XL	11J	320	779	1090	2403	340/50	---	BSW	✓ ✓ ✓
325/35R22	114T XL	11 1/2J	331	787	1180	2601	340/50	---	BSW	✓ ✓ ✓
325/40R22	114T	11 1/2J	331	819	1180	2601	300/44	---	BSW	✓ ✓ ✓

WINTERVORHUT STUD III

HP UHP A/S EV VAN H/T A/T R/T M/T WINTER **STUDED**

ICE GRIP	(10/10)
SNOW GRIP	(9/10)
SILENT & COMFORT PERFORMANCE	(9/10)
FUEL ECONOMY PERFORMANCE	(7/10)
MILEAGE PERFORMANCE	(8/10)



STUDED



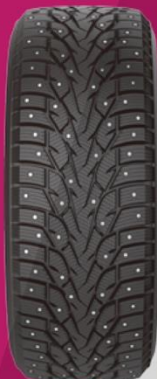
STUDED DESIGN

RANGE
12 - 20

ASPECT RATIO
40 - 70

SPEED SYMBOL
T - (V)

PLY RATING
8 - 10



ULTRA-HIGH ICE GROUND PERFORMANCE



SAFETY PERFORMANCE



HIGH SPEED CONTROL



QUIET AND COMFORT



NAIL HOLE PROTECTION DEVICE

SIZE	L/SI	PR	Rim	SW (mm)	OD (mm)	Load Index (kg)	Load Index (Lbs)	Max Pressure Kpa/Psi	Sidewall	HP	UHP	A/S	EV	VAN	H/T	A/T	R/T	M/T	WINTER	STUDED	
215/70R16	100T	-	6 1/2J	221	708	800	1764	300/44	BSW	✓	✓	✓									
225/70R16	107T XL	-	6 1/2J	228	722	975	2149	340/50	BSW	✓	✓	✓									
235/70R16	106T	-	7J	240	736	950	2094	300/44	BSW	✓	✓	✓									
245/70R16	111T XL	-	7J	248	750	1090	2403	340/50	BSW	✓	✓	✓									
245/75R16	111T	-	7J	248	774	1090	2403	300/44	BSW	✓	✓	✓									
215/60R17	100T XL	-	6 1/2J	221	690	800	1764	340/50	BSW	✓	✓	✓									
215/65R17	103T XL	-	6 1/2J	221	712	875	1929	340/50	BSW	✓	✓	✓									
225/60R17	103T XL	-	6 1/2J	228	702	875	1929	340/50	BSW	✓	✓	✓									
225/65R17	106T XL	-	6 1/2J	228	724	950	2094	340/50	BSW	✓	✓	✓									
235/65R17	108T XL	-	7J	240	738	1000	2205	340/50	BSW	✓	✓	✓									
265/65R17	112T	-	8J	272	776	1120	2469	300/44	BSW	✓	✓	✓									
265/70R17	115T	-	8J	272	804	1215	2679	300/44	BSW	✓	✓	✓									
225/60R18	104T XL	-	6 1/2J	228	727	900	1984	340/50	BSW	✓	✓	✓									
235/55R18	104T XL	-	7 1/2J	245	715	900	1984	340/50	BSW	✓	✓	✓									
235/60R18	103T	-	7J	240	739	875	1929	300/44	BSW	✓	✓	✓									
235/65R18	106T	-	7J	240	763	950	2094	300/44	BSW	✓	✓	✓									
245/60R18	109T XL	-	7J	248	751	1030	2271	340/50	BSW	✓	✓	✓									
255/55R18	109T XL	-	8J	265	737	1030	2271	340/50	BSW	✓	✓	✓									
265/60R18	114T XL	-	8J	272	775	1180	2601	340/50	BSW	✓	✓	✓									
275/65R18	116T	-	8J	279	815	1250	2756	300/44	BSW	✓	✓	✓									
285/60R18	116T	-	8 1/2J	292	799	1250	2756	300/44	BSW	✓	✓	✓									
235/55R19	105T XL	-	7 1/2J	245	741	925	2039	340/50	BSW	✓	✓	✓									
245/55R19	107T XL	-	7 1/2J	253	753	975	2149	340/50	BSW	✓	✓	✓									
255/55R19	107T	-	8J	265	763	975	2149	300/44	BSW	✓	✓	✓									
275/55R20	117T XL	-	8 1/2J	284	810	1285	2833	340/50	BSW	✓	✓	✓									
275/60R20	115T	-	8J	279	838	1215	2679	300/44	BSW	✓	✓	✓									
185/75R16C	104/102R	8	5J	184	684	900/850	1985/1875	475/69	BSW	✓	✓	✓									
195/75R16C	107/105R	8	5 1/2J	196	698	975/925	2150/2040	475/69	BSW	✓	✓	✓									
225/75R16C	116/114R	8	6J	223	744	1250/1180	2755/2600	475/69	BSW	✓	✓	✓									
235/65R16C	121/119R	10	7J	240	712	1450/1360	3195/3000	575/83	BSW	✓	✓	✓									
LT225/75R16	115/112Q	10	6J	223	744	1215/1120	2680/2470	550/80	BSW	✓	✓	✓									
LT245/75R16	120/116Q	10	7J	248	774	1380/1260	3042/2778	550/80	BSW	✓	✓	✓									
LT265/70R17	12V/118Q	10	8J	272	804	1450/1320	3195/2910	550/80	BSW	✓	✓	✓									
LT275/65R18	119/116Q	8	8J	279	815	1360/1250	3000/2755	450/65	BSW	✓	✓	✓									
LT275/65R18	123/120Q	10	8J	279	815	1550/1400	3415/3085	550/80	BSW	✓	✓	✓									
LT275/70R18	125/122Q	10	8J	279	843	1650/1500	3640/3305	550/80	BSW	✓	✓	✓									
LT275/70R18	12V/118Q	8	8J	279	843	1450/1320	3195/2910	450/65	BSW	✓	✓	✓									
LT275/60R20	119/116Q	8	8J	279	838	1360/1250	3000/2755	450/65	BSW	✓	✓	✓									
LT275/60R20	123/120Q	10	8J	279	838	1550/1400	3415/3085	550/80	BSW	✓	✓	✓									
LT275/66R20	126/123Q	10	8J	279	866	1700/1550	3750/3415	550/80	BSW	✓	✓	✓									
LT275/65R20	12V/118Q	8	8J	279	866	1450/1320	3195/2910	450/65	BSW	✓	✓	✓									