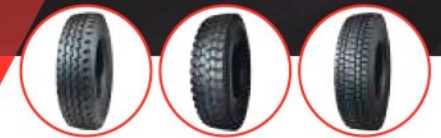


AULICE

.....
TRUCK & BUS TYRE
PROFESSIONAL MANUFACTURER

AULICE



Tire Direct
La nueva generación



TIRE DIRECT



/TIRE_DIRECT



/TIREDIRECTMX



TIRE DIRECT

COMPANY PROFILE

COMPANY PROFILE



CORPORATE CULTURE



01 SERVICE POLICY

USERS WILL BE PROVIDED WITH HIGH-QUALITY PRODUCTS AND EXCELLENT AFTER-SALES SERVICE PROCEDURES.

SERVICE PURPOSE 02

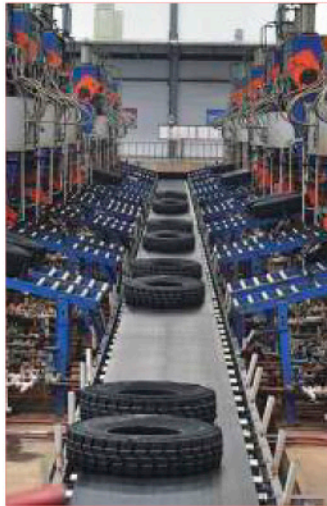
CUSTOMER SATISFACTION IS OUR ONLY CRITERION.

03 ENTERPRISE CORE VALUES

PASSIONATE
INNOVATIVE
RESPONSIBLE
COOPERATIVE
EXPERIENCED
INSIGHTFUL

WORKSHOP EQUIPMENT

CERTIFICATE OF HONOR



• ISO9001 CERTIFICATE



• ISO14001 CERTIFICATE



• GCC CERTIFICATE



• DOT CERTIFICATE



• CCC CERTIFICATE



• EXPORT CERTIFICATE



• LISTED RESERVE ENTERPRISES



• SNI CERTIFICATE



• ECE CERTIFICATE



• TOP 100 MANUFACTURING ENTERPRISES IN HUBEI

APPLICATION OF KEY PRODUCTS

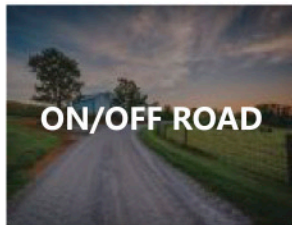
APPLICATION OF KEY PRODUCTS



LONG HAUL



REGIONAL



ON/OFF ROAD



**OFF ROAD
CONSTRUCTION
MINING**





PRODUCT INFORMATION

LONG HAUL

PRODUCT INTRODUCTION



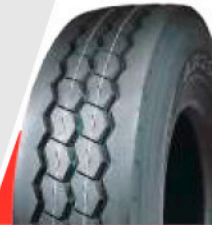
AR266

1. Widened tread design and wear-resistant tread formula brings long mileage.
2. Four circumferential grooves with variable angle design offers excellent high speed performance.
3. Reinforced belt steel wire ensures uniform wear.
4. Suitable for long-distance trucks and bus on steering wheel position and good roads such as highways.



Size	Ply Rating	Tread Depth (mm)	Load Index	Speed Symbol	KG(LBS.)Load Capacity		Pressure kPa(PSI)	Standard Rim
					Single	Dual		
12R22.5	16PR	15.5	150/147	K	3350(7385)	3075(6780)	830(120)	9.00
12R22.5	18PR	15.5	152/149	J	3550(7830)	3250(7160)	930(135)	9.00

PRODUCT INTRODUCTION



AR268

1. Widened tread design and wear-resistant tread formula brings long mileage.
2. Three circumferential grooves with variable angle design offers excellent high speed performance.
3. Reinforced belt steel wire design enhances life time of the tire.
4. Suitable for long-distance heavy-duty truck on all wheel positions and good roads such as highways.



Size	Ply Rating	Tread Depth (mm)	Load Index	Speed Symbol	KG(LBS.)Load Capacity		Pressure kPa(PSI)	Standard Rim
					Single	Dual		
12R22.5	16PR	16.0	150/147	K	3350(7385)	3075(6780)	830(120)	9.00
12R22.5	18PR	16.0	152/149	J	3550(7830)	3250(7160)	930(135)	9.00

PRODUCT INTRODUCTION



AR216

1. A light-duty tubeless tire used in the guide wheel position, suitable for long-distance use such as high-speed and national roads.
2. It has the characteristics of puncture resistance, safety and wear resistance. The tire tread adopts a high-saturation symmetrical pattern design, which greatly improves the driving force and grip performance of the tire, followed by excellent traction performance and drainage performance, which makes its comprehensive performance at high speed even better.
3. The cushion rubber and tread adopts a unique wear-resistant formula, which provides excellent mileage and wear resistance, not only low heat generation, low thermal resistance, but also environmental protection and fuel saving, and better bearing performance.



Size	Ply Rating	Tread Depth (mm)	Load Index	Speed Symbol	KG(LBS.)Load Capacity		Pressure kPa(PSI)	Standard Rim
					Single	Dual		
12R22.5	16PR	15.5	150/147	K	3350(7385)	3075(6780)	830(120)	9.00
12R22.5	18PR	15.5	152/149	K	3550(7830)	3250(7160)	930(135)	9.00

PRODUCT INFORMATION

PRODUCT INFORMATION



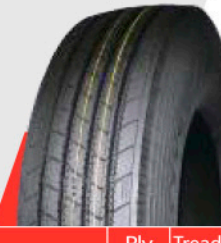
PRODUCT INTRODUCTION

- 1.Suitable for middle-long distance on good road.
- 2.Reinforced bead design provides better over loading performance.
- 3.Special tread compound formula reduces irregular wear.
- 4.Four circumferential grooves brings better heat-dissipation.

AR/AW737



Size	Ply Rating	Tread Depth (mm)	Load Index	Speed Symbol	KG(LBS.)Load Capacity		Pressure kPa(PSI)	Standard Rim
					Single	Dual		
11R22.5	14PR	16.5	144/142	K	2800(6170)	2650(5840)	720(105)	8.25
11R22.5	16PR	16.5	146/143	K	3000(6610)	2725(6005)	830(120)	8.25
12R22.5	16PR	16.5	150/147	K	3350(7385)	3075(6780)	830(120)	9.00
12R22.5	18PR	16.5	152/149	K	3550(7830)	3250(7160)	930(135)	9.00
11R24.5	16PR	14.5	146/143	M	3000(6610)	2725(6005)	830(120)	8.25
295/80R22.5	16PR	14.5	146/143	M	3000(6610)	2725(6005)	830(120)	9.00



PRODUCT INTRODUCTION

- 1.Suitable for middle-long distance on good road.
- 2.Reinforced bead design provides better over loading performance.
- 3.Special tread compound formula reduces irregular wear.
- 4.Four circumferential grooves brings better heat-dissipation.

AW767



Size	Ply Rating	Tread Depth (mm)	Load Index	Speed Symbol	KG(LBS.)Load Capacity		Pressure kPa(PSI)	Standard Rim
					Single	Dual		
11R22.5	14PR	14.5	144/141	M	2800(6170)	2650(5840)	720(105)	8.25
11R22.5	16PR	14.5	146/143	M	3000(6610)	2725(6005)	830(120)	8.25
295/80R22.5	16PR	15.0	150/147	M	3350(7390)	3075(6780)	830(120)	9.0
295/80R22.5	18PR	15.0	152/149	M	3550(7830)	3250(7160)	900(130)	9.0
315/80R22.5	18PR	15.0	154/151	L	3750(8270)	3450(7610)	830(120)	9.0
315/80R22.5	20PR	15.0	157/154	L	4125(9100)	3750(8270)	900(130)	9.0



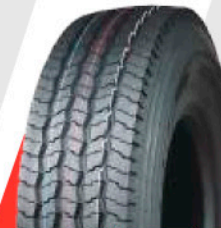
PRODUCT INTRODUCTION

- 1.Suitable for middle-long distance on good road.
- 2.Reinforced bead design provides better over loading performance.
- 3.Special tread compound formula reduces irregular wear.
- 4.Four circumferential grooves brings better heat-dissipation.

AR766



Size	Ply Rating	Tread Depth (mm)	Load Index	Speed Symbol	KG(LBS.)Load Capacity		Pressure kPa(PSI)	Standard Rim
					Single	Dual		
12R22.5	16PR	16.0	150/147	K	3350(7385)	3075(6780)	830(120)	9.00
12R22.5	18PR	16.0	152/149	K	3550(7830)	3250(7160)	930(135)	9.00



PRODUCT INTRODUCTION

- 1.Widened tread design and wear-resistant tread formula bring long mileage.
- 2.Four zigzag grooves with special shallow groove design provide excellent handling.
- 3.Optimized tire contour design through mechanical model brings low rolling resistance and fewer fuel consumption.
- 4.Suitable for long-distance heavy-duty truck on all wheel positions and good roads such as highways.

AR900



Size	Ply Rating	Tread Depth (mm)	Load Index	Speed Symbol	KG(LBS.)Load Capacity		Pressure kPa(PSI)	Standard Rim
					Single	Dual		
12R22.5	16PR	14.4	150/147	K	3350(7385)	3075(6780)	830(120)	9.00
12R22.5	18PR	14.4	152/149	J	3550(7830)	3250(7160)	930(135)	9.00



PRODUCT INTRODUCTION

- 1.Suitable for wheel position of middle/long distance buses and steering and trailer position of trucks on good road conditions.
- 2.linear tread grooves provides excellent directional driving performance and prevents uneven tire wear.
- 3.Comfortable and safer driving experience, in addition to longer mileage.

AW797



Size	Ply Rating	Tread Depth (mm)	Load Index	Speed Symbol	KG(LBS.)Load Capacity		Pressure kPa(PSI)	Standard Rim
					Single	Dual		
315/80R22.5	20PR	15.5	157/154	M	4125(9100)	3750(8270)	900(130)	9.00



PRODUCT INTRODUCTION

- 1.The carcass structure adopts a multi-layer reinforced design, and the bead is reinforced to effectively improve the tire's load-resistant performance.
2. There are multiple wavy drainage grooves on the tread, which meet the needs of drainage and steering, while providing better driving and grip.
- 3.The new low-resistance formula is adopted to improve the heat dissipation performance of the tread rubber and effectively reduce the fuel consumption per kilometer.

HL138



Size	Ply Rating	Tread Depth (mm)	Load Index	Speed Symbol	KG(LBS.)Load Capacity		Pressure kPa(PSI)	Standard Rim
					Single	Dual		
12R22.5	16PR	16.0	150/147	K	3350(7385)	3075(6780)	830(120)	9.00
12R22.5	18PR	16.0	152/149	J	3550(7830)	3250(7160)	930(135)	9.00

PRODUCT INFORMATION

PRODUCT INTRODUCTION

- 1.Deep original tread depth for long tread life and high traction.
- 2.Reversible sidewall protector ribs shield against curbing damage to enhance retreadability.
- 3.On-highway drive radial with very high load capacity.



AW811



Size	Ply Rating	Tread Depth (mm)	Load Index	Speed Symbol	KG(LBS.)Load Capacity		Pressure kPa(PSI)	Standard Rim
					Single	Dual		
11R22.5	16PR	21.0	146/143	M	3000(6610)	2725(6005)	830(120)	9.00

PRODUCT INTRODUCTION

- 1.Built to deliver extremely long mileage and uniform wear on drive axles.
- 2.Mega-deep 26/32 tread depth for mega-long original tread life.
- 3.Tough tread compound resists block squirm to combat irregular wear.
- 4.Large aggressive blocks bite into soft surfaces for excellent traction.
- 5.Center groove platforms fight stone retention to enhance casing durability.



AW817



Size	Ply Rating	Tread Depth (mm)	Load Index	Speed Symbol	KG(LBS.)Load Capacity		Pressure kPa(PSI)	Standard Rim
					Single	Dual		
295/80R22.5	16PR	21.0	146/143	M	3000(6610)	2725(6005)	830(120)	9.00
11R22.5	16PR	21.0	146/143	M	3000(6610)	2725(6005)	830(120)	8.25
11R24.5	16PR	21.0	146/143	M	3000(6610)	2725(6005)	830(120)	8.25

PRODUCT INTRODUCTION

- 1.Deep and compacted channels for better water dissipation.
- 2.Improved rubber compound delivers heat control and low overall abrasion wear.
- 3.Super traction and braking characteristics.
- 4.Surface tread designed for long life cycle.



AW113



Size	Ply Rating	Tread Depth (mm)	Load Index	Speed Symbol	KG(LBS.)Load Capacity		Pressure kPa(PSI)	Standard Rim
					Single	Dual		
385/65R22.5	18PR	15.5	158	K	4250(9370)	3875(8540)	830(120)	11.75
385/65R22.5	20PR	15.5	160	K	4500(9930)	4125(9090)	900(130)	11.75

PRODUCT INFORMATION

PRODUCT INTRODUCTION

- 1.Suitable for middle-long distance on good road.
- 2.Reinforced bead design provides better over loading performance.
- 3.Special tread compound formula reduces irregular wear.
- 4.Four circumferential grooves brings better heat-dissipation.



AR916



Size	Ply Rating	Tread Depth (mm)	Load Index	Speed Symbol	KG(LBS.)Load Capacity		Pressure kPa(PSI)	Standard Rim
					Single	Dual		
12R22.5	16PR	16.0	150/147	K	3350(7385)	3075(6780)	830(120)	9.00
12R22.5	18PR	16.0	152/149	J	3550(7830)	3250(7160)	930(135)	9.00

PRODUCT INTRODUCTION

- 1.Special pattern design and tread compound formula provide excellent heat dissipation, long mileage and good wear resistance.
- 2.Suitable for mid-long distance on all kinds of good road.



AR918



Size	Ply Rating	Tread Depth (mm)	Load Index	Speed Symbol	KG(LBS.)Load Capacity		Pressure kPa(PSI)	Standard Rim
					Single	Dual		
12R22.5	16PR	16.0	150/147	K	3350(7385)	3075(6780)	830(120)	9.00
12R22.5	18PR	16.0	152/149	J	3550(7830)	3250(7160)	930(135)	9.00

PRODUCT INTRODUCTION

- 1.Innovative lug pattern design.
- 2.Special tread compound formula brings better wear resistance.
- 3.Suitable for mid-long distance on all kinds of good road.
- 4.It has superior driving and braking performance as well as ground grip.



AW787



Size	Ply Rating	Tread Depth (mm)	Load Index	Speed Symbol	KG(LBS.)Load Capacity		Pressure kPa(PSI)	Standard Rim
					Single	Dual		
11R22.5	14PR	14.5	144/141	M	2800(6170)	2650(6780)	720(105)	8.25
11R22.5	16PR	14.5	146/143	M	3000(6610)	2725(6005)	830(120)	8.25
295/80R22.5	16PR	15.5	150/147	M	3350(7390)	3075(6780)	830(120)	9.00
295/80R22.5	18PR	15.5	152/149	M	3550(7830)	3250(7160)	900(130)	9.00

PRODUCT INFORMATION

PRODUCT INFORMATION



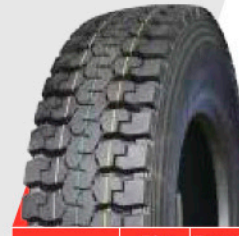
PRODUCT INTRODUCTION

1. Low rolling resistance and less fuel consumption.
2. Three circumferential grooves ensure excellent traction, ground grip and wet skid resistance.

AR731



Size	Ply Rating	Tread Depth (mm)	Load Index	Speed Symbol	KG(LBS.)Load Capacity		Pressure kPa(PSI)	Standard Rim
					Single	Dual		
12.00R24	18PR	16.0	158/155	K	4250(9370)	3875(8540)	830(120)	8.50
12.00R24	20PR	16.0	160/157	K	4500(9920)	4125(9090)	900(130)	8.50
12R22.5	16PR	16.0	150/147	K	3350(7385)	3075(6780)	830(120)	9.00
12R22.5	18PR	16.0	152/149	K	3550(7830)	3250(7160)	930(135)	9.00



PRODUCT INTRODUCTION

1. Tread compound formula provides super wear resistance, excellent traction and braking.
2. Suitable for mid-long distance transport for state and highway road.

AR868



Size	Ply Rating	Tread Depth (mm)	Load Index	Speed Symbol	KG(LBS.)Load Capacity		Pressure kPa(PSI)	Standard Rim
					Single	Dual		
12R22.5	16PR	18.5	150/147	K	3350(7385)	3075(6780)	830(120)	9.00
12R22.5	18PR	18.5	152/149	K	3550(7830)	3250(7160)	930(135)	9.00



PRODUCT INTRODUCTION

1. It is suitable for guide wheel position, used in light-duty tubeless tires on high-speed, national roads and other long-distance roads. It has the characteristics of puncture resistance, safety and wear resistance.
2. The tread uses a highly saturated pattern design, which has better driving performance and grip performance;
3. Specialized design of the sidewall, extremely high flexural resistance and strong comfort, thus prolonging the service life of the tire;
4. The use of low heat build-up tread base rubber and deepened grooves can not only reduce heat build-up, but also make it have excellent durability, environmental protection and fuel saving.

AR218



Size	Ply Rating	Tread Depth (mm)	Load Index	Speed Symbol	KG(LBS.)Load Capacity		Pressure kPa(PSI)	Standard Rim
					Single	Dual		
12R22.5	16PR	15.5	150/147	K	3350(7385)	3075(6780)	830(120)	9.00
12R22.5	18PR	15.5	152/149	K	3550(7830)	3250(7160)	930(135)	9.00



PRODUCT INTRODUCTION

1. Low rolling resistance and less fuel consumption.
2. Three circumferential grooves ensure excellent traction, ground grip and wet skid resistance.

WR223



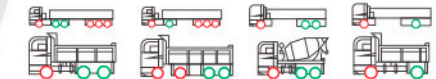
Size	Ply Rating	Tread Depth (mm)	Load Index	Speed Symbol	KG(LBS.)Load Capacity		Pressure kPa(PSI)	Standard Rim
					Single	Dual		
12R22.5	16PR	17.5	150/147	L	3350(7385)	3075(6780)	830(120)	9.00
12R22.5	18PR	17.5	152/149	L	3550(7830)	3250(7160)	930(135)	9.00



PRODUCT INTRODUCTION

1. Innovative pattern design applied for mid-short distance on mixed road obtains superb loading capability.
2. Ultra-large block design provides super resistance to tearing and puncturing brings excellent traction and braking force enhances stability and reduces irregular wear.

AR888



Size	Ply Rating	Tread Depth (mm)	Load Index	Speed Symbol	KG(LBS.)Load Capacity		Pressure kPa(PSI)	Standard Rim
					Single	Dual		
12R22.5	16PR	20.0	150/147	D	3350(7385)	3075(6780)	830(120)	9.00
12R22.5	18PR	20.0	152/149	D	3550(7830)	3250(7160)	930(135)	9.00



PRODUCT INTRODUCTION

1. Innovative pattern design applied for mid-short distance on mixed road obtains superb loading capability.
2. Ultra-large block design provides super resistance to tearing and puncturing brings excellent traction and braking force enhances stability and reduces irregular wear.

AR878



Size	Ply Rating	Tread Depth (mm)	Load Index	Speed Symbol	KG(LBS.)Load Capacity		Pressure kPa(PSI)	Standard Rim
					Single	Dual		
12R22.5	16PR	18.0	150/147	F	3350(7385)	3075(6780)	830(120)	9.00
12R22.5	18PR	18.0	152/149	F	3550(7830)	3250(7160)	930(135)	9.00

PRODUCT INFORMATION

PRODUCT INFORMATION



PRODUCT INTRODUCTION

1. Tread compound formula provides super wear resistance, excellent traction and braking.
2. Suitable for mid-long distance transport for state and highway road.

AR815



Size	Ply Rating	Tread Depth (mm)	Load Index	Speed Symbol	KG(LBS.) Load Capacity		Pressure kPa(PSI)	Standard Rim
					Single	Dual		
12R22.5	16PR	17.5	150/147	K	3350(7385)	3075(6780)	830(120)	9.0
12R22.5	18PR	17.5	152/149	L	3550(7830)	3250(7160)	930(135)	9.0



PRODUCT INTRODUCTION

1. Tread compound formula provides super wear resistance, excellent traction and braking.
2. Deep rib and narrow lug pattern offers excellent heat dissipation, ground grip and wet skid resistance.
3. Suitable for mid-long distance transport for state and highway road.

AR818



Size	Ply Rating	Tread Depth (mm)	Load Index	Speed Symbol	KG(LBS.) Load Capacity		Pressure kPa(PSI)	Standard Rim
					Single	Dual		
11R22.5	14PR	22.0	144/142	K	2800(6170)	2650(5840)	720(105)	8.25
11R22.5	16PR	22.0	146/143	K	3000(6610)	2725(6005)	830(120)	8.25
12R22.5	16PR	22.5	150/147	K	3350(7385)	3075(6780)	830(120)	9.00
12R22.5	18PR	22.5	152/149	K	3550(7830)	3250(7160)	930(135)	9.00



PRODUCT INTRODUCTION

1. Super wearable tread formula provides long mileage of low fuel consumption.
2. Excellent stability and self cleaning performance.
3. Suitable for mid-long distance on state and highway road.

AR819



Size	Ply Rating	Tread Depth (mm)	Load Index	Speed Symbol	KG(LBS.) Load Capacity		Pressure kPa(PSI)	Standard Rim
					Single	Dual		
12R22.5	16PR	22.0	150/147	K	3350(7385)	3075(6780)	830(120)	9.00
12R22.5	18PR	22.0	152/149	K	3550(7830)	3250(7160)	930(135)	9.00
315/80R22.5	18PR	20.0	154/151	K	3750(8270)	3450(7610)	830(120)	9.00
315/80R22.5	20PR	20.0	157/154	K	4125(8270)	3750(8270)	900(130)	9.00



PRODUCT INTRODUCTION

1. Three longitudinal curved ditch multi-layer drainage design provides a stronger tire side skid ability.
2. The new anti-partial wear horizontal anti-skid pattern balances the distribution of sports stress and makes the wear more balanced.
3. A high-strength rubber vulcanization technology is adopted to increase the overall toughness of the tread and make it more resistant to punctures.

HL139



Size	Ply Rating	Tread Depth (mm)	Load Index	Speed Symbol	KG(LBS.) Load Capacity		Pressure kPa(PSI)	Standard Rim
					Single	Dual		
12R22.5	16PR	18.0	150/147	K	3350(7385)	3075(6780)	830(120)	9.00
12R22.5	18PR	18.0	152/149	K	3550(7830)	3250(7160)	930(135)	9.00



PRODUCT INTRODUCTION

1. The design of the meandering wave groove bottom can improve the tire's grip and anti-stone trapping ability. The high-saturation pattern design makes the tire more wear-resistant.
2. The overall profile of the tire is optimized to make the pressure distribution more uniform and bring safer driving.
3. The high wear-resistant tread formula can comprehensively improve the mileage.

HL229



Size	Ply Rating	Tread Depth (mm)	Load Index	Speed Symbol	KG(LBS.) Load Capacity		Pressure kPa(PSI)	Standard Rim
					Single	Dual		
12R22.5	16PR	18.2	150/147	K	3350(7385)	3075(6780)	830(120)	9.00
12R22.5	18PR	18.2	152/149	K	3550(7830)	3250(7160)	930(135)	9.00



PRODUCT INTRODUCTION

1. Open type shoulders improve the heat dissipation performance of the tire and provide a longer service life.
2. The single-guided pattern design has better anti-uniform wear resistance, better driving force and control performance.
3. The shoulder reinforcement block design and special tread formula reduce uneven tire wear and have stronger wear resistance.

HL239



Size	Ply Rating	Tread Depth (mm)	Load Index	Speed Symbol	KG(LBS.) Load Capacity		Pressure kPa(PSI)	Standard Rim
					Single	Dual		
12R22.5	16PR	20.5	150/147	K	3350(7385)	3075(6780)	830(120)	9.00
12R22.5	18PR	20.5	152/149	K	3550(7830)	3250(7160)	930(135)	9.00

PRODUCT INFORMATION



PRODUCT INTRODUCTION

- 1.Special pattern design and tread compound formula provide excellent heat dissipation, long mileage and good wear resistance.
- 2.Suitable for mid-long distance on all kinds of good road.

AR999



Size	Ply Rating	Tread Depth (mm)	Load Index	Speed Symbol	KG(LBS.)Load Capacity		Pressure kPa(PSI)	Standard Rim
					Single	Dual		
12R22.5	16PR	16.0	150/147	K	3350(7385)	3075(6780)	830(120)	9.00
12R22.5	18PR	16.0	152/149	J	3550(7830)	3250(7160)	930(135)	9.00

PRODUCT INTRODUCTION

- 1.Ultra-wide tread design and wear-resistant compound provide longer mileage.
- 2.Double layer tread design improves wear resistance, generates less heat, improves tyre's lifetime.
- 3.Interlocking design of corrugated 3D steel sheets helps to improve anti-eccentric wear performance and superior wet-slip performance.
- 4.Staggered design of longitudinal and lateral blocks generates less noise and improve driving experiences while driving.



AW816



Size	Ply Rating	Tread Depth (mm)	Load Index	Speed Symbol	KG(LBS.)Load Capacity		Pressure kPa(PSI)	Standard Rim
					Single	Dual		
315/80R22.5	20PR	20.0	157/154	L	4125(9100)	3750(8270)	900(130)	9.00

PRODUCT INTRODUCTION

- 1.Innovative pattern design applied for mid-short distance on mixed road obtains superb loading capability.
- 2.Ultra-large block design provides super resistance to tearing and puncturing brings excellent traction and braking force enhances stability and reduces irregular wear.



AW878



Size	Ply Rating	Tread Depth (mm)	Load Index	Speed Symbol	KG(LBS.)Load Capacity		Pressure kPa(PSI)	Standard Rim
					Single	Dual		
315/80R22.5	20PR	18.0	157/154	K	4125(9100)	3750(8270)	900(130)	9.00
315/80R22.5	18PR	18.0	154/151	K	3750(8270)	3450(7610)	830(120)	9.00

REGIONAL



PRODUCT INFORMATION

PRODUCT INFORMATION



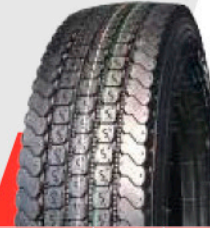
PRODUCT INTRODUCTION

- 1.The unique tread compound formula reduces irregular wear,extend tire life time.
2. Upgraded pattern design provides excellent ground grip and outstanding wet skid resistance.
3. Better heat dissipation, safer driving performance.
- 4.Superb reinforced tire bead design ensures a better loading capacity on mixed road.

AR1017/101



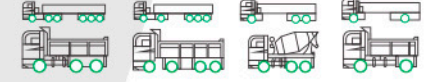
Size	Ply Rating	Tread Depth (mm)	Load Index	Speed Symbol	KG(LBS.)Load Capacity		Pressure kPa(PSI)	Standard Rim
					Single	Dual		
6.50R16LT	12PR	12.0	110/105	L	1060(2335)	925(2040)	670(100)	5.5F
7.00R16LT	14PR	12.0	118/114	L	1320(2910)	1180(2600)	770(110)	5.5F
7.50R16LT	14PR	13.5	122/118	L	1500(3305)	1320(2910)	770(110)	6.0G
8.25R16LT	14PR	14.0	126/122	L	1700(3750)	1500(3305)	670(100)	6.5H
8.25R16LT	16PR	14.0	128/124	L	1800(3970)	1600(3525)	770(110)	6.5H
8.25R20	14PR	17.0	136/134	K	2240(4940)	2120(4675)	830(120)	6.5
8.25R20	16PR	17.0	139/137	K	2430(5360)	2300(5070)	930(135)	6.5
9.00R20	14PR	17.5	141/139	K	2575(5675)	2430(5355)	790(115)	7.0
9.00R20	16PR	17.5	144/142	K	2800(6175)	2650(5840)	900(130)	7.0
10.00R20	16PR	16.0	146/143	K	3000(6610)	2725(6010)	830(120)	7.5
10.00R20	18PR	16.0	149/146	K	3250(7160)	3000(6610)	930(135)	7.5
11.00R20	16PR	15.5	150/147	K	3350(7385)	3075(6780)	830(120)	8.0
11.00R20	18PR	15.5	152/149	K	3550(7830)	3250(7160)	930(135)	8.0
12.00R20	18PR	15.5	154/151	K	3750(8270)	3450(7610)	830(120)	8.5
12.00R20	20PR	15.5	156/153	K	4000(8820)	3650(8050)	900(130)	8.5



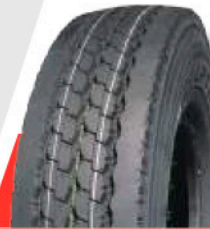
PRODUCT INTRODUCTION

- 1.Special pattern design provides better wear resistance, superb wet-ground gripping and low noise.
- 2.Optimized tire contour design: brings low rolling resistance ang fuel consumption.
- 3.Special tread compound formula to improve tire durability.
- 4.Suitable for light truck on all wheel position and good pavement.

AR111



Size	Ply Rating	Tread Depth (mm)	Load Index	Speed Symbol	KG(LBS.)Load Capacity		Pressure kPa(PSI)	Standard Rim
					Single	Dual		
6.50R16LT	12PR	12.0	110/105	L	1060(2335)	925(2040)	670(100)	5.50F
7.00R16LT	14PR	12.0	118/114	K	1320(2910)	1180(2600)	770(110)	5.50F
7.50R16LT	14PR	13.5	122/118	L	1500(3305)	1320(2910)	770(110)	6.00G
8.25R16LT	16PR	14.0	128/124	L	1800(3970)	1600(3525)	770(110)	6.50H



PRODUCT INTRODUCTION

- 1.Special tread compound formula brings better wear resistance.
- 2.Suitable for mid-long distance on all kinds of good road.
- 3.It has superior driving and braking force as well as ground grip.

AR188



Size	Ply Rating	Tread Depth (mm)	Load Index	Speed Symbol	KG(LBS.)Load Capacity		Pressure kPa(PSI)	Standard Rim
					Single	Dual		
11.00R20	16PR	16.0	150/147	J	3350(7385)	3075(6780)	830(120)	8.00
11.00R20	18PR	16.0	152/149	J	3550(7830)	3250(7160)	930(135)	8.00



PRODUCT INTRODUCTION

- 1.Classic three circumferential pattern design provides superior overall handling performance.
- 2.Unique semi-open shoulder groove design offers optimum heat dissipation.
- 3.Special tread formula provides excellent wear resistance and tear resistance.
- 4.Variable pitch pattern design brings low noise and comfort performance.
- 5.Suitable for short and medium distance truck on all wheel positions and mixed pavement.

AW002



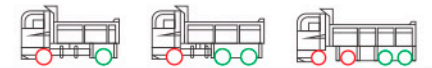
Size	Ply Rating	Tread Depth (mm)	Load Index	Speed Symbol	KG(LBS.)Load Capacity		Pressure kPa(PSI)	Standard Rim
					Single	Dual		
12.00R24	18PR	14.5	158/155	K	4250(9370)	3875(8540)	830(120)	8.5
12.00R24	20PR	14.5	160/157	K	4500(9920)	4125(9090)	900(130)	8.5
11R22.5	14PR	14.5	144/141	K	2800(6170)	2650(5840)	720(105)	8.25
11R22.5	16PR	14.5	146/143	K	3000(6610)	2725(6005)	830(120)	8.25
315/80R22.5	18PR	15.5	154/151	K	3750(8270)	3450(7610)	830(120)	9.0
315/80R22.5	20PR	15.5	157/154	K	4125(9100)	3750(8270)	900(130)	9.0



PRODUCT INTRODUCTION

- 1.Distinctive reinforced bead ensure excellent added loading capacity.
- 2.Unique tread compound formula offers long mileage.
- 3.Advanced tubeless tire with long service life.

AW003



Size	Ply Rating	Tread Depth (mm)	Load Index	Speed Symbol	KG(LBS.)Load Capacity		Pressure kPa(PSI)	Standard Rim
					Single	Dual		
11R22.5	14PR	14.5	144/141	K	2800(6170)	2650(5840)	720(105)	8.25
11R22.5	16PR	14.5	146/143	K	3000(6610)	2725(6005)	830(120)	8.25
12.00R24	18PR	14.8	158/155	K	4250(9370)	3875(8540)	830(120)	8.5
12.00R24	20PR	14.8	160/157	K	4500(9920)	4125(9090)	900(130)	8.5

PRODUCT INFORMATION



AR112

PRODUCT INTRODUCTION

- 1.Special tread compound formula reduces irregular wear, extend longer life time on good road.
- 2.Open shoulder grooves design enhances ground grip , heat-dissipation and self-cleaning performance.



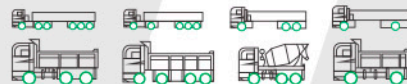
Size	Ply Rating	Tread Depth (mm)	Load Index	Speed Symbol	KG(LBS.)Load Capacity		Pressure kPa(PSI)	Standard Rim
					Single	Dual		
6.50R16LT	12PR	10.5	110/105	G	1060(2335)	925(2040)	670(100)	5.50F
7.00R16LT	14PR	11.5	118/114	G	1320(2910)	1180(2600)	770(110)	5.50F
7.50R16LT	14PR	12.0	122/118	G	1500(3305)	1320(2910)	770(110)	6.00G
8.25R16LT	16PR	14.0	128/124	G	1800(3970)	1600(3525)	770(110)	6.50H
11.00R20	16PR	16.5	150/147	J	3350(7385)	3075(6780)	830(120)	8.0
11.00R20	18PR	16.5	152/149	J	3550(7830)	3250(7160)	930(135)	8.0
12.00R20	18PR	16.5	154/151	J	3750(8270)	3450(7610)	830(120)	8.5
12.00R20	20PR	16.5	156/153	J	4000(8820)	3650(8050)	900(130)	8.5
12R22.5	16PR	20.0	150/147	J	3350(7385)	3075(6780)	830(120)	9.0
12R22.5	18PR	20.0	152/149	J	3550(7830)	3250(7160)	930(135)	9.0



AW001

PRODUCT INTRODUCTION

- 1.Three longitudinal zigzag grooves and open shoulder design provides excellent traction and handling.
- 2.High strength skeleton material adopted to effectively resist external impact and improve loading capacity.



Size	Ply Rating	Tread Depth (mm)	Load Index	Speed Symbol	KG(LBS.)Load Capacity		Pressure kPa(PSI)	Standard Rim
					Single	Dual		
10.00R20	18PR	16.0	149/146	K	3250(7160)	3000(6610)	930(135)	7.50



AR133

PRODUCT INTRODUCTION

- 1.The unique tread compound formula improves wear performance and reduces heat generation,making driving more safer.
- 2.Suitable for mid-long haul truck on all kinds of good road.



Size	Ply Rating	Tread Depth (mm)	Load Index	Speed Symbol	KG(LBS.)Load Capacity		Pressure kPa(PSI)	Standard Rim
					Single	Dual		
11.00R20	16PR	15.0	150/147	K	3350(7385)	3075(6780)	830(120)	8.0
11.00R20	18PR	15.0	152/149	K	3550(7830)	3250(7160)	930(135)	8.0

ON/OFF ROAD

PRODUCT INFORMATION

PRODUCT INTRODUCTION

1. Excellent braking effect is suitable for driving on both ordinary roads and mixed roads.
2. The stone discharge structure design at the bottom of the pattern groove improves the performance of puncture resistance.
3. The special block-shaped deep flower and the reinforced bead design reduce irregular wear and have super high wear resistance.



HL618



Size	Ply Rating	Tread Depth (mm)	Load Index	Speed Symbol	KG(LBS.)Load Capacity		Pressure kPa(PSI)	Standard Rim
					Single	Dual		
11.00R20	18PR	20.0	152/149	J	3750(8270)	3450(7610)	830(120)	8.0
11.00R20	16PR	20.0	150/147	J	3350(7385)	3075(6780)	830(120)	8.0
12.00R20	20PR	20.0	156/153	J	4000(8820)	3650(8050)	900(130)	8.5

PRODUCT INTRODUCTION

1. The large tread pattern design on the tire crown surface increases the tire grip performance.
2. Deepen the pattern design, prolong the service life of the tire and reduce the use cost.
3. The medium and short distance special tire in vacuum tire is suitable for mixed road.



AR898



Size	Ply Rating	Tread Depth (mm)	Load Index	Speed Symbol	KG(LBS.)Load Capacity		Pressure kPa(PSI)	Standard Rim
					Single	Dual		
12R22.5	16PR	20.0	150/147	D	3350(7385)	3075(6780)	830(120)	9.00
12R22.5	18PR	20.0	152/149	D	3550(7830)	3250(7160)	930(135)	9.00

PRODUCT INTRODUCTION

1. Unique composite tread formula reduces irregular wear and reduces wear rate.
2. The open pattern design of the tire shoulder improves better grip and better heat dissipation.
3. The widened transverse groove provides strong traction and grip, and effectively improves the self-cleaning performance of the tire.



HL658



Size	Ply Rating	Tread Depth (mm)	Load Index	Speed Symbol	KG(LBS.)Load Capacity		Pressure kPa(PSI)	Standard Rim
					Single	Dual		
11.00R20	18PR	20.0	152/149	J	3750(8270)	3450(7610)	830(120)	8.00
11.00R20	16PR	20.0	150/147	J	3350(7385)	3075(6780)	830(120)	8.00
12.00R20	20PR	20.0	156/153	J	4000(8820)	3650(8050)	900(130)	8.50

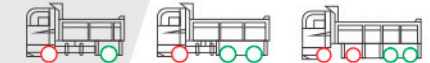
PRODUCT INFORMATION

PRODUCT INTRODUCTION

1. Unique tread compound formula.
2. Super wear resistance, excellent traction and braking performance.
3. Deep narrow lug pattern, ground grip and wet skid resistance, excellent heat dissipation.
4. Single -Steering transverse block design, superior traction performance.



AW901



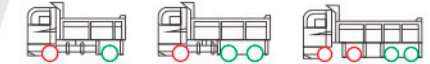
Size	Ply Rating	Tread Depth (mm)	Load Index	Speed Symbol	KG(LBS.)Load Capacity		Pressure kPa(PSI)	Standard Rim
					Single	Dual		
11R22.5	14PR	21.0	144/141	K	2800(6170)	2650(5840)	720(105)	8.25
11R22.5	16PR	21.0	146/143	K	3000(6610)	2725(6005)	830(120)	8.25

PRODUCT INTRODUCTION

1. Aggressive shoulder block pattern, solid middle pattern groove and excellent transverse pattern groove can provide excellent tear resistance and cutting resistance, and outstanding traction performance on tough road.
2. Deepen and widen pattern design leads excellent one-time driving mileage.



AW902



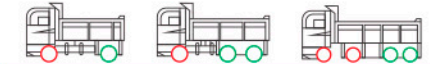
Size	Ply Rating	Tread Depth (mm)	Load Index	Speed Symbol	KG(LBS.)Load Capacity		Pressure kPa(PSI)	Standard Rim
					Single	Dual		
12.00R24	18PR	20.0	158/155	F	4250(9370)	3875(8540)	830(120)	8.5
12.00R24	20PR	20.0	160/157	F	4500(9920)	4125(9090)	900(130)	8.5

PRODUCT INTRODUCTION

1. Unique block pattern provides excellent traction.
2. Deeper groove, anti-stone design can effectively improve traction performance and lifetime.
3. Carcass is made of super strong steel wire material to enhance the lifetime and loading capacity.
4. Special mining tread formula provides excellent anti-puncture, anti-cut, anti-tear performance.



AW903/HD



Size	Ply Rating	Tread Depth (mm)	Load Index	Speed Symbol	KG(LBS.)Load Capacity		Pressure kPa(PSI)	Standard Rim
					Single	Dual		
13R22.5	20PR	20.0	154/151	F	3750(8270)	3450(7610)	830(120)	9.75
11R22.5	16PR	23.0	146/143	F	3000(6610)	2725(6005)	830(120)	8.25
295/80R22.5	18PR	20.5	152/149	F	3350(7830)	3250(7160)	900(130)	9.75

PRODUCT INFORMATION

PRODUCT INFORMATION



PRODUCT INTRODUCTION

- 1.The classical pattern design provides outstanding wear resistance and good heat dissipation.
- 2.Rib-Lug grooves pattern design offers strong traction, superior ground grip and good drainage.
- 3.On driving wheel position, it brings high mileage of low fuel consumption.

AR313/3137



Size	Ply Rating	Tread Depth (mm)	Load Index	Speed Symbol	KG(LBS.)Load Capacity		Pressure kPa(PSI)	Standard Rim
					Single	Dual		
6.50R16LT	12PR	12.0	110/105	G	1060(2335)	925(2040)	670(100)	5.5F
7.00R16LT	14PR	13.5	118/114	G	1320(2910)	1180(2600)	770(110)	5.5F
7.50R16LT	14PR	14.0	122/118	G	1500(3305)	1320(2910)	770(110)	6.00G
8.25R16LT	16PR	14.5	128/124	G	1800(3970)	1600(3525)	770(110)	6.50H
10.00R20	18PR	19.5	149/146	J	3250(7160)	3000(6610)	930(135)	7.5
11.00R20	16PR	19.0	150/147	J	3350(7385)	3075(6780)	830(120)	8.0
11.00R20	18PR	19.0	152/149	J	3550(7830)	3250(7160)	930(135)	8.0
12.00R20	20PR	19.0	156/153	J	4000(8820)	3650(8050)	900(130)	8.5



PRODUCT INTRODUCTION

- 1.Distinctive structure and tread compound formula benefit for superior loading capacity on all kinds of tough road.
- 2.The large blocks pattern design ensures excellent traction, off-road mobility and self-cleaning ability.
- 3.Rainforced structure provides better loading capacity.

AR3581



Size	Ply Rating	Tread Depth (mm)	Load Index	Speed Symbol	KG(LBS.)Load Capacity		Pressure kPa(PSI)	Standard Rim
					Single	Dual		
11.00R20	16PR	18.5	150/147	J	3350(7385)	3075(6780)	830(120)	8.0
11.00R20	18PR	18.5	152/149	J	3550(7830)	3250(7160)	930(135)	8.0
12.00R20	18PR	18.5	154/151	J	3750(8270)	3450(7610)	830(120)	8.5
12.00R20	20PR	18.5	156/153	J	4000(8820)	3650(8050)	900(130)	8.5
12R22.5	16PR	18.0	150/147	F	3350(7385)	3075(6780)	830(120)	9.0
12R22.5	18PR	18.0	152/149	F	3550(7830)	3250(7160)	930(135)	9.0



PRODUCT INTRODUCTION

- 1.Suitable for loading truck on ordinary and mixed road.
- 2.Deep design which can provides strong traction and great wear resistance.

AR318



Size	Ply Rating	Tread Depth (mm)	Load Index	Speed Symbol	KG(LBS.)Load Capacity		Pressure kPa(PSI)	Standard Rim
					Single	Dual		
8.25R20	14PR	20.0	136/134	K	2240(4940)	2120(4675)	830(120)	6.5
8.25R20	16PR	20.0	139/137	K	2430(5360)	2300(5070)	930(135)	6.5
9.00R20	14PR	20.0	141/139	J	2575(5675)	2430(5355)	790(115)	7.0
9.00R20	16PR	20.0	144/142	J	2800(6175)	2650(5840)	900(130)	7.0
10.00R20	18PR	20.0	149/146	J	3250(7160)	3000(6610)	930(135)	7.5
11.00R20	18PR	18.2	152/149	J	3550(7830)	3250(7160)	930(135)	8.0
12.00R20	18PR	18.2	154/151	J	3750(8270)	3450(7610)	830(120)	8.5
12.00R20	20PR	18.2	156/153	J	4000(8820)	3650(8050)	900(130)	8.5



PRODUCT INTRODUCTION

- 1.Deep grooves pattern design offer super wear resistance, which used for light truck on mixed road.
- 2.The robust blocks design provides strong traction and off-road mobility.
- 3.Special Tread-compound formula brings excellent self-cleaning capability.

AR317



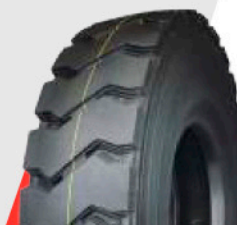
Size	Ply Rating	Tread Depth (mm)	Load Index	Speed Symbol	KG(LBS.)Load Capacity		Pressure kPa(PSI)	Standard Rim
					Single	Dual		
6.50R16LT	12PR	18.5	110/105	J	1060(2335)	925(2040)	670(100)	5.5F
7.00R16LT	14PR	18.5	118/114	J	1320(2910)	1180(2600)	770(110)	5.5F
7.50R16LT	14PR	19.0	122/118	J	1500(3305)	1320(2910)	770(110)	6.00G
8.25R16LT	16PR	19.0	128/124	F	1800(3970)	1600(3525)	770(110)	6.50H



PRODUCT INFORMATION



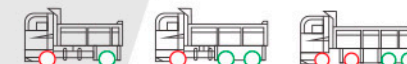
**OFF ROAD
CONSTRUCTION
MINING**



AR667

PRODUCT INTRODUCTION

1. Distinctive structure and tread compound formula benefit for superior loading capacity on all kinds of tough road.
2. The large blocks pattern design ensures excellent traction, off-road mobility and self-cleaning ability.



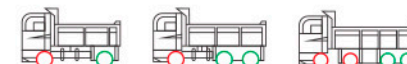
Size	Ply Rating	Tread Depth (mm)	Load Index	Speed Symbol	KG(LBS.)Load Capacity		Pressure kPa(PSI)	Standard Rim
					Single	Dual		
11.00R20	18PR	24.0	152/149	D	3550(7830)	3250(7160)	930(135)	8.0
12.00R20	18PR	24.0	154/151	D	3750(8270)	3450(7610)	830(120)	8.5
12.00R20	20PR	24.0	156/153	D	4000(8820)	3650(8050)	900(130)	8.5



AR513

PRODUCT INTRODUCTION

1. Strengthen the design of bead bead to improve tire load.
2. High strength steel cord for tire crown can effectively improve the explosion-proof performance of tire.
3. Suitable for short distance, National Road, provincial road and other mixed pavement.



Size	Ply Rating	Tread Depth (mm)	Load Index	Speed Symbol	KG(LBS.)Load Capacity		Pressure kPa(PSI)	Standard Rim
					Single	Dual		
9.00R20	14PR	15.2	141/139	F	2575(5675)	2430(5355)	790(115)	7.0
9.00R20	16PR	15.2	144/142	F	2800(6175)	3650(5840)	900(130)	7.0



AR558

PRODUCT INTRODUCTION

1. Deepen pattern groove with anti-stone design, long mileage.
2. Large block pattern structure, special used for construction and mining area.
3. Unique tread compound formula, excellent tear and puncture resistance.
4. High strengthened belt and carcass steel wire, specially for overloading.
5. Suitable for driving wheel on mining and construction.



Size	Ply Rating	Tread Depth (mm)	Load Index	Speed Symbol	KG(LBS.)Load Capacity		Pressure kPa(PSI)	Standard Rim
					Single	Dual		
12.00R20	18PR	24.0	154/151	D	3750(8270)	3450(7610)	830(120)	8.5
12.00R20	20PR	24.0	156/153	D	4000(8820)	3650(8050)	900(130)	8.5

PRODUCT INFORMATION

PRODUCT INTRODUCTION

1. Provide resistance to tearing and puncturing.
2. Suitable for short distance on mining and mixed road.
3. Transverse large block with deep grooves provide excellent ground grip.



AR525/5251



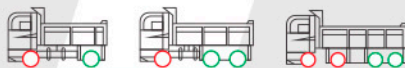
Size	Ply Rating	Tread Depth (mm)	Load Index	Speed Symbol	KG(LBS.)Load Capacity		Pressure kPa(PSI)	Standard Rim
					Single	Dual		
8.25R20	14PR	21.0	136/134	E	2240(4940)	2120(4675)	830(120)	6.5
8.25R20	16PR	21.0	139/137	E	2430(5360)	2300(5070)	930(135)	6.5
9.00R20	14PR	21.0	141/139	E	2575(5675)	2430(5355)	790(115)	7.0
9.00R20	16PR	21.0	144/142	E	2800(6175)	2650(5840)	900(130)	7.0
10.00R20	18PR	21.0	149/146	F	3250(7160)	3000(6610)	930(135)	7.5
11.00R20	16PR	22.0	150/147	F	3350(7385)	3075(6780)	830(120)	8.0
11.00R20	18PR	22.0	152/149	D	3550(7830)	3250(7160)	930(135)	8.0
12.00R20	18PR	22.0	154/151	F	3750(8270)	3450(7610)	830(120)	8.5
12.00R20	20PR	22.0	156/153	D	4000(8820)	3650(8050)	900(130)	8.5
12R22.5	16PR	24.0	150/147	A8	3350(7385)	3075(6780)	830(120)	9.0
12R22.5	18PR	24.0	152/149	A8	3550(7830)	3250(7160)	930(135)	9.0

PRODUCT INTRODUCTION

1. Reinforced bead design offers super loading capability, which suitable for short distance on mining and mixed road.
2. Transverse large blocks pattern design provides excellent ground grip and climbing capability.
3. Provide resistance to tearing and puncturing on tough road, which makes tire life longer.



AR527



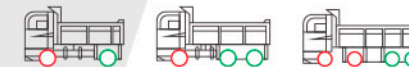
Size	Ply Rating	Tread Depth (mm)	Load Index	Speed Symbol	KG(LBS.)Load Capacity		Pressure kPa(PSI)	Standard Rim
					Single	Dual		
12.00R20	18PR	22.9	154/151	D	3750(8270)	3450(7610)	830(120)	8.5
12.00R20	20PR	22.9	156/153	D	4000(8820)	3650(8050)	900(130)	8.5

PRODUCT INTRODUCTION

1. Distinctive reinforced structure and tread compound formula benefit for extra superior loading capacity on all kinds of tough road.
2. The large blocks pattern design ensures excellent traction, off-road mobility and self-cleaning ability.



AR5157



Size	Ply Rating	Tread Depth (mm)	Load Index	Speed Symbol	KG(LBS.)Load Capacity		Pressure kPa(PSI)	Standard Rim
					Single	Dual		
11.00R20	18PR	28.0	152/149	A8	3550(7830)	3250(7160)	930(135)	8.0
12.00R20	20PR	26.5	156/153	A8	4000(8820)	3650(8050)	900(130)	8.5

PRODUCT INTRODUCTION

1. The carcass is reinforced to improve the bearing capacity of the tire;
2. Optimize the design of toe mouth to improve the anti air, anti explosion and anti crack ability of toe mouth;
3. Special mine tread rubber formula, tire wear resistance, gnawing resistance and pricking resistance;
4. Strong horizontal pattern design, strong power.



AR5158



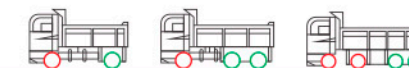
Size	Ply Rating	Tread Depth (mm)	Load Index	Speed Symbol	KG(LBS.)Load Capacity		Pressure kPa(PSI)	Standard Rim
					Single	Dual		
12.00R20	20PR	24.5	156/153	A8	4000(8820)	3650(8050)	900(130)	8.5

PRODUCT INTRODUCTION

1. Provide resistance to tearing and puncturing.
2. Suitable for short distance on mining and mixed road.
3. Transverse large block with deep grooves provide excellent ground grip.



AR5255



Size	Ply Rating	Tread Depth (mm)	Load Index	Speed Symbol	KG(LBS.)Load Capacity		Pressure kPa(PSI)	Standard Rim
					Single	Dual		
12.00R20	18PR	22.0	154/151	D	3750(8270)	3450(7610)	830(120)	8.5

PRODUCT INFORMATION

PRODUCT INFORMATION



AR535

PRODUCT INTRODUCTION

- 1.Reinforced bead design offers super loading capability, which suitable for short distance on mining and mixed road.
- 2.Transverse large blocks pattern design provides excellent ground grip and climbing capability.
- 3.Provide resistance to tearing and puncturing on tough road, which makes tire life longer.



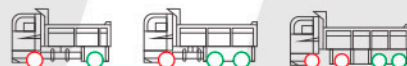
Size	Ply Rating	Tread Depth (mm)	Load Index	Speed Symbol	KG(LBS.)Load Capacity		Pressure kPa(PSI)	Standard Rim
					Single	Dual		
7.00R16LT	14PR	20.0	118/114	F	1320(2910)	1180(2600)	770(110)	5.50F
7.50R16LT	14PR	20.0	122/118	F	1500(3305)	1320(2910)	770(110)	6.00G
8.25R16LT	16PR	21.0	128/124	F	1800(3970)	1600(3525)	770(110)	6.50H
8.25R20	14PR	21.0	136/134	D	2240(4940)	2120(4675)	830(120)	6.5
8.25R20	16PR	21.0	139/137	D	2430(5360)	2300(5070)	930(135)	6.5
9.00R20	14PR	21.0	141/139	D	2575(5675)	2430(5355)	790(115)	7.0
9.00R20	16PR	21.0	144/142	D	2800(6175)	2650(5840)	900(130)	7.0
10.00R20	18PR	21.0	149/146	D	3250(7160)	3000(6610)	930(135)	7.5
11.00R20	16PR	24.0	150/147	F	3350(7385)	3075(6780)	830(120)	8.0
11.00R20	18PR	24.0	152/149	D	3550(7830)	3250(7160)	930(135)	8.0
12.00R20	18PR	24.0	154/151	D	3750(8270)	3450(7610)	830(120)	8.5
12.00R20	20PR	24.0	156/153	D	4000(8820)	3650(8050)	900(130)	8.5
12R22.5	16PR	24.0	150/147	A8	3350(7385)	3075(6780)	830(120)	9.0
12R22.5	18PR	24.0	152/149	A8	3550(7830)	3250(7160)	930(135)	9.0



AR565

PRODUCT INTRODUCTION

- 1.Distinctive reinforced structure and tread compound formula benefit for extra superior loading capacity on all kinds of tough road.
- 2.The large blocks pattern design ensures excellent traction, off-road mobility and self-cleaning ability.



Size	Ply Rating	Tread Depth (mm)	Load Index	Speed Symbol	KG(LBS.)Load Capacity		Pressure kPa(PSI)	Standard Rim
					Single	Dual		
7.00R16LT	14PR	14.5	118/114	D	1320(2910)	1180(2600)	770(110)	5.50F
7.50R16LT	14PR	16.5	122/118	D	1500(3305)	1320(2910)	770(110)	6.00G
8.25R16LT	16PR	17.5	128/124	D	1800(3970)	1600(3525)	770(110)	6.50H



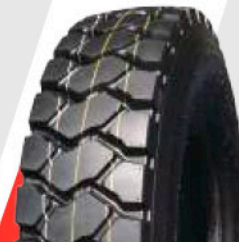
AR581

PRODUCT INTRODUCTION

- 1.The optimized tread compound formula not only improves the puncture resistance of the tire, but also improves the heat dissipation performance of the tire and effectively increases the service life of the tire;
- 2.Large block pattern design for strong traction.



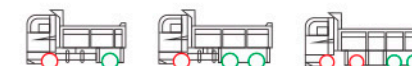
Size	Ply Rating	Tread Depth (mm)	Load Index	Speed Symbol	KG(LBS.)Load Capacity		Pressure kPa(PSI)	Standard Rim
					Single	Dual		
11.00R20	16PR	23.5	150/147	J	3350(7385)	3075(6780)	830(120)	8.0
11.00R20	18PR	23.5	152/149	J	3750(8270)	3450(7610)	830(120)	8.0
12.00R20	20PR	24.8	156/153	E	4000(8820)	3650(8050)	900(130)	8.5



AR585

PRODUCT INTRODUCTION

- 1.Reinforced bead design offers super loading capability, which suitable for short distance on mining and mixed road.
- 2.Transverse large blocks pattern design provides excellent ground grip and climbing capability.
- 3.Provide resistance to tearing and puncturing on tough road, which makes tire life longer.



Size	Ply Rating	Tread Depth (mm)	Load Index	Speed Symbol	KG(LBS.)Load Capacity		Pressure kPa(PSI)	Standard Rim
					Single	Dual		
10.00R20	18PR	23.0	149/146	F	3250(7160)	3000(6610)	930(135)	7.5
11.00R20	16PR	24.5	150/147	D	3350(7385)	3075(6780)	830(120)	8.0



AR586

PRODUCT INTRODUCTION

- 1.Distinctive reinforced structure and tread compound formula benefit for extra superior loading capacity on all kinds of tough road.
- 2.The large blocks pattern design ensures excellent traction, off-road mobility and self-cleaning ability.



Size	Ply Rating	Tread Depth (mm)	Load Index	Speed Symbol	KG(LBS.)Load Capacity		Pressure kPa(PSI)	Standard Rim
					Single	Dual		
11.00R20	18PR	24.0	152/149	D	3550(7830)	3250(7160)	930(135)	8.0
12.00R20	18PR	24.0	154/151	F	3750(8270)	3450(7610)	830(120)	8.5

PRODUCT INFORMATION

PRODUCT INTRODUCTION

1. Large block and deep groove give the tire better grip;
2. The step design in the groove makes the tire have better stone removal and self-cleaning;
3. The optimized formula ensures that the tire is puncture resistant and does not collapse, so that the tire has a longer service life.



AR587



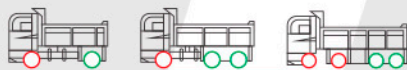
Size	Ply Rating	Tread Depth (mm)	Load Index	Speed Symbol	KG(LBS.)Load Capacity		Pressure kPa(PSI)	Standard Rim
					Single	Dual		
11.00R20	18PR	24.0	152/149	D	3550(7830)	3250(7160)	930(135)	8.0
12.00R20	18PR	24.0	154/151	F	3750(8270)	3450(7160)	830(120)	8.5

PRODUCT INTRODUCTION

1. Thickened crown design can effectively prevent the tire crown surface from being punctured.
2. Unique step-type anti-stone pattern design, to avoid stone stuck into tread groove, and avoid tire crown be damaged.
3. Suitable for mining area, mountainous area and bad road surface.



AR595



Size	Ply Rating	Tread Depth (mm)	Load Index	Speed Symbol	KG(LBS.)Load Capacity		Pressure kPa(PSI)	Standard Rim
					Single	Dual		
11.00R20	16PR	23.0	150/147	A8	3350(7385)	3075(6780)	830(120)	8.0
11.00R20	18PR	23.0	152/149	A8	3550(7830)	3250(7160)	930(135)	8.0

PRODUCT INTRODUCTION

1. Large pattern blocks can effectively improve the puncture and cutting resistance of tires, which is more suitable for bad industrial and mining roads;
2. Double step and boss design can effectively prevent sharp objects from damaging the base rubber of the pattern groove bottom;
3. Timely pop the stones out of the pattern groove to improve self-cleaning.



AR596



Size	Ply Rating	Tread Depth (mm)	Load Index	Speed Symbol	KG(LBS.)Load Capacity		Pressure kPa(PSI)	Standard Rim
					Single	Dual		
12.00R20	18PR	26.0	156/153	A8	4000(8820)	3650(8050)	900(130)	8.5

PRODUCT INFORMATION

PRODUCT INTRODUCTION

1. The carcass uses super strong steel wire and the crown explosion-proof layer is designed to improve the impact resistance of the tire;
2. Special formula for mine, tire anti cutting, no block falling, more suitable for bad industrial and mining roads.



AR597



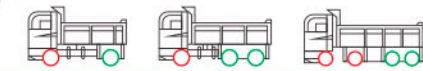
Size	Ply Rating	Tread Depth (mm)	Load Index	Speed Symbol	KG(LBS.)Load Capacity		Pressure kPa(PSI)	Standard Rim
					Single	Dual		
11.00R20	16PR	23.5	150/147	A8	3350(7385)	3075(6780)	830(120)	8.0
11.00R20	18PR	23.5	152/149	A8	3750(8270)	3450(7610)	830(120)	8.0

PRODUCT INTRODUCTION

1. Distinctive structure and tread compound formula benefit for superior loading capacity on all kinds of tough road.
2. The large blocks pattern design ensures excellent traction, off-road mobility and self-cleaning ability.



AR665



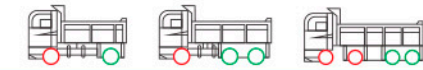
Size	Ply Rating	Tread Depth (mm)	Load Index	Speed Symbol	KG(LBS.)Load Capacity		Pressure kPa(PSI)	Standard Rim
					Single	Dual		
11.00R20	18PR	24.0	152/149	D	3550(7830)	3250(7160)	930(135)	8.0
12.00R20	18PR	24.0	154/151	D	3750(8270)	3450(7610)	830(120)	8.5
12.00R20	20PR	24.0	156/153	D	4000(8820)	3650(8050)	900(130)	8.5

PRODUCT INTRODUCTION

1. Distinctive reinforced structure and tread compound formula benefit for extra superior loading capacity on all kinds of tough road.
2. The large blocks pattern design ensures excellent traction, off-road mobility and self-cleaning ability.



AR666



Size	Ply Rating	Tread Depth (mm)	Load Index	Speed Symbol	KG(LBS.)Load Capacity		Pressure kPa(PSI)	Standard Rim
					Single	Dual		
11.00R20	18PR	24.0	152/149	D	3550(7830)	3250(7160)	930(135)	8.0
12.00R20	18PR	24.0	154/151	D	3750(8270)	3450(7610)	830(120)	8.5
12.00R20	20PR	24.0	156/153	D	4000(8820)	3650(8050)	900(130)	8.5

COMPANY HISTORY

COMPANY HISTORY



2000



2012



2013



2014



2016



COMPANY HISTORY

COMPANY HISTORY



2017



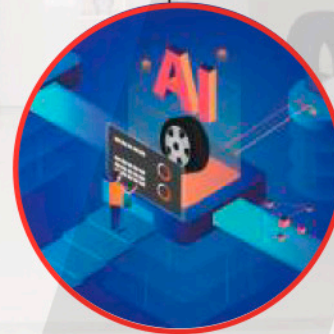
2019



In the future



2018



2020

COMMON CAUSES OF TIRE DAMAGE

COMMON CAUSES OF TIRE DAMAGE



COMMON CAUSES OF TIRE DAMAGE



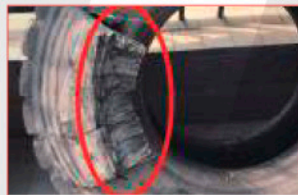
Waterproof Line Crack

Use of poor rim or the pressure is relatively insufficient, leading to the stress to move down and waterproof line crack.



Flange Cut

Rim deformation or put the tyres in improper place when mounting, tire bead is cut by flange.



Bead Blasting

Badly overloading or sharp turn, single tyre gets huge stress so lead to bead blasting.



Tread Puncture

The tread is punctured by sharp objects when driving on bad road.



Tread Puncture

The tread is punctured by sharp objects when driving on bad road.



Pattern Root Torn Badly

The base rubber of the pattern is thinner than other parts. When driving on gravel road with high air pressure or sharp turn, pattern root will be torn badly.



Bead Twisted And Deformed To Crack

When using the tyre under low pressure and heavy load for a long time, the flexing point moves down and the bead is twisted and deformed to crack.



Pattern Block Cracking Or Dropping Off

When driving on bad road, the shoulder is pushed and scratched by the objects such as the roadbed or try to pass in force, which will cause pattern block cracking or dropping off.



Strip-Shaped Bump

The tire crown is punctured by sharp objects such as stones, bolts and nails, etc during driving, forming a strip-shaped bump



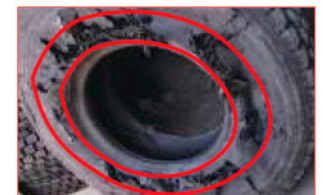
Tire Crown Impact Blast

Tire crown impact blast is caused by the impact of foreign object on the tread when driving under high pressure, high speed and heavy load.



Eccentric Wear Of Tread

The wear, deformation and displacement of the mechanical parts make the camber of the vehicle being changed, or the repairing and/or calibration of vehicle is not correct, which makes the tread not be vertical to the road surface so causes the eccentric abrasion. This kind of wear is fast.



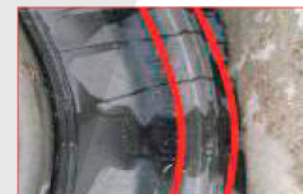
The Carcass Was Crushed By Running Without Air

In the process of driving, the tyre is punctured by foreign objects or the valve core leaks, resulting in tyre pressure loss. When the brake is not timely, the tyre sidewall is crushed by the rim.



Foreign Material Between Side Wall

When vehicle is traveling with twin tyre, there are some foreign materials between the two tyres, where the steel cords of the side wall may deform and cause such damage.



Shoulder Separation

Using the tyre under low pressure for a long time cause shoulder separation.



Tire Burst

Severe overload during driving, high air pressure or sharp turn, resulting in excessive instantaneous force on the sidewall and blasting.