

2024R02-10

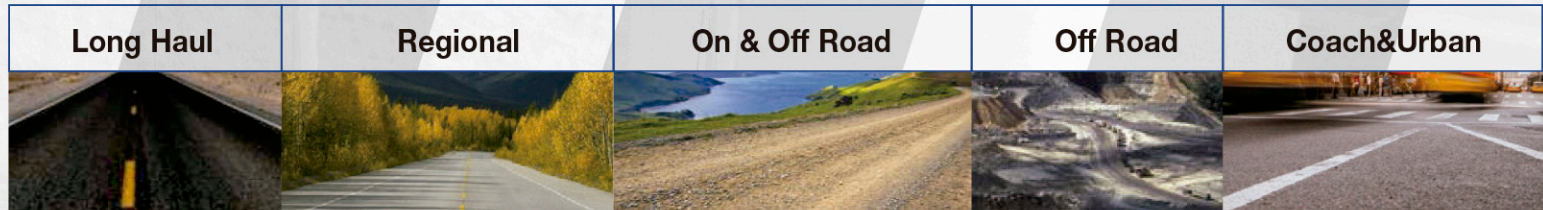
AMULET



**Tire Direct**  
*La nueva generación*



**TRUCK AND BUS TIRES**  
COMMERCIAL TIRE CATALOG 



**Steer**



07 AT501

10 AT505

11 AF508

**Drive**



08 AD165

09 AD507

12 AD506

13 AD515

15 AD218

**All-Position**



14 AA612

16 AA615

17 AA610

18 AD189

19 AC121

20 AU555

Amulet tires provide:

- Advanced Engineering & Technology
- Enhanced footprint provides stability & excellent weight displacement
- Premium 4 steel belt construction in 22.5 & 24.5

**Tire Direct**  
La nueva generación

**AMULET**

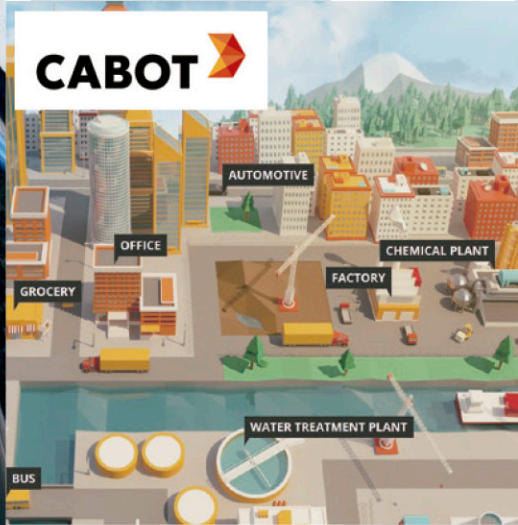
**CABOT**

**BEKAERT**  
Better together

**ExxonMobil**

**HYOSUNG**

**CABOT**



Cabot Corporation (NYSE: CBT) is a leading global specialty chemicals and performance materials company headquartered in Boston, Massachusetts, USA.

The power of Cabot is that we combine this knowledge with our technical expertise and, ultimately partner with our customers to create value through innovation and technology. Our strength in research and development is a major reason why we have been an industry leader for more than 130 years in products such as rubber and specialty carbons, activated carbon, aerogel, fumed metal oxides, graphenes, inkjet colorants, masterbatches and conductive compounds. We continue to innovate through @cabotlabs, which integrates our expert team of engineers, scientists and researchers with market intelligence and technology leadership to deliver solutions for tomorrow.

Innovation is a key driver of Bekaert's technological leadership. Ever since the establishment of the company back in 1880, innovation has been a top priority within Bekaert. The invention of reverse twist barbed wire, patented in 1881, may not impress you as an example of high-tech innovation today, it certainly was 135 years ago! By the way, we still manufacture this product today.

Transforming steel wire and applying advanced coating know-how. That is what we are good at.

Improving both the bulk and surface properties of steel wire products since almost 140 years. That is what we do better, every day.

Offering innovative solutions that add value to our customers and help them grow their business. That is what makes us better together.



**BEKAERT**  
better together

## AT501

### Application

Medium and long mileage trucks running on paved and highway roads



- ☑ Ultra Wear Resistance
- ☑ Outstanding High Speed Performance
- ☑ Excellent Durability



● Suitable



## AD165

### Application

Medium and long mileage vehicles running on paved roads



- ☑ Low Heat Generation
- ☑ High Wear Resistance
- ☑ Excellent Grip
- ☑ Economy and Environment Friendly



● Suitable



Size	PR	LI/ SS	Standard Rim	Max. Load				Pressure				Tread Depth (mm)	Overall Diameter (mm)	Section Width (mm)
				(kgs)		(lbs)		(kPa)		(PSI)				
				S	D	S	D	S	D	S	D			
215/75R17.5	16	135/133 L	6.00	2180	2060	4805	4540	860	860	125	125	12.5	767	211
235/75R17.5	18	143/141 L	6.75	2725	2575	6005	5675	860	860	125	125	12.5	797	233
225/70R19.5	14	128/126 L	6.75	1800	1700	3970	3750	760	760	110	110	12.5	811	226
245/70R19.5	18	144/142 J	7.50	2800	2650	6175	5840	900	900	130	130	13.0	839	248
255/70R22.5	16	140/137 M	7.50	2500	2300	5510	5070	830	830	120	120	13.5	930	255

S=Single D=Dual; 1inch=25.4mm 1kPa=0.142psi 1KG=2.2lbs

Size	PR	LI/ SS	Standard Rim	Max. Load				Pressure				Tread Depth (mm)	Overall Diameter (mm)	Section Width (mm)
				(kgs)		(lbs)		(kPa)		(PSI)				
				S	D	S	D	S	D	S	D			
315/80R22.5	20	156/153 K	9.00	4000	3650	8820	8050	850	850	125	125	18.0	1076	312

S=Single D=Dual; 1inch=25.4mm 1kPa=0.142psi 1KG=2.2lbs

## AD507

**Application**  
Long Haul Drive



- ☑ Excellent grip
- ☑ Excellent durability
- ☑ Excellent traction
- ☑ Excellent cost performance



● Suitable



High rigidity pattern design.  
Low rolling resistance with lower deformation in rotation by special pattern design.  
Excellent compound design promotes cool-running and excellent traction.

Stronger tie-bar design provides even wear and longer tread life.

Extra long mileage with more contact surface.

## AT505

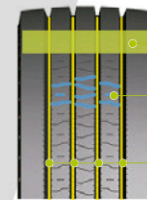
**Application**  
Steer and All-Position



- ☑ Long tread life and great high speed stability
- ☑ Durable and wear-resistant sidewall
- ☑ Resists heat build-up
- ☑ Low noise emissions and reduced stone retention



● Suitable



High wear resistance  
Long tread life

Economical and Green

Excellent cost-performance

Size	PR	LI/ SS	Standard Rim	Max. Load				Pressure				Tread Depth (mm)	Overall Diameter (mm)	Section Width (mm)
				(kgs)		(lbs)		(kPa)		(PSI)				
				S	D	S	D	S	D	S	D			
11R22.5	14	144/142 L	8.25	2800	2650	6175	5840	720	720	105	105	23.5	1059	279
11R22.5	16	146/143 L	8.25	3000	2725	6610	6005	830	830	120	120	23.5	1059	279
11R24.5	14	146/143 L	8.25	3000	2725	6610	6005	720	720	105	105	23.5	1110	279
11R24.5	16	149/146 L	8.25	3250	3000	7160	6610	830	830	120	120	23.5	1110	279
295/75R22.5	14	144/141 L	9.00	2800	2575	6175	5675	760	760	110	110	23.5	1020	298
295/75R22.5	16	146/143 L	9.00	3000	2725	6610	6005	830	830	120	120	23.5	1020	298
285/75R24.5	14	144/141 L	8.25	2800	2575	6175	5675	760	760	110	110	23.5	1056	283
285/75R24.5	16	147/144 L	8.25	3075	2800	6780	6175	830	830	120	120	23.5	1056	283

S=Single D=Dual; 1inch=25.4mm 1kPa=0.142psi 1KG≈2.2lbs

Size	PR	LI/ SS	Standard Rim	Max. Load				Pressure				Tread Depth (mm)	Overall Diameter (mm)	Section Width (mm)
				(kgs)		(lbs)		(kPa)		(PSI)				
				S	D	S	D	S	D	S	D			
225/70R19.5	14	128/126 L	6.75	1800	1700	3970	3750	760	760	110	110	12.5	811	226
255/70R22.5	16	140/137 M	7.50	2500	2300	5510	5070	830	830	120	120	12.5	930	255
315/80R22.5	20	156/153 L	9.00	4000	3650	8820	8050	850	850	125	125	17.0	1076	312
11R22.5	14	144/142 L	8.25	2800	2650	6175	5840	720	720	105	105	16.5	1054	279
11R22.5	16	146/143 L	8.25	3000	2725	6610	6005	830	830	120	120	16.5	1054	279
11R24.5	14	146/143 L	8.25	3000	2725	6610	6005	720	720	105	105	16.5	1104	279
11R24.5	16	149/146 L	8.25	3250	3000	7160	6610	830	830	120	120	16.5	1104	279

S=Single D=Dual; 1inch=25.4mm 1kPa=0.142psi 1KG≈2.2lbs

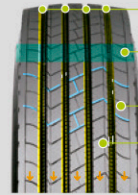
## AF508

### Application

Regional Steer



- ☑ Reduced Noise
- ☑ High Durability
- ☑ High Strength



- Stability**  
The tread groove design provides excellent stability and greater mileage.
- High Scrub Resistance**  
Special tread rubber formula offers better scrub resistance.
- Excellent Handling**  
Unique groove design provides excellent handling.
- Economical and Green**  
Low rolling resistance reduces fuel consumption making the tire both economical and green.

## AD506

### Application

Medium and long mileage trucks running on paved and highway roads



- ☑ Low Heat Generation & Wear Resistance
- ☑ Excellent Grip
- ☑ Economy and Environment Friendly



- Low-temperature mixing technology is used to improve wear resistance and reduce heat generation.
- Separated block pattern design brings outstanding grip.

Size	PR	LI/SS	Standard Rim	Max. Load				Pressure				Tread Depth (mm)	Overall Diameter (mm)	Section Width (mm)
				(kgs)		(lbs)		(kPa)		(PSI)				
				S	D	S	D	S	D	S	D			
11R22.5	14	144/142 L	8.25	2800	2650	6175	5840	720	720	105	105	15.0	1054	279
11R22.5	16	146/143 L	8.25	3000	2725	6610	6005	830	830	120	120	15.0	1054	279
11R24.5	14	146/143 L	8.25	3000	2725	6610	6005	720	720	105	105	16.5	1104	279
11R24.5	16	149/146 L	8.25	3250	3000	7160	6610	830	830	120	120	16.5	1104	279
255/70R22.5	16	140/137M	7.50	2500	2300	5510	5070	830	830	120	120	13.5	930	255
295/75R22.5	14	144/141 L	9.00	2800	2575	6175	5675	760	760	110	110	16.5	1014	298
295/75R22.5	16	146/143 L	9.00	3000	2725	6610	6005	830	830	120	120	16.5	1014	298
285/75R24.5	14	144/141 L	8.25	2800	2575	6175	5675	760	760	110	110	16.5	1050	283
285/75R24.5	16	147/144 L	8.25	3075	2800	6780	6175	830	830	120	120	16.5	1050	283

S=Single D=Dual; 1inch=25.4mm 1kPa=0.142psi 1KG≈2.2lbs

Size	PR	LI/SS	Standard Rim	Max. Load				Pressure				Tread Depth (mm)	Overall Diameter (mm)	Section Width (mm)
				(kgs)		(lbs)		(kPa)		(PSI)				
				S	D	S	D	S	D	S	D			
215/75R17.5	16	135/133 L	6.00	2180	2060	4805	4540	860	860	125	125	15.0	767	211
235/75R17.5	18	143/141 L	6.75	2725	2575	6005	5675	860	860	125	125	15.0	797	233
225/70R19.5	14	128/126 L	6.75	1800	1700	3970	3750	760	760	110	110	15.0	811	226
245/70R19.5	18	144/142 J	7.50	2800	2650	6175	5840	900	900	130	130	15.5	839	248

S=Single D=Dual; 1inch=25.4mm 1kPa=0.142psi 1KG≈2.2lbs

## AD515

### Application Regional Drive



- ✓ Excellent traction
- ✓ Better grip
- ✓ Tread chunking resistance



● Suitable



- High-traction design  
Stone rejection design
- Superior irregular wear resistance  
Long-wearing cap compound is engineered for superior mileage
- Save cost per mile by providing an extra-deep tread

Size	PR	LI/ SS	Standard Rim	Max. Load				Pressure				Tread Depth (mm)	Overall Diameter (mm)	Section Width (mm)
				(kgs)		(lbs)		(kPa)		(PSI)				
				S	D	S	D	S	D	S	D			
11R22.5	14	144/142 L	8.25	2800	2650	6175	5840	720	720	105	105	21.5	1059	279
11R22.5	16	146/143 L	8.25	3000	2725	6610	6005	830	830	120	120	21.5	1059	279
11R24.5	14	146/143 L	8.25	3000	2725	6610	6005	720	720	105	105	21.5	1110	279
11R24.5	16	149/146 L	8.25	3250	3000	7160	6610	830	830	120	120	21.5	1110	279
295/75R22.5	14	144/141 L	9.00	2800	2575	6175	5675	760	760	110	110	21.5	1014	298
295/75R22.5	16	146/143 L	9.00	3000	2575	6610	6005	830	830	120	120	21.5	1014	298

S=Single D=Dual; 1inch=25.4mm 1kPa=0.142psi 1KG~2.2lbs

## AA612

### Application All-Position



- ✓ Excellent durability
- ✓ Cool running



● Suitable



- Cut and chip resistance compound
- Stone rejection design
- Using high strength steel and enhanced bead design to improve impact & tear resistance

Size	PR	LI/ SS	Standard Rim	Max. Load		Pressure		Tread Depth (mm)	Overall Diameter (mm)	Section Width (mm)
				(kgs)	(lbs)	(kPa)	(PSI)			
				385/65R22.5	24	164 K	11.75			
425/65R22.5	20	165 K	12.25	5150	11400	830	120	17.5	1124	422

S=Single D=Dual; 1inch=25.4mm 1kPa=0.142psi 1KG~2.2lbs

## AD218

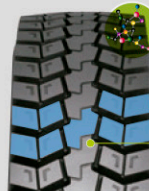
**Application**  
Mixed Service Drive



- ☑ Long tread life
- ☑ Maximum traction
- ☑ Cut & Chip resistant compound
- ☑ Better durability



● Suitable



Wear resistant compound offers longer overall tire life

Enhanced bead structure design improves load carrying capacity

New tread pattern design offers excellent grip capacity

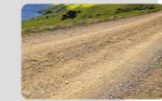


Size	PR	LI/ SS	Standard Rim	Max. Load				Pressure				Tread Depth (mm)	Overall Diameter (mm)	Section Width (mm)
				(kgs)		(lbs)		(kPa)		(PSI)				
				S	D	S	D	S	D	S	D			
11R22.5	16	148/145 L	8.25	3150	2900	6940	6395	850	850	123	123	22.5	1059	279
11R24.5	16	149/146 L	8.25	3250	3000	7160	6610	830	830	120	120	22.5	1110	279

S=Single D=Dual; 1inch=25.4mm 1kPa=0.142psi 1KG≈2.2lbs

## AA615

**Application**  
All-Position



- ☑ Ultra Wear Resistance
- ☑ High Stability on Handling
- ☑ High Load Capacity



● Suitable



Size	PR	LI/ SS	Standard Rim	Max. Load				Pressure				Tread Depth (mm)	Overall Diameter (mm)	Section Width (mm)
				(kgs)		(lbs)		(kPa)		(PSI)				
				S	D	S	D	S	D	S	D			
11R22.5	16	146/143 K	8.25	3000	2725	6610	6005	830	830	120	120	17.5	1054	279
11R24.5	16	149/146 L	8.25	3250	3000	7160	6610	830	830	120	120	17.5	1104	279

S=Single D=Dual; 1inch=25.4mm 1kPa=0.142psi 1KG≈2.2lbs





## AA610

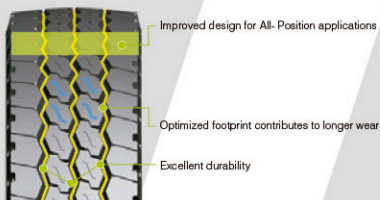
**Application**  
Mixed Service-All Position



- ☑ Excellent durability
- ☑ High strength
- ☑ Cut and Chip resistant compound



● Suitable



Size	PR	LI/ SS	Standard Rim	Max. Load				Pressure				Tread Depth (mm)	Overall Diameter (mm)	Section Width (mm)
				(kgs)		(lbs)		(kPa)		(PSI)				
				S	D	S	D	S	D	S	D			
11R22.5	14	144/142 K	8.25	2800	2650	6175	5840	720	720	105	105	17.5	1054	279
11R22.5	16	146/143 K	8.25	3000	2725	6610	6005	830	830	120	120	17.5	1054	279
11R24.5	14	146/143 K	8.25	3000	2725	6610	6005	720	720	105	105	17.5	1104	279
11R24.5	16	149/146 K	8.25	3250	3000	7160	6610	830	830	120	120	17.5	1104	279

S=Single D=Dual; 1inch=25.4mm 1kPa=0.142psi 1KG≈2.2lbs



## AD189

**Application**

Short mileage vehicles running on unpaved roads



- ☑ Cut Resistance
- ☑ Excellent Grip
- ☑ Avoid Damage on Tread



● suitable

Size	PR	LI/ SS	Standard Rim	Max. Load				Pressure				Tread Depth (mm)	Overall Diameter (mm)	Section Width (mm)
				(kgs)		(lbs)		(kPa)		(PSI)				
				S	D	S	D	S	D	S	D			
11R22.5	18	149/146 G	9.00	3250	3000	7160	6610	930	930	123	123	23.5	1054	279
11R24.5	16	149/146 G	8.25	3250	3000	7160	6610	830	830	120	120	23.5	1110	279

S=Single D=Dual; 1inch=25.4mm 1kPa=0.142psi 1KG≈2.2lbs



## AC121



- ☑ Ultra Wear Resistance
- ☑ Superior Ride Comfort
- ☑ Outstanding Handling and Brake Performance on Wet



● Suitable

Size	PR	LI/ SS	Standard Rim	Max. Load				Pressure				Tread Depth (mm)	Overall Diameter (mm)	Section Width (mm)
				(kgs)		(lbs)		(kPa)		(PSI)				
				S	D	S	D	S	D	S	D			
295/80R22.5	18	152/149 M	9.00	3550	3250	7830	7160	930	930	135	135	15.0	1044	298

S=Single D=Dual; 1inch=25.4mm 1kPa=0.142psi 1KG~2.2lbs



## AU555

### Application

Short mileage vehicles running on paved roads



- ☑ Ultra Wear Resistance
- ☑ Damage Resistance On Sidewall
- ☑ Outstanding High Speed Performance



● Suitable

Size	PR	LI/ SS	Standard Rim	Max. Load				Pressure				Tread Depth (mm)	Overall Diameter (mm)	Section Width (mm)
				(kgs)		(lbs)		(kPa)		(PSI)				
				S	D	S	D	S	D	S	D			
11R22.5	16	148/145 J	8.25	3150	2900	6940	6395	850	850	123	123	20.0	1054	279

S=Single D=Dual; 1inch=25.4mm 1kPa=0.142psi 1KG~2.2lbs